

THE CORPORATION OF THE DISTRICT OF BURNABY

BY-LAW NO. 6918

A BY-LAW to amend By-Law No. 4742, being
"Burnaby Zoning By-Law 1965"

WHEREAS application for rezoning has been made to the Council.

AND WHEREAS the Council has held a public hearing thereon after duly giving notice of the time and place of such hearing.

NOW THEREFORE the Council of The Corporation of the District of Burnaby ENACTS as follows:

1. This By-Law may be cited as "BURNABY ZONING BY-LAW 1965, AMENDMENT BY-LAW NO. 43, 1976".

2. The Map (hereinafter called "Map "A'") attached to and forming an integral part of By-Law No. 4742, being "Burnaby Zoning By-Law 1965", and designated as the Official Zoning Map of The Corporation of the District of Burnaby, is hereby amended according to the Map (hereinafter called "Map "B'"), marginally numbered R.Z. 702 annexed to this By-Law, and in accordance with the explanatory legend, notations, references and boundaries designated, described, delimited and specified in particularity shown upon said Map "B"; and the various boundaries and districts shown upon said Map "B" respectively are an amendment of and in substitution for the respective districts, designated and marked on said Map "A" insofar as the same are changed, modified or varied thereby, and the said Map "A" shall be deemed to be and is hereby declared to be amended accordingly and the said Map "B" is hereby declared to be and shall form an integral part of said Map "A", as if originally incorporated therein, and shall be interpreted accordingly.

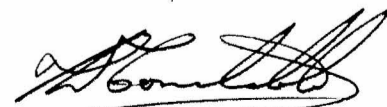
Read a first time this 25th day of October, 1976

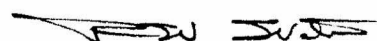
Read a second time this 25th day of October, 1976

Read a third time this 25th day of October, 1976

Reconsidered and adopted by an affirmative vote of at least two-thirds of all the members of the Council present at the meeting at which the vote is taken and entitled to vote on the by-law this 1st day of November, 1976.




MAYOR



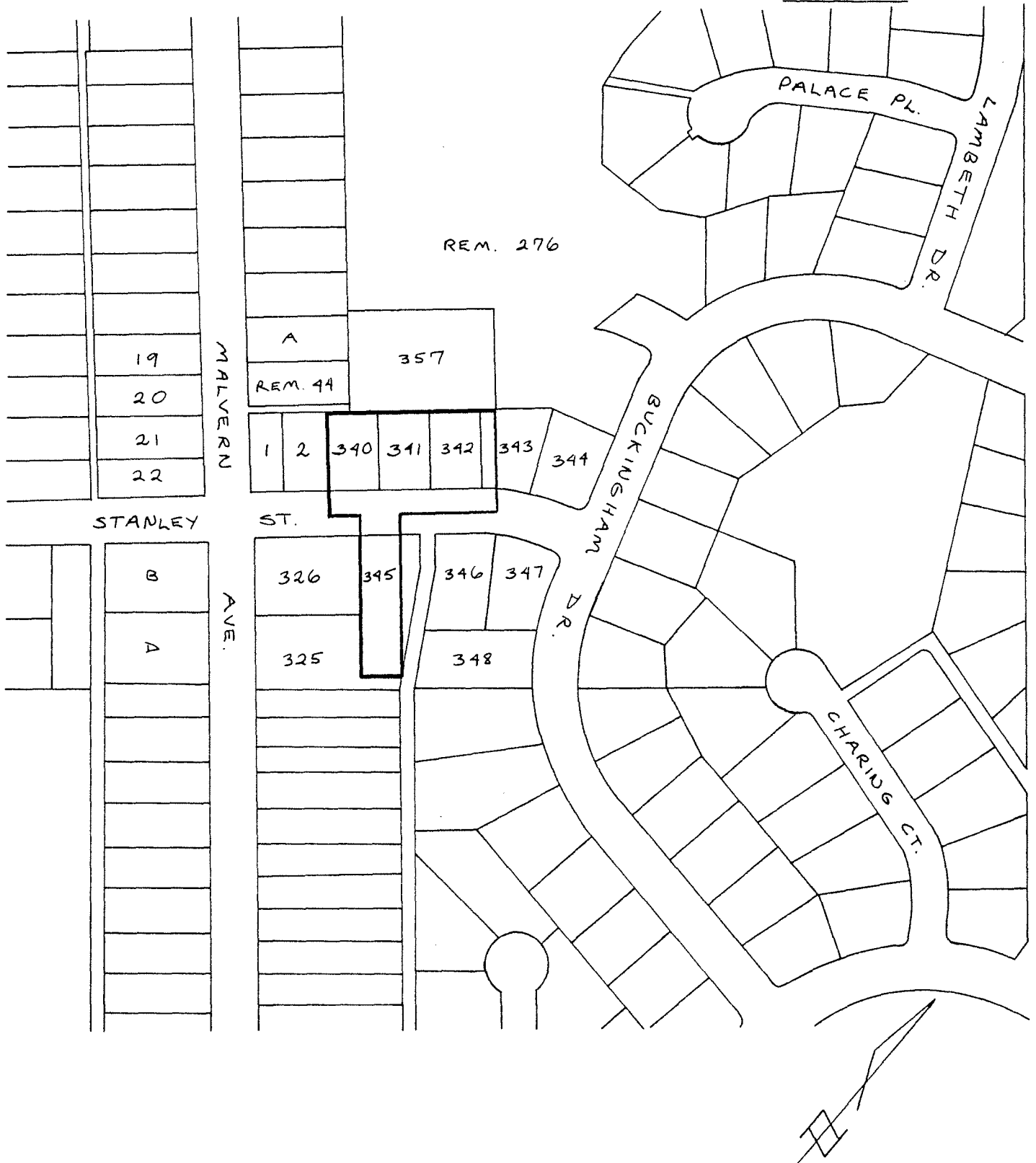
DEPUTY CLERK

BYLAW NUMBER 6918 BEING A BYLAW TO AMEND BYLAW NUMBER 4742 BEING THE BURNABY ZONING BYLAW 1965

PROPERTY REZONED TO: RESIDENTIAL DISTRICT (R1)

LEGAL: Lots 340, 341, 342 and portions of Lots 343 & 345,
D.L. 86, Plan 49263

MAP "B"



THE AREA(S) SHOWN ABOVE
OUTLINED IN BLACK (—)
IS (ARE) REZONED:

FROM: Residential District (R5)
TO: Residential District (R1)

PLANNING DEPARTMENT	
SCALE	1" = 200'
DRAWN	CW
DATE	SEPT. '76

THE CORPORATION OF THE DISTRICT OF BURNABY

OFFICIAL ZONING MAP

No. RZ 702