

THE CORPORATION OF THE DISTRICT OF BURNABY

BY-LAW NO. 6841

A BY-LAW to amend By-Law No. 4742, being  
"Burnaby Zoning By-Law 1965".

WHEREAS application for rezoning has been made to  
the Council.

AND WHEREAS the Council has held a public hearing  
thereon after duly giving notice of the time and place of such  
hearing.

NOW THEREFORE the Council of The Corporation of the  
District of Burnaby ENACTS as follows:

1. This By-law may be cited as "BURNABY ZONING BY-LAW  
1965, AMENDMENT BY-LAW NO. 22 , 1976 ."
2. The Map (hereinafter called "Map 'A'"), attached to  
and forming an integral part of By-Law No. 4742, being "Burnaby  
Zoning By-Law 1965", and designated as the Official Zoning Map  
of The Corporation of the District of Burnaby, is hereby amended  
according to the Map (hereinafter called "Map 'B'"), marginally  
numbered R.Z. 680 , annexed to this By-law, and in accord-  
ance with the explanatory legend, notations, references and  
boundaries designated, described, delimited and specified in  
particularity shown upon said Map 'B'; and the various boundaries  
and districts shown upon said Map 'B' respectively are an amend-  
ment of and in substitution for the respective districts, designated  
and marked on said Map 'A' insofar as the same are changed, modified  
or varied thereby, and the said Map 'A' shall be deemed to be and  
is hereby declared to be amended accordingly and the said Map 'B'  
is hereby declared to be and shall form an integral part of said  
Map 'A', as if originally incorporated therein and shall be inter-  
preted accordingly.

3. The Comprehensive Development Plan entitled "Enclave 13, Burnaby, B.C.", prepared by Raymond Letkeman, Architect, and comprising complete architectural plans and landscape drawings, and on file in the office of the Director of Planning, is deemed to be attached to and form part of this bylaw.

Read a first time this 26th day of APRIL 1976.

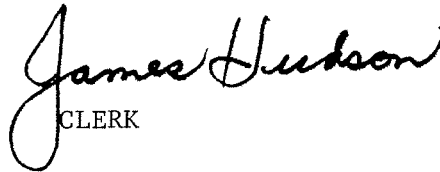
Read a second time this 26th day of APRIL 1976.

Read a third time this 21st day of JUNE 1976.

Reconsidered and adopted by all members of the Council  
this 15th day of JUNE 1981.



MAYOR



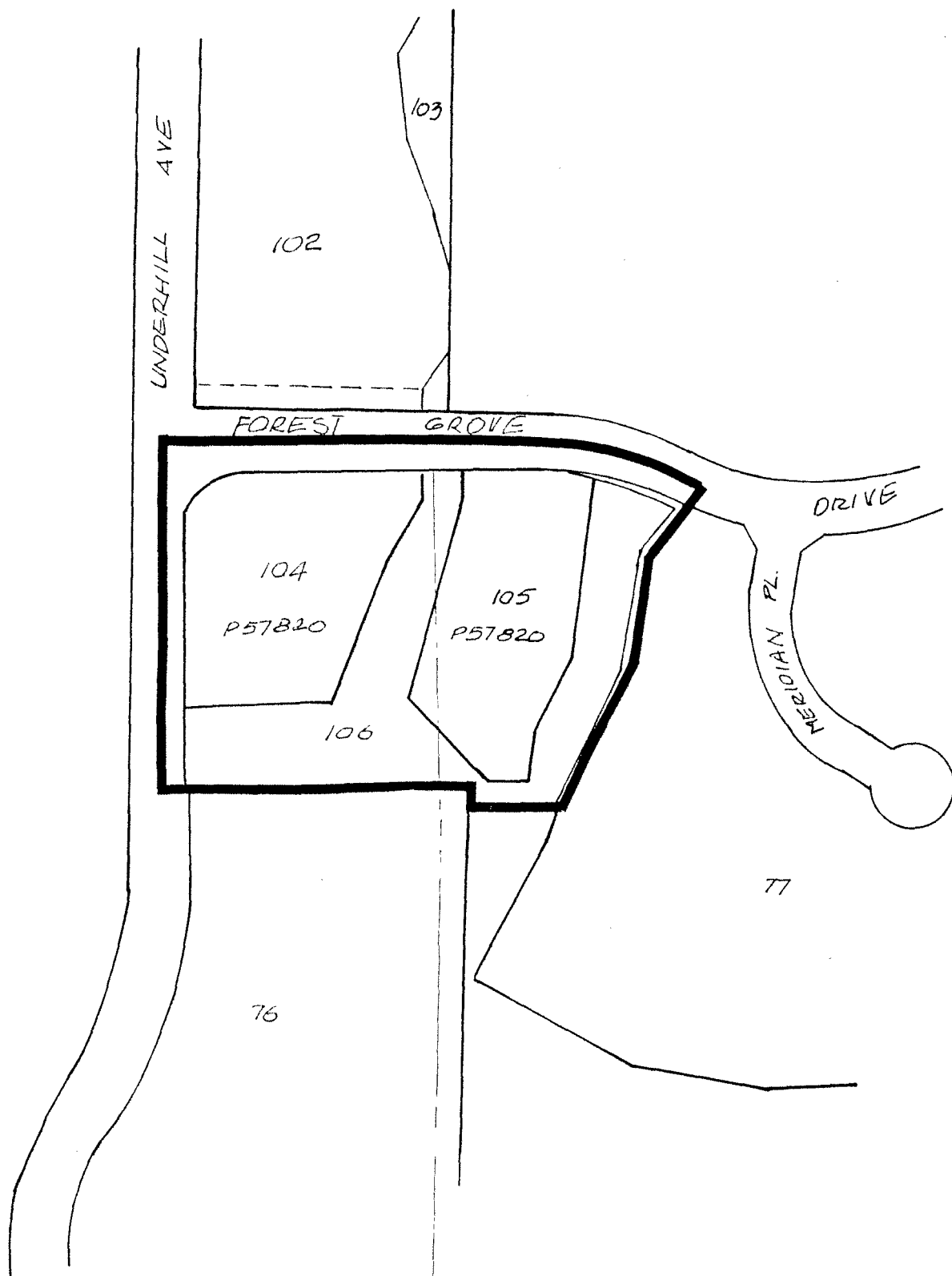
CLERK

BYLAW NUMBER 6841 BEING A BYLAW TO AMEND  
BYLAW NUMBER 4742 BEING THE BURNABY ZONING BYLAW 1965

PROPERTY REZONED TO: CD COMPREHENSIVE DEVELOPMENT DISTRICT

Lots 104, 105, 106, D.L. 142/143, Plan 57820

2



THE AREA(S) SHOWN ABOVE  
OUTLINED IN BLACK (—)  
IS (ARE) REZONED:

FROM: A2 SMALL HOLDINGS DISTRICT  
M3 HEAVY INDUSTRIAL DISTRICT  
TO: CD COMPREHENSIVE DEVELOPMENT DISTRICT

PLANNING DEPARTMENT		THE CORPORATION OF THE DISTRICT OF BURNABY	
SCALE	1" = 200'	OFFICIAL ZONING MAP	
DRAWN	GL		
DATE	83 02 22		
		No. RZ 680	