

THE CORPORATION OF THE DISTRICT OF BURNABY

BY-LAW NO. 6787

A BY-LAW to Stop Up and Close to Traffic
a Portion of Highway.

WHEREAS that portion of highway in District Lot Seventy-Four (74), shown outlined in red on the plan hereunto annexed, was dedicated by Plan 27729 deposited in the Land Registry Office at the City of New Westminster, Province of British Columbia.

AND WHEREAS the said portion of highway is no longer required.

NOW THEREFORE the Council of The Corporation of the District of Burnaby ENACTS as follows:

1. This By-law may be cited as "BURNABY ROAD CLOSING BY-LAW NO. 9, 1975".
2. That portion of highway in District Lot Seventy-Four (74) dedicated by Plan 27729, Group One (1), New Westminster District, shown outlined in red on the plan annexed hereto prepared by Bryan S. Berting, B.C.L.S., certified correct on the 4th day of December, 1975, is hereby stopped up and closed to traffic.
3. The Mayor and Clerk are hereby authorized and empowered to petition the Lieutenant-Governor in Council to abandon the said portion of highway and vest title thereto in National Machinery Company Limited, the registered owner in fee simple of the contiguous Lot 173, District Lot 74, Group 1, Plan 49150, ^{New Westminster District,} a body corporate having its registered office at Suite 500 - 475 Howe Street, in the City of Vancouver, Province of British Columbia.

Read a first time this 15th day of December, 1975.

Read a second time this 15th day of December, 1975.

Read a third time this 15th day of December, 1975.

Reconsidered and adopted this 29th day of December, 1975.



[Signature]
MAYOR
[Signature]
CLERK

N^o 6181 FOR A PORTION OF ROAD IN D.L.74, GP.I,
N.W.D. DEDICATED BY PLAN 27729

Deposited in the Land
Registry Office at New
Westminster, B.C. this
day of
197.

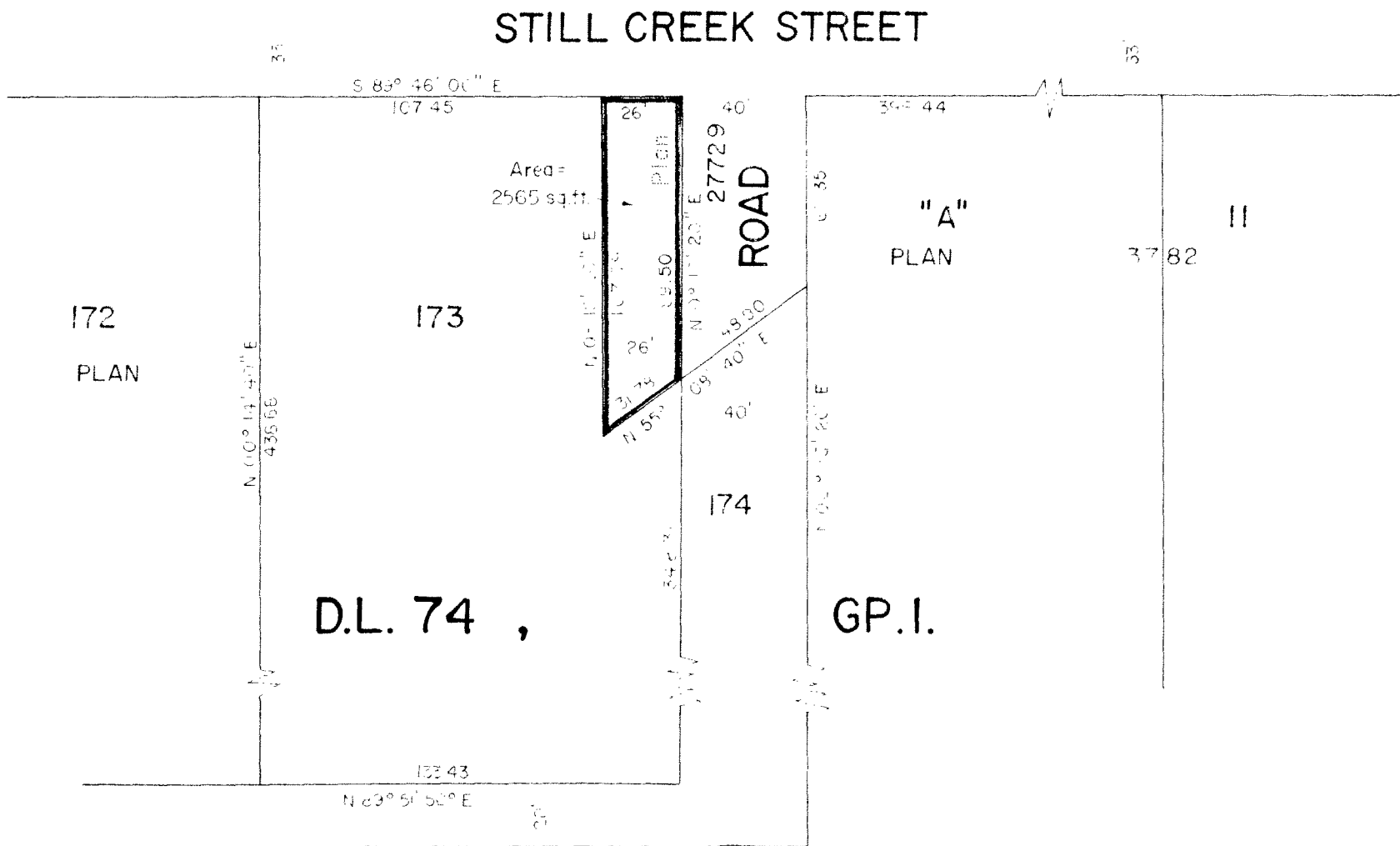
"This plan lies within the Greater Vancouver Regional District."

Scale : 1 inch = 40 feet

Bearings are astronomic and are derived from plan 27729.

D.L. BOUNDARY

Registrar



The Corporation of the District of Burnaby,

Certified correct according to
Land Registry Office records.
Dated this 4 day of Dec. 1975.

The Corporation of the District of Burnaby,
Design Division, Engineering Department,
4949 Canada Way, Burnaby 2, B.C.

Mayor :

Municipal Clerk :

File : 750726 (ii)