

THE CORPORATION OF THE DISTRICT OF BURNABY

BY-LAW NO. 6735

A BY-LAW to amend By-Law No. 4742, being
"Burnaby Zoning By-Law 1965"

WHEREAS application for rezoning has been made to the
Council.

AND WHEREAS the Council has held a public hearing thereon
after duly giving notice of the time and place of such hearing.

NOW THEREFORE the Council of The Corporation of the District
of Burnaby ENACTS as follows:

1. This By-Law may be cited as "BURNABY ZONING BY-LAW 1965,
AMENDMENT BY-LAW NO. 48, 1975".
2. The Map (hereinafter called "Map "A"") attached to and
forming an integral part of By-Law No. 4742, being "Burnaby Zoning By-Law
1965", and designated as the Official Zoning Map of The Corporation of
the District of Burnaby, is hereby amended according to the Map (here-
inafter called "Map "B""), marginally numbered R.Z. 644
annexed to this By-Law, and in accordance with the explanatory legend,
notations, references and boundaries designated, described, delimited
and specified in particularity shown upon said Map "B"; and the various
boundaries and districts shown upon said Map "B" respectively are an
amendment of and in substitution for the respective districts, designated
and marked on said Map "A" insofar as the same are changed, modified or
varied thereby, and the said Map "A" shall be deemed to be and is hereby
declared to be amended accordingly and the said Map "B" is hereby declared
to be and shall form an integral part of said Map "A", as if originally
incorporated therein, and shall be interpreted accordingly.

Read a first time this 27th day of October, 1975

Read a second time this 27th day of October, 1975

Read a third time this 3rd day of April, 1976

Reconsidered and adopted by an affirmative vote of at least
two-thirds of all the members of the Council this 10th day of May,
19 76.

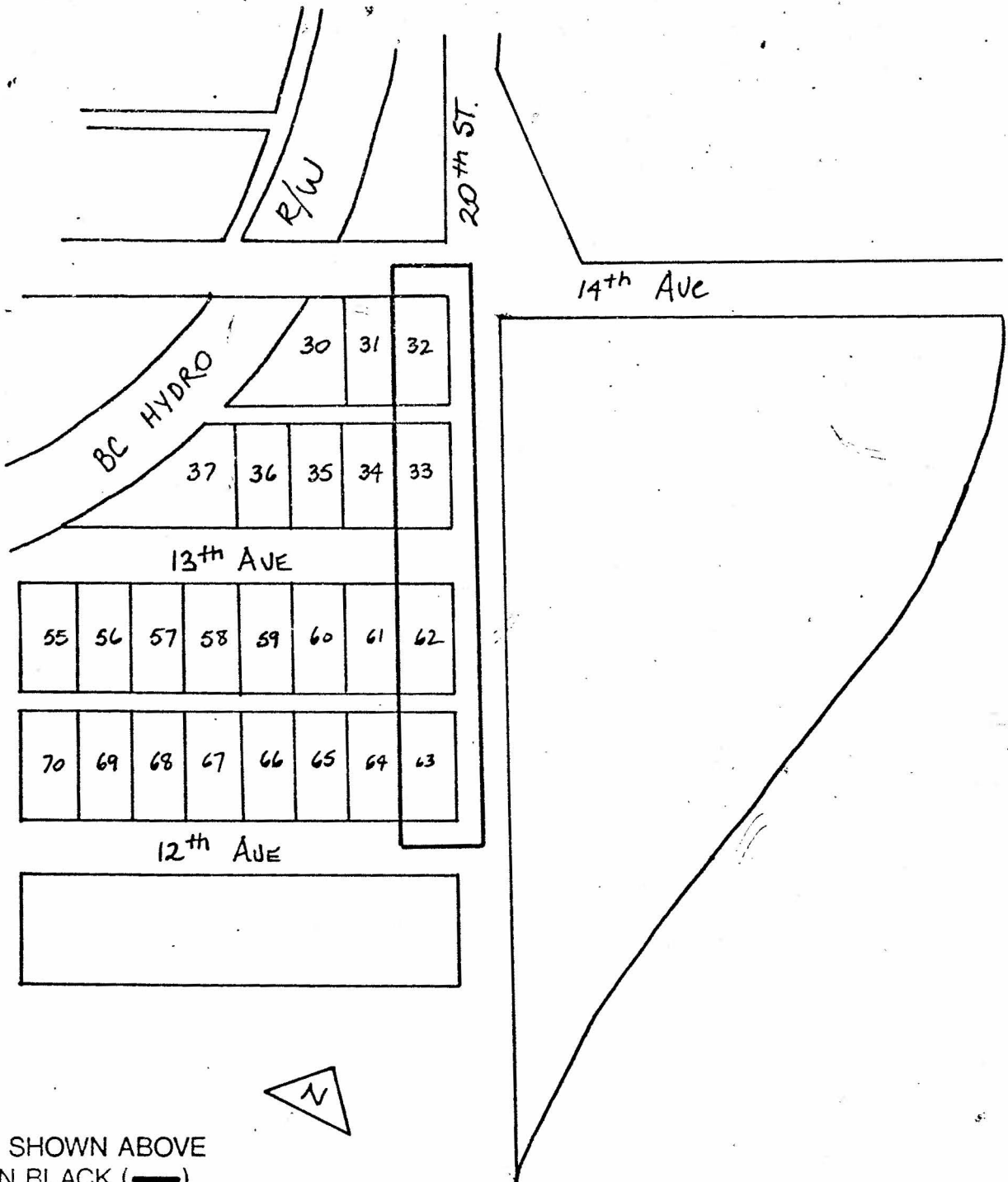


James Hudson
MAYOR
James Hudson
CLERK

BYLAW NUMBER 6735 BEING A BYLAW TO AMEND
 BYLAW NUMBER 4742 BEING THE BURNABY ZONING BYLAW 1965

PROPERTY REZONED TO: General Industrial District (M2)

- (a) Lot 63, Blk. 8, D.L. 171, Plan 2686
- (b) Lot 62, Blk. 8, D.L. 171, Plan 2686
- (c) Lot 33, Blk. 8, D.L. 171, Plan 2686
- (d) Lot 32, Blk. 8, D.L. 171, Plan 2686



THE AREA(S) SHOWN ABOVE
 OUTLINED IN BLACK (—)
 IS (ARE) REZONED:

FROM: Residential District (R5)
 TO: General Industrial District (M2)

PLANNING DEPARTMENT		THE CORPORATION OF THE DISTRICT OF BURNABY	
SCALE	1:200	OFFICIAL ZONING MAP	
DRAWN	PDS		
DATE	01/75		