

THE CORPORATION OF THE DISTRICT OF BURNABY

BY-LAW NO. 6721

A BY-LAW to amend By-Law No. 4742, being  
"Burnaby Zoning By-Law 1965"

WHEREAS application for rezoning has been made to the  
Council.

AND WHEREAS the Council has held a public hearing thereon  
after duly giving notice of the time and place of such hearing.

NOW THEREFORE the Council of The Corporation of the District  
of Burnaby ENACTS as follows:

1. This By-Law may be cited as "BURNABY ZONING BY-LAW 1965,  
AMENDMENT BY-LAW NO. 36, 1975".
2. The Map (hereinafter called "Map "A"") attached to and  
forming an integral part of By-Law No. 4742, being "Burnaby Zoning By-Law  
1965", and designated as the Official Zoning Map of The Corporation of  
the District of Burnaby, is hereby amended according to the Map (here-  
inafter called "Map "B""), marginally numbered R.Z. 630  
annexed to this By-Law, and in accordance with the explanatory legend,  
notations, references and boundaries designated, described, delimited  
and specified in particularity shown upon said Map "B"; and the various  
boundaries and districts shown upon said Map "B" respectively are an  
amendment of and in substitution for the respective districts, designated  
and marked on said Map "A" insofar as the same are changed, modified or  
varied thereby, and the said Map "A" shall be deemed to be and is hereby  
declared to be amended accordingly and the said Map "B" is hereby declared  
to be and shall form an integral part of said Map "A", as if originally  
incorporated therein, and shall be interpreted accordingly.


Read a first time this 22nd day of September, 19 75.

Read a second time this 22nd day of September, 19 75.

Read a third time this 22nd day of September, 19 75.

Reconsidered and adopted by an affirmative vote of at least  
two-thirds of all the members of the Council this 29th day of September,  
1975.



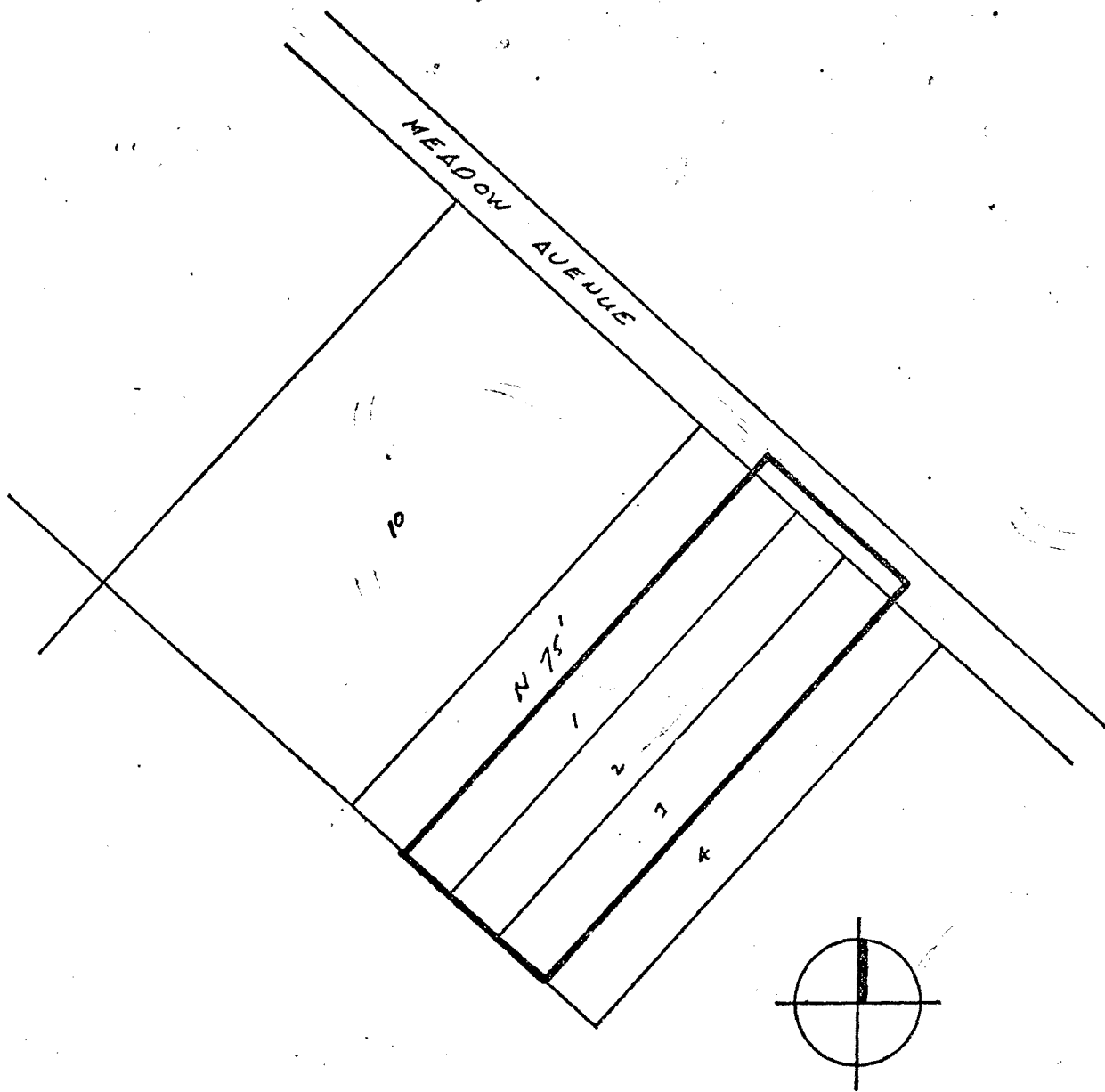
  
MAYOR  
James Hudson  
CLERK

BY-LAW NO. 6721 BEING A BY-LAW TO AMEND BY-LAW  
 NO. 4742 BEING THE BURNABY ZONING BY-LAW, 1965

PROPERTY REZONED TO Agricultural District (A1)

Lots 1, 2 & 3, Blk. 11, D.L. 155B, Plan 8390

MAP "B"



THE AREA(S) SHOWN ABOVE OUTLINED

IN BLACK (—) IS (ARE) REZONED:

FROM: Heavy Industrial District (M3)  
 TO: Agricultural District (A1)

PLANNING  
 DEPARTMENT

CORPORATION OF THE DISTRICT OF BURNABY

SCALE 1" = 200'

DRAWN CDR

DATE SEPT 1975

OFFICIAL ZONING MAP

NO RZ 630