

THE CORPORATION OF THE DISTRICT OF BURNABY

BY-LAW NO. 6719

A BY-LAW to Stop Up and Close to Traffic
Portions of Highway.

WHEREAS those portions of highway in District Lot Two Hundred and Six (206), shown outlined in red on the plan hereunto annexed, were dedicated by Plan 1323 deposited in the Land Registry Office at the City of New Westminster, Province of British Columbia.

AND WHEREAS the said portions of highway are no longer required.

NOW THEREFORE the Council of The Corporation of the District of Burnaby ENACTS as follows:

1. This By-law may be cited as "BURNABY ROAD CLOSING BY-LAW NO. 7, 1975".
2. Those portions of highway in District Lot Two Hundred and Six (206) dedicated by Plan 1323 shown outlined in red on the plan annexed hereto prepared by E. T. Wong, B.C.L.S., certified correct on the 8th day of September, 1975, are hereby stopped up and closed to traffic.
3. The Mayor and Clerk are hereby authorized and empowered to petition the Lieutenant-Governor in Council to abandon the said portions of highway and vest title thereto in the name of The Corporation of the District of Burnaby.


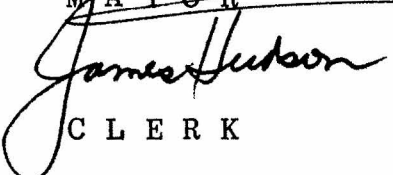
Read a first time this 22nd day of September, 1975.

Read a second time this 22nd day of September, 1975.

Read a third time this 22nd day of September, 1975.

Reconsidered and adopted this 29th day of September, 1975.

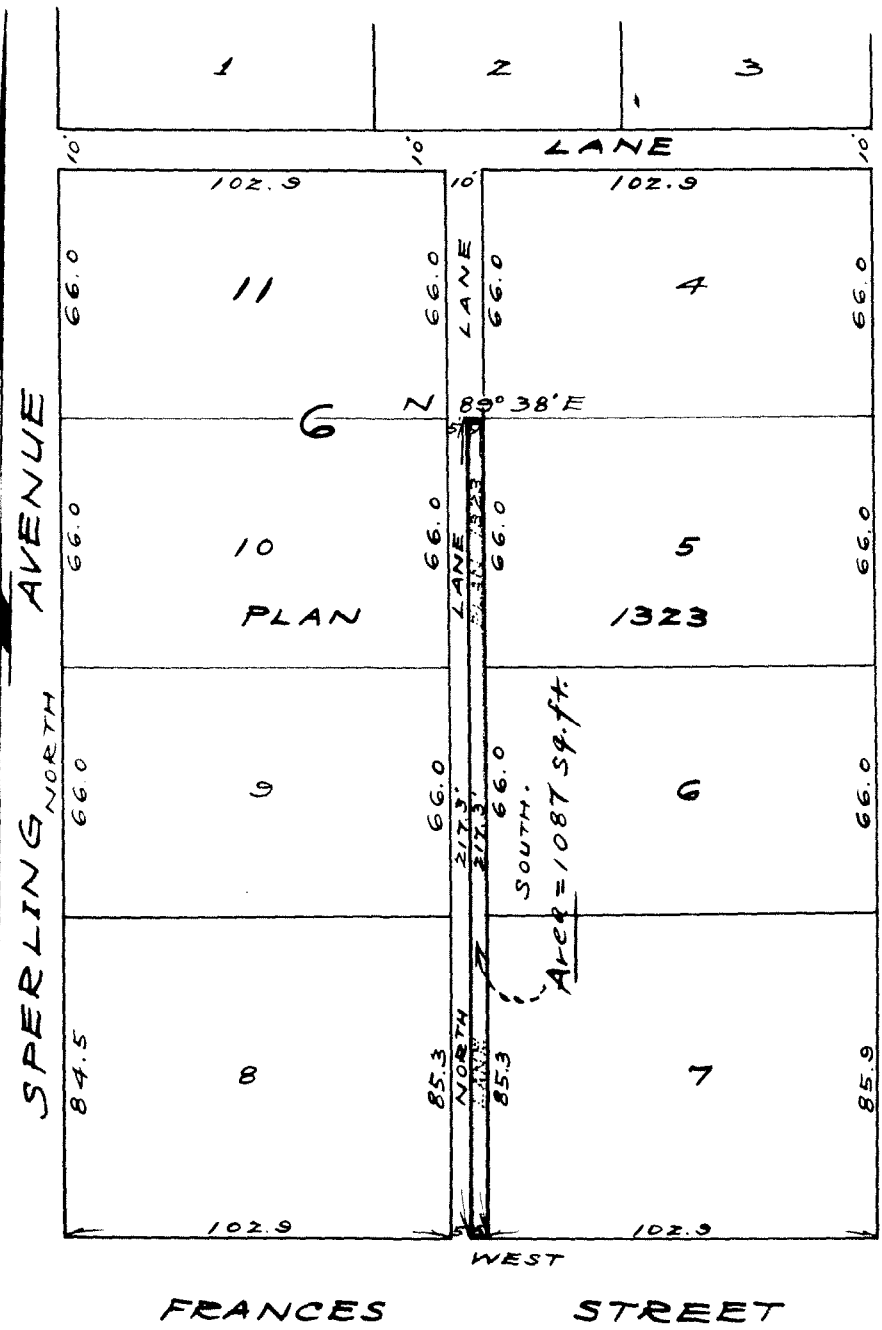



MAYOR

CLERK

EXPLANATORY PLAN TO
ACCOMPANY MUNICIPALITY
OF THE DISTRICT OF
BURNABY LANE CLOSING
BYLAW No. 6719 OF PART
OF LOT 6 BLOCK 4
DISTRICT LOT 206
GROUP ONE PLAN 1323
NEW WESTMINSTER
DISTRICT SCALE: 1 INCH = 40 FEET

Deposited in the Land Registry
 Office at New Westminster, B.C.
 this -- day of -----, 197--

 Registrar



CLARE AVENUE NORTH

Municipality of the District
 of Burnaby

 Mayor

 Clerk

- This plan lies within the Greater Vancouver Regional District.

VERIFIED CORRECT ACCORDING TO
 LAND REGISTRY OFFICE RECORDS:
 THIS IS 8th DAY OF SEPTEMBER, 1975.

Bearings are astronomic and
 are referred to Sperling Avenue
 assumed due North.

G. J. Wong
 P.C.L.S.

Ken K. Wong & Associates
 Dominion & B.C. Land Surveyors
 3723 E. Hastings Street
 Burnaby, B.C. V5C 2H6