

THE CORPORATION OF THE DISTRICT OF BURNABY

BY-LAW NO. 6711

A BY-LAW to amend By-Law No. 4742, being
"Burnaby Zoning By-Law 1965"

WHEREAS application for rezoning has been made to the
Council.

AND WHEREAS the Council has held a public hearing thereon
after duly giving notice of the time and place of such hearing.

NOW THEREFORE the Council of The Corporation of the District
of Burnaby ENACTS as follows:

1. This By-Law may be cited as "BURNABY ZONING BY-LAW 1965,
AMENDMENT BY-LAW NO. 33, 1975".

2. The Map (hereinafter called "Map "A"") attached to and
forming an integral part of By-Law No. 4742, being "Burnaby Zoning By-Law
1965", and designated as the Official Zoning Map of The Corporation of
the District of Burnaby, is hereby amended according to the Map (here-
inafter called "Map "B""), marginally numbered R.Z. 627
annexed to this By-Law, and in accordance with the explanatory legend,
notations, references and boundaries designated, described, delimited
and specified in particularity shown upon said Map "B"; and the various
boundaries and districts shown upon said Map "B" respectively are an
amendment of and in substitution for the respective districts, designated
and marked on said Map "A" insofar as the same are changed, modified or
varied thereby, and the said Map "A" shall be deemed to be and is hereby
declared to be amended accordingly and the said Map "B" is hereby declared
to be and shall form an integral part of said Map "A", as if originally
incorporated therein, and shall be interpreted accordingly.


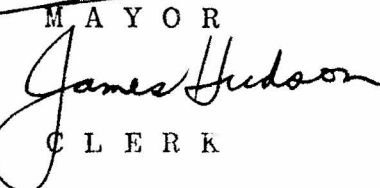
Read a first time this 22nd day of September, 1975.

Read a second time this 22nd day of September, 1975.

Read a third time this 22nd day of September, 1975.

Reconsidered and adopted by an affirmative vote of at least
two-thirds of all the members of the Council this 29th day of September,
1975.




MAYOR

CLERK

BY-LAW NO. 6711

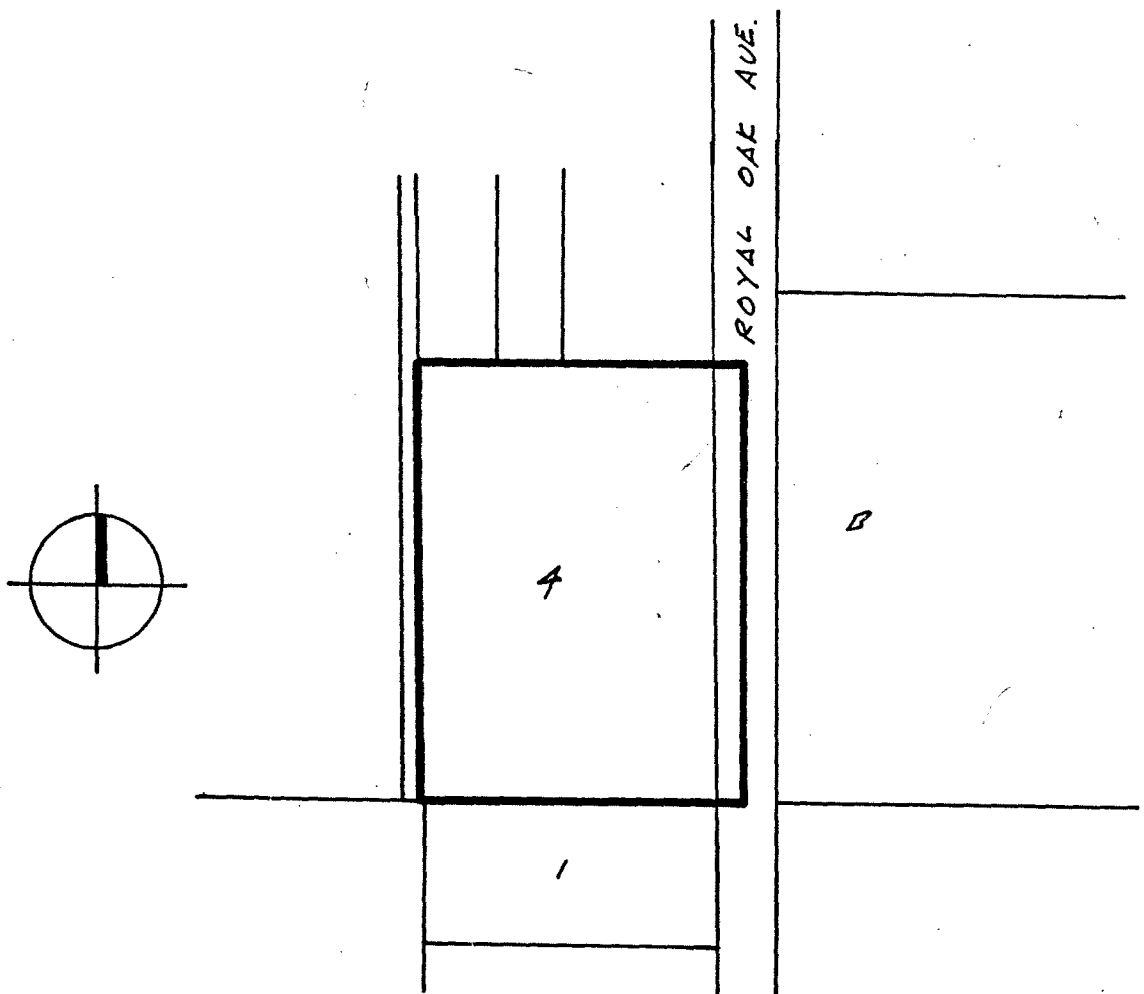
BEING A BY-LAW TO AMEND BY-LAW

NO. 4742 BEING THE BURNABY ZONING BY-LAW, 1965

PROPERTY REZONED TO Truck Gardening District (A3)

Lot 4, Blk. 2 E 1/2, D.L. 162, Plan 5176

MAP "B"



THE AREA(S) SHOWN ABOVE OUTLINED

IN BLACK (—) IS (ARE) REZONED:

FROM: Heavy Industrial District (M3)

TO: Truck Gardening District (A3)

PLANNING
DEPARTMENT

CORPORATION OF THE DISTRICT OF BURNABY

SCALE 1" = 200'

DRAWN CBR

DATE SEPT. 1975

OFFICIAL ZONING MAP

NO R 7 677