

THE CORPORATION OF THE DISTRICT OF BURNABY

BY-LAW NO. 6628

A BY-LAW to Stop Up and Close to Traffic a
Portion of Road.

WHEREAS that portion of road shown outlined in red on plan annexed hereto was established as road by plan deposited in the Land Registry Office at the City of New Westminster, Province of British Columbia, under Number 3037.

AND WHEREAS the said portion of road is no longer required for road purposes.

NOW THEREFORE the Council of The Corporation of the District of Burnaby ENACTS as follows:

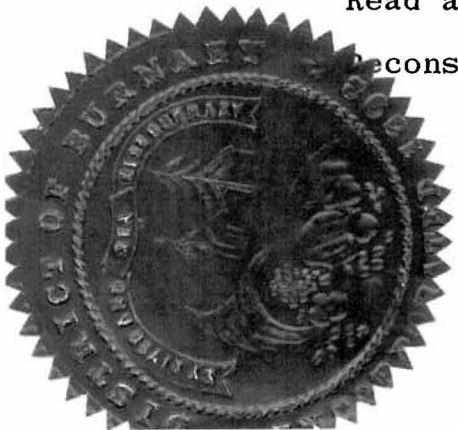
1. This By-law may be cited as "BURNABY ROAD CLOSING BY-LAW NO. 3, 1975".
2. That portion of road being all and singular that certain parcel or tract of land and premises situate, lying and being in the Municipality of Burnaby, in the Province of British Columbia, and being that portion of road in District Lot Fifty-Three (53), Group One (1), New Westminster District, dedicated by Plan 3037, as shown outlined in red on the plan prepared by B. S. Berting, B.C.L.S., certified correct the 4th day of February, 1975, a copy of which is hereunto annexed, is hereby stopped up and closed to traffic.
3. The Mayor and Clerk are hereby authorized and empowered to petition the Lieutenant-Governor in Council to abandon the said portion and vest title thereto in the name of The Corporation of the District of Burnaby.

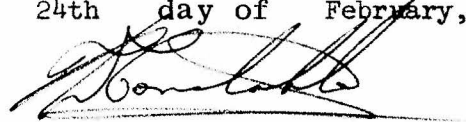

Read a first time this 17th day of February, 1975.

Read a second time this 17th day of February, 1975.

Read a third time this 17th day of February, 1975.

Reconsidered and adopted this 24th day of February, 1975.



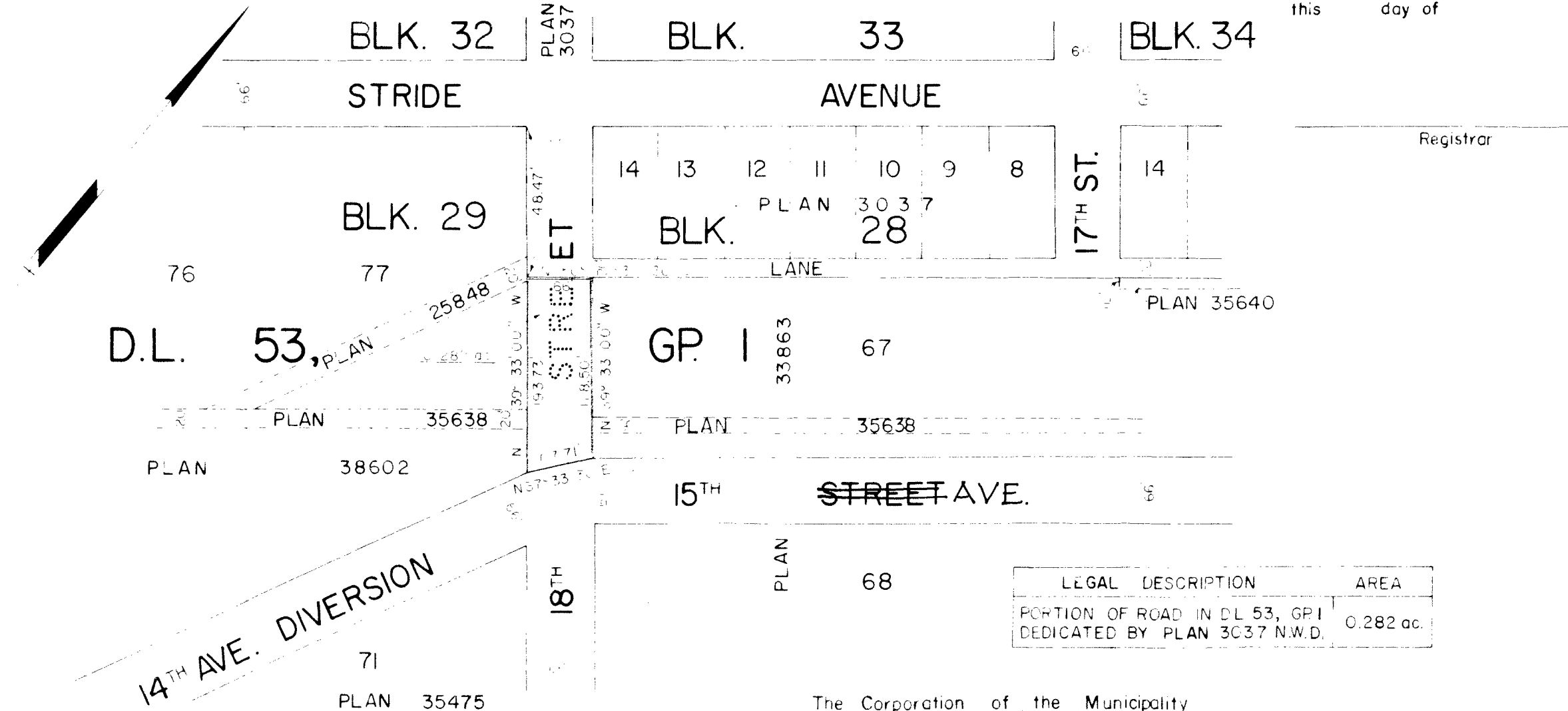

M A Y O R

C L E R K

THE DISTRICT OF BURNABY ROAD - CLOSING BY-LAW
 NO. 6628 FOR A PORTION OF ROAD IN D.L. 53,
 GP. I, N.W.D. DEDICATED BY PLAN 3037.

Scale: 1 inch = 100 ft.

Bearings are astronomic and are derived from plan 33863 deposited.

Deposited in the Land Registry
 Office at New Westminster, B.C.,
 this _____ day of _____



Registrar

The Corporation of the District of Burnaby,
 Design Division, Engineering Department,
 4949 Canada Way, Burnaby 2, B.C.

"This plan lies within the Greater
 Vancouver Regional District."

The Corporation of the Municipality
 of Burnaby.

Mayor: _____

Municipal Clerk: _____

Certified correct according to
 Land Registry Office records.
 Dated this 27th day of February
 1975.

[Signature]
 B.C.L.S.