

THE CORPORATION OF THE DISTRICT OF BURNABY

BY-LAW NO. 6602

A BY-LAW to Stop Up and Close to Traffic  
Portions of Road

WHEREAS that portion of road shown outlined in red on plan annexed hereto was established as road by those certain plans deposited in the Land Registry Office at the City of New Westminster, Province of British Columbia, under Number 15683.

AND WHEREAS the said portion of road is no longer required for road purposes.

NOW THEREFORE the Council of The Corporation of the District of Burnaby ENACTS as follows:

1. This By-Law may be cited as "BURNABY ROAD CLOSING BY-LAW NO. 7, 1974".
2. That portion of road being all and singular those certain parcels or tracts of land and premises situate, lying and being in the Municipality of Burnaby, in the Province of British Columbia, and being portions of Lot "A" of Block Two (2) of the North half of District Lot One Hundred Forty-Nine (149), Group One (1), Plan 15683, New Westminster District, dedicated as road by Plan 15683 and as shown outlined in red on By-Law Plan prepared by B. S. Berting, B.C.L.S. and dated the 4th day of December, 1974, a copy of which is attached hereto, is hereby stopped up and closed to traffic.
3. The Mayor and Clerk are hereby authorized and empowered to petition the Lieutenant-Governor in Council to abandon the said

portions and vest title thereto in the name of The Corporation  
of the District of Burnaby.

Read a first time this 30th day of December, 1974 .

Read a second time this 30th day of December, 1974. .

Read a third time this 30th day of December, 1974 .

Reconsidered and adopted this 13th day of January,

1975 .



A handwritten signature in cursive script, appearing to read "Donald", is written over the printed name.

M A Y O R

A handwritten signature in cursive script, appearing to read "James Hudson", is written over the printed name.

C L E R K

BY-LAW PLAN TO ACCOMPANY THE CORPORATION OF THE DISTRICT OF BURNABY ROAD-CLOSING BY-LAW No. 6602 FOR PORTIONS OF LANE IN LOT "A" OF BLOCK 2, NORTH 1/2 OF THE S.W. 1/4 OF D.L.149, GROUP I, DEDICATED BY PLAN 15683, N.W.D.

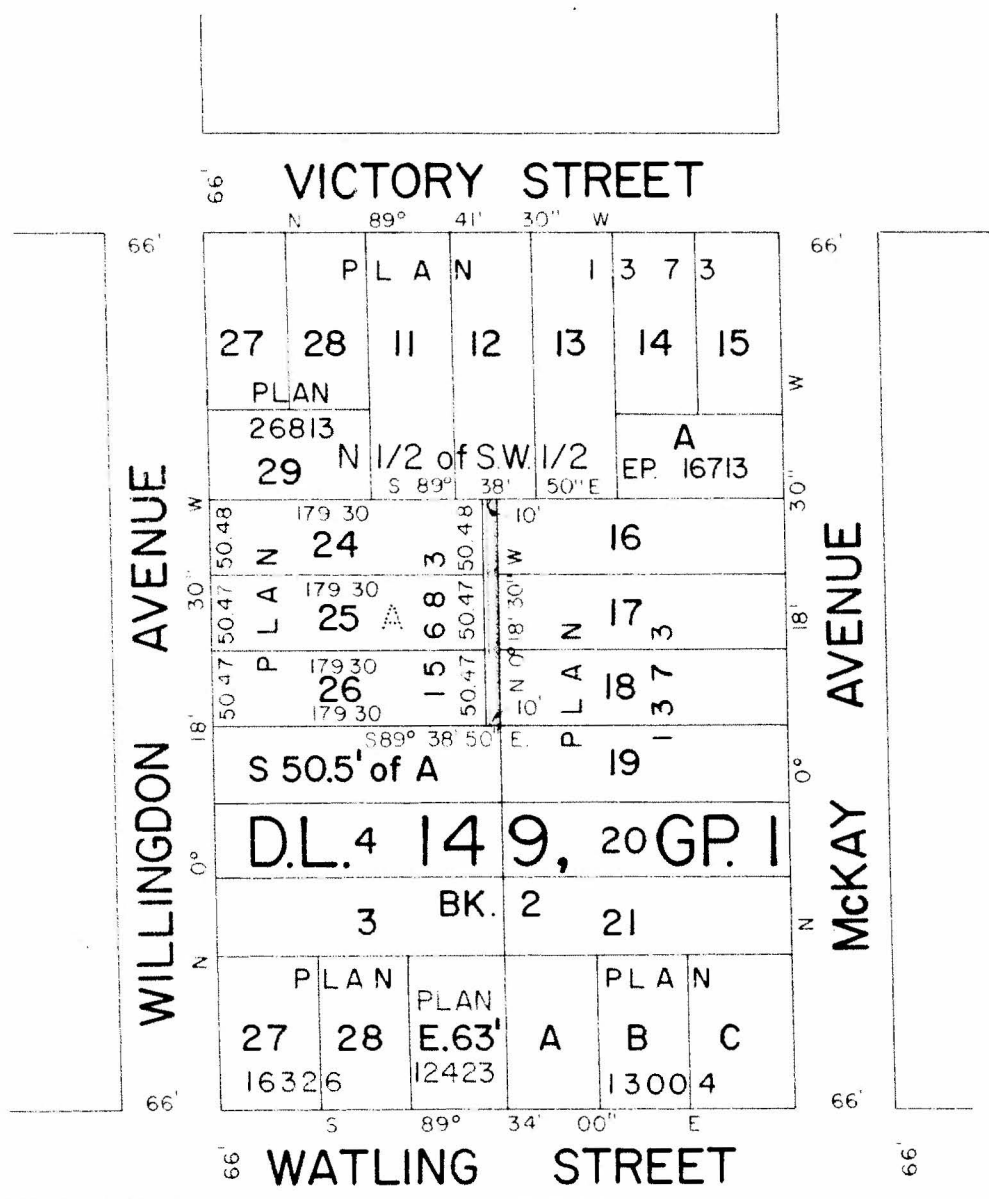
PLAN

Scale : 1 in. = 100 ft.

Deposited in the Land Registry Office at New Westminster, B.C. this day of 1974.

Bearings are astronomic and are derived from plan 26813 deposited.

Registrar



The Corporation of the District of Burnaby.

Mayor:

Municipal Clerk:

This plan lies within the Greater Vancouver Regional District.

The Corporation of the District of Burnaby, Design Division, Engineering Department, 4949 Canada Way, Burnaby 2, B.C.

Certified correct according to Land Registry Office records Dated this 4<sup>th</sup> day of December 1974.

*Asst. Registrar*