

THE CORPORATION OF THE DISTRICT OF BURNABY

BY-LAW NO. 6338

A BY-LAW to amend By-Law No. 4742, being
"Burnaby Zoning By-Law 1965"

WHEREAS application for rezoning has ~~been~~ been made to the Council.

AND WHEREAS the Council has held a public hearing thereon after
duly giving notice of the time and place of such hearing.

NOW THEREFORE the Council of The Corporation of the District of
Burnaby ENACTS as follows:

1. This By-Law may be cited as "BURNABY ZONING BY-LAW 1965, AMENDMENT
BY-LAW NO. 27, 19 73".
2. The Map (hereinafter called "Map "A'") attached to and forming an
integral part of By-Law No. 4742, being "Burnaby Zoning By-Law 1965", and
designated as the Official Zoning Map of The Corporation of the District of
Burnaby, is hereby amended according to the Map (hereinafter called "Map "B'"),
marginally numbered R.Z. 506 , annexed to this By-Law, and in accordance with
the explanatory legend, notations, references and boundaries designated, des-
cribed, delimited and specified in particularity shown upon said Map "B"; and
the various boundaries and districts shown upon said Map "B" respectively are
an amendment of and in substitution for the respective districts, designated
and marked on said Map "A" insofar as the same are changed, modified or varied
thereby, and the said Map "A" shall be deemed to be and is hereby declared to
be amended accordingly and the said Map "B" is hereby declared to be and shall
form an integral part of said Map "A", as if originally incorporated therein,
and shall be interpreted accordingly.

Read a first time this 27th day of August, 1973.

Read a second time this 27th day of August, 1973.

Read a third time this 29th day of October, 19 73.

Reconsidered and adopted by an affirmative vote of at least two-
thirds of all the members of the Council this 26th day of November 1973.



A handwritten signature in black ink, appearing to be "R. B. ...", is written over a horizontal line.

M A Y O R

A handwritten signature in black ink, appearing to be "G. ...", is written over a horizontal line.

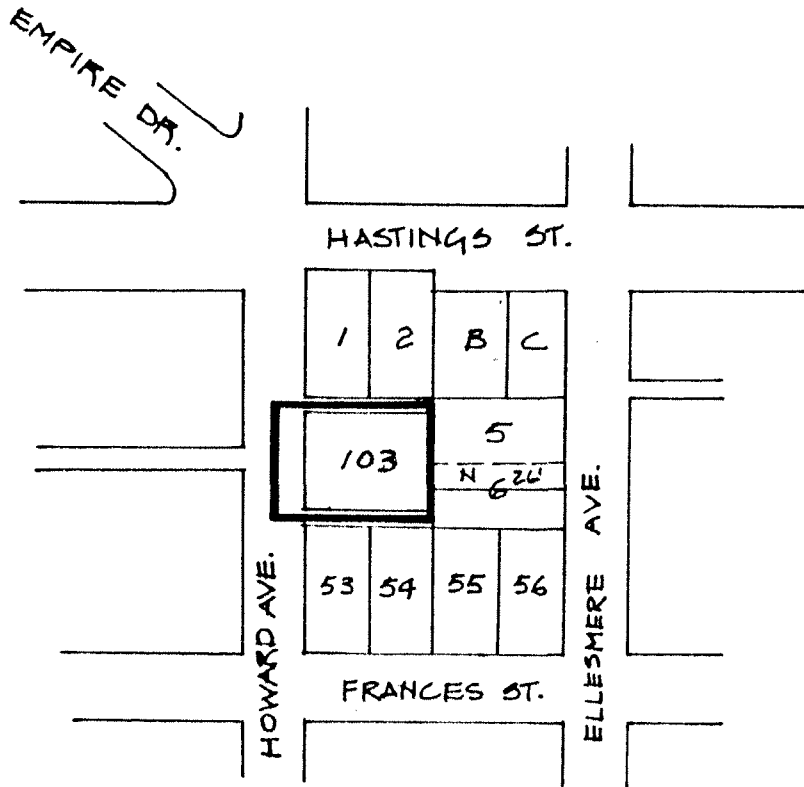
DEPUTY C L E R K

BY-LAW NO. 6338 BEING A BY-LAW AMEND BY-LAW NO. 4742 BEING THE BURNABY ZONING BY-LAW, 1965

PROPERTY REZONED TO Community Commercial District (C2)

Old Legal: Lot 52, D.L. 127, Plan 27911

New Legal: Lot 103, D.L. 127, Grp. 1, Plan 45265



THE AREA(S) SHOWN ABOVE OUTLINED
 IN BLACK (—) IS (ARE) REZONED:
 FROM: Residential District Four (R4)
 TO: Community Commercial District (C2)



PLANNING DEPARTMENT	
SCALE	1" = 200'
DRAWN	lbb
DATE	FEB., '74

CORPORATION OF THE DISTRICT OF BURNABY

OFFICIAL ZONING MAP

NO RZ 506

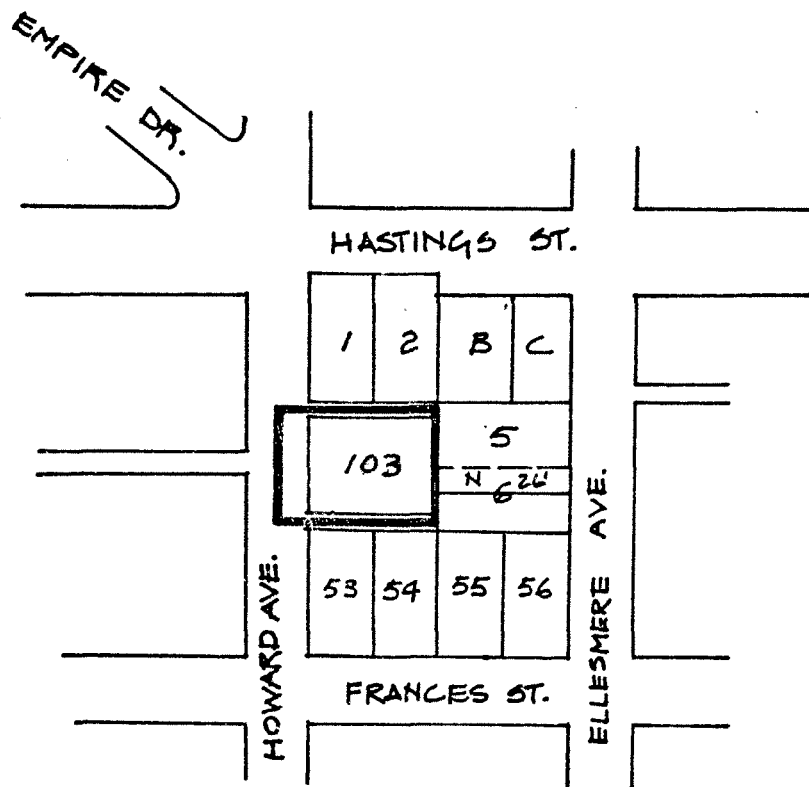
BY-LAW NO. 6338 BEING A BY-LAW TO AMEND BY-LAW NO. 4742 BEING THE BURNABY ZONING BY-LAW, 1965

PROPERTY REZONED TO Community Commercial District (C2)

Old Legal: Lot 52, D.L. 127, Plan 27911

New Legal: Lot 103, D.L. 127, Grp. 1, Plan 45265

MAP "B"



THE AREA(S) SHOWN ABOVE OUTLINED
 IN BLACK (—) IS (ARE) REZONED:
 FROM: Residential District Four (R4)
 TO: Community Commercial District (C2)



PLANNING DEPARTMENT	
SCALE	1"=200'
DRAWN	lbb
DATE	FEB., '74

CORPORATION OF THE DISTRICT OF BURNABY

OFFICIAL ZONING MAP

NO RZ 506