

THE CORPORATION OF THE DISTRICT OF BURNABY

BY-LAW NO. 6212

A BY-LAW to amend By-Law No. 4742, being
"Burnaby Zoning By-Law 1965".

WHEREAS application for rezoning has/~~was~~ been made to the Council.

AND WHEREAS the Council has held a public hearing thereon after duly giving notice of the time and place of such hearing.

NOW THEREFORE the Council of The Corporation of the District of Burnaby ENACTS as follows:

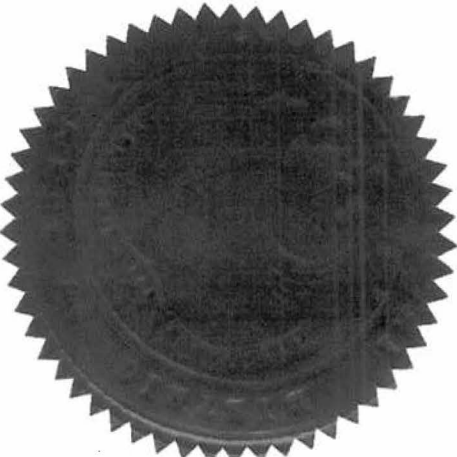
1. This By-law may be cited as "BURNABY ZONING BY-LAW 1965, AMENDMENT BY-LAW NO. 72, 19 72".
2. The Map (hereinafter called "Map "A"") attached to and forming an integral part of By-Law No. 4742, being "Burnaby Zoning By-Law 1965", and designated as the Official Zoning Map of The Corporation of the District of Burnaby, is hereby amended according to the Maps (hereinafter called "Maps"B"), marginally numbered R.Z. 467 to 479 inclusive, annexed to this By-Law, and in accordance with the explanatory legend, notations, references and boundaries designated, described, delimited and specified in particularity shown upon said Maps "B"; and the various boundaries and districts shown upon said Maps "B" respectively are an amendment of and in substitution for the respective districts, designated and marked on said Map "A" insofar as the same are changed, modified or varied thereby, and the said Map "A" shall be deemed to be and is hereby declared to be amended accordingly and the said Maps "B" ~~is~~ ^{are} hereby declared to be and shall form an integral part of said Map "A", as if originally incorporated therein, and shall be interpreted accordingly.

Read a first time this 18th day of December, 1972.

Read a second time this 18th day of December, 19 72.

Read a third time this 18th day of December, 19 72.

Reconsidered and adopted by an affirmative vote of at least two-thirds of all the members of the Council this 2nd day of January, 1973.



Robert W. Pettie
MAYOR

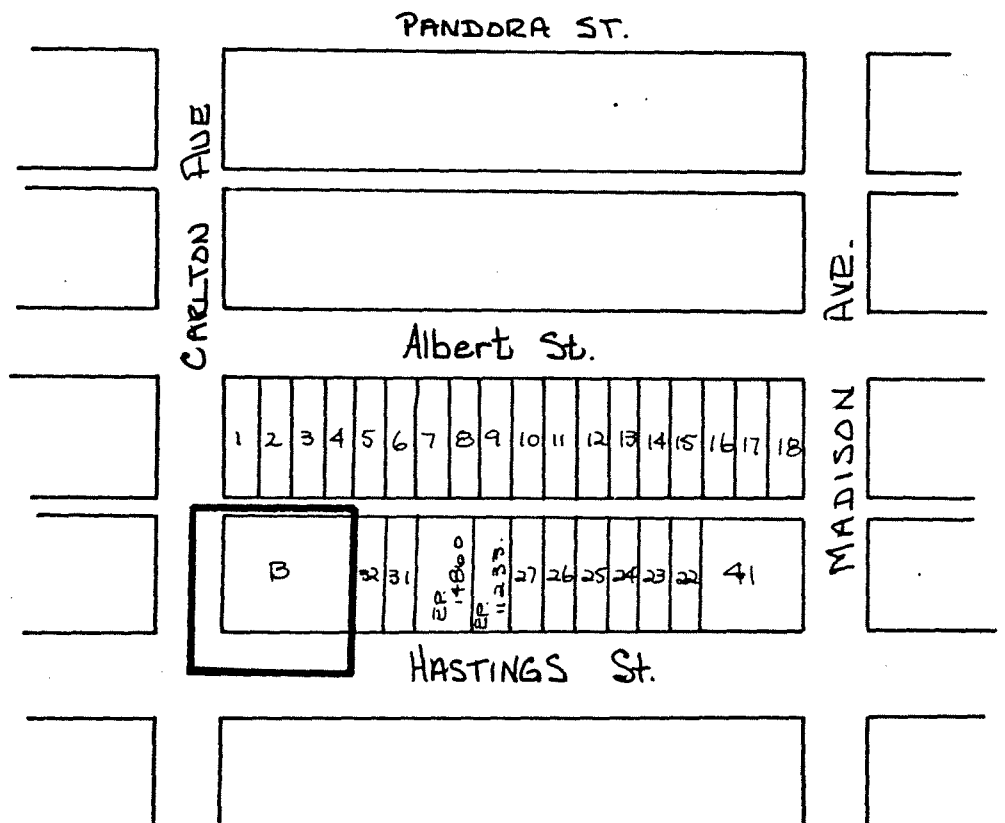
[Signature]
DEPUTY CLERK

BY-LAW NO. 6212 BEING A BY-LAW TO AMEND BY-LAW NO. 4742 BEING THE BURNABY ZONING BY-LAW, 1965

PROPERTY REZONED TO Service Commercial District (C4)

Legal: Lot B, Blk. 7, D. L. 121, Plan 1054

MAPS "B"



THE AREA(S) SHOWN ABOVE OUTLINED IN BLACK (—) IS (ARE) REZONED:

From: Gasoline Service Station District (C6)

To: Service Commercial District (C4)

PLANNING DEPARTMENT	
SCALE	J:200
DRAWN	JH
DATE	JAN 73

CORPORATION OF THE DISTRICT OF BURNABY

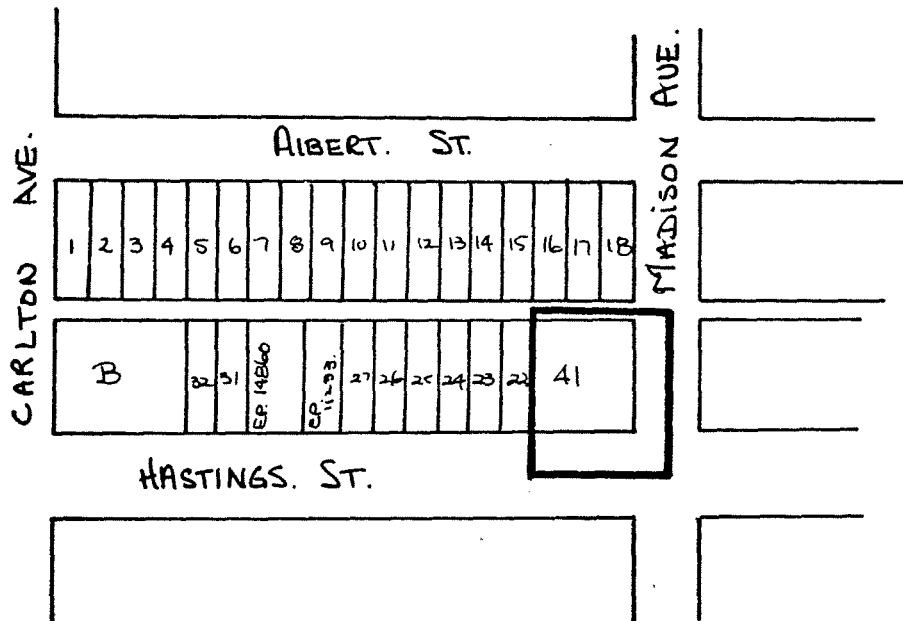
OFFICIAL ZONING MAP

NO RZ 467

BY-LAW NO. 6212 BEING A BY-LAW TO AMEND BY-LAW
 NO. 4742 BEING THE BURNABY ZONING BY-LAW, 1965

PROPERTY REZONED TO Service Commercial District (C4)

Legal: Lot 41, D.L. 121, Plan 27654



THE AREA(S) SHOWN ABOVE OUTLINED
 IN BLACK (—) IS (ARE) REZONED:

From: Gasoline Service Station District (C6)

To: Service Commercial District (C4)

PLANNING DEPARTMENT	
SCALE	1:200
DRAWN	JH
DATE	JAN 173.

CORPORATION OF THE DISTRICT OF BURNABY

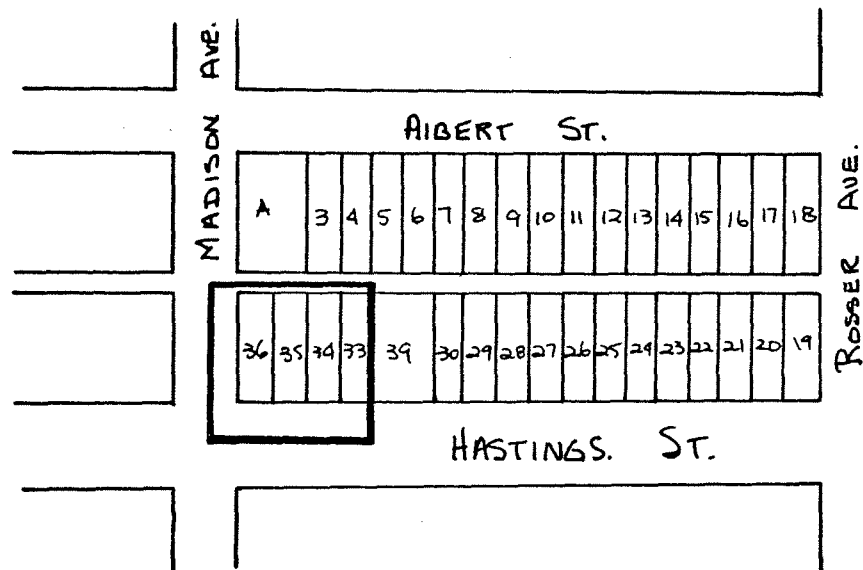
OFFICIAL ZONING MAP

NO RZ 468

BY-LAW NO. 6212 BEING A BY-LAW TO AMEND BY-LAW
 NO. 4742 BEING THE BURNABY ZONING BY-LAW, 1965

PROPERTY REZONED TO Service Commercial District (C4)

Legal: Lots 33 to 36, Block 6, D. L. 121



THE AREA(S) SHOWN ABOVE OUTLINED
 IN BLACK (—) IS (ARE) REZONED:

From: Gasoline Service Station District (C6)

To: Service Commercial District (C4)

PLANNING DEPARTMENT	
SCALE	1:200
DRAWN	JH
DATE	JAN 173

CORPORATION OF THE DISTRICT OF BURNABY

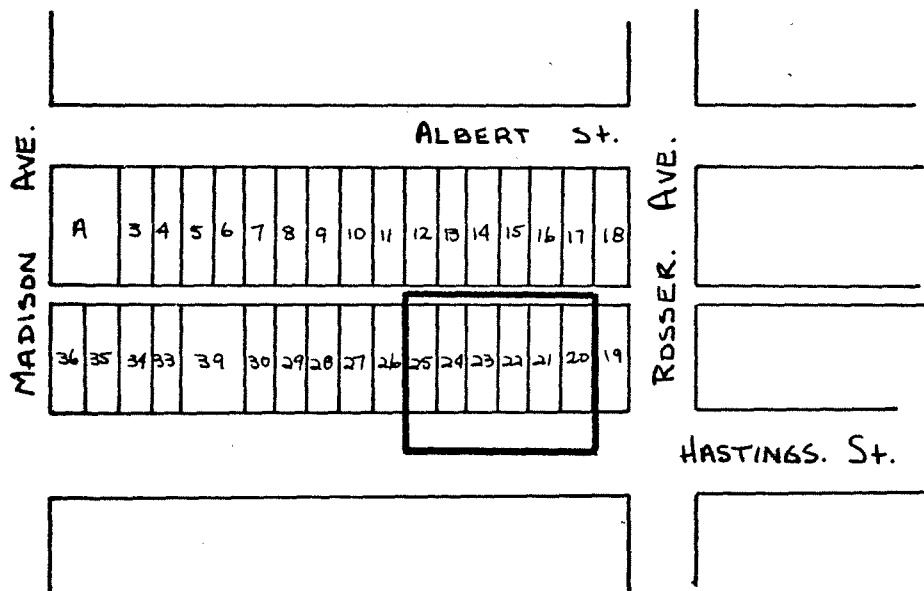
OFFICIAL ZONING MAP

NO RZ 469

BY-LAW NO. 6212 BEING A BY-LAW TO AMEND BY-LAW NO. 4742 BEING THE BURNABY ZONING BY-LAW, 1965

PROPERTY REZONED TO Service Commercial District (C4)

Legal: Lots 20 to 25, Blk. 6, D.L. 121, Plan 1054



THE AREA(S) SHOWN ABOVE OUTLINED IN BLACK (—) IS (ARE) REZONED:

From: Community Commercial District (C2)

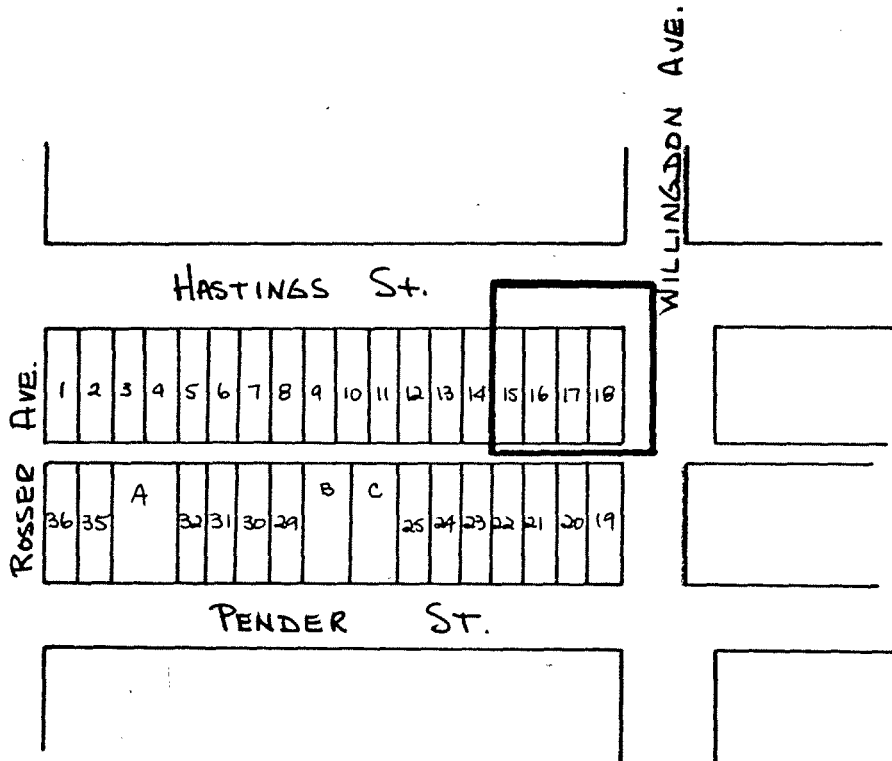
To: Service Commercial District (C4)

PLANNING DEPARTMENT		CORPORATION OF THE DISTRICT OF BURNABY	
SCALE	1:200	OFFICIAL ZONING MAP	
DRAWN	JH		
DATE	JAN. 73.		
		NO RZ 470	

BY-LAW NO. 6212 BEING A BY-LAW TO AMEND BY-LAW NO. 4742 BEING THE BURNABY ZONING BY-LAW, 1965

PROPERTY REZONED TO Service Commercial District (C4)

Legal: Lots 15 to 18, Except N. 20 ft., Blk. 12, D.L. 121, Plan 1054



THE AREA(S) SHOWN ABOVE OUTLINED IN BLACK (—) IS (ARE) REZONED:

From: Community Commercial District (C2)

To: Service Commercial District (C4)

PLANNING DEPARTMENT	
SCALE	1:200
DRAWN	JH
DATE	Jan 13.

CORPORATION OF THE DISTRICT OF BURNABY

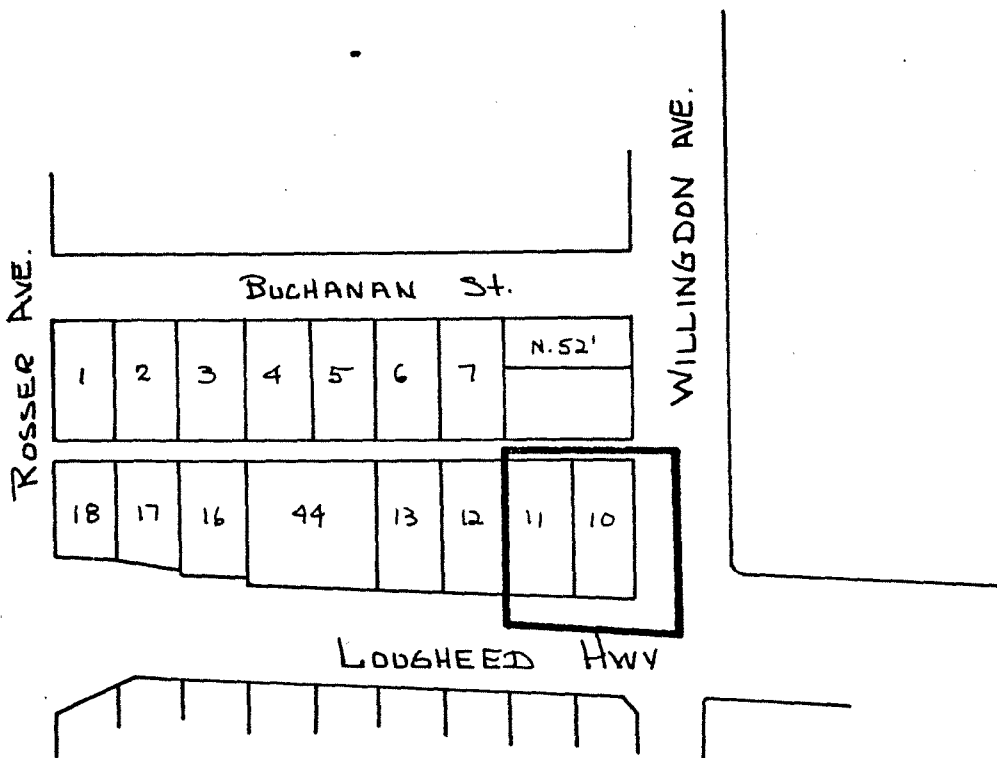
OFFICIAL ZONING MAP

NO RZ 471

BY-LAW NO. 6212 BEING A BY-LAW TO AMEND BY-LAW
 NO. 4742 BEING THE BURNABY ZONING BY-LAW, 1965

PROPERTY REZONED TO Service Commercial District (C4)

Legal: Lot 58, Blk. 3, D. L. 119, Plan 41580



THE AREA(S) SHOWN ABOVE OUTLINED
 IN BLACK (—) IS (ARE) REZONED:

From: Gasoline Service Station District (C6)

To: Service Commercial District (C4)

PLANNING DEPARTMENT	
SCALE	1:200
DRAWN	JH
DATE	JAN, 13

CORPORATION OF THE DISTRICT OF BURNABY

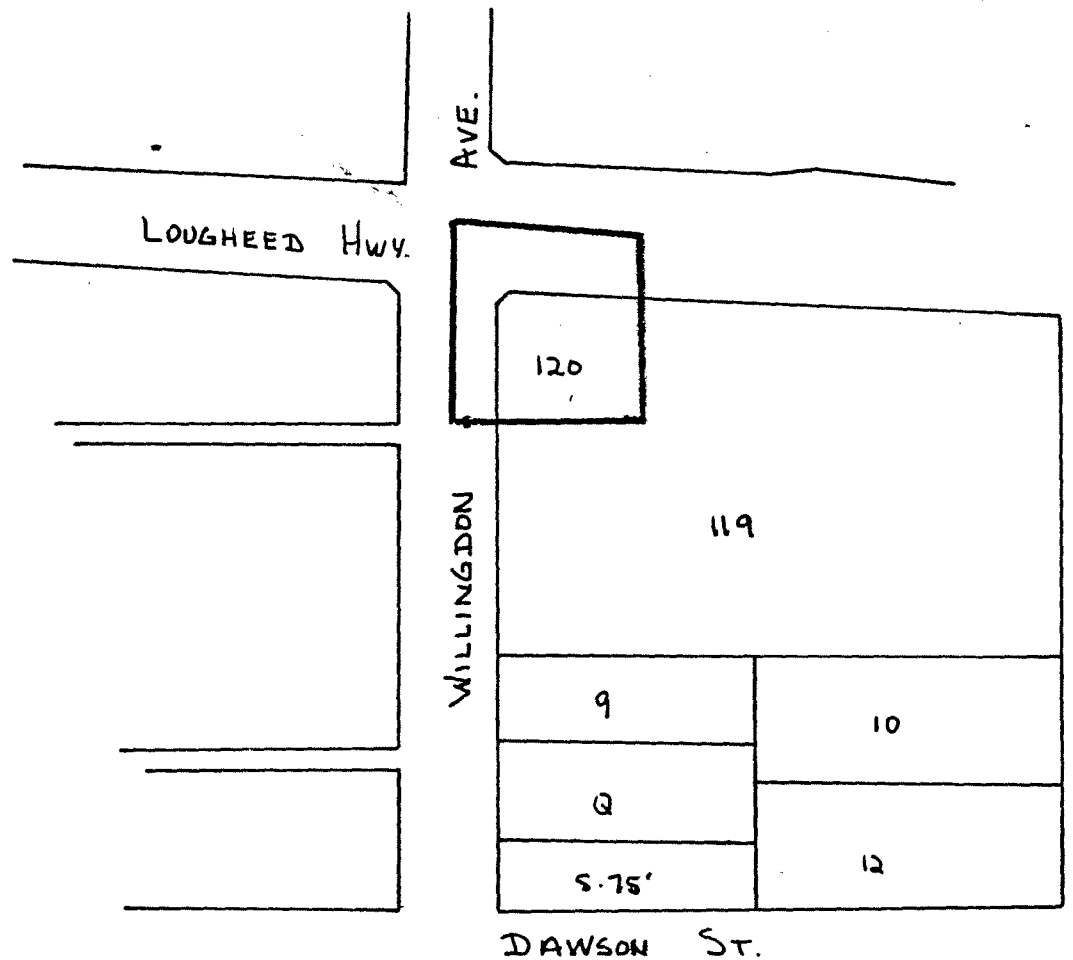
OFFICIAL ZONING MAP

NO RZ 472

BY-LAW NO. 6212 BEING A BY-LAW TO AMEND BY-LAW NO. 4742 BEING THE BURNABY ZONING BY-LAW, 1965

PROPERTY REZONED TO Service Commercial District (C4)

Legal: Lot 120, D.L. 124, Plan 32911



THE AREA(S) SHOWN ABOVE OUTLINED IN BLACK (—) IS (ARE) REZONED:

From: Gasoline Service Station District (C6)
To: Service Commercial District (C4)

PLANNING DEPARTMENT	
SCALE	1:200
DRAWN	JH
DATE	JAN, 73.

CORPORATION OF THE DISTRICT OF BURNABY

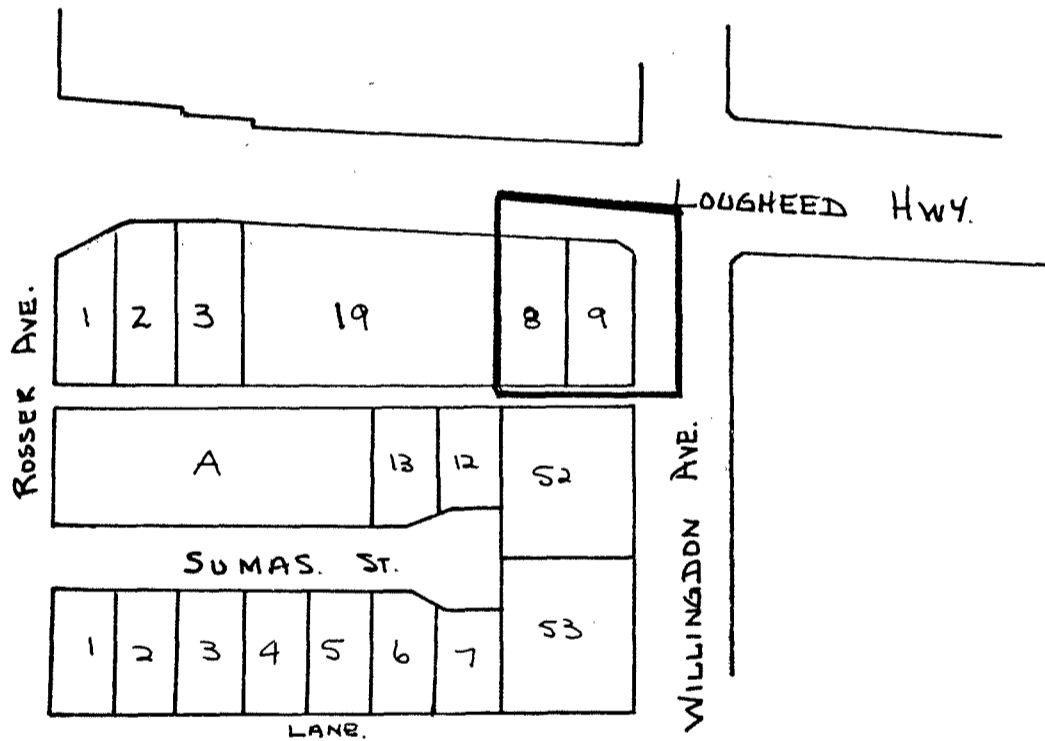
OFFICIAL ZONING MAP

NO RZ 473

BY-LAW NO. 6212 BEING A BY-LAW TO AMEND BY-LAW NO. 4742 BEING THE BURNABY ZONING BY-LAW, 1965

PROPERTY REZONED TO Service Commercial District (C4)

Legal-Lots 8 and 9, Blk. 6, exc. Expl. Pl. 30951, D.L. 119, Plan 2855



THE AREA(S) SHOWN ABOVE OUTLINED IN BLACK (—) IS (ARE) REZONED:

From: Gasoline Service Station District (C6)

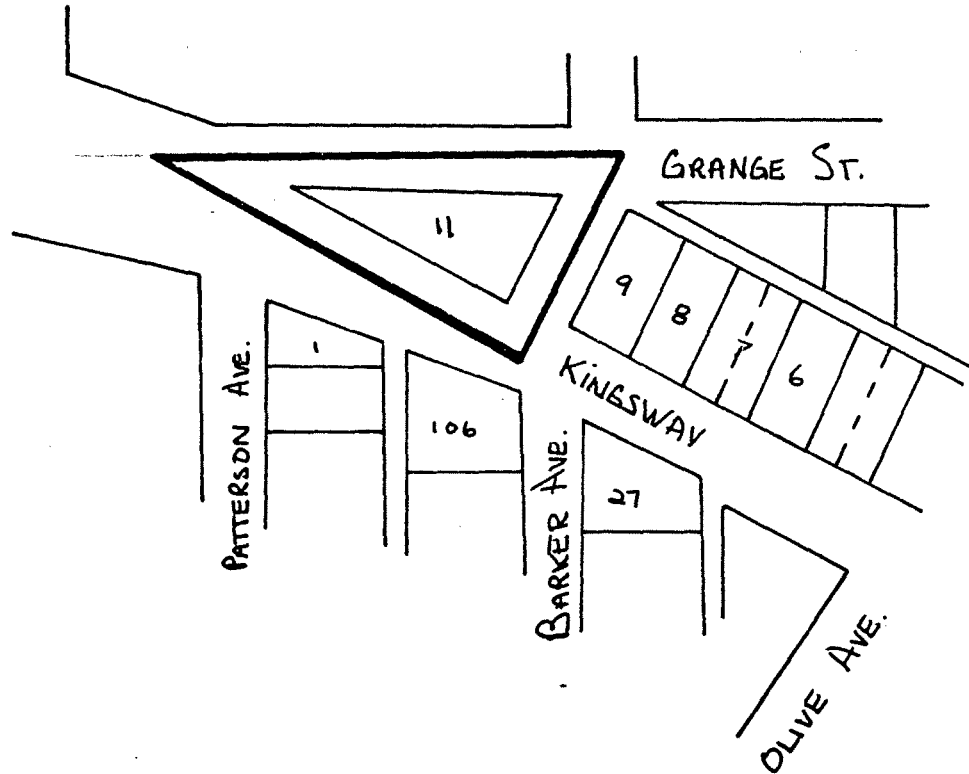
To: Service Commercial District (C4)

PLANNING DEPARTMENT		CORPORATION OF THE DISTRICT OF BURNABY	
SCALE	1:200	OFFICIAL ZONING MAP	
DRAWN	JH		
DATE	JAN 13.		
		NO RZ 474	

BY-LAW NO. 6212 BEING A BY-LAW TO AMEND BY-LAW NO. 4742 BEING THE BURNABY ZONING BY-LAW, 1965

PROPERTY REZONED TO Service Commercial District

Legal: Lot 11, Plan 1662, D.L. 151, Plan 1316



THE AREA(S) SHOWN ABOVE OUTLINED IN BLACK (—) IS (ARE) REZONED:

From: Gasoline Service Station District (C6)

To: Service Commercial District (C4)

PLANNING DEPARTMENT	
SCALE	1:200
DRAWN	JH
DATE	JAN. 13.

CORPORATION OF THE DISTRICT OF BURNABY

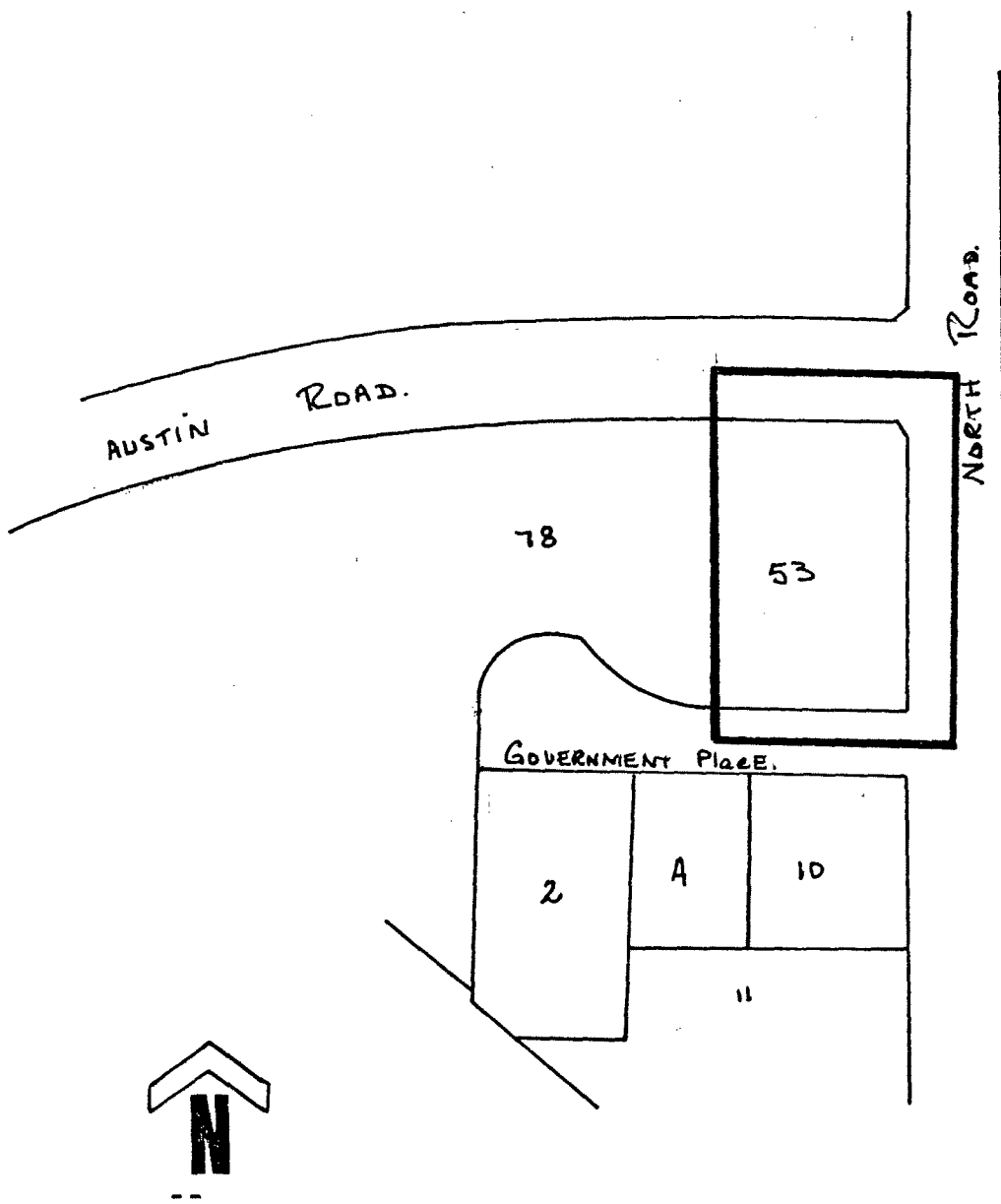
OFFICIAL ZONING MAP

NO RZ 475

BY-LAW NO. 6212 BEING A BY-LAW TO AMEND BY-LAW
 NO. 4742 BEING THE BURNABY ZONING BY-LAW, 1965

PROPERTY REZONED TO Service Commercial District (C4)

Legal: Lot Rem. 53, D.L. 4, Plan 31308



THE AREA(S) SHOWN ABOVE OUTLINED
 IN BLACK (—) IS (ARE) REZONED:

From: Gasoline Service Station District (C6)

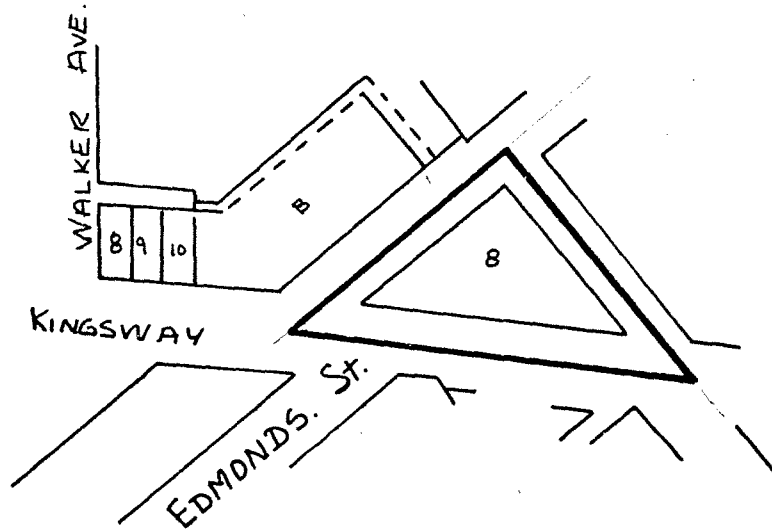
To: Service Commercial District (C4)

PLANNING DEPARTMENT		CORPORATION OF THE DISTRICT OF BURNABY	
SCALE	1:200	OFFICIAL ZONING MAP	
DRAWN	JH		
DATE	JAN. 73		
		NO RZ 476	

BY-LAW NO. 6212 BEING A BY-LAW TO AMEND BY-LAW
 NO. 4742 BEING THE BURNABY ZONING BY-LAW, 1965

PROPERTY REZONED TO Service Commercial District (C4)

Legal: Lot 8, Sk. 929, D.L. 95N., Plan 556



THE AREA(S) SHOWN ABOVE OUTLINED
 IN BLACK (—) IS (ARE) REZONED:

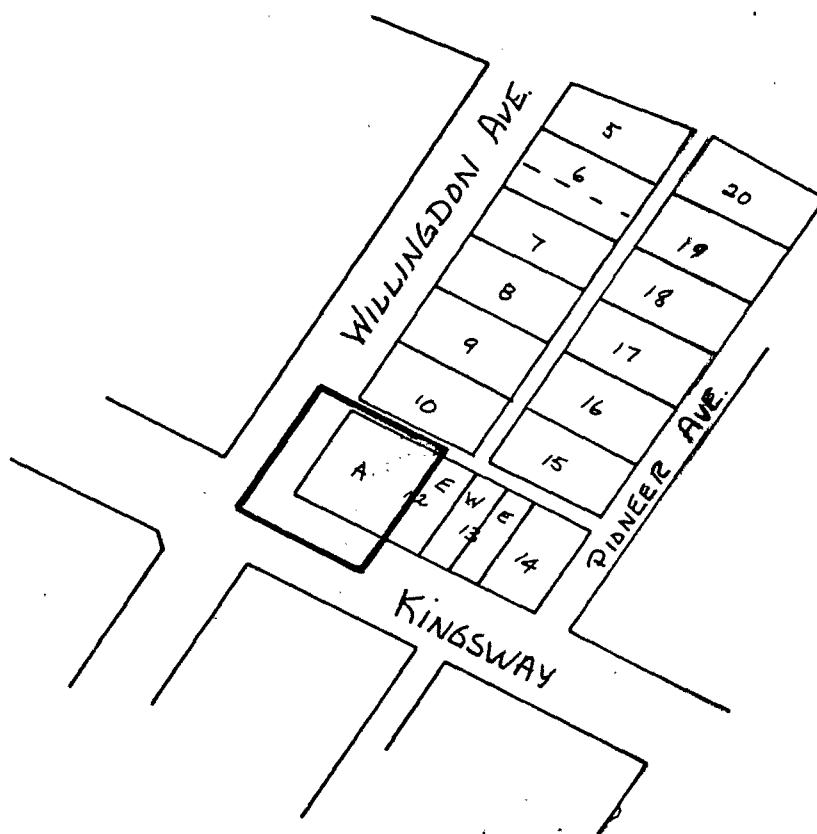
From: Gasoline Service Station District (C6)
 To: Service Commercial District (C4)

PLANNING DEPARTMENT		CORPORATION OF THE DISTRICT OF BURNABY	
SCALE	1:200	OFFICIAL ZONING MAP	
DRAWN	JH		
DATE	JAN. 73.		
		NO RZ 477	

BY-LAW NO. 6212 BEING A BY-LAW TO AMEND BY-LAW NO. 4742 BEING THE BURNABY ZONING BY-LAW, 1965

PROPERTY REZONED TO Service Commercial District (C4)

Legal: Pcl. A; Ref. Pl. 17013, Blks. 11 and 12, D.L. 153/33



THE AREA(S) SHOWN ABOVE OUTLINED IN BLACK (—) IS (ARE) REZONED:

From: Gasoline Service Station District (C6)
To: Service Commercial District (C4)

PLANNING DEPARTMENT	
SCALE	1:200
DRAWN	JH
DATE	JAN. 73.

CORPORATION OF THE DISTRICT OF BURNABY

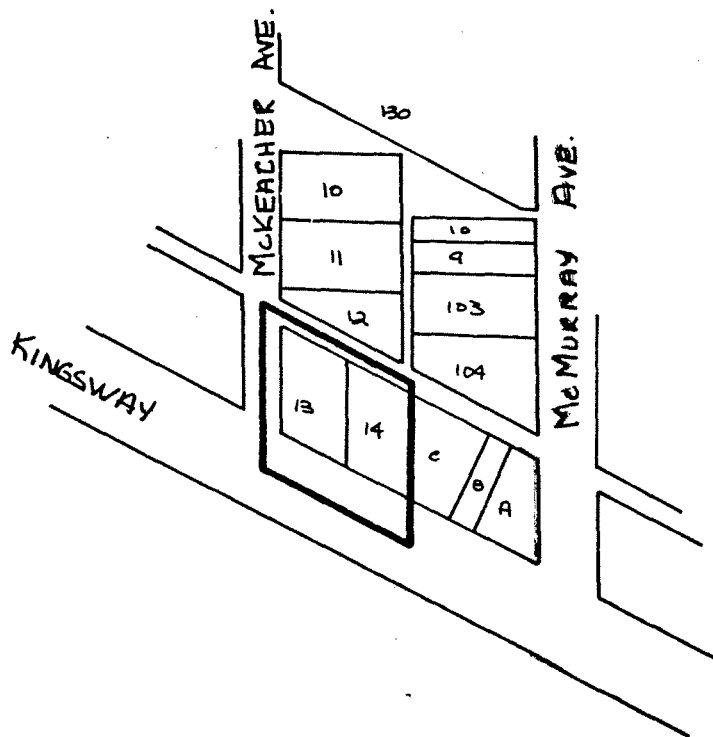
OFFICIAL ZONING MAP

NO RZ 478

BY-LAW NO. 6212 BEING A BY-LAW TO AMEND BY-LAW NO. 4742 BEING THE BURNABY ZONING BY-LAW, 1965

PROPERTY REZONED TO Service Commercial District (C4)

Legal: Lots 13 and 14, Block 9, D. L. 32



THE AREA(S) SHOWN ABOVE OUTLINED IN BLACK (—) IS (ARE) REZONED:

From: Gasoline Service Station District (C6)
To: Service Commercial District (C4)

PLANNING DEPARTMENT	
SCALE	1:200
DRAWN	JH
DATE	JAN. 73.

CORPORATION OF THE DISTRICT OF BURNABY

OFFICIAL ZONING MAP

NO RZ 479