

THE CORPORATION OF THE DISTRICT OF BURNABY

BY-LAW NO. 6203

A BY-LAW to amend By-Law No. 4742, being  
"Burnaby Zoning By-Law 1965".

WHEREAS application for rezoning has been made to the  
Council.

AND WHEREAS the Council has held a public hearing thereon  
after duly giving notice of the time and place of such hearing.

NOW THEREFORE the Council of The Corporation of the  
District of Burnaby ENACTS as follows:

1. This By-Law may be cited as "BURNABY ZONING BY-LAW 1965,  
AMENDMENT BY-LAW NO. 67, 1972".

2. The Map (hereinafter called "Map "A",) attached to and  
forming an integral part of By-Law No. 4742, being "Burnaby Zoning By-  
Law 1965," and designated as the Official Zoning Map of The Corporation  
of the District of Burnaby, is hereby amended according to the Map  
(hereinafter called "Map "B'"), marginally numbered R.Z. 490, annexed  
to this By-law, and in accordance with the explanatory legend, notations,  
references and boundaries designated, described, delimited and specified  
in particularity shown upon said Map "B"; and the various boundaries  
and districts shown upon said Map "B" respectively are an amendment of  
and in substitution for the respective districts, designated and marked  
on said Map "A" insofar as the same are changed, modified or varied  
thereby, and the said Map "A" shall be deemed to be and is hereby  
declared to be amended accordingly and the said Map "B" is hereby  
declared to be and shall form an integral part of said Map "A", as if  
originally incorporated therein and shall be interpreted accordingly.

3. The Comprehensive Development Plan entitled "Greentree Village  
Phase I," prepared by Michael Katz - Architects, and marked CEF 1-6 in-  
clusive, HEF 1-11 inclusive, D1-D16 inclusive and FL 1-27 inclusive, to-  
gether with Landscape Plans L1-8 inclusive & Specifications prepared by

Don Vaughan & Associates Ltd., deposited with and signed by the Municipal Clerk, is deemed to be attached to and form part of this by-law.

Read a first time this 4th day of December, 1973.

Read a second time this 4th day of December, 1973.

Read a third time this 5th day of February, 1973.

Reconsidered and adopted by an affirmative vote of at least two-thirds of all the members of the Council this 19th day of March, 1973.



M A Y O R



DEPUTY C L E R K



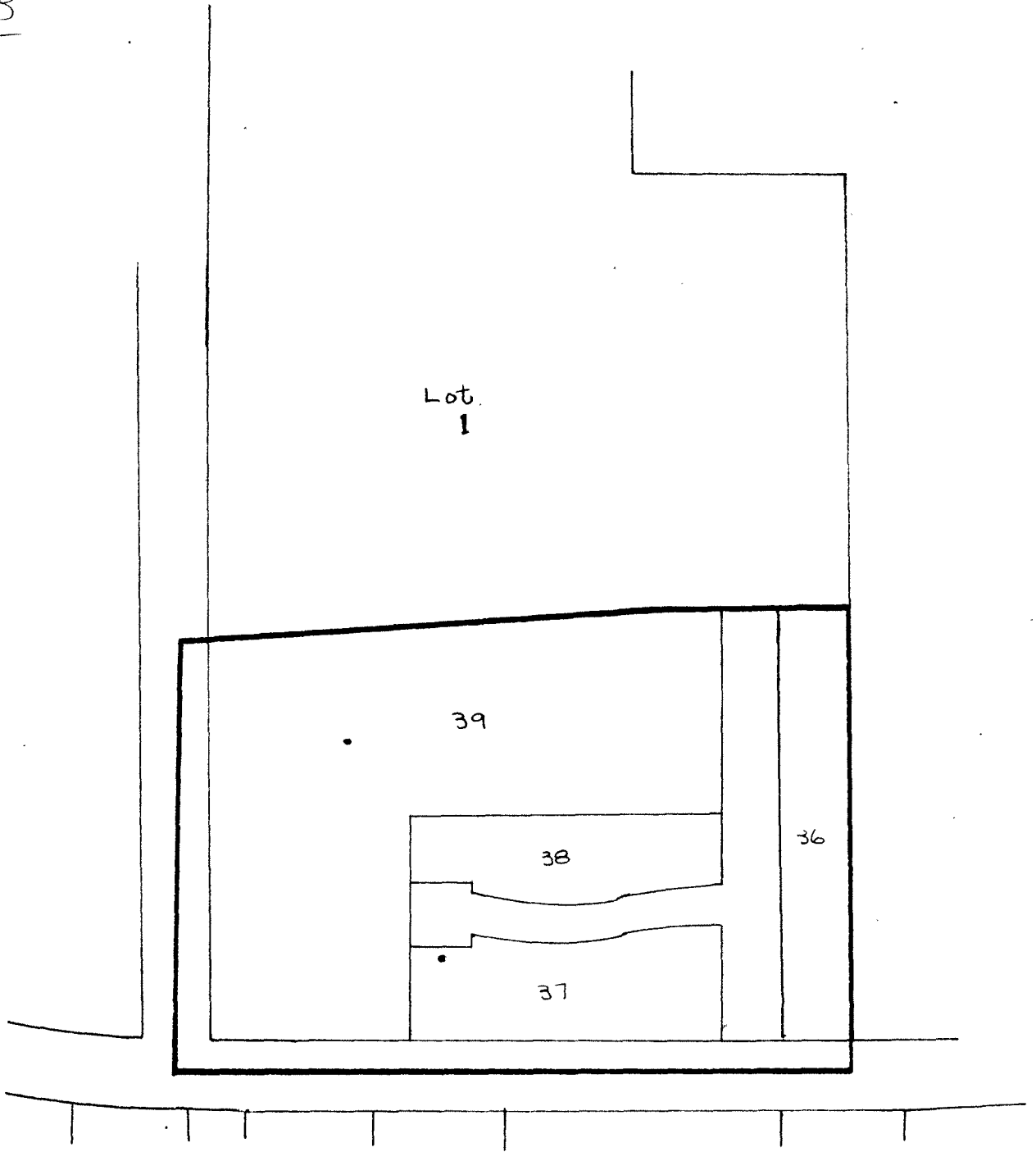
BY-LAW NO. 6293 BEING A BY-LAW TO AMEND BY-LAW  
 NO. 4742 BEING THE BURNABY ZONING BY-LAW, 1965

PROPERTY REZONED TO Comprehensive Development District (CD)

Old Legal: A 2.86 acre ptn. of Lot 1, D.L. 75/01, Plan A0543

New Legal: Lots 36, 37, 38 and 39, D.L. 81, Plan A3519

MAP "B"



THE AREA(S) SHOWN ABOVE OUTLINED  
 IN BLACK (—) IS (ARE) REZONED:

From: Cemetery District (P)  
 To: Comprehensive Development District (CD)

PLANNING DEPARTMENT	
SCALE	1:200
DRAWN	JH ✓
DATE	March, 1973

CORPORATION OF THE DISTRICT OF BURNABY

OFFICIAL ZONING MAP

NO RZ 490