

THE CORPORATION OF THE DISTRICT OF BURNABY

BY-LAW NO. 6098

A BY-LAW to amend By-Law No. 4742, being
"Burnaby Zoning By-Law 1965"

WHEREAS application for rezoning has/have been made to the Council.

AND WHEREAS the Council has held a public hearing thereon after
duly giving notice of the time and place of such hearing.

NOW THEREFORE the Council of The Corporation of the District of
Burnaby ENACTS as follows:

1. This By-Law may be cited as "BURNABY ZONING BY-LAW 1965, AMENDMENT
BY-LAW NO. 31, 19 72".
2. The Map (hereinafter called "Map "A'") attached to and forming an
integral part of By-Law No. 4742, being "Burnaby Zoning By-Law 1965", and
designated as the Official Zoning Map of The Corporation of the District of
Burnaby, is hereby amended according to the Map (hereinafter called "Map "B'"),
marginally numbered R.Z. 442 , annexed to this By-Law, and in accordance with
the explanatory legend, notations, references and boundaries designated, des-
cribed, delimited and specified in particularity shown upon said Map "B"; and
the various boundaries and districts shown upon said Map "B" respectively are
an amendment of and in substitution for the respective districts, designated
and marked on said Map "A" insofar as the same are changed, modified or varied
thereby, and the said Map "A" shall be deemed to be and is hereby declared to
be amended accordingly and the said Map "B" is hereby declared to be and shall
form an integral part of said Map "A", as if originally incorporated therein,
and shall be interpreted accordingly.

Read a first time this 24th day of April, 19 72.

Read a second time this 24th day of April, 19 72.

Read a third time this 14th day of August, 19 72.

Reconsidered and adopted by an affirmative vote of at least two-
thirds of all the members of the Council this 25th day of September, 19 72.

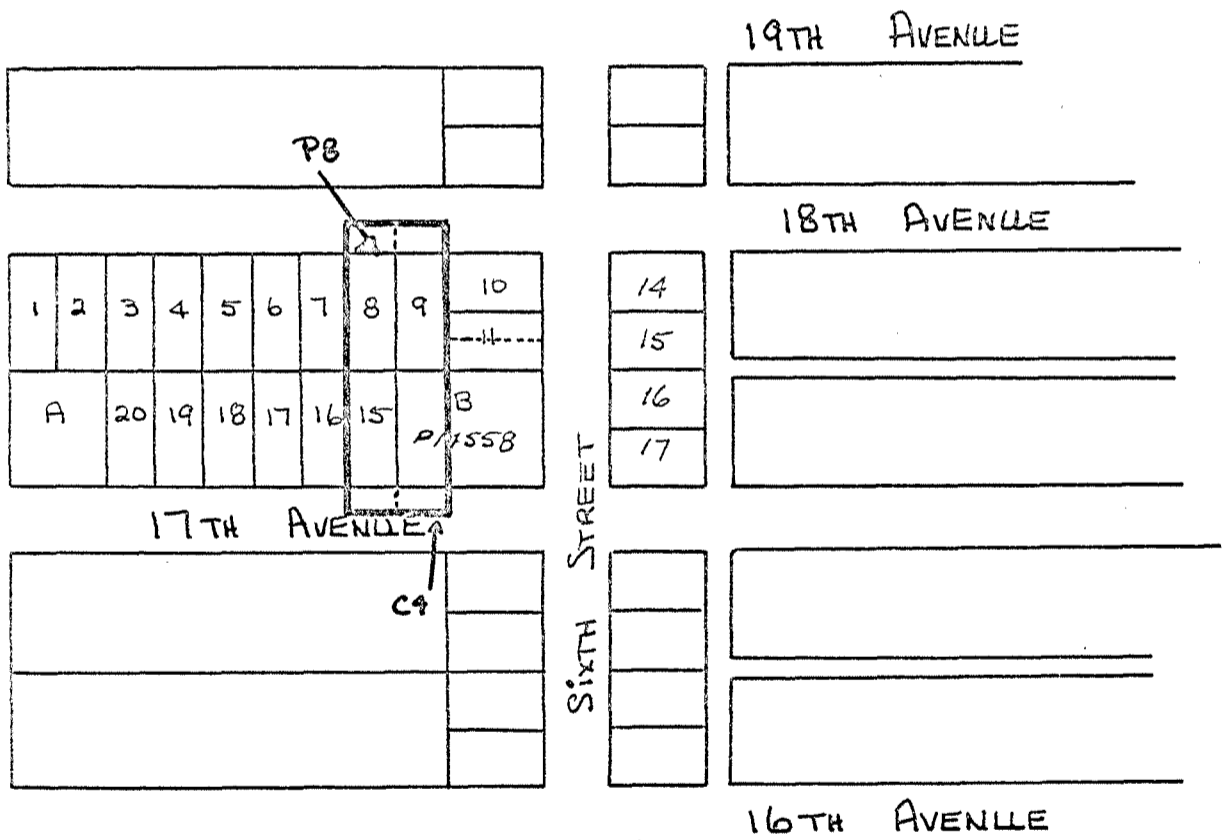


J. D. Drummond
MAYOR
J. Shaw
CLERK

BY-LAW NO. 6098 BEING A BY-LAW TO AMEND BY-LAW NO. 4742 BEING THE BURNABY ZONING BY-LAW, 1965

PROPERTY REZONED TO a) Service Commercial District (C4)
 b) Parking District (P8)
MAP "B"

- Old Legal: a) Lot 9, Blk. 5, D.L. 28C, Plan 627
 West 50 feet of Lot "B", Blk. 5, D.L. 28C, Plan 14558
 b) Lots 8 and 15, Blk. 5, D.L. 28C, Plan 627
 New Legal: a) Lot 67, Blk. 5, D.L. 28C, Plan 42361
 b) South 35' of Lot 11, Blk. 5, D.L. 28C, Plan 627



THE AREA(S) SHOWN ABOVE OUTLINED

IN BLACK (—) IS (ARE) REZONED:

- FROM: Residential District (R5)
 TO: a) Service Commercial District (C4)
 b) Parking District (P8)