

THE CORPORATION OF THE DISTRICT OF BURNABY

BY-LAW NO. 6045

A BY-LAW to amend By-Law No. 4742, being
"Burnaby Zoning By-Law 1965".

WHEREAS application for rezoning has/have been made to the Council.

AND WHEREAS the Council has held a public hearing thereon after duly giving notice of the time and place of such hearing.

NOW THEREFORE the Council of The Corporation of the District of Burnaby ENACTS as follows:

1. This By-law may be cited as "BURNABY ZONING BY-LAW 1965, AMENDMENT BY-LAW NO. 15,1972".
2. The Map (hereinafter called "Map "A"") attached to and forming an integral part of By-Law No. 4742, being "Burnaby Zoning By-Law 1965", and designated as the Official Zoning Map of The Corporation of the District of Burnaby, is hereby amended according to the Maps (hereinafter called "Maps "B""), marginally numbered R.Z. 440 and 441, annexed to this By-Law, and in accordance with the explanatory legend, notations, references and boundaries designated, described, delimited and specified in particularity shown upon said Maps "B"; and the various boundaries and districts shown upon said Maps "B" respectively are an amendment of and in substitution for the respective districts, designated and marked on said Map "A" insofar as the same are changed, modified or varied thereby, and the said Map "A" shall be deemed to be and is hereby declared to be amended accordingly and the said Maps "B" ^{are} ~~is~~ hereby declared to be and shall form an integral part of said Map "A", as if originally incorporated therein, and shall be interpreted accordingly.

Read a first time this 24th day of January, 1972.

Read a second time this 24th day of January, 1972.

Read a third time this 27th day of March, 1972.

Reconsidered and adopted by an affirmative vote of at least two-thirds of all the members of the Council this 24th day of April, 1972.



Robert W. Ruthe
MAYOR
James Hudson
CLERK

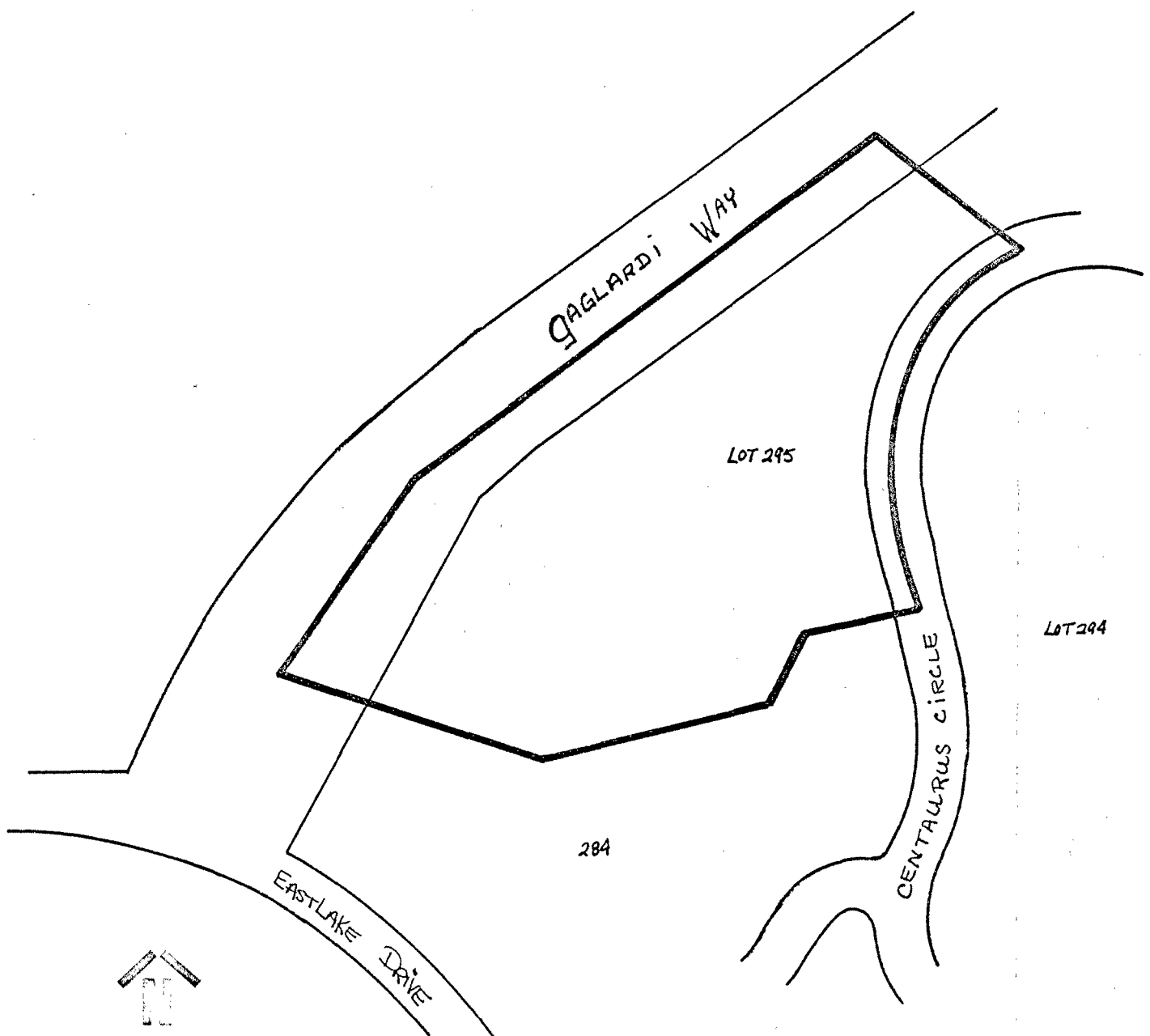
BY-LAW NO. 6045 BEING A BY-LAW TO AMEND BY-LAW
 NO. 4742 BEING THE BURNABY ZONING BY-LAW, 1965

PROPERTY REZONED TO Comprehensive Development District (CD)

Old Legal: 6.28 and 7.56 acre parcels of Lot 67, D.L.'s 6 and 56,
 Plan 38574

New Legal: 6.28 and 7.56 acre parcels of Lot 67, D.L.'s 6 and 56,
 Plan 41353

MAP "B"



THE AREA(S) SHOWN ABOVE OUTLINED

IN BLACK (—) IS (ARE) REZONED:

FROM: Heavy Industrial District (M3)
 & Residential District Two (R2)

TO: Comprehensive Development District (CD)

PLANNING DEPARTMENT		CORPORATION OF THE DISTRICT OF BURNABY	
SCALE	1:200	OFFICIAL ZONING MAP	
DRAWN	SM		
DATE	02/12		
		NO RZ 440	

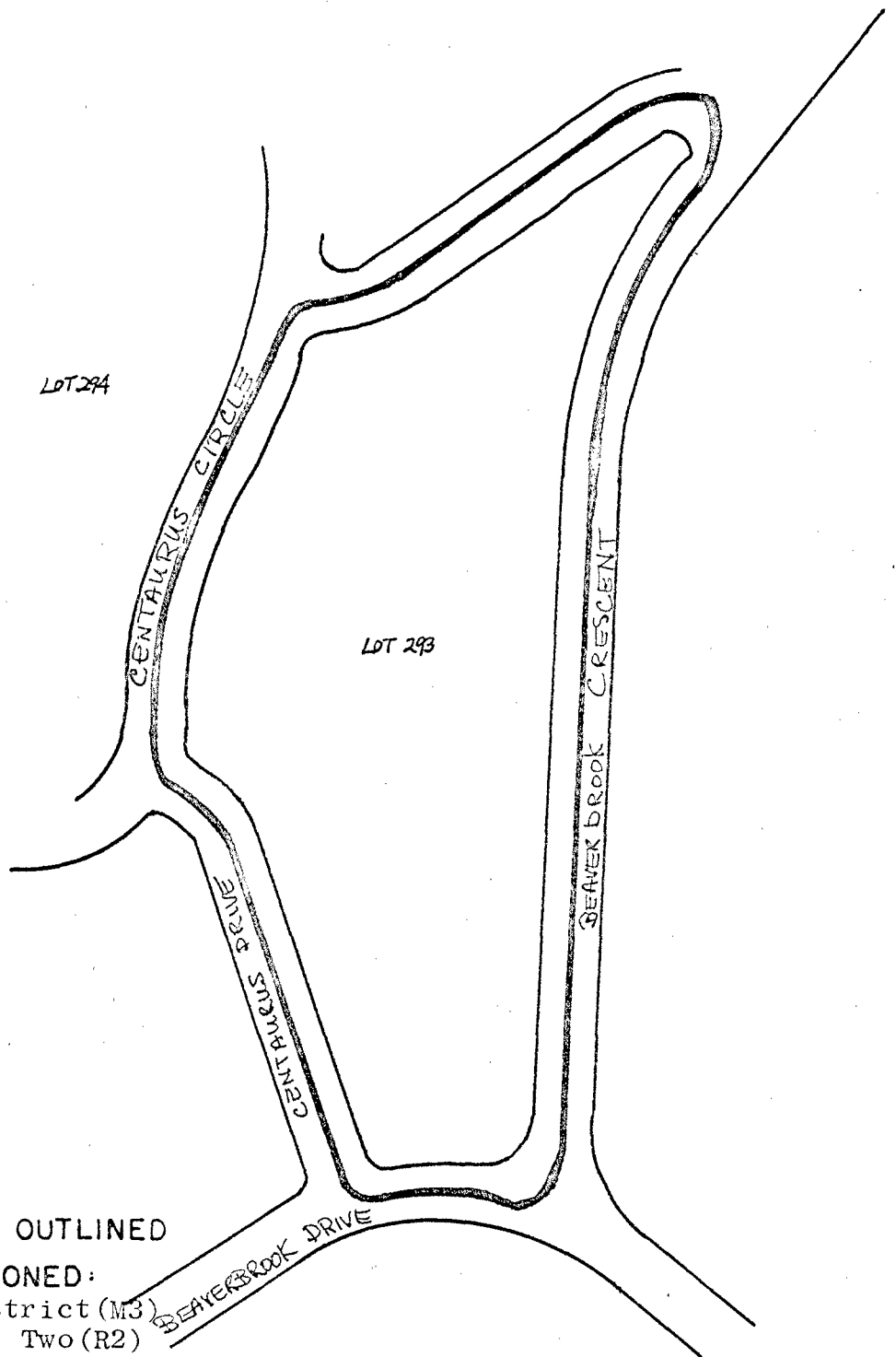
BY-LAW NO. 6045 BEING A BY-LAW TO AMEND BY-LAW
 NO. 4742 BEING THE BURNABY ZONING BY-LAW, 1965

PROPERTY REZONED TO Comprehensive Development District (CD)

Old Legal: 6.28 and 7.56 acre parcels of Lot 67, D.L.'s 6 and 56,
 Plan 38574

New Legal: 6.28 and 7.56 acre parcels of Lot 67, D.L.'s 6 and 56,
 Plan 41353

MAP "B"



THE AREA(S) SHOWN ABOVE OUTLINED

IN BLACK (—) IS (ARE) REZONED:

FROM: Heavy Industrial District (M3)
 & Residential District Two (R2)

TO: Comprehensive Development District (CD)

PLANNING
 DEPARTMENT

CORPORATION OF THE DISTRICT OF BURNABY

SCALE 1:200

OFFICIAL ZONING MAP

DRAWN GJA

DATE FEB 72

NO RZ 441