

THE CORPORATION OF THE DISTRICT OF BURNABY

BY-LAW NO. 5954

A BY-LAW to amend By-Law No. 4742, being
"Burnaby Zoning By-Law 1965"

WHEREAS applications for rezoning ~~has~~/have been made to the Council.

AND WHEREAS the Council has held a public hearing thereon after
duly giving notice of the time and place of such hearing.

NOW THEREFORE the Council of The Corporation of the District of
Burnaby ENACTS as follows:

1. This By-Law may be cited as "BURNABY ZONING BY-LAW 1965, AMENDMENT
BY-LAW NO. 46, 19 71".

2. The Map (hereinafter called "Map "A'") attached to and forming an
integral part of By-Law No. 4742, being "Burnaby Zoning By-Law 1965", and
designated as the Official Zoning Map of The Corporation of the District of
Burnaby, is hereby amended according to the Map (hereinafter called "Map "B'"),
marginally numbered R.Z. 383 to 386 incl., annexed to this By-Law, and in accordance with
the explanatory legend, notations, references and boundaries designated, des-
cribed, delimited and specified in particularity shown upon said Maps "B"; and
the various boundaries and districts shown upon said Maps "B" respectively are
an amendment of and in substitution for the respective districts, designated
and marked on said Map "A" insofar as the same are changed, modified or varied
thereby, and the said Map "A" shall be deemed to be and is hereby declared to
be amended accordingly and the said Maps "B" ~~is~~ ^{are} hereby declared to be and shall
form an integral part of said Map "A", as if originally incorporated therein,
and shall be interpreted accordingly.

Read a first time this 27th day of September, 19 71

Read a second time this 27th day of September, 19 71.

Read a third time this 27th day of September, 1971.

Reconsidered and adopted by an affirmative vote of at least two-
thirds of all the members of the Council this 4th day of October, 19 71.



Robert W. Pottle
MAYOR

J. Shaw
CLERK

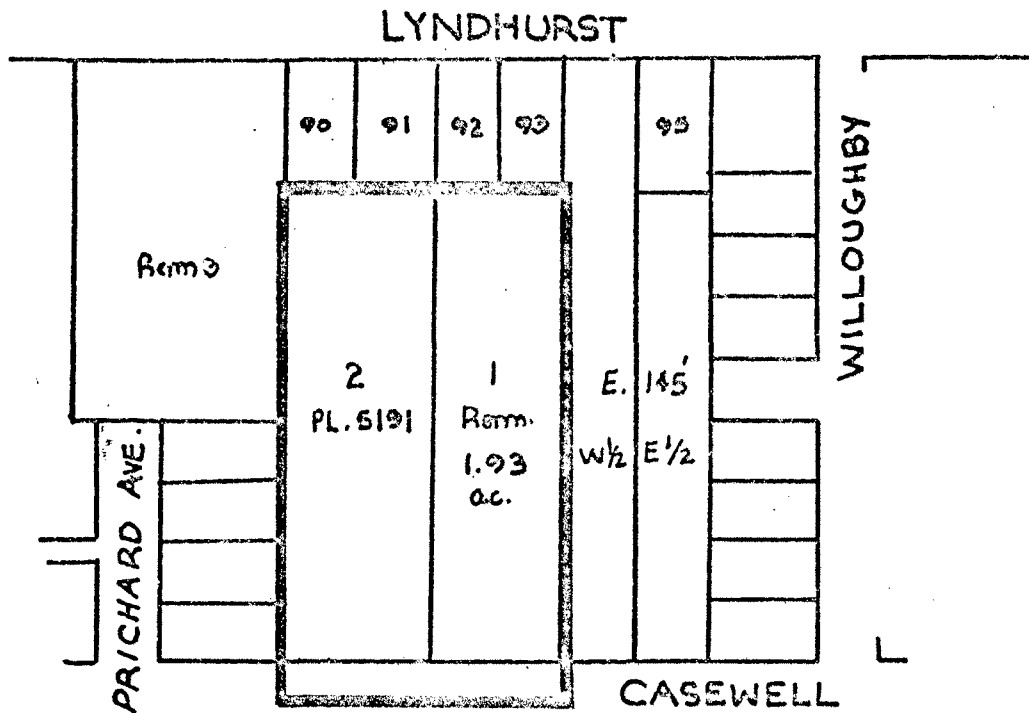
BY-LAW NO. 5954 BEING A BY-LAW TO AMEND BY-LAW NO. 4742 BEING THE BURNABY ZONING BY-LAW, 1965

PROPERTY REZONED TO Park and Public Use District (P3)

MAP "B"

Legal:

- 1) Lot 1, exc. North 140 feet and east 145 feet, Block "A", D.L. 8, Plan 5191
- 2) Lot 2, exc. North 140 feet, Block "A", D.L. 8, Plan 5191.



THE AREA(S) SHOWN ABOVE OUTLINED
 IN BLACK (ARE) IS (ARE) REZONED:
 FROM: Residential District Two (R2)
 TO: Park & Public Use District (P3)



PLANNING DEPARTMENT	
SCALE	1:200
UNWATER	GP
DATE: 1 SEP 1965	

CORPORATION OF THE DISTRICT OF BURNABY

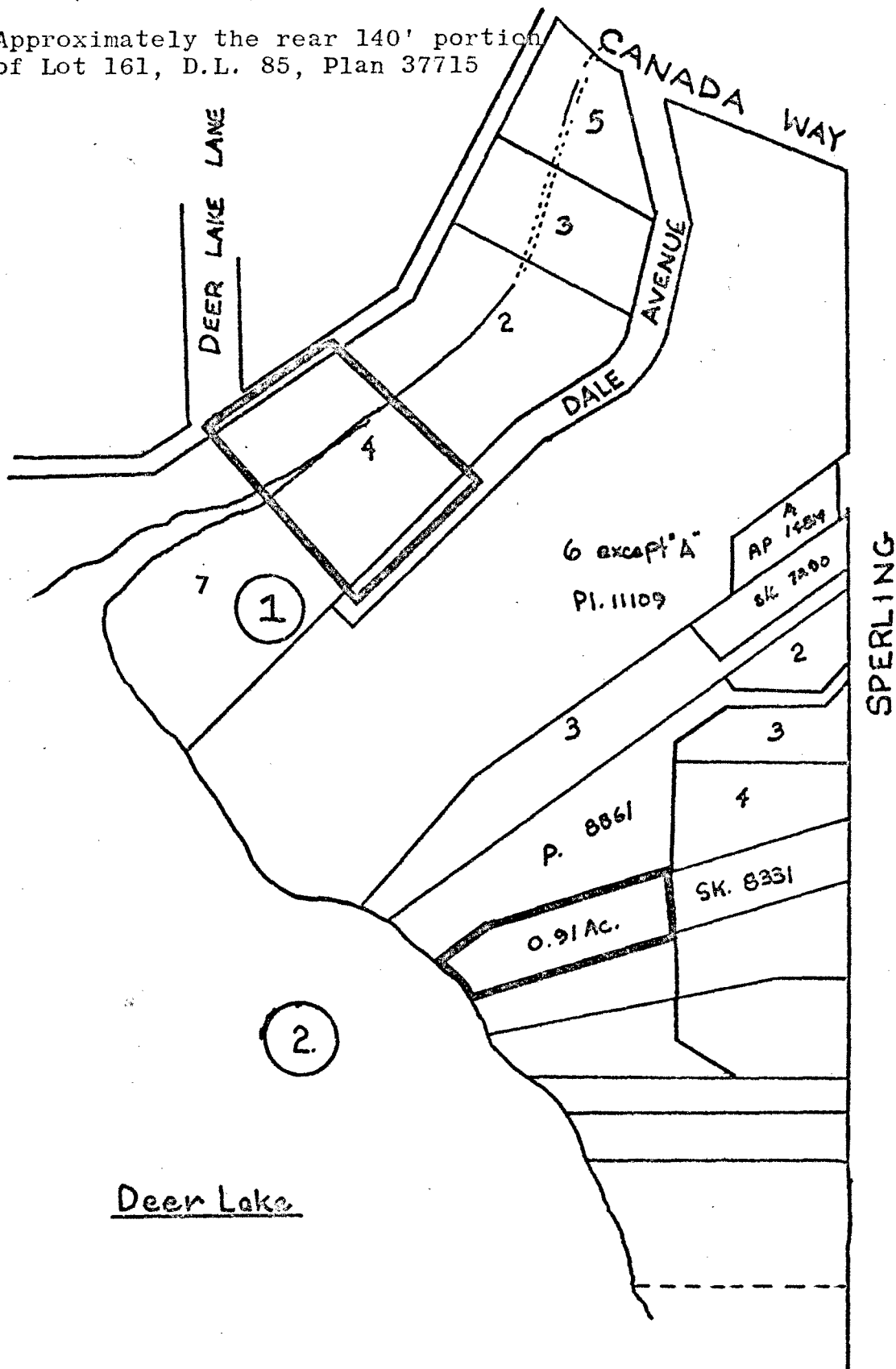
OFFICIAL ZONING MAP

BY-LAW NO. 5954 BEING A BY-LAW TO AMEND BY-LAW NO. 4742 BEING THE BURNABY ZONING BY-LAW, 1965

MAP B

PROPERTY REZONED TO Park and Public Use District (P3)

- Legal: 1) Lot 4, Block "R", D.L.'s 85/79, Plan 11109
 2) Approximately the rear 140' portion of Lot 161, D.L. 85, Plan 37715



THE AREA(S) SHOWN ABOVE OUTLINED IN BLACK (====) IS (ARE) REZONED:

FROM: Residential District One (R1)
 TO: Park & Public Use District (P3)



PLANNING DEPARTMENT	
SCALE	1:200
DRAWN	CRP
DATE	SEPT 1971

CORPORATION OF THE DISTRICT OF BURNABY

OFFICIAL ZONING MAP

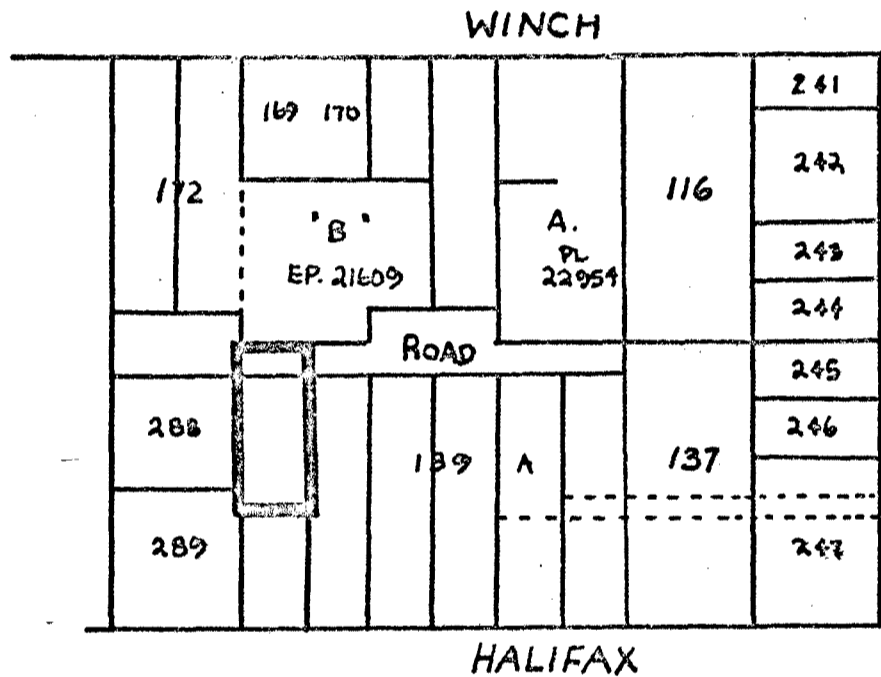
NO RZ 384

BY-LAW NO. 5954 BEING A BY-LAW TO AMEND BY-LAW NO. 4742 BEING THE BURNABY ZONING BY-LAW, 1965.

MAP "B"

PROPERTY REZONED TO Park & Public Use District (P3)

Legal: Lot 279, D.L. 129, Plan 38267



THE AREA(S) SHOWN ABOVE OUTLINED
 IN BLACK (←) IS (ARE) REZONED:
 FROM: Residential District Four (R4)
 TO: Park & Public Use District (P3)



PLANNING DEPARTMENT	
SCALE	1:200
DRAWN	GP
DATE	SEPTEMBER

CORPORATION OF THE DISTRICT OF BURNABY

OFFICIAL ZONING MAP

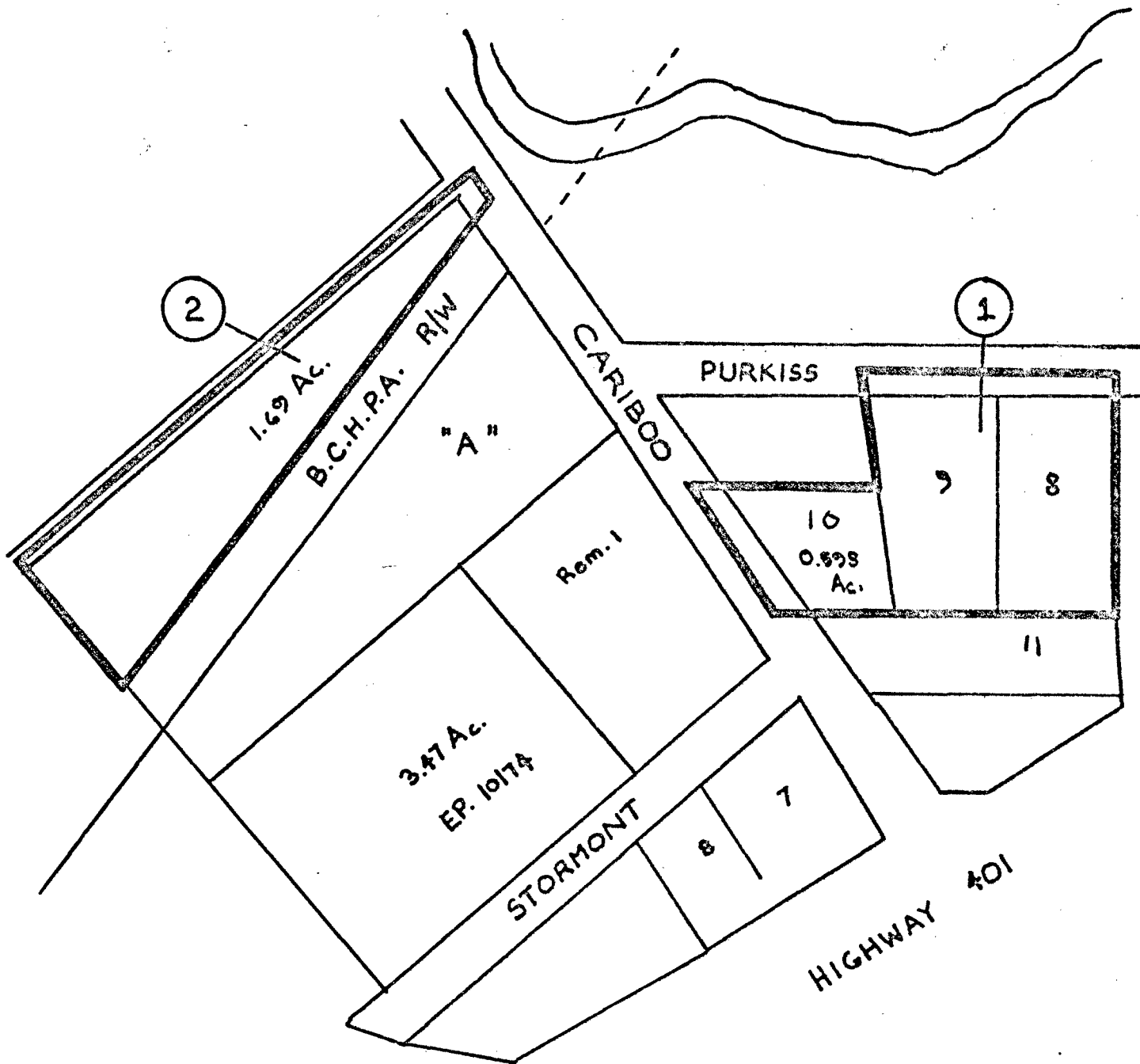
NO RZ 335

BY-LAW NO. 5954 BEING A BY-LAW TO AMEND BY-LAW NO. 4742 BEING THE BURNABY ZONING BY-LAW, 1965

MAP 'B'

PROPERTY REZONED TO Park & Public Use District (P3)

- Legal: 1) a) Lots 8 & 9, Block 1, D.L. 14, Plan 3047
 b) Lot 10, exc. Expl. Pl. 9817, Block 1, D.L. 14, Plan 3047
 2) Lot 2 exc. Parcel "A", Ref. Plan 12540, Block 3, D.L. 14, Plan 3047



THE AREA(S) SHOWN ABOVE OUTLINED IN BLACK (—) IS (ARE) REZONED:
 FROM: Small Holdings District (A2)
 TO: Park & Public Use District (P3)



PLANNING DEPARTMENT	
SCALE	1:200
DRAWN	G.P.
DATE	SEPT 20 1965

CORPORATION OF THE DISTRICT OF BURNABY
 OFFICIAL ZONING MAP

NO RZ 386