

THE CORPORATION OF THE DISTRICT OF BURNABY

BY-LAW NO. 5947

A BY-LAW to amend By-Law No. 4742, being  
"Burnaby Zoning By-Law 1965"

WHEREAS application for rezoning has/~~been~~ been made to the Council.

AND WHEREAS the Council has held a public hearing thereon after  
duly giving notice of the time and place of such hearing.

NOW THEREFORE the Council of The Corporation of the District of  
Burnaby ENACTS as follows:

1. This By-Law may be cited as "BURNABY ZONING BY-LAW 1965, AMENDMENT  
BY-LAW NO. 45, 1971".

2. The Map (hereinafter called "Map "A'") attached to and forming an  
integral part of By-Law No. 4742, being "Burnaby Zoning By-Law 1965", and  
designated as the Official Zoning Map of The Corporation of the District of  
Burnaby, is hereby amended according to the Maps (hereinafter called "Maps "B'"),  
marginally numbered R.Z. 393 to 398 incl., annexed to this By-Law, and in accordance with  
the explanatory legend, notations, references and boundaries designated, des-  
cribed, delimited and specified in particularity shown upon said Maps "B"; and  
the various boundaries and districts shown upon said Maps "B" respectively are  
an amendment of and in substitution for the respective districts, designated  
and marked on said Map "A" insofar as the same are changed, modified or varied  
thereby, and the said Map "A" shall be deemed to be and is hereby declared to  
be amended accordingly and the said Maps "B" ~~is~~ <sup>are</sup> hereby declared to be and shall  
form an integral part of said Map "A", as if originally incorporated therein,  
and shall be interpreted accordingly.

Read a first time this 23rd day of August, 19 71.

Read a second time this 23rd day of August, 19 71.

Read a third time this 23rd day of August, 19 71 .

Reconsidered and adopted by an affirmative vote of at least two-  
thirds of all the members of the Council this 20th day of September, 19 71.



*Robert H. Rutledge*  
MAYOR

*J. Shaw*  
CLERK

BY-LAW NO. 5947 BEING A BY-LAW TO AMEND BY-LAW  
 NO. 4742 BEING THE BURNABY ZONING BY-LAW, 1965

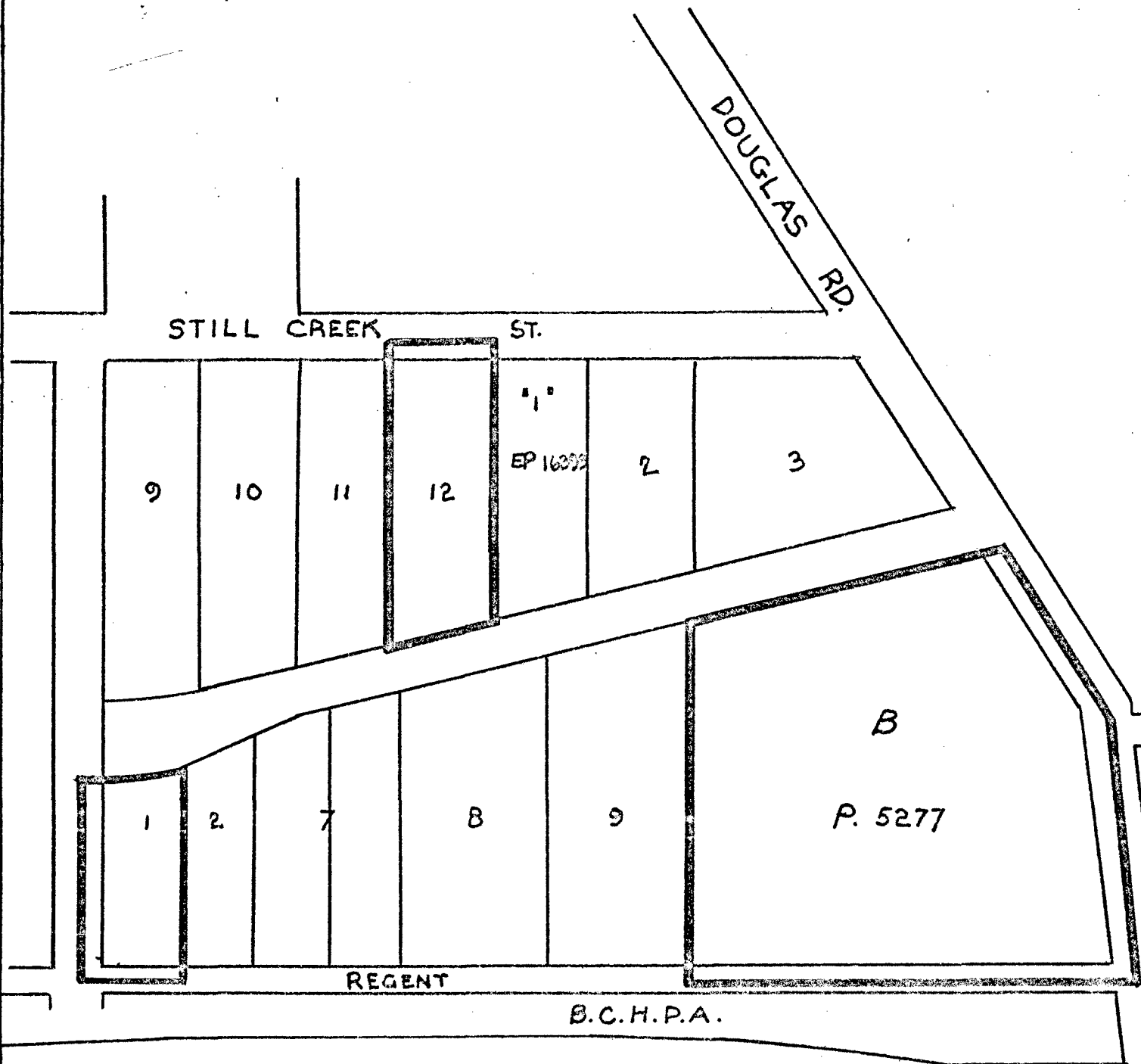
MAP "B"

PROPERTY REZONED TO Truck Terminal District M6

Legals: Lot 1, Blk. 6, D.L. 74 N 1/2, Plan 3970

Lot "B", except Part on Sketch 8024, D.L. 74 N 1/2, Plan 5277

Lot 12, D.L. 74 N. Part, Plan 3782



THE AREA(S) SHOWN ABOVE OUTLINED

IN BLACK (SOLID) IS (ARE) REZONED:

FROM: General Industrial District M2  
 TO: Truck Terminal District M6



PLANNING DEPARTMENT	
SCALE	1:300
DRAWN	G2
DATE	SEP 11

CORPORATION OF THE DISTRICT OF BURNABY

OFFICIAL ZONING MAP

NO RZ 303

BY-LAW NO. 5947 BEING A BY-LAW TO AMEND BY-LAW NO. 4742 BEING THE BURNABY ZONING BY-LAW, 1965

MAP "B"

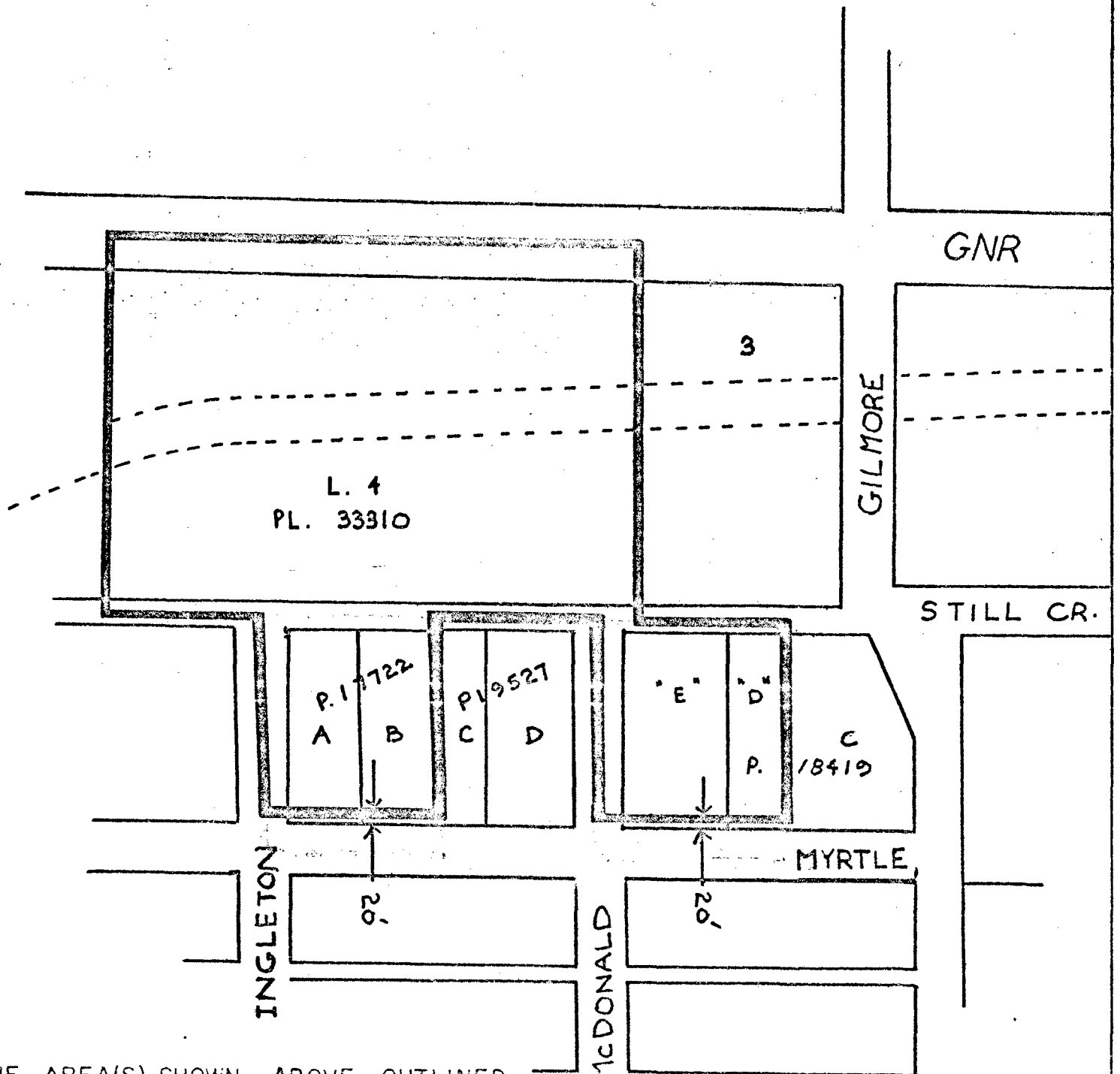
PROPERTY REZONED TO Truck Terminal District M6

Legals: Lot 4, D.L. 118, Plan 33310

Lot "A", Blk. 4 W 1/2, D.L. 69, Plan 17722

Lot "B", Blk. 4 W 1/2, D.L. 69, Plan 17722

Lots "D" and "E", S.D. "B", Blk. 5, D.L. 69, Plan 17688



THE AREA(S) SHOWN ABOVE OUTLINED IN BLACK (—) IS (ARE) REZONED:

FROM: Residential District Five R5 & General Industrial District M2  
 TO: Truck Terminal District M6



PLANNING DEPARTMENT	
SCALE	1:200
DRAWN	G
DATE	

CORPORATION OF THE DISTRICT OF BURNABY

OFFICIAL ZONING MAP

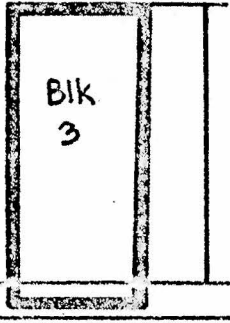
NO RZ 324

BY-LAW NO. 5947 BEING A BY-LAW TO AMEND BY-LAW NO. 4742 BEING THE BURNABY ZONING BY-LAW, 1965

MAP "B"

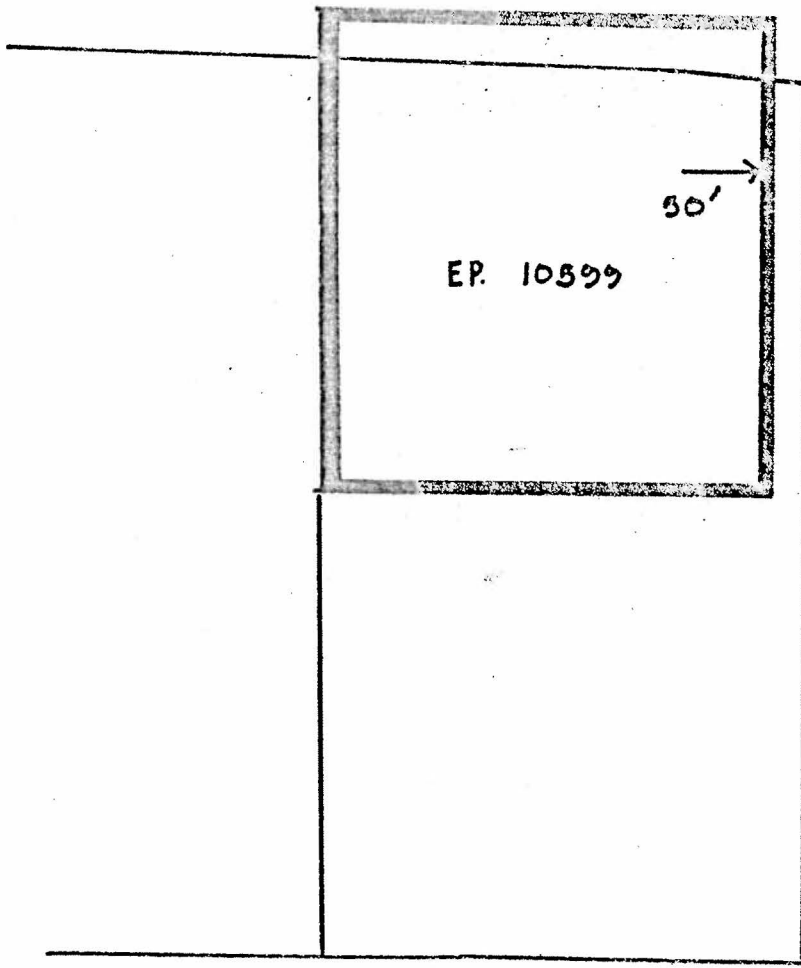
PROPERTY REZONED TO Truck Terminal District M6

Legals: Pcl. 1, Ex. Pl. 10599 and Ex. Pl. 26541,  
 Blk. 2, D.L. 73, Plan 4326  
 Blk. 3, Exc. Sk. 6721 & ex. Pcl. "A",  
 Expl. Pl. 12958, D.L. 74, Plan 2603



REGENT

HIGHWAY 401



WESTMINSTER

CANADA WAY

THE AREA(S) SHOWN ABOVE OUTLINED  
 IN BLACK (—) IS (ARE) REZONED:  
 FROM: General Industrial District M2  
 TO: Truck Terminal District M6



PLANNING DEPARTMENT	
SCALE	1:200
DRAWN	GP
DATE	OCT/71

CORPORATION OF THE DISTRICT OF BURNABY

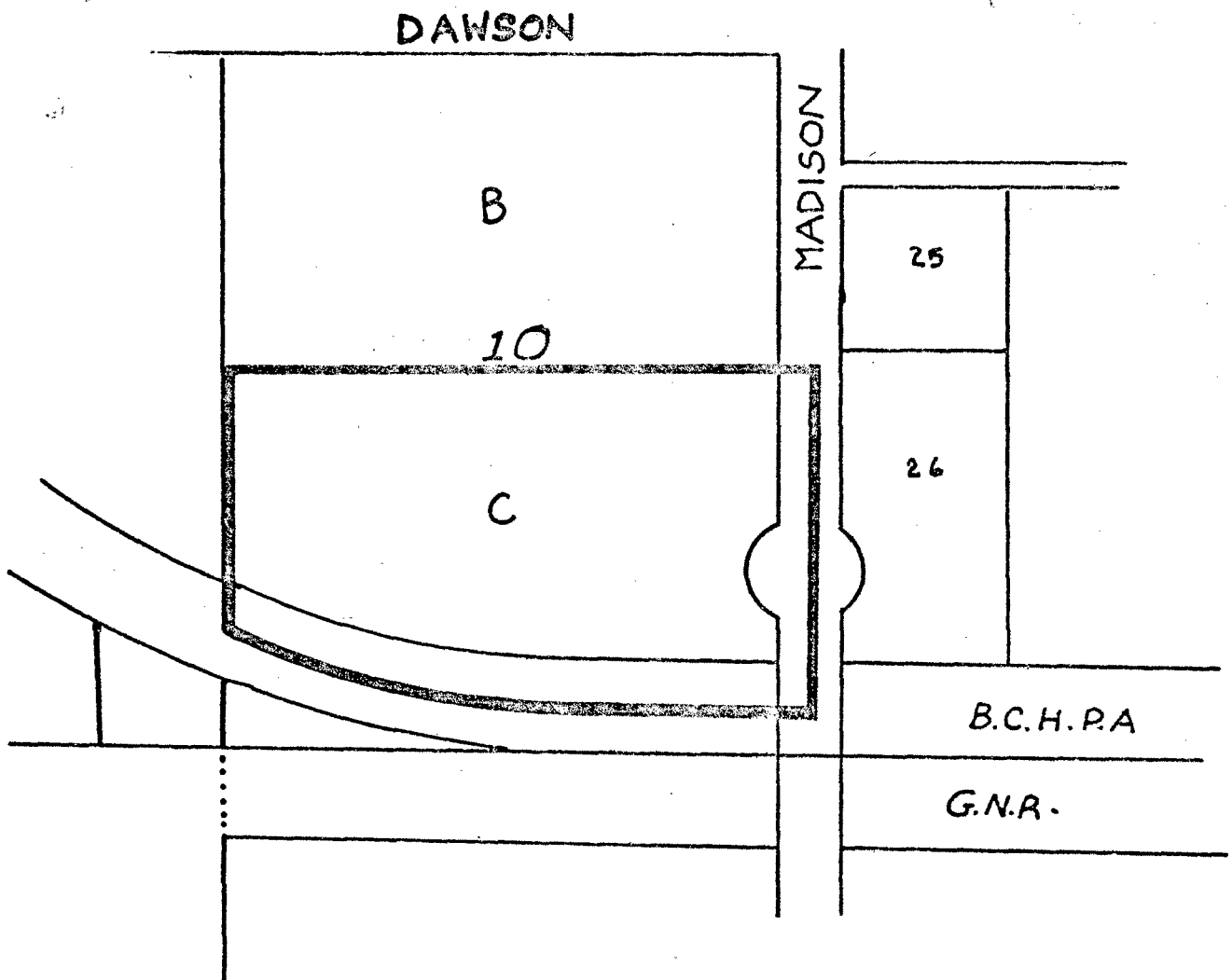
OFFICIAL ZONING MAP



BY-LAW NO. 5947 BEING A BY-LAW TO AMEND BY-LAW  
 NO. 4742 BEING THE BURNABY ZONING BY-LAW, 1965

MAP "B"  
 PROPERTY REZONED TO Truck Terminal District M6

Legal: Lot "C", Blocks 10 & 15, D.L. 119 W 1/2, Plan 19986



THE AREA(S) SHOWN ABOVE OUTLINED  
 IN BLACK (—) IS (ARE) REZONED:  
 FROM: General Industrial District M2  
 TO: Truck Terminal District M6



PLANNING DEPARTMENT	
SCALE	1:200
DRAWN	GP
DATE	06/14/11

CORPORATION OF THE DISTRICT OF BURNABY

OFFICIAL ZONING MAP

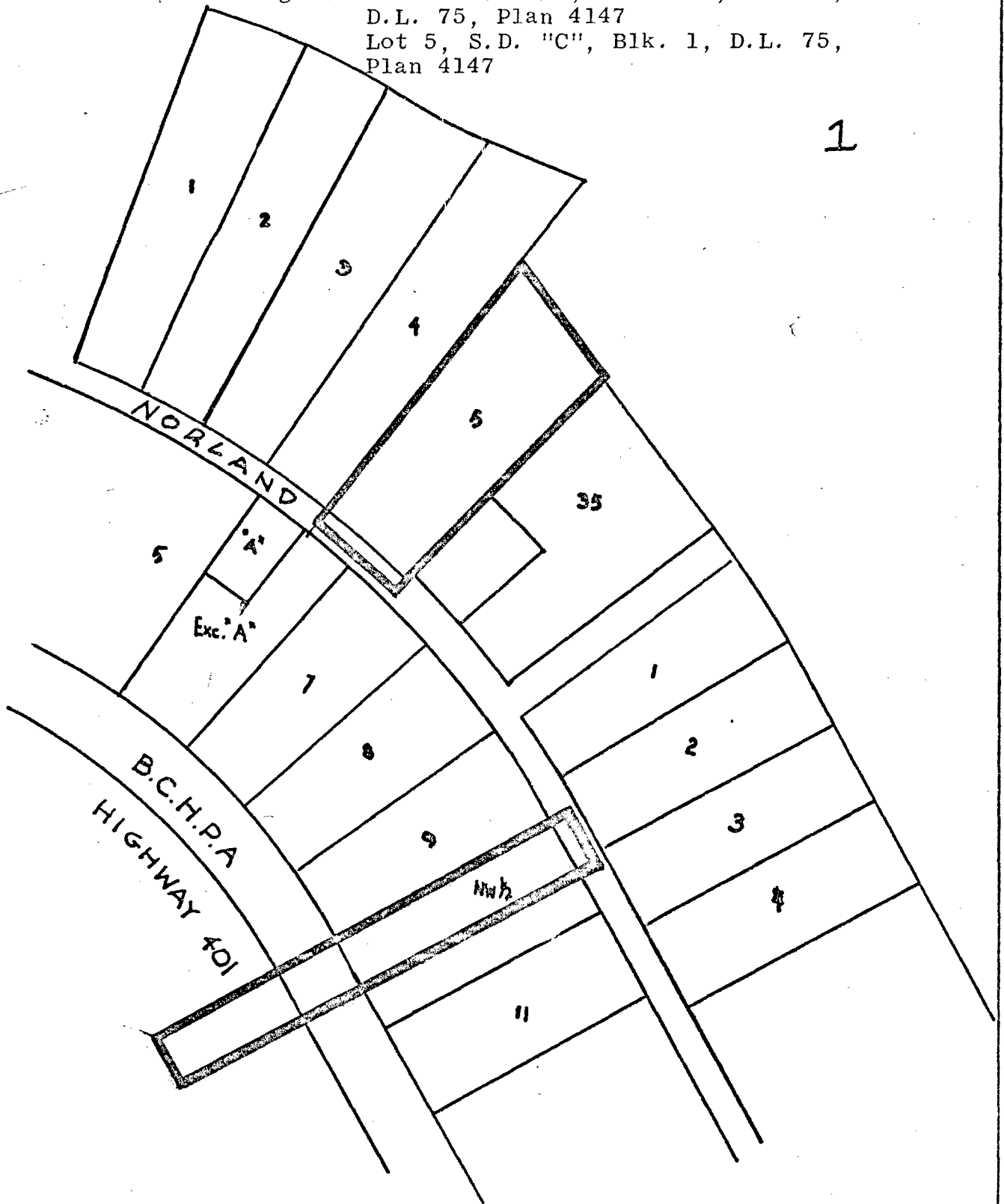
NO. B.7. 007

BY-LAW NO. 5947 BEING A BY-LAW TO AMEND BY-LAW NO. 4742 BEING THE BURNABY ZONING BY-LAW, 1965

MAP "B"

PROPERTY REZONED TO Truck Terminal District M6

Legal: Lot 10 N.W. 1/2, S.D. "A", Blk. 1, D.L. 75, Plan 4147  
 Lot 5, S.D. "C", Blk. 1, D.L. 75, Plan 4147



THE AREA(S) SHOWN ABOVE OUTLINED  
 IN BLACK (—) IS (ARE) REZONED:  
 FROM: General Industrial District M2  
 TO: Truck Terminal District M6



PLANNING DEPARTMENT	
SCALE	1:200
DRAWN	J.P.
DATE	10/1/71

CORPORATION OF THE DISTRICT OF BURNABY

OFFICIAL ZONING MAP

NO. 5.7.355