

THE CORPORATION OF THE DISTRICT OF BURNABY

BY-LAW NO. 5945

A BY-LAW to amend By-Law No. 4742, being
"Burnaby Zoning By-Law 1965"

WHEREAS application for rezoning has ~~now~~ been made to the Council.

AND WHEREAS the Council has held a public hearing thereon after duly giving notice of the time and place of such hearing.

NOW THEREFORE the Council of The Corporation of the District of Burnaby ENACTS as follows:

1. This By-Law may be cited as "BURNABY ZONING BY-LAW 1965, AMENDMENT BY-LAW NO. 43, 1971".
2. The Map (hereinafter called "Map "A'") attached to and forming an integral part of By-Law No. 4742, being "Burnaby Zoning By-Law 1965", and designated as the Official Zoning Map of The Corporation of the District of Burnaby, is hereby amended according to the Maps (hereinafter called "Maps "B'"), marginally numbered R. 2, 387 to 392 incl., annexed to this By-Law, and in accordance with the explanatory legend, notations, references and boundaries designated, described, delimited and specified in particularity shown upon said Maps "B"; and the various boundaries and districts shown upon said Maps "B" respectively are an amendment of and in substitution for the respective districts, designated and marked on said Map "A" insofar as the same are changed, modified or varied thereby, and the said Map "A" shall be deemed to be and is hereby declared to be amended accordingly and the said Maps "B" ~~are~~ hereby declared to be and shall form an integral part of said Map "A", as if originally incorporated therein, and shall be interpreted accordingly.

Read a first time this 23rd day of August, 19 71.

Read a second time this 23rd day of August, 19 71.

Read a third time this 23rd day of August, 19 71.

Reconsidered and adopted by an affirmative vote of at least two-thirds of all the members of the Council this 20th day of September, 19 71

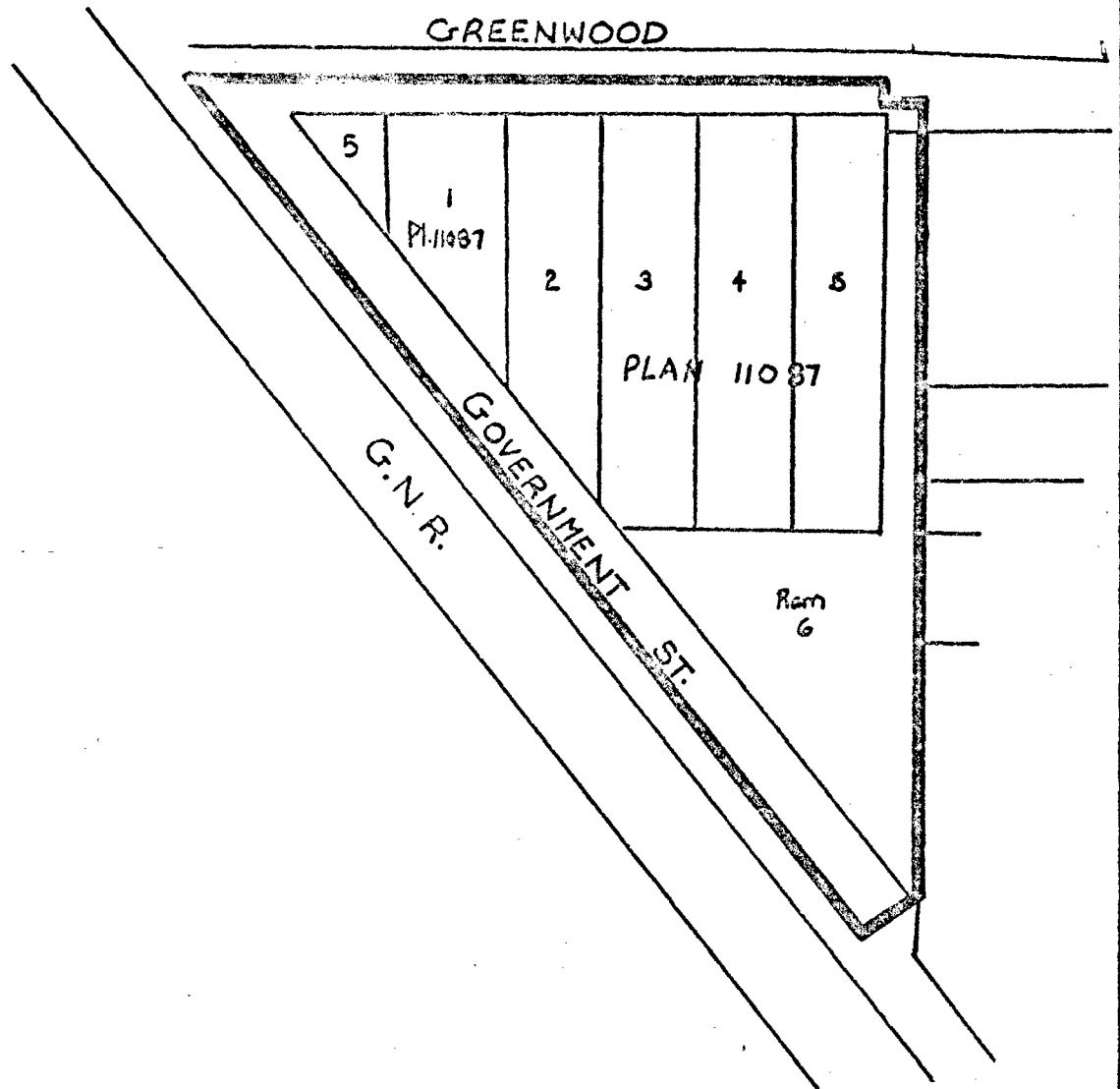


Robert M. Pitche
MAYOR
J. Shaw
CLERK

BY-LAW NO. 5945 BEING A BY-LAW TO AMEND BY-LAW
 NO. 4742 BEING THE BURNABY ZONING BY-LAW, 1965

PROPERTY REZONED TO Light Industrial District M5
MAP "B"

- Legals:
- a) Lot 5, D.L.'s 44/78/131/136, Plan 3049 and lot 1 except part on Filing A54179, Block 6, D.L. 78, Plan 11087
 - b) Lot 2 except part on filing A54179, Block 6, D.L. 78, Plan 11087
 - c) Lot 3 except part on filing A54179, Block 6, D.L. 78, Plan 11087
 - d) Lot 4, Block 6, D.L. 78, Plan 11087
 - e) Lot 5, Block 6, D.L.'s 44/78/131, Plan 11087
 - f) Lot 6, except part on Filing A54179, Block 6, D.L. 78, Plan 11087



THE AREA(S) SHOWN ABOVE OUTLINED
 IN BLACK (—) IS (ARE) REZONED:
 FROM: Manufacturing District M1
 TO: Light Industrial District M5



PLANNING DEPARTMENT	
SCALE:	1:200
DRAWN:	GP

CORPORATION OF THE DISTRICT OF BURNABY

OFFICIAL ZONING MAP

NO RZ 387

BY-LAW NO. 5945 BEING A BY-LAW TO AMEND BY-LAW
 NO. 4742 BEING THE BURNABY ZONING BY-LAW, 1965

MAP "B"

PROPERTY REZONED TO Light Industrial District M5

Legal: Block 14 except
 part on filings
 32393/58377,
 D.L.'s 131/136/44/
 78, Plan 3049

BAINBRIDGE

EDISON

GOVERNMENT

14

Exc. Fil. 32393
 &
 58377

THE AREA(S) SHOWN ABOVE OUTLINED
 IN BLACK (—) IS (ARE) REZONED:
 FROM: Manufacturing District M1
 TO: Light Industrial District M5



PLANNING DEPARTMENT	
SCALE	1:200
DRAWN	GP
DATE	SEPTEMBER 1965

CORPORATION OF THE DISTRICT OF BURNABY

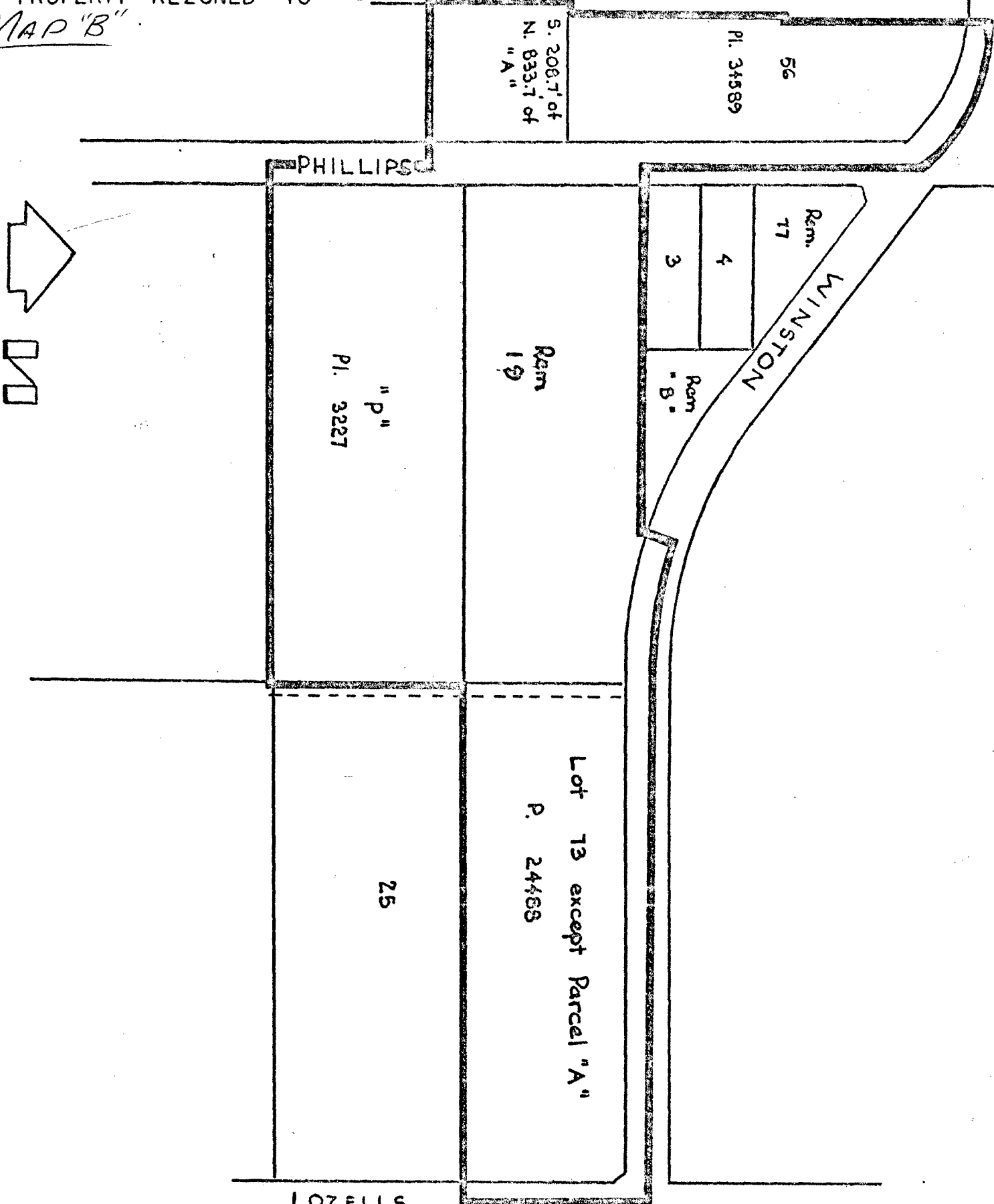
OFFICIAL ZONING MAP

NO RZ 339

BY-LAW NO. 5945 BEING A BY-LAW TO AMEND BY-LAW NO. 4742 BEING THE BURNABY ZONING BY-LAW, 1965

PROPERTY REZONED TO Light Industrial District M5

MAP "B"



THE AREA(S) SHOWN ABOVE OUTLINED IN BLACK (——) IS (ARE) REZONED:
 FROM: Manufacturing District M1
 TO: Light Industrial District M5

PLANNING DEPARTMENT	
SCALE	1:200
DRAWN	GP
DATE	September

CORPORATION OF THE DISTRICT OF BURNABY

OFFICIAL ZONING MAP

NO. RZ. 389

BY LAW NO. 5945 BEING A BY-LAW TO AMEND BY-LAW
NO. 4742 BEING THE BURNABY ZONING BY-LAW, 1965

PROPERTY REZONED TO Light Industrial District M5

MAP "B"

- Legals:
- a) Lot 56, D.L. 44, Plan 34589
 - b) Lot "A", South 208.7 feet of North 833.7 ft.,
Block 18, D.L. 44, Plan 3232
 - c) Lot 19 except Parcel 1, Ref. Plan 31802, D.L. 43,
Plan 3227
 - d) The northerly portion of, Lot "P", D.L. 43, Plan 3227
 - e) Lot 73, except Parcel "A", Ref. Plan 31802, D.L. 43,
Plan 24488

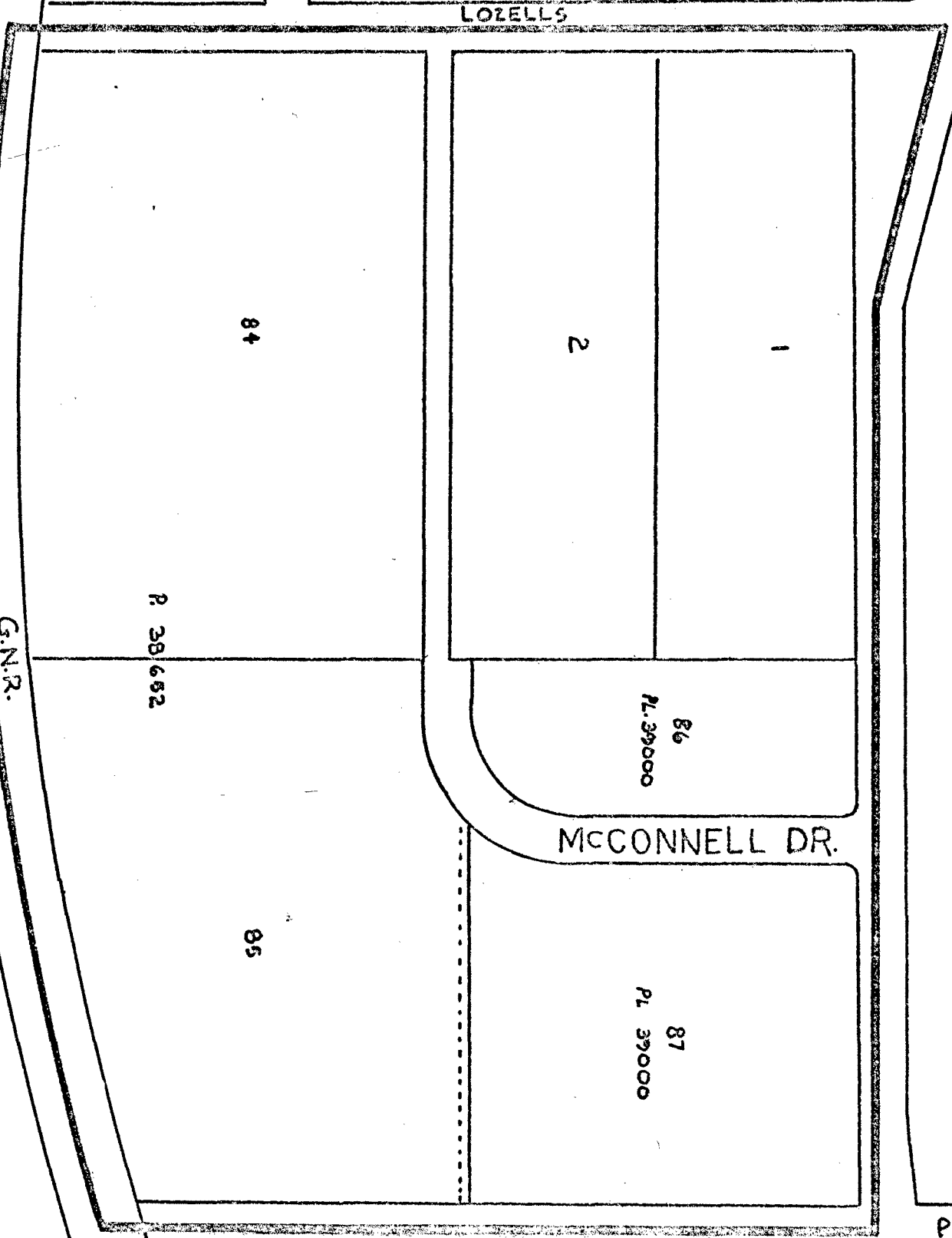
THE AREA(S) SHOWN ABOVE OUTLINED
IN BLACK (---) IS (ARE) REZONED:
FROM: Manufacturing District M1
TO: Light Industrial District M5

PLANNING DEPARTMENT		CORPORATION OF THE DISTRICT OF BURNABY	
SCALE		OFFICIAL ZONING MAP	
DRAWN			
DATE			
		NO RZ 389	

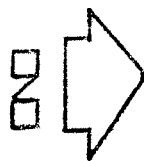
BY-LAW NO. 5945 BEING A BY-LAW TO AMEND BY-LAW NO. 4742 BEING THE BURNABY ZONING BY-LAW, 1965.

PROPERTY REZONED TO Light Industrial District M5

MAP 'B'



THE AREA(S) SHOWN ABOVE OUTLINED
 IN BLACK (—) IS (ARE) REZONED:
 FROM: Manufacturing District M1 and
 General Industrial District M2
 TO: Light Industrial District M5



PLANNING DEPARTMENT	
SCALE	1:200
DRAWN	
DATE	

CORPORATION OF THE DISTRICT OF BURNABY

OFFICIAL ZONING MAP

NO RZ 390

BY-LAW NO. 5945 BEING A BY-LAW TO AMEND BY-LAW
NO. 4742 BEING THE BURNABY ZONING BY-LAW, 1965

PROPERTY REZONED TO Light Industrial District M5

MAP "B"

- Legals: ✓ a) Lot 1, Block 7, D.L. 42, Plan 8559
✓ b) Lot 2, Block 7 part, D.L. 42, Pl. 8559
✓ c) Lot 84, D.L. 42, Plan 38652
✓ d) Lot 86, D.L. 42, Plan 39000
✓ e) Lot 87, D.L. 42, Plan 39000
✓ f) Lot 85, D.L. 42, Plan 38652

THE AREA(S) SHOWN ABOVE OUTLINED
IN BLACK (—) IS (ARE) REZONED:

FROM: Manufacturing District M1 and
General Industrial District M2
TO: Light Industrial District M5

P L A N N I N G D E P A R T M E N T	
SCALE	
DRAWN	
DATE	

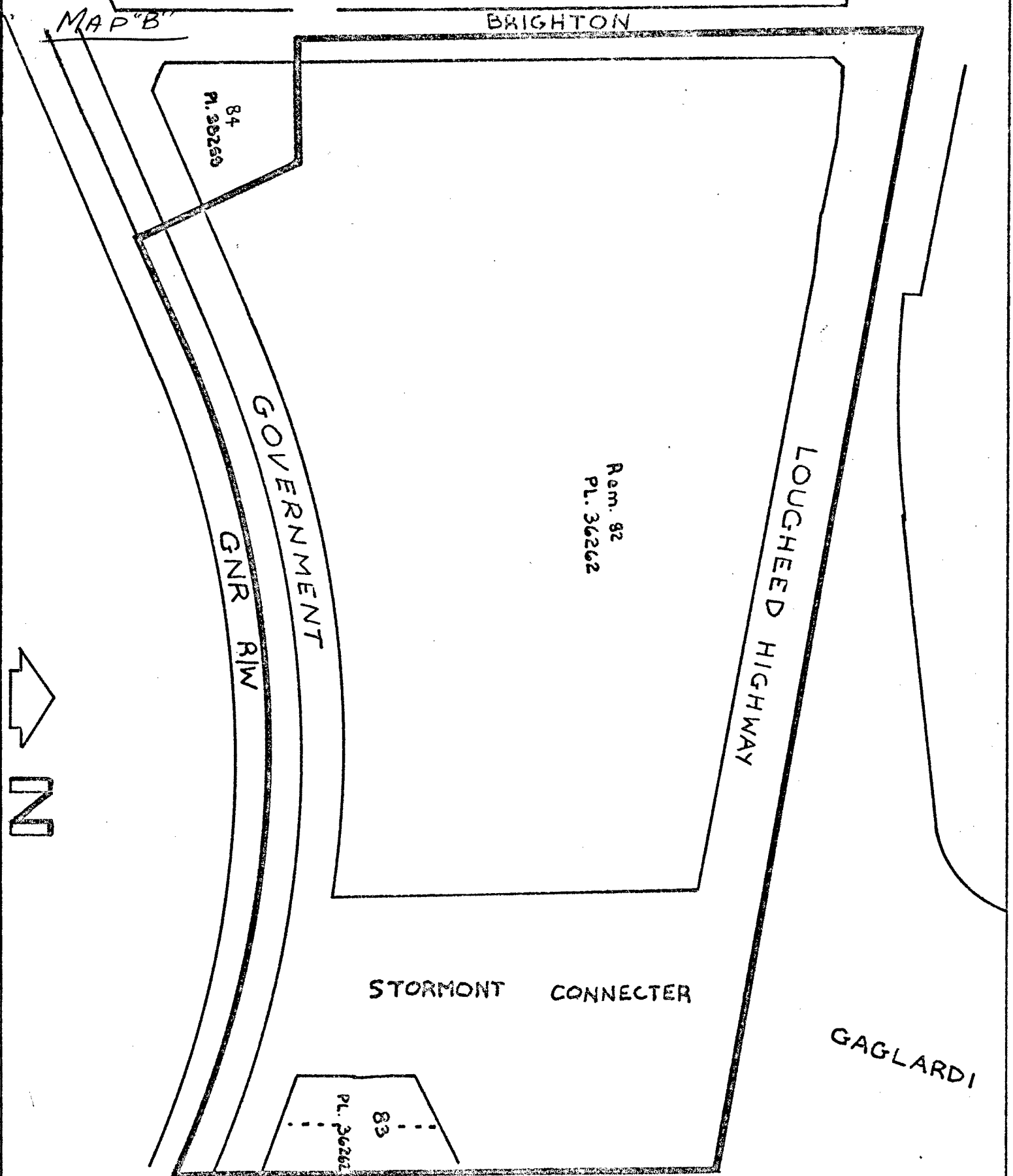
CORPORATION OF THE DISTRICT OF BURNABY

OFFICIAL ZONING MAP

NO RZ 390

BY-LAW NO. 5945 BEING A BY-LAW TO AMEND BY-LAW
 NO. 4742 BEING THE BURNABY ZONING BY-LAW, 1965

PROPERTY REZONED TO Light Industrial District M5



THE AREA(S) SHOWN ABOVE OUTLINED
 IN BLACK (-----) IS (ARE) REZONED:
 FROM: Manufacturing District M1
 TO: Light Industrial District M5

PLANNING DEPARTMENT	
SCALE	1:200
DRAWN	C.P.
DATE	19/20/1997

CORPORATION OF THE DISTRICT OF BURNABY

OFFICIAL ZONING MAP

NO RZ 391

BY-LAW NO. 5945 BEING A BY-LAW TO AMEND BY-LAW
NO. 4742 BEING THE BURNABY ZONING BY-LAW, 1965

PROPERTY REZONED TO Light Industrial District M5

MAP "B"

LEGAL: Lot 82 except Plan 38253, D.L. 10, Pl. 36262

Lot 83, D.L. 10, Plan 36262

THE AREA(S) SHOWN ABOVE OUTLINED

IN BLACK (---) IS (ARE) REZONED:

FROM: Manufacturing District M1

TO: Light Industrial District M5

PLANNING
DEPARTMENT

CORPORATION OF THE DISTRICT OF BURNABY

SCALE

DRAWN

DATE

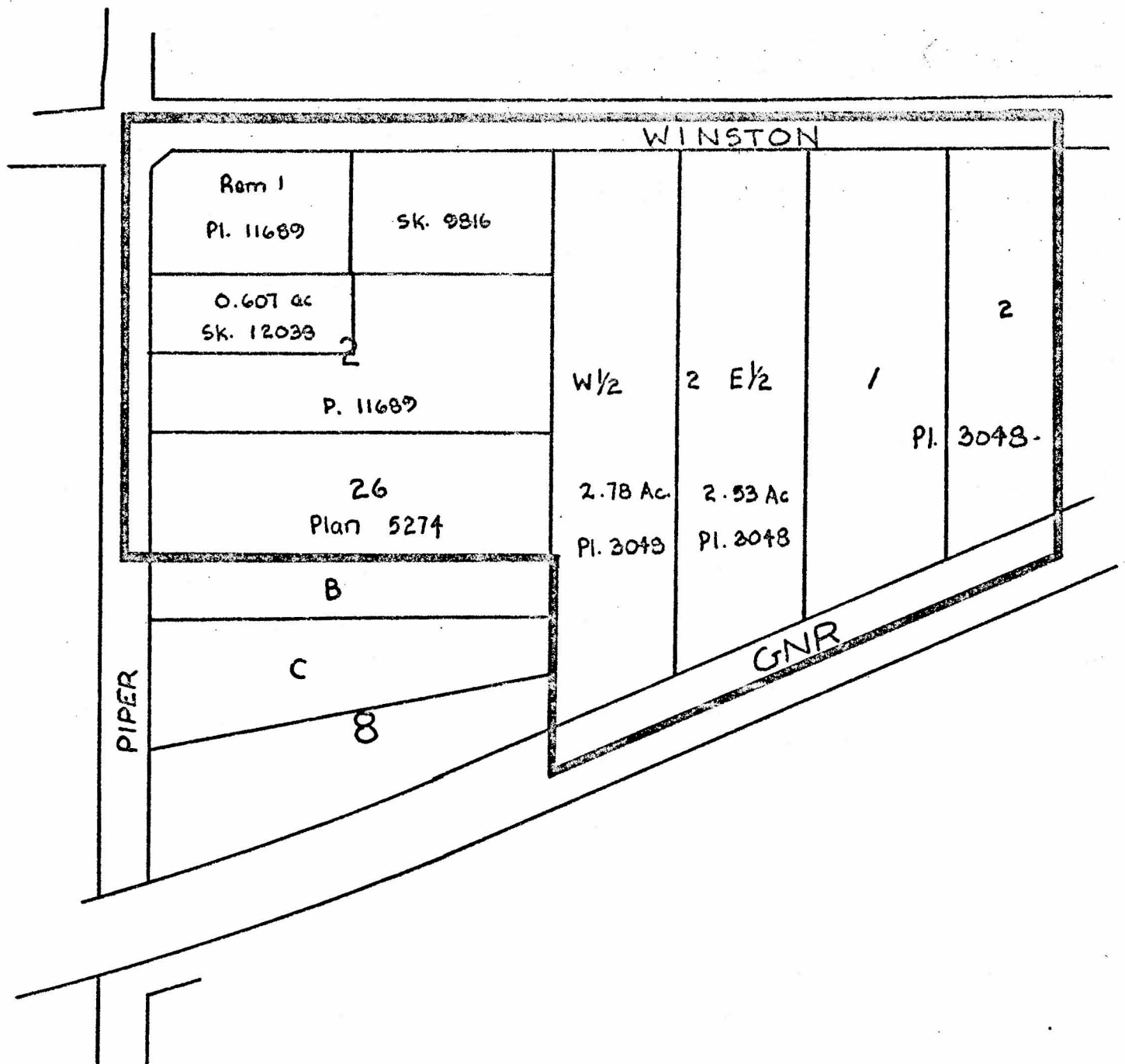
OFFICIAL ZONING MAP

NO RZ 391

BY-LAW NO. 5945 BEING A BY-LAW TO AMEND BY-LAW NO. 4742 BEING THE BURNABY ZONING BY-LAW, 1965

PROPERTY REZONED TO Light Industrial District M5

MAP "B"



THE AREA(S) SHOWN ABOVE OUTLINED IN BLACK (—) IS (ARE) REZONED:
 FROM: Manufacturing District M1
 TO: Light Industrial District M5



PLANNING DEPARTMENT	
SCALE	1:200
DRAWN	C.P.
DATE	SEP 1965

CORPORATION OF THE DISTRICT OF BURNABY

OFFICIAL ZONING MAP

NO R 7 200

BY-LAW NO. 5945 BEING A BY-LAW TO AMEND BY-LAW
 NO. 4742 BEING THE BURNABY ZONING BY-LAW, 1965.

PROPERTY REZONED TO Light Industrial District M5

MAP "B"

- Legals:
- a) Lot 1 except Ref. Pl. 31802, Blk. 8, D.L. 40, Plan 11689
 - b) Parcel "A", Expl. Pl. 12038 of 2, S.D. 26, Block 8, D.L. 40, Plan 11689
 - c) Lot 2 except Sketch 12038, R.S.D. "A", part, S.D. 26, Blk. 8, D.L. 40, Pl. 11689
 - d) Lot "A", South 165.4 ft., S.D. 26, Blk. 8, D.L. 40, Plan 5274
 - e) Lot "A", Sketch 9816, S.D. 26, Blk. 8, D.L. 40, Plan 5274
 - f) Lot 2 West 1/2, Block 9, D.L. 40, Plan 3048
 - g) Lot 2 East 1/2, Block 9, D.L. 40, Plan 3048
 - h) Lot 1, Block 9, D.L. 40, Plan 3048
 - i) Lot 2, Block 10, D.L. 40, Plan 3048

THE AREA(S) SHOWN ABOVE OUTLINED
 IN BLACK () IS (ARE) REZONED:

FROM: Manufacturing District M1
 TO: Light Industrial District M5

P L A N N I N G D E P A R T M E N T	
SCALE	
DRAWN	
DATE	

CORPORATION OF THE DISTRICT OF BURNABY

OFFICIAL ZONING MAP

NO RZ 392