

THE CORPORATION OF THE DISTRICT OF BURNABY

BY-LAW NO. 5880

A BY-LAW to amend By-Law No. 4742, being  
"Burnaby Zoning By-Law 1965".

WHEREAS application for rezoning has been made to  
the Council.

AND WHEREAS the Council has held a public hearing  
thereon after duly giving notice of the time and place of such  
hearing.

NOW THEREFORE the Council of The Corporation of the  
District of Burnaby ENACTS as follows:

1. This By-law may be cited as "BURNABY ZONING BY-LAW  
1965, AMENDMENT BY-LAW NO. 19, 1971."
2. The Map (hereinafter called "Map 'A'"), attached to  
and forming an integral part of By-Law No. 4742, being "Burnaby  
Zoning By-Law 1965", and designated as the Official Zoning Map  
of The Corporation of the District of Burnaby, is hereby amended  
according to the Map (hereinafter called "Map 'B'"), marginally  
numbered R.Z. 381, annexed to this By-law, and in accord-  
ance with the explanatory legend, notations, references and  
boundaries designated, described, delimited and specified in  
particularity shown upon said Map 'B'; and the various boundaries  
and districts shown upon said Map 'B' respectively are an amend-  
ment of and in substitution for the respective districts, designated  
and marked on said Map 'A' insofar as the same are changed, modified  
or varied thereby, and the said Map 'A' shall be deemed to be and  
is hereby declared to be amended accordingly and the said Map 'B'  
is hereby declared to be and shall form an integral part of said  
Map 'A', as if originally incorporated therein and shall be inter-  
preted accordingly.

3. The Comprehensive Development Plan entitled "Lake City East Housing Development, Phase II", prepared by Thompson, Berwick, Pratt and Partners, Architects, Engineers and Planners, and comprising complete architectural plans and landscape drawings, and on file in the office of the Director of Planning, is deemed to be attached to and form part of this by-law.

Read a first time this 26th day of April 19 71

Read a second time this 26th day of April 19 71

Read a third time this 25th day of May 19 71

Reconsidered and adopted by an affirmative vote of at least two-thirds of all the members of the Council this 28th day of June 1971.

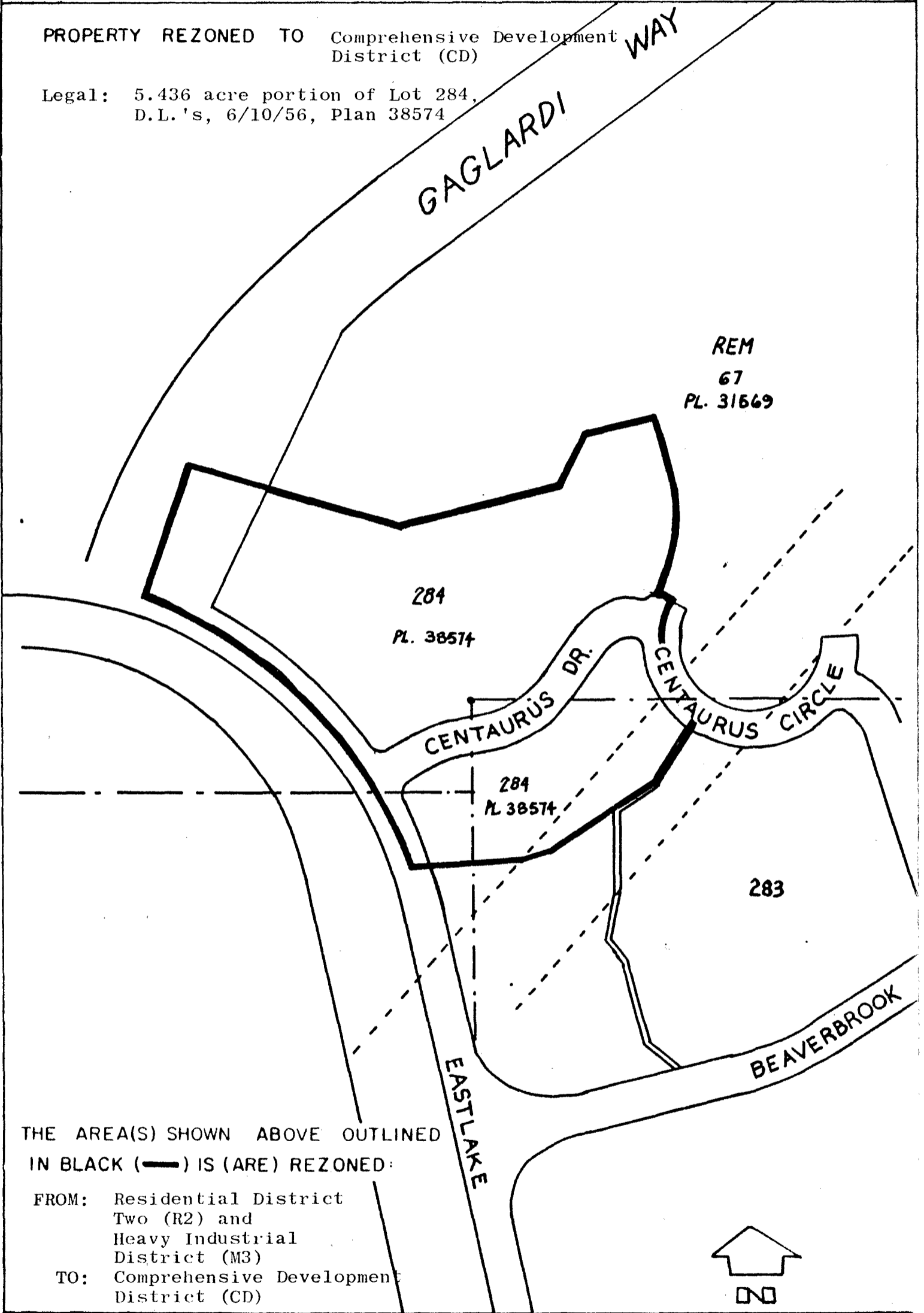
*Robert W. Pettit*  
MAYOR

*James Hudson*  
CLERK

BY-LAW NO. 5880 BEING A BY-LAW TO AMEND BY-LAW  
 NO. 4742 BEING THE BURNABY ZONING BY-LAW, 1965

PROPERTY REZONED TO Comprehensive Development  
 District (CD)

Legal: 5.436 acre portion of Lot 284,  
 D.L.'s, 6/10/56, Plan 38574



THE AREA(S) SHOWN ABOVE OUTLINED  
 IN BLACK (—) IS (ARE) REZONED:

FROM: Residential District  
 Two (R2) and  
 Heavy Industrial  
 District (M3)  
 TO: Comprehensive Development  
 District (CD)

PLANNING DEPARTMENT	
SCALE	1:200
DRAWN	G.P.
DATE	SEPT 28 71

CORPORATION OF THE DISTRICT OF BURNABY

OFFICIAL ZONING MAP

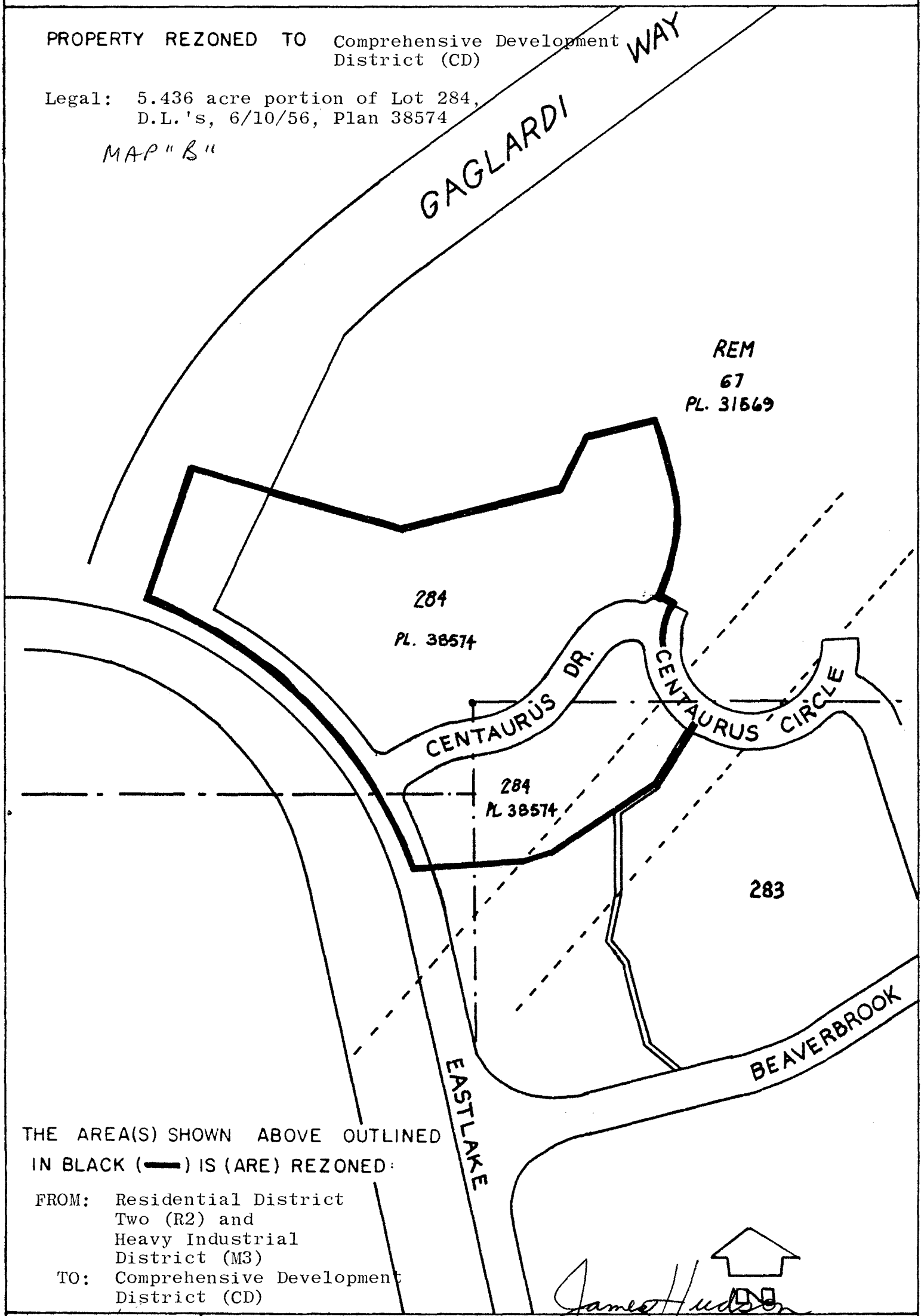
NO R Z 381

BY-LAW NO. 5880 BEING A BY-LAW TO AMEND BY-LAW  
 NO. 4742 BEING THE BURNABY ZONING BY-LAW, 1965

PROPERTY REZONED TO Comprehensive Development District (CD) **WAY**

Legal: 5.436 acre portion of Lot 284,  
 D.L.'s, 6/10/56, Plan 38574

MAP "B"



REM  
 67  
 PL. 31669

284  
 PL. 38574

284  
 PL. 38574

283

THE AREA(S) SHOWN ABOVE OUTLINED  
 IN BLACK (—) IS (ARE) REZONED:

FROM: Residential District  
 Two (R2) and  
 Heavy Industrial  
 District (M3)  
 TO: Comprehensive Development  
 District (CD)

PLANNING DEPARTMENT	
SCALE	1:200
DRAWN	GP
DATE	SEPT 28 77

CORPORATION OF THE DISTRICT OF BURNABY

OFFICIAL ZONING MAP

NO RZ 381