

THE CORPORATION OF THE DISTRICT OF BURNABY

BY-LAW NO. 5841

A BY-LAW to amend By-Law No. 4742, being
"Burnaby Zoning By-Law 1965"

WHEREAS application for rezoning has ~~been~~ been made to the Council.

AND WHEREAS the Council has held a public hearing thereon after duly giving notice of the time and place of such hearing.

NOW THEREFORE the Council of The Corporation of the District of Burnaby ENACTS as follows:

1. This By-Law may be cited as "BURNABY ZONING BY-LAW 1965, AMENDMENT BY-LAW NO. 3, 19 71".
2. The Map (hereinafter called "Map "A"") attached to and forming an integral part of By-Law No. 4742, being "Burnaby Zoning By-Law 1965", and designated as the Official Zoning Map of The Corporation of the District of Burnaby, is hereby amended according to the Map (hereinafter called "Map "B""), marginally numbered R.Z. ^{348 to 364} incl., annexed to this By-Law, and in accordance with the explanatory legend, notations, references and boundaries designated, described, delimited and specified in particularity shown upon said Map "B"; and the various boundaries and districts shown upon said Map "B" respectively are an amendment of and in substitution for the respective districts, designated and marked on said Map "A" insofar as the same are changed, modified or varied thereby, and the said Map "A" shall be deemed to be and is hereby declared to be amended accordingly and the said Map "B" is hereby declared to be and shall form an integral part of said Map "A", as if originally incorporated therein, and shall be interpreted accordingly.

Read a first time this 25th day of January, 19 71.

Read a second time this 25th day of January, 19 71.

Read a third time this 25th day of January, 19 71.

Reconsidered and adopted by an affirmative vote of at least two-thirds of all the members of the Council this 1st day of February, 19 71.

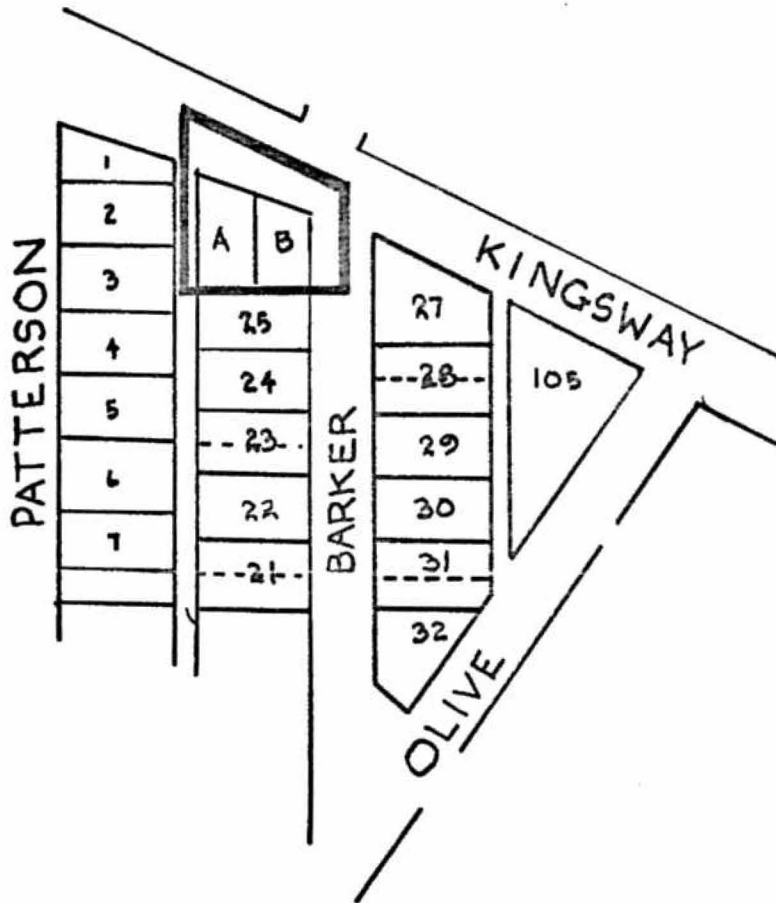
Robert M. Pitche
MAYOR
J. Shaw
CLERK

BY-LAW NO. 5841 BEING A BY-LAW TO AMEND BY-LAW
 NO. 4742 BEING THE BURNABY ZONING BY-LAW, 1965

PROPERTY REZONED TO DRIVE-IN DISTRICT (C7)

MAP "B"

Legal: D.L. 151, Lot 106, Plan 36700



THE AREA(S) SHOWN ABOVE OUTLINED
 IN BLACK (—) IS (ARE) REZONED:

From: Service Commercial District (C4)
 To: Drive-In District (C7)



PLANNING DEPARTMENT	
SCALE	1:200
DRAWN	GP
DATE	FEB 11 71

CORPORATION OF THE DISTRICT OF BURNABY

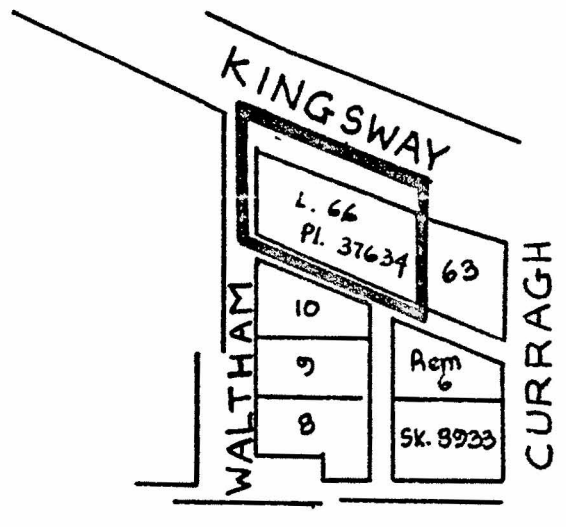
OFFICIAL ZONING MAP

NO RZ 348

BY-LAW NO. 5841 BEING A BY-LAW TO AMEND BY-LAW
 NO. 4742 BEING THE BURNABY ZONING BY-LAW, 1965

PROPERTY REZONED TO DRIVE-IN DISTRICT (C7)

Legal" D.L. 97, Lot 66, Plan 37634



THE AREA(S) SHOWN ABOVE OUTLINED
 IN BLACK (—) IS (ARE) REZONED:

From: Service Commercial District (C4)

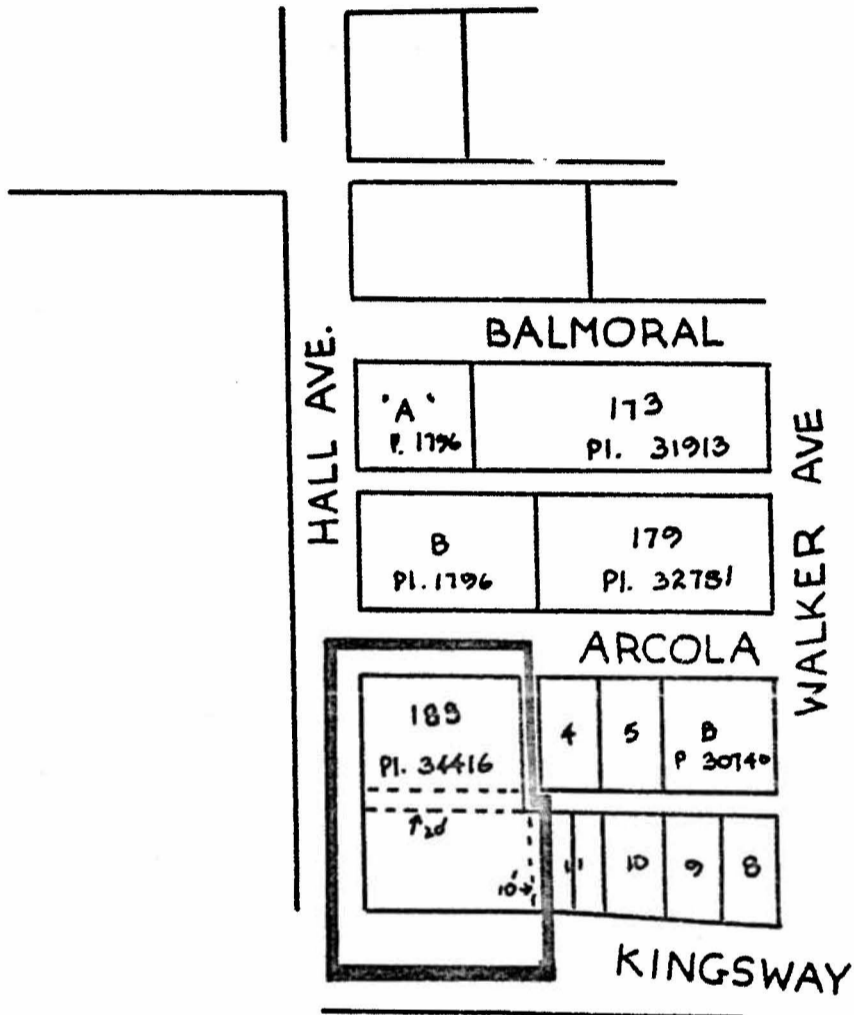
To: Drive-In District (C7)

PLANNING DEPARTMENT		CORPORATION OF THE DISTRICT OF BURNABY	
SCALE	1:200	OFFICIAL ZONING MAP	
DRAWN	GP		
DATE	FEB 11 1971		
		NO RZ 349	

BY-LAW NO. 5841 BEING A BY-LAW TO AMEND BY-LAW
NO. 4742 BEING THE BURNABY ZONING BY-LAW, 1965

PROPERTY REZONED TO DRIVE-IN DISTRICT (C7)

Legal: D.L. 95, Lot 183, Plan 34416



THE AREA(S) SHOWN ABOVE OUTLINED
IN BLACK (—) IS (ARE) REZONED:

From: Service Commercial District (C4)

To: Drive-In District (C7)

PLANNING DEPARTMENT	
SCALE	1:200
DRAWN	G.P.
DATE	FEB 11 1971

CORPORATION OF THE DISTRICT OF BURNABY

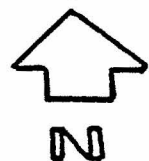
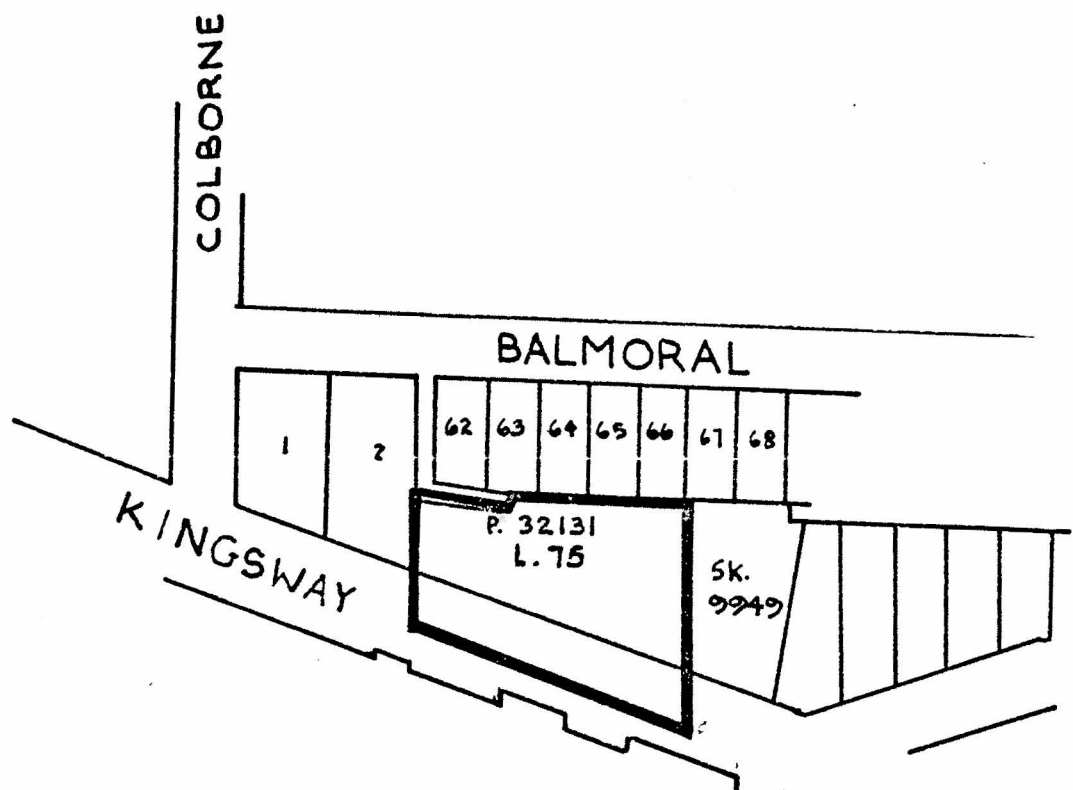
OFFICIAL ZONING MAP

NO RZ 350

BY-LAW NO. 5841 BEING A BY-LAW TO AMEND BY-LAW NO. 4742 BEING THE BURNABY ZONING BY-LAW, 1965

PROPERTY REZONED TO DRIVE-IN RESTAURANT DISTRICT (C7)

Legal: D.L. 96, Lot 75, Plan 32131



THE AREA(S) SHOWN ABOVE OUTLINED IN BLACK (—) IS (ARE) REZONED:

From: Service Commercial District (C4)

To: Drive-In Restaurant District

PLANNING DEPARTMENT	
SCALE	1:200
DRAWN	GP
DATE	FEB 6, 1971

CORPORATION OF THE DISTRICT OF BURNABY

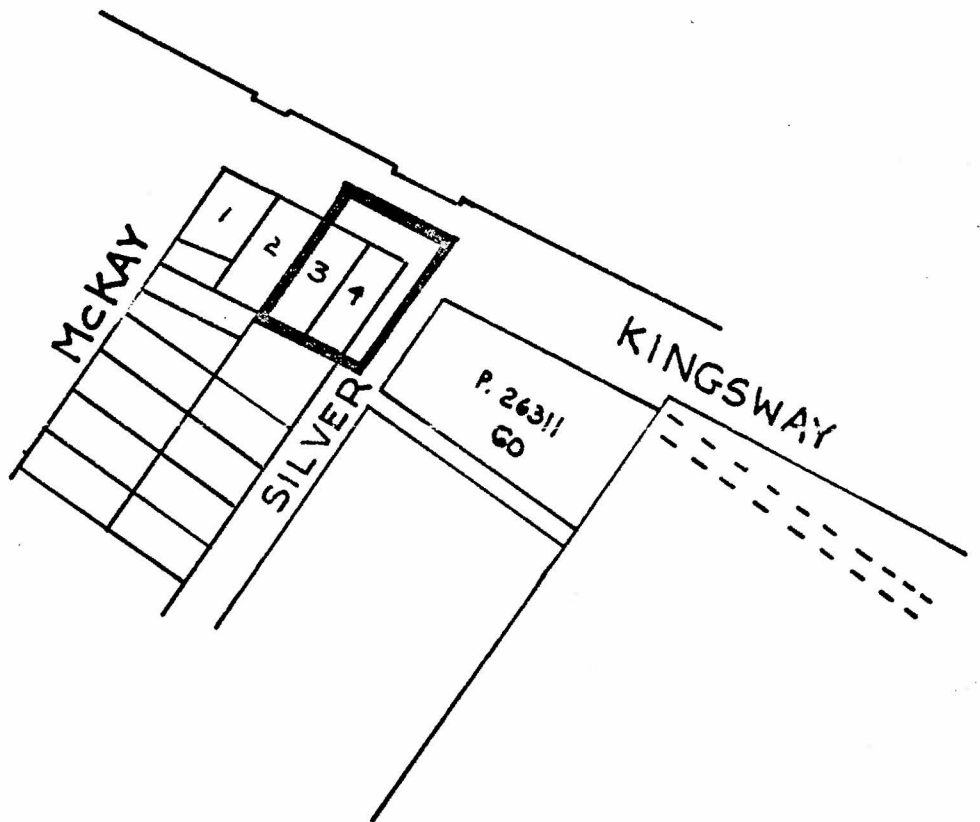
OFFICIAL ZONING MAP

NO RZ 351

BY-LAW NO. 5841 BEING A BY-LAW TO AMEND BY-LAW
 NO. 4742 BEING THE BURNABY ZONING BY-LAW, 1965

PROPERTY REZONED TO DRIVE-IN RESTAURANT DISTRICT (C7)

Legal: D.L. 153, Block 15, Lots 3 and 4, Plan 1109



THE AREA(S) SHOWN ABOVE OUTLINED
 IN BLACK (—) IS (ARE) REZONED:

From: Service Commercial (C4)
 To: Drive-In Restaurant District (C7)



PLANNING DEPARTMENT	
SCALE	1:200
DRAWN	CP
DATE	FEB 11 71

CORPORATION OF THE DISTRICT OF BURNABY

OFFICIAL ZONING MAP

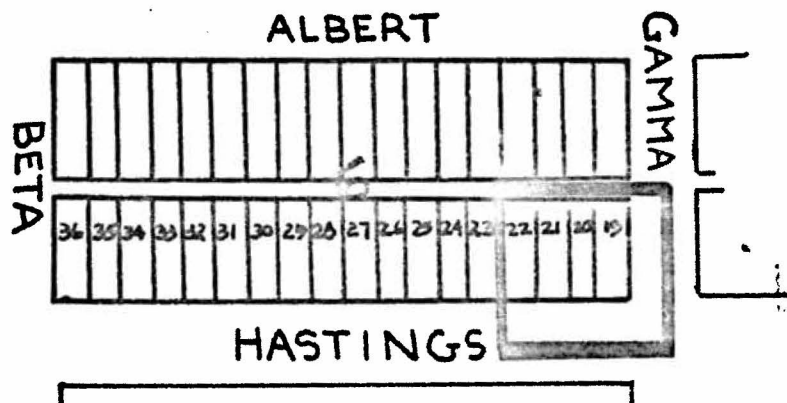
NO RZ 352.

BY-LAW NO. 5841 BEING A BY-LAW TO AMEND BY-LAW NO. 4742 BEING THE BURNABY ZONING BY-LAW, 1965

PROPERTY REZONED TO DRIVE-IN RESTAURANT DISTRICT (C7)

Old Legal: Lots 22,21,20 and 19, Block 6, D.L. 122, Plan 1308

New Legal: Lot "A", Block 6, D.L. 122, Plan 1308



THE AREA(S) SHOWN ABOVE OUTLINED IN BLACK (—) IS (ARE) REZONED:

From: Service Commercial District (C4)

To: Drive-In Restaurant District (C7)

PLANNING DEPARTMENT	
SCALE	1:200
DRAWN	CP
DATE	FEB/6/71

CORPORATION OF THE DISTRICT OF BURNABY

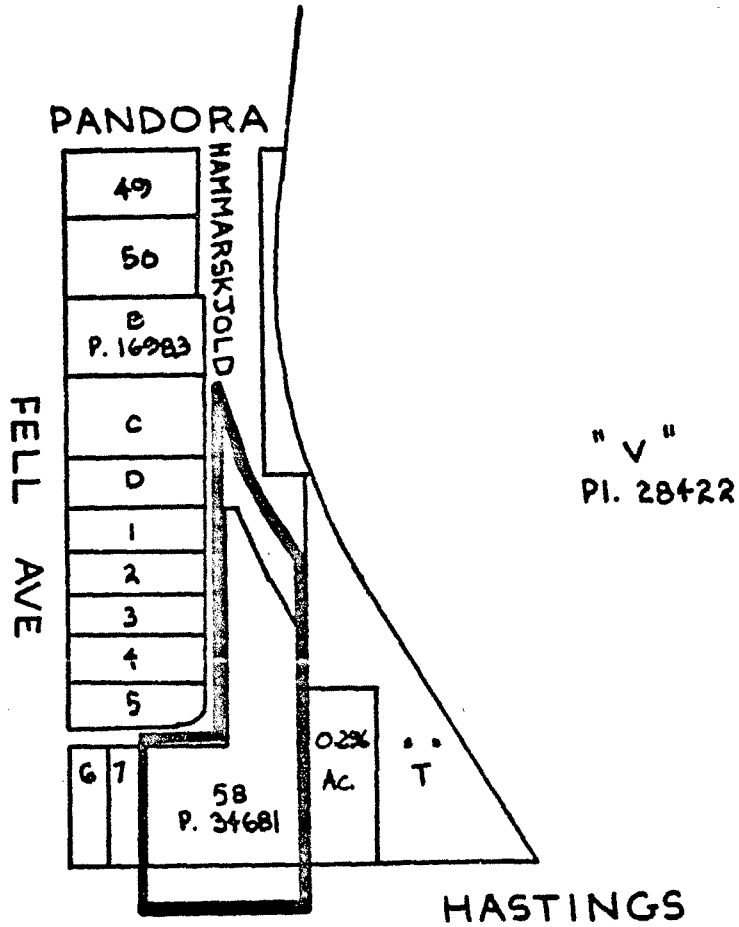
OFFICIAL ZONING MAP

NO RZ 353

BY-LAW NO. 5841 BEING A BY-LAW TO AMEND BY-LAW
 NO. 4742 BEING THE BURNABY ZONING BY-LAW, 1965

PROPERTY REZONED TO DRIVE-IN RESTAURANT DISTRICT (C7)

Legal: D.L. 205, Lot 58, Plan 34681



THE AREA(S) SHOWN ABOVE OUTLINED
 IN BLACK (—) IS (ARE) REZONED:

From: Service Commercial District (C4)

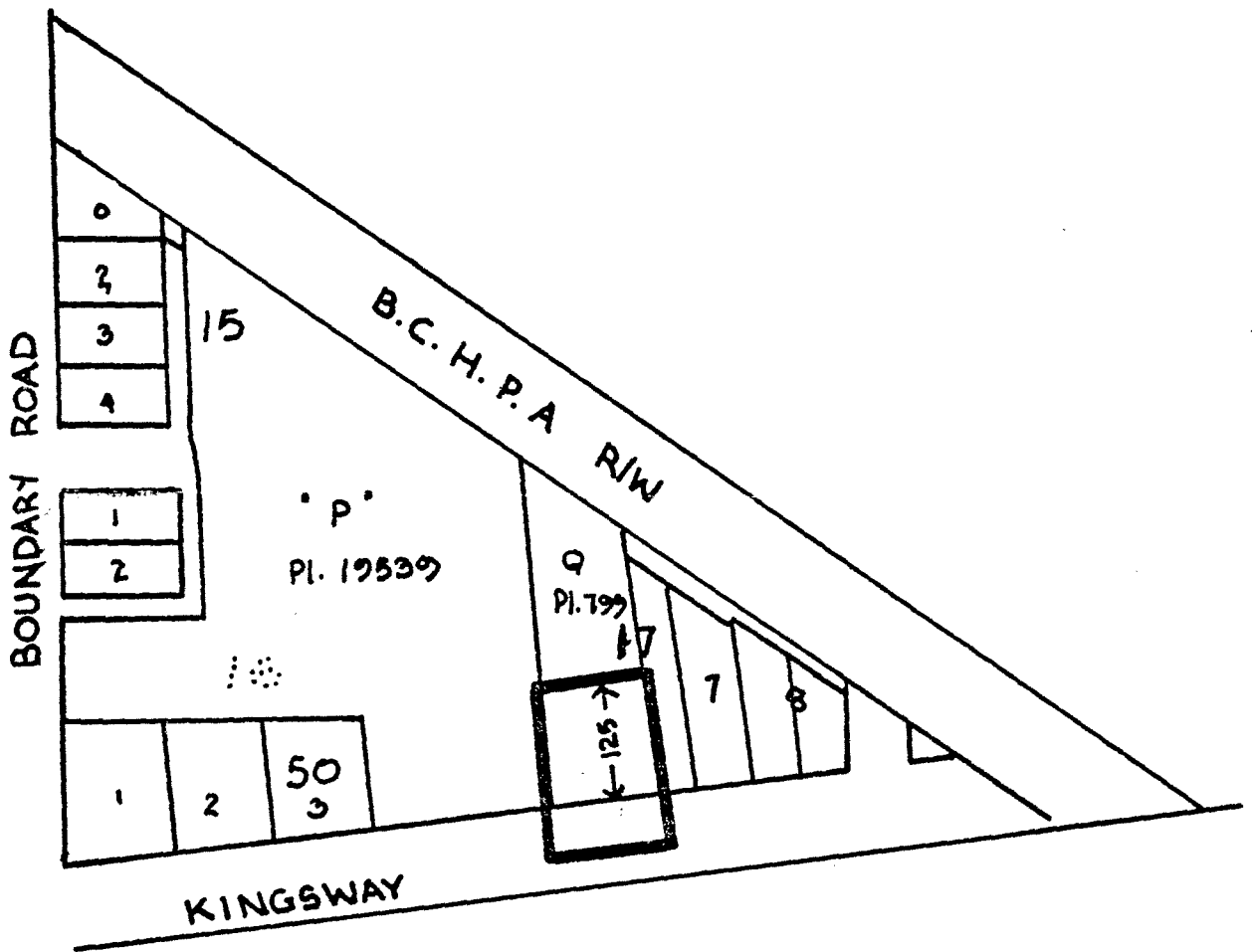
To: Drive-In Restaurant District (C7)

PLANNING DEPARTMENT		CORPORATION OF THE DISTRICT OF BURNABY	
SCALE	1:200	OFFICIAL ZONING MAP	
DRAWN	GP		
DATE	FEB. 6, 1971		
		NO RZ 354	

BY-LAW NO. 5841 BEING A BY-LAW TO AMEND BY-LAW
 NO. 4742 BEING THE BURNABY ZONING BY-LAW, 1965

PROPERTY REZONED TO DRIVE-IN RESTAURANT DISTRICT (C7)

Legal: Lot 9, Blocks 17 and 50, D.L. 35/151, Plan 799



THE AREA(S) SHOWN ABOVE OUTLINED
 IN BLACK (—) IS (ARE) REZONED:

From: Service Commercial District (C4)

To: Drive-In Restaurant District (C7)

PLANNING DEPARTMENT	
SCALE	1 : 200
DRAWN	GP

CORPORATION OF THE DISTRICT OF BURNABY

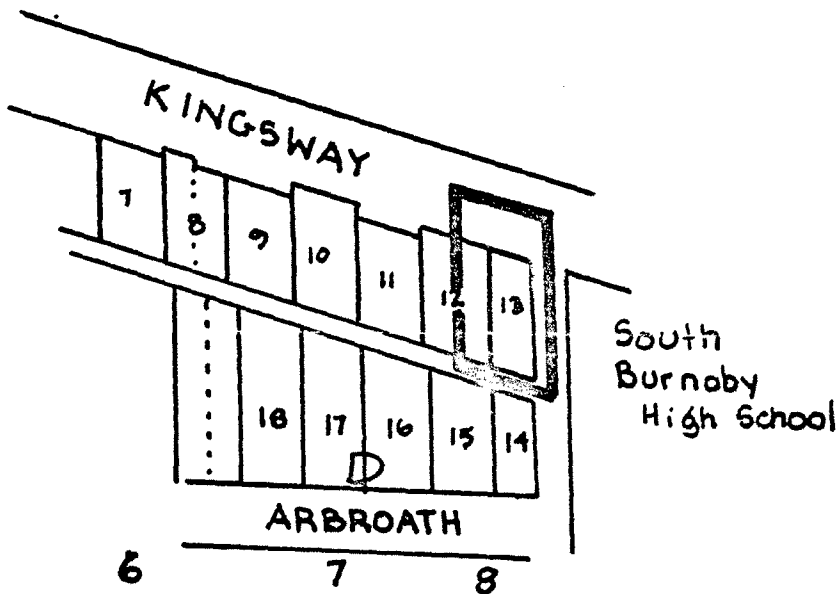
OFFICIAL ZONING MAP

NO RZ 355

BY-LAW NO. 5841 BEING A BY-LAW TO AMEND BY-LAW
 NO. 4742 BEING THE BURNABY ZONING BY-LAW, 1965

PROPERTY REZONED TO DRIVE-IN RESTAURANT DISTRICT (C7)

Legal: Lot 12 except W. 34.5' and 13, S.D. 6/8,
 Block "D", D.L. 96, Plan 1740



THE AREA(S) SHOWN ABOVE OUTLINED
 IN BLACK (—) IS (ARE) REZONED:

From: Service Commercial District (C4)

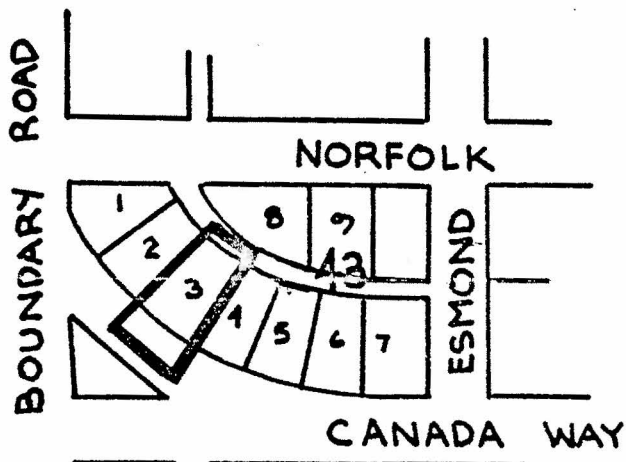
To: Drive-In Restaurant District (C7)

PLANNING DEPARTMENT		CORPORATION OF THE DISTRICT OF BURNABY	
SCALE	1:200	OFFICIAL ZONING MAP	
DRAWN	GP		
DATE	FEB 16 71		
		NO RZ 356	

BY-LAW NO. 5841 BEING A BY-LAW TO AMEND BY-LAW
 NO. 4742 BEING THE BURNABY ZONING BY-LAW, 1965

PROPERTY REZONED TO DRIVE-IN RESTAURANT DISTRICT (C7)

Legal: Lot 3, S.D. "A", Block 43, D.L. 69, Plan 4369



THE AREA(S) SHOWN ABOVE OUTLINED
 IN BLACK (—) IS (ARE) REZONED:

From: Service Commercial District (C4)

To: Drive-In Restaurant District (C7)

PLANNING DEPARTMENT	
SCALE	1:200
DRAWN	GP
DATE	FEB 17 1971

CORPORATION OF THE DISTRICT OF BURNABY

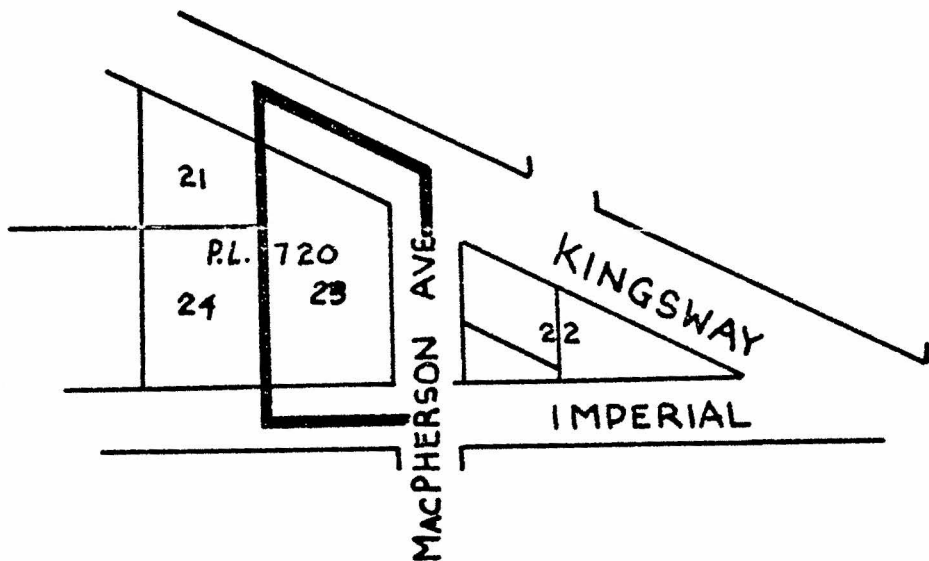
OFFICIAL ZONING MAP

NO RZ 357

BY-LAW NO. 5841 BEING A BY-LAW TO AMEND BY-LAW
 NO. 4742 BEING THE BURNABY ZONING BY-LAW, 1965

PROPERTY REZONED TO DRIVE-IN RESTAURANT DISTRICT (C7)

Legal: Lot 23, Plan 720, D.L. 94S



THE AREA(S) SHOWN ABOVE OUTLINED
 IN BLACK (—) IS (ARE) REZONED:

From: Service Commercial District (C4)

To: Drive-In Restaurant District (C7)

PLANNING DEPARTMENT	
SCALE	1:200
DRAWN	GP
DATE	FEB 71

CORPORATION OF THE DISTRICT OF BURNABY

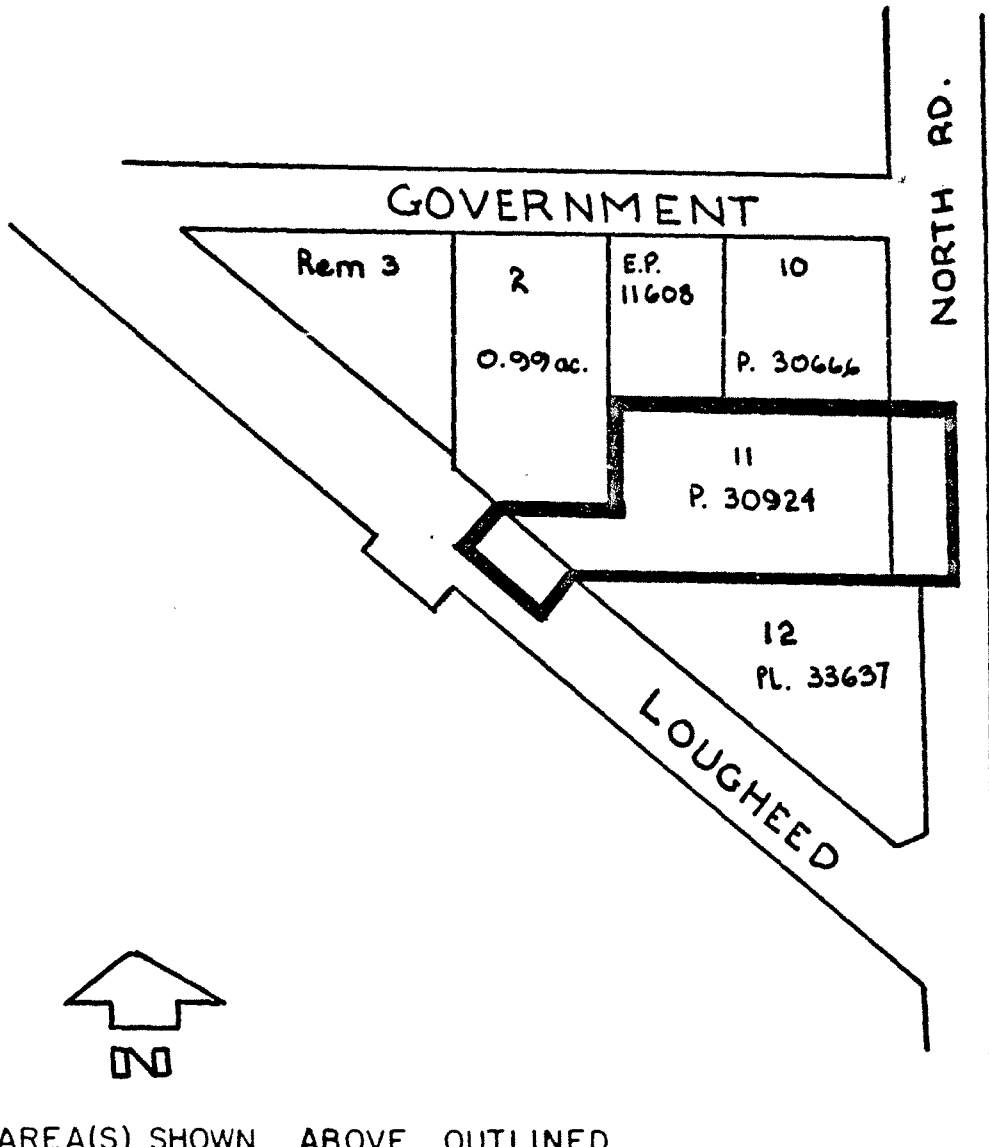
OFFICIAL ZONING MAP

NO RZ 358

BY-LAW NO. 5841 BEING A BY-LAW TO AMEND BY-LAW
 NO. 4742 BEING THE BURNABY ZONING BY-LAW, 1965

PROPERTY REZONED TO DRIVE-IN RESTAURANT DISTRICT (C7)

Legal: Lot 11, D.L. 2, Plan 30924



THE AREA(S) SHOWN ABOVE OUTLINED
 IN BLACK (—) IS (ARE) REZONED:

From: Service Commercial District (C4)

To: Drive-In Restaurant District (C7)

PLANNING DEPARTMENT	
SCALE	1 : 200
DRAWN	GP
DATE	FEB 17 1971

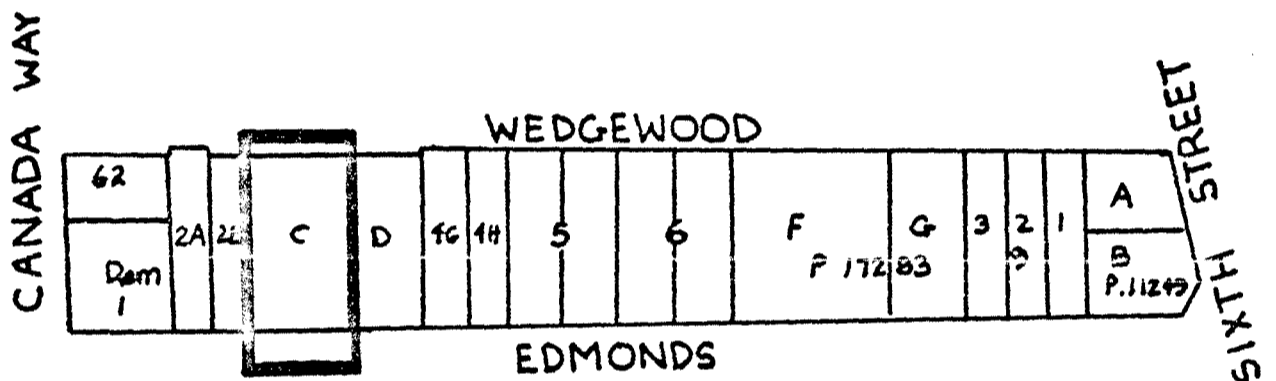
CORPORATION OF THE DISTRICT OF BURNABY

OFFICIAL ZONING MAP

NO RZ 359

BY-LAW NO. 5841 BEING A BY-LAW TO AMEND BY-LAW
 NO. 4742 BEING THE BURNABY ZONING BY-LAW, 1965

PROPERTY REZONED TO DRIVE-IN RESTAURANT DISTRICT (C7)



THE AREA(S) SHOWN ABOVE OUTLINED
 IN BLACK (—) IS (ARE) REZONED:

From: Community Commercial District (C2)

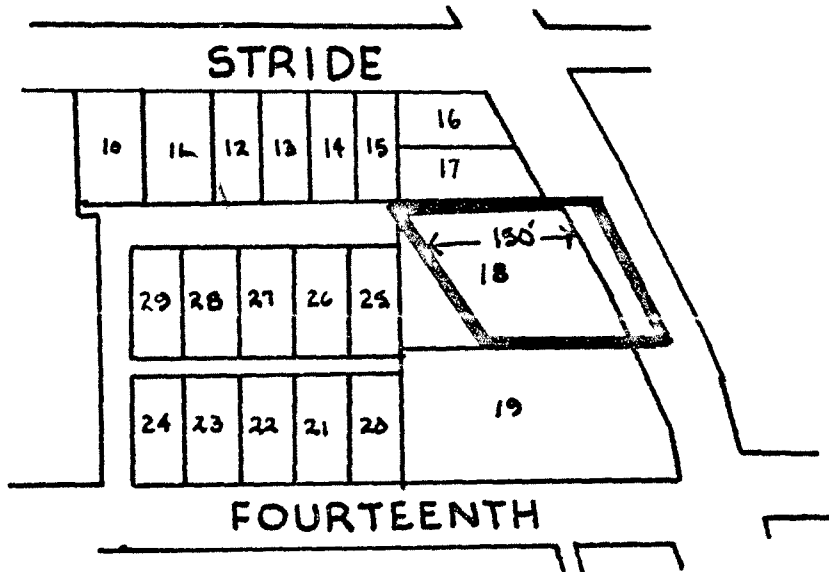
To: Drive-In Restaurant District (C7)

PLANNING DEPARTMENT		CORPORATION OF THE DISTRICT OF BURNABY	
SCALE	1:200	OFFICIAL ZONING MAP	
DRAWN	GP		
DATE	FEB. 16, 71		
		NO RZ 360	

BY-LAW NO. 5841 BEING A BY-LAW TO AMEND BY-LAW NO. 4742 BEING THE BURNABY ZONING BY-LAW, 1965

PROPERTY REZONED TO DRIVE-IN RESTAURANT DISTRICT (C7)

Legal: Portion of Lot 18, Block 2, D.L. 29, Plan 3035



THE AREA(S) SHOWN ABOVE OUTLINED IN BLACK (—) IS (ARE) REZONED:

From: Service Commercial District (C4)

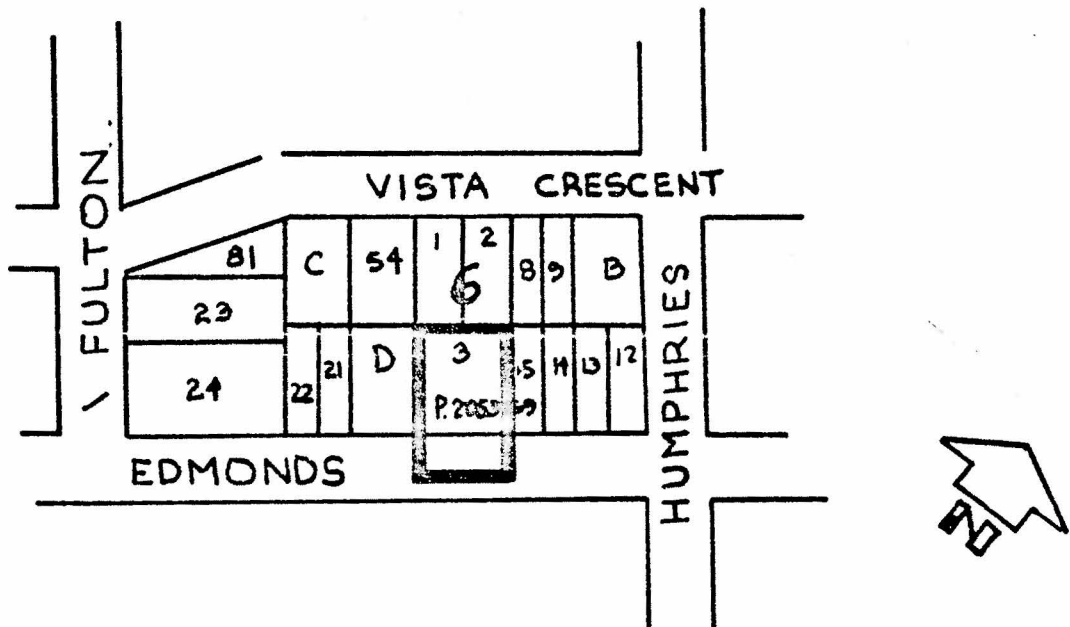
To: Drive-In Restaurant District (C7)

PLANNING DEPARTMENT		CORPORATION OF THE DISTRICT OF BURNABY	
SCALE	1:200	OFFICIAL ZONING MAP	
DRAWN	C.P.		
DATE	JAN 30/71		
		NO RZ 361	

BY-LAW NO. 5841 BEING A BY-LAW TO AMEND BY-LAW
 NO. 4742 BEING THE BURNABY ZONING BY-LAW, 1965

PROPERTY REZONED TO DRIVE-IN RESTAURANT DISTRICT (C7)

Legal: Lot 3, S.D. "A", Block 6, D.L. 30, Plan 20569



THE AREA(S) SHOWN ABOVE OUTLINED
 IN BLACK (—) IS (ARE) REZONED:

From: Service Commercial District (C4)

To: Drive-In Restaurant District (C7)

PLANNING DEPARTMENT	
SCALE	1:200
DRAWN	GP
DATE	FEB 16 71

CORPORATION OF THE DISTRICT OF BURNABY

OFFICIAL ZONING MAP

NO RZ 362

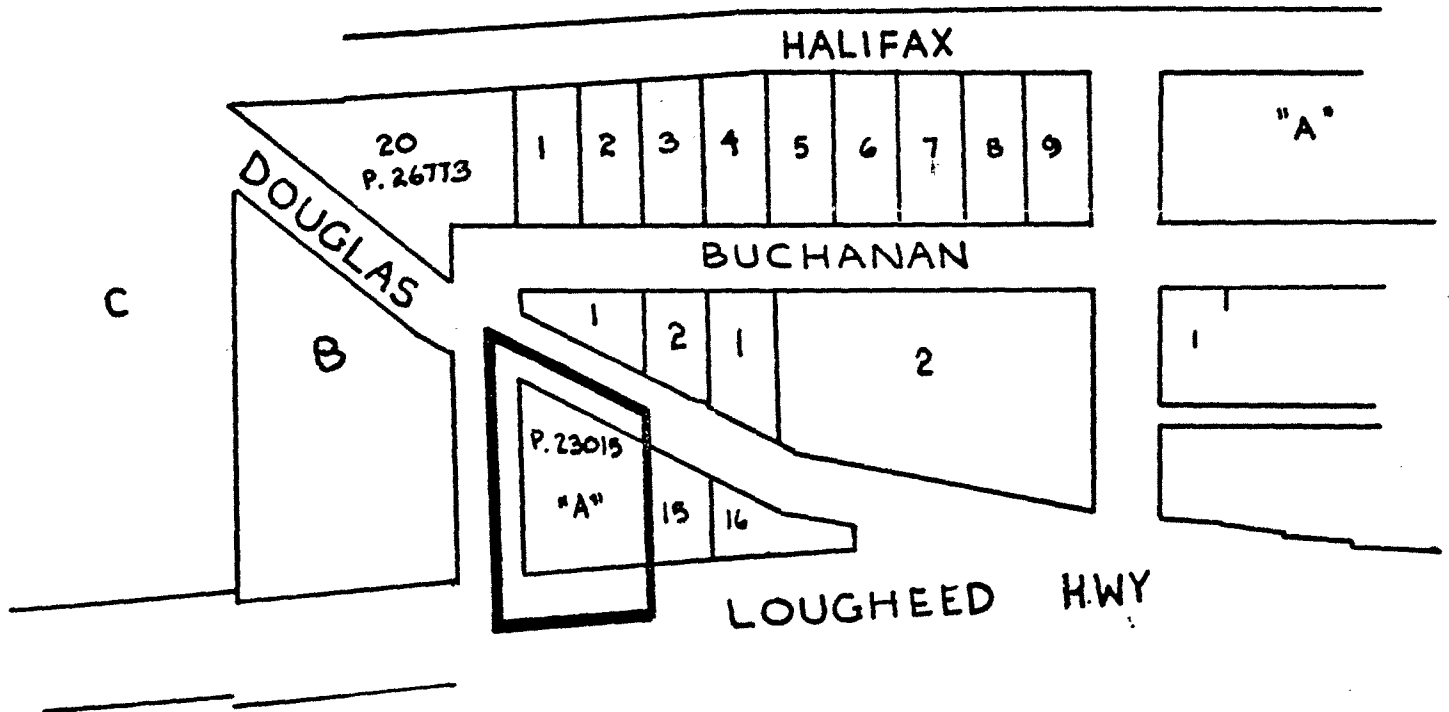
BY-LAW NO. 5841

BEING A BY-LAW TO AMEND BY-LAW

NO. 4742 BEING THE BURNABY ZONING BY-LAW, 1965

PROPERTY REZONED TO DRIVE-IN RESTAURANT DISTRICT (C7)

Legal: Lot A, Block 4, D.L. 119E, Plan 23015



THE AREA(S) SHOWN ABOVE OUTLINED IN BLACK (—) IS (ARE) REZONED:

From: General Commercial District (C3)
To: Drive-In Restaurant District (C7)

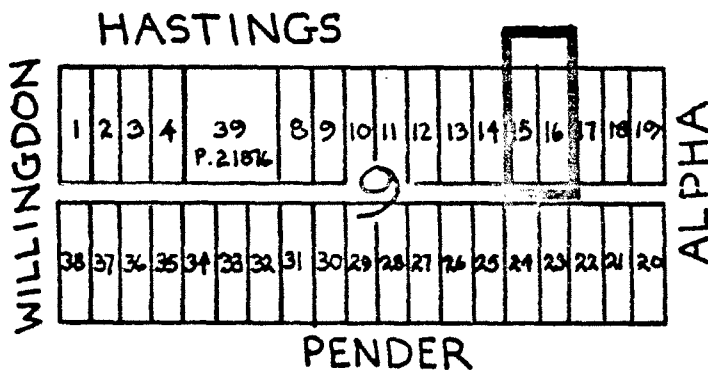


PLANNING DEPARTMENT		CORPORATION OF THE DISTRICT OF BURNABY	
SCALE	1:200	OFFICIAL ZONING MAP	
DRAWN	GP		
DATE	FEB 7/71		
		NO RZ 363	

BY-LAW NO. 5841 BEING A BY-LAW TO AMEND BY-LAW
 NO. 4742 BEING THE BURNABY ZONING BY-LAW, 1965

PROPERTY REZONED TO DRIVE-IN RESTAURANT DISTRICT (C7)

Legal: Lots 15 and 16, Except N. 20', Block 9,
 D.L. 122, Plan 1308



THE AREA(S) SHOWN ABOVE OUTLINED
 IN BLACK (—) IS (ARE) REZONED:

From: Service Commercial District (C4)

To: Drive-In Restaurant District (C7)

PLANNING DEPARTMENT		CORPORATION OF THE DISTRICT OF BURNABY	
SCALE	1:200	OFFICIAL ZONING MAP	
DRAWN	GP		
DATE	FEB 17 1971		
		NO RZ 364	