

THE CORPORATION OF THE DISTRICT OF BURNABY

BY-LAW NO. 5839

A BY-LAW to amend By-Law No. 4742, being  
"Burnaby Zoning By-Law 1965"

WHEREAS application for rezoning has ~~been~~ been made to the Council.

AND WHEREAS the Council has held a public hearing thereon after duly giving notice of the time and place of such hearing.

NOW THEREFORE the Council of The Corporation of the District of Burnaby ENACTS as follows:

1. This By-Law may be cited as "BURNABY ZONING BY-LAW 1965, AMENDMENT BY-LAW NO. 1, 1971".

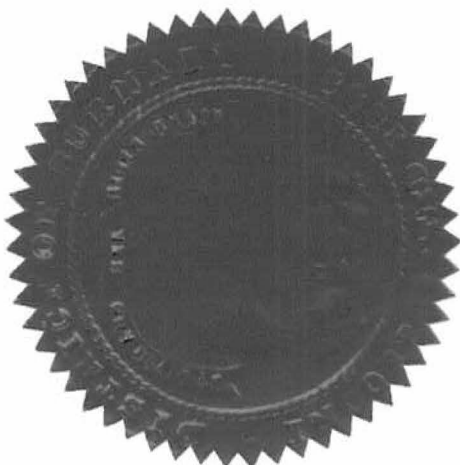
2. The Map (hereinafter called "Map "A"") attached to and forming an integral part of By-Law No. 4742, being "Burnaby Zoning By-Law 1965", and designated as the Official Zoning Map of The Corporation of the District of Burnaby, is hereby amended according to the Map (hereinafter called "Map "B""), marginally numbered R.Z. 343 ; annexed to this By-Law, and in accordance with the explanatory legend, notations, references and boundaries designated, described, delimited and specified in particularity shown upon said Map "B"; and the various boundaries and districts shown upon said Map "B" respectively are an amendment of and in substitution for the respective districts, designated and marked on said Map "A" insofar as the same are changed, modified or varied thereby, and the said Map "A" shall be deemed to be and is hereby declared to be amended accordingly and the said Map "B" is hereby declared to be and shall form an integral part of said Map "A", as if originally incorporated therein, and shall be interpreted accordingly.

Read a first time this 25th day of January, 19 71.

Read a second time this 25th day of January, 19 71.

Read a third time this 25th day of January, 19 71.

Reconsidered and adopted by an affirmative vote of at least two-thirds of all the members of the Council this 1st day of February, 1971.



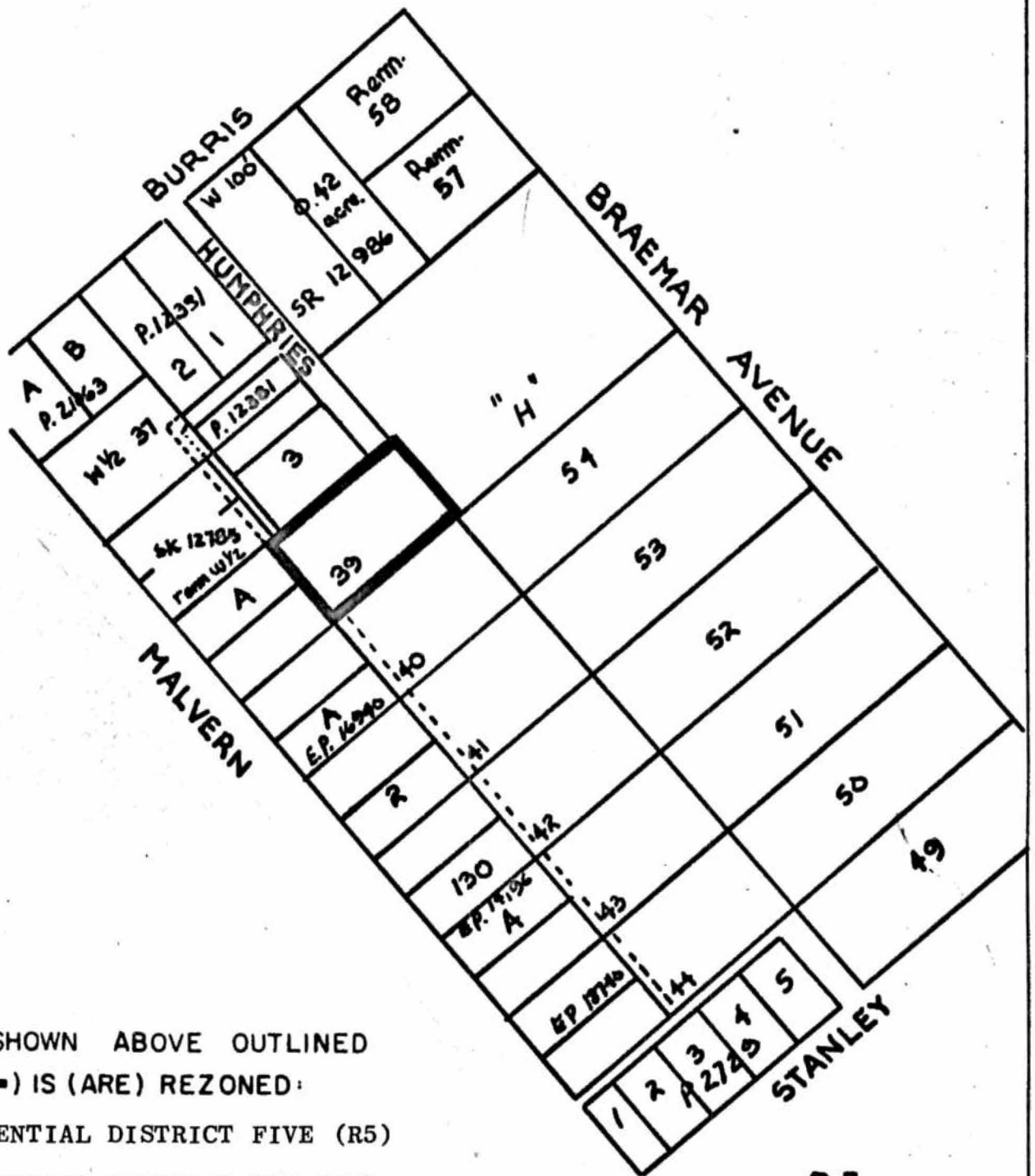
*Robert W. Pittman*  
MAYOR  
*J. Shaw*  
CLERK

BY-LAW NO. 5839 BEING A BY-LAW TO AMEND BY-LAW  
 NO. 4742 BEING THE BURNABY ZONING BY-LAW, 1965

PROPERTY REZONED TO RESIDENTIAL DISTRICT TWO (R2)

MAP "B"

Legal: Rear and easterly 200 foot portion of  
 Block 39, except Pcl. "A", Expl. Pl. 16876  
 D.L. 86, Plan 1203



THE AREA(S) SHOWN ABOVE OUTLINED  
 IN BLACK (—) IS (ARE) REZONED:  
 From: RESIDENTIAL DISTRICT FIVE (R5)  
 To: RESIDENTIAL DISTRICT TWO (R2)

