

THE CORPORATION OF THE DISTRICT OF BURNABY

BY-LAW NO. 5810

A BY-LAW to amend By-Law No. 4742, being
"Burnaby Zoning By-Law 1965"

WHEREAS application for rezoning has/~~have~~ been made to the Council.

AND WHEREAS the Council has held a public hearing thereon after
duly giving notice of the time and place of such hearing.

NOW THEREFORE the Council of The Corporation of the District of
Burnaby ENACTS as follows:

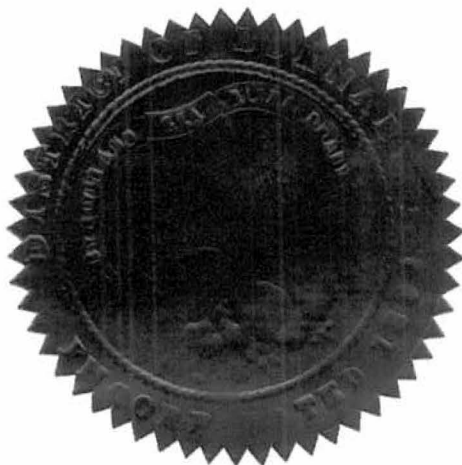
1. This By-Law may be cited as "BURNABY ZONING BY-LAW 1965, AMENDMENT
BY-LAW NO. 55, 1970".
2. The Map (hereinafter called "Map "A'") attached to and forming an
integral part of By-Law No. 4742, being "Burnaby Zoning By-Law 1965", and
designated as the Official Zoning Map of The Corporation of the District of
Burnaby, is hereby amended according to the Map (hereinafter called "Map "B'"),
marginally numbered R.Z.342, annexed to this By-Law, and in accordance with
the explanatory legend, notations, references and boundaries designated, des-
cribed, delimited and specified in particularity shown upon said Map "B"; and
the various boundaries and districts shown upon said Map "B" respectively are
an amendment of and in substitution for the respective districts, designated
and marked on said Map "A" insofar as the same are changed, modified or varied
thereby, and the said Map "A" shall be deemed to be and is hereby declared to
be amended accordingly and the said Map "B" is hereby declared to be and shall
form an integral part of said Map "A", as if originally incorporated therein,
and shall be interpreted accordingly.

Read a first time this 23rd day of November 19 70.

Read a second time this 23rd day of November 19 70.

Read a third time this 14th day of December 19 70

Reconsidered and adopted by an affirmative vote of at least two-
thirds of all the members of the Council this 11th day of January 19 71.



Robert H. Patten
MAYOR
J. Shaw
CLERK

BY-LAW NO. 5810 BEING A BY-LAW TO AMEND BY-LAW
NO. 4742 BEING THE BURNABY ZONING BY-LAW, 1965

PROPERTY REZONED TO RESIDENTIAL DISTRICT ONE (R1)

MAP "B"

Legal:

The rear and easterly 200' portions of lots:

Block 40 except Expl. Plan 16940, D.L. 86, Plan 1203

Lot 1, D.L. 86, Plan 23399

Block 42 except Plan 24296 and except Parcel "A", Expl. Pl.
22819, D.L. 86, Plan 1203

Block 43 except Parcel "A", Expl. Plan 14196, D.L. 86, Plan 1203

Block 44 except Expl. Plan. 13748, D.L. 86, Plan 1203

The Southerly 41.4 feet of Lot 246, D.L. 86, Plan. 36916

THE AREA(S) SHOWN ABOVE OUTLINED
IN BLACK (—) IS (ARE) REZONED:

From: Residential District Five (R5)

To: Residential District One (R1)

PLANNING
DEPARTMENT

CORPORATION OF THE DISTRICT OF BURNABY

SCALE

DRAWN

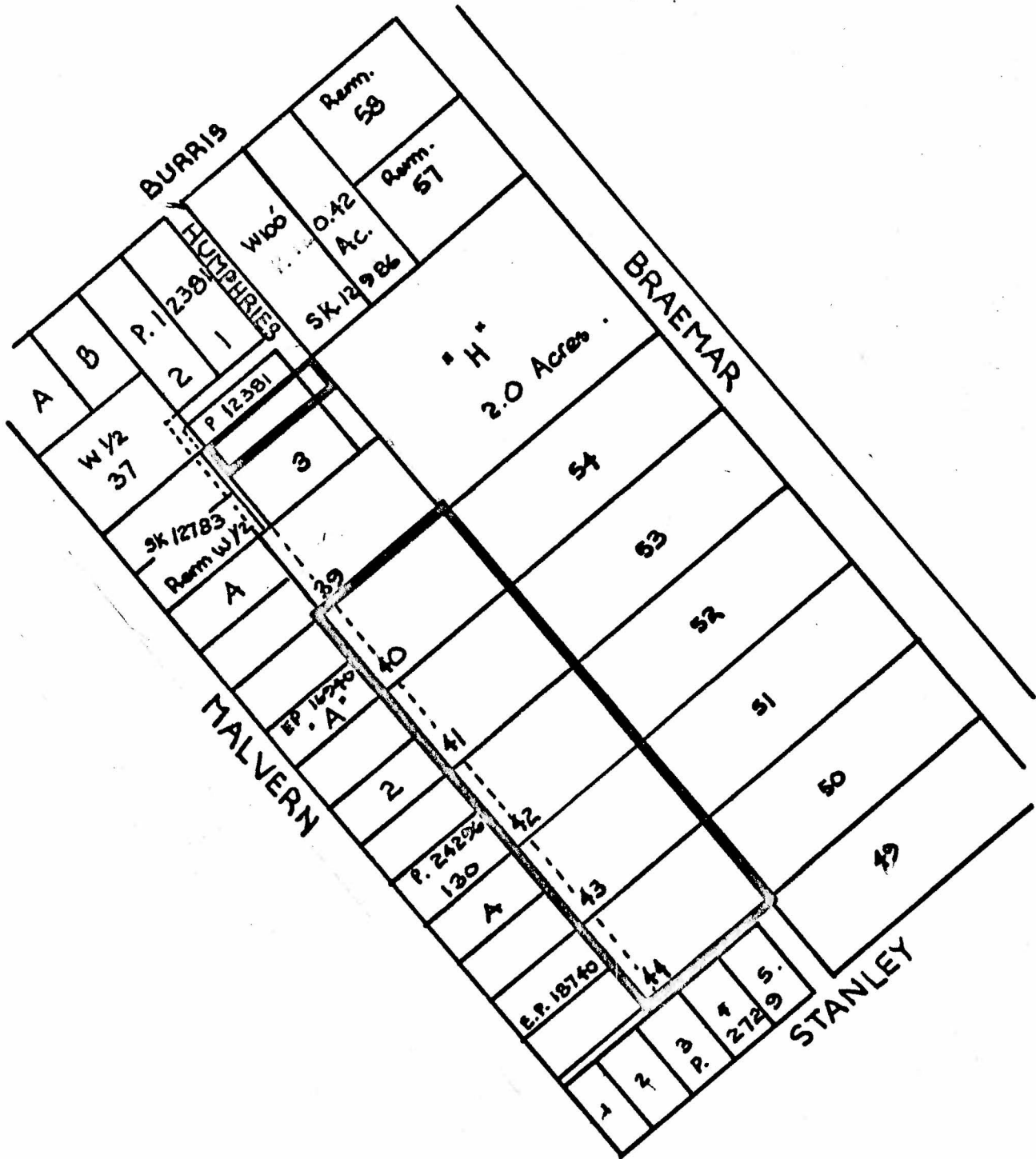
DATE

OFFICIAL ZONING MAP

NO R Z

BY-LAW NO. 5810 BEING A BY-LAW TO AMEND BY-LAW
 NO. 4742 BEING THE BURNABY ZONING BY-LAW, 1965

PROPERTY REZONED TO RESIDENTIAL DISTRICT ONE (R1)



THE AREA(S) SHOWN ABOVE OUTLINED
 IN BLACK (—) IS (ARE) REZONED:

From: Residential District Five (R5)

To: Residential District One (R1)

PLANNING
 DEPARTMENT

SCALE 1:200

DRAWN GP

DATE JAN 1971

CORPORATION OF THE DISTRICT OF BURNABY

OFFICIAL ZONING MAP