

THE CORPORATION OF THE DISTRICT OF BURNABY

BY-LAW NO. 5785

A BY-LAW to amend By-Law No. 4742, being
"Burnaby Zoning By-Law 1965"

WHEREAS application for rezoning has/~~been~~ been made to the Council.

AND WHEREAS the Council has held a public hearing thereon after
duly giving notice of the time and place of such hearing.

NOW THEREFORE the Council of The Corporation of the District of
Burnaby ENACTS as follows:

1. This By-Law may be cited as "BURNABY ZONING BY-LAW 1965, AMENDMENT
BY-LAW NO. 47, 1970".
2. The Map (hereinafter called "Map "A"") attached to and forming an
integral part of By-Law No. 4742, being "Burnaby Zoning By-Law 1965", and
designated as the Official Zoning Map of The Corporation of the District of
Burnaby, is hereby amended according to the Map (hereinafter called "Map "B""),
marginally numbered R.Z. 407, annexed to this By-Law, and in accordance with
the explanatory legend, notations, references and boundaries designated, des-
cribed, delimited and specified in particularity shown upon said Map "B"; and
the various boundaries and districts shown upon said Map "B" respectively are
an amendment of and in substitution for the respective districts, designated
and marked on said Map "A" insofar as the same are changed, modified or varied
thereby, and the said Map "A" shall be deemed to be and is hereby declared to
be amended accordingly and the said Map "B" is hereby declared to be and shall
form an integral part of said Map "A", as if originally incorporated therein,
and shall be interpreted accordingly.

Read a first time this 26th day of October, 19 70.

Read a second time this 26th day of October, 19 70.

Read a third time this 1st day of February, 19 71.

Reconsidered and adopted by an affirmative vote of at least two-
thirds of all the members of the Council this 7th day of February 19 72.



Robert M. Rutledge
MAYOR

J. H. H. H.
CLERK

BY-LAW NO. 5785 BEING A BY-LAW TO AMEND BY-LAW
 NO. 4742 BEING THE BURNABY ZONING BY-LAW, 1965

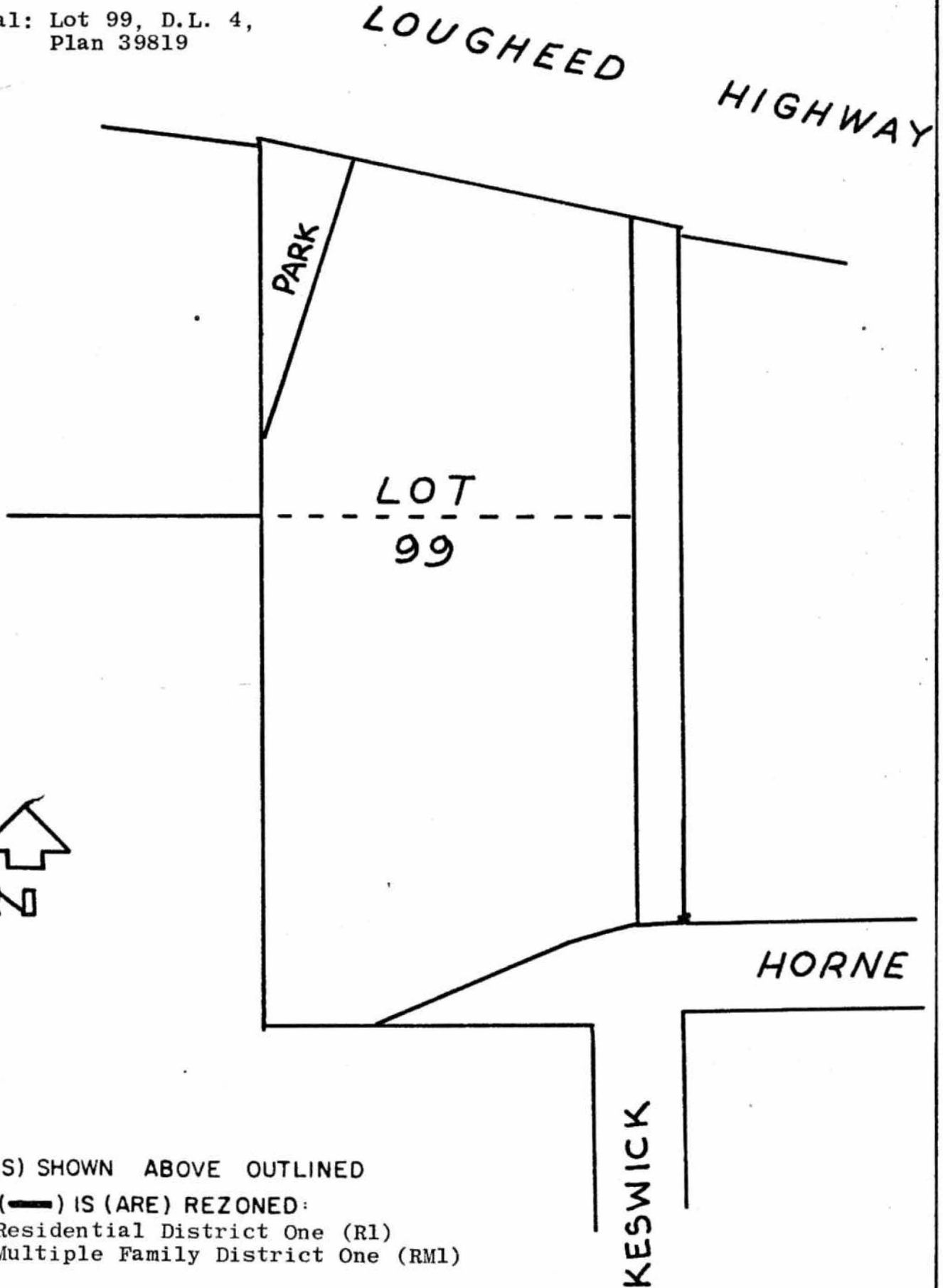
PROPERTY REZONED TO Multiple Family District One (RM1)

Old Legal: a) Parcel "A", Ref. Plan 4157, Pt. S. of Plan 4829
 Exc. Parcel 1 Expl. Plan 12354, Blocks 6/7, D.L. 4,
 Plan 845

MAP "B"

b) Lot 3, Parcel 1, Sk. 11653, Block 6, D.L. 4, Plan 845

New Legal: Lot 99, D.L. 4,
 Plan 39819



THE AREA(S) SHOWN ABOVE OUTLINED
 IN BLACK (—) IS (ARE) REZONED:
 FROM: Residential District One (R1)
 TO: Multiple Family District One (RM1)

PLANNING DEPARTMENT		CORPORATION OF THE DISTRICT OF BURNABY	
SCALE	1:100	OFFICIAL ZONING MAP	
DRAWN	GP		
DATE	FEB 10 72		
		NO RZ 407	