

THE CORPORATION OF THE DISTRICT OF BURNABY

BY-LAW NO. 5756

A BY-LAW to amend By-Law No. 4742, being
"Burnaby Zoning By-Law 1965".

WHEREAS application for rezoning has been made to the
Council.

AND WHEREAS the Council has held a public hearing thereon
after duly giving notice of the time and place of such hearing.

NOW THEREFORE the Council of The Corporation of the
District of Burnaby ENACTS as follows:

1. This By-law may be cited as "BURNABY ZONING BY-LAW 1965,
AMENDMENT BY-LAW NO. 43, 1970".
2. The Map (hereinafter called "Map "A'") attached to and
forming an integral part of By-Law No. 4742, being "Burnaby Zoning By-
Law 1965", and designated as the Official Zoning Map of The Corporation
of the District of Burnaby, is hereby amended according to the Map
(hereinafter called "Map "B'"), marginally numbered R.Z. 331, annexed
to this By-Law, and in accordance with the explanatory legend, notations,
references and boundaries designated, described, delimited and specified
in particularity shown upon said Map "B"; and the various boundaries and
districts shown upon said Map "B" respectively are an amendment of and
in substitution for the respective districts, designated and marked on
said Map "A" insofar as the same are changed, modified or varied thereby,
and the said Map "A" shall be deemed to be and is hereby declared to be
amended accordingly and the said Map "B" is hereby declared to be and
shall form an integral part of said Map "A", as if originally incorporated
therein and shall be interpreted accordingly.
3. The Comprehensive Development Plan entitled "Day Care
Centre, Lake City East, Burnaby, B. C.", prepared by Dawson Develop-
ments Limited and Justice & Webb Landscape Architects, comprising

six sheets numbered G-1, deposited with and signed by the Municipal Clerk, is deemed to be attached to and form part of this By-law.

Read a first time this 24th day of August, 1970.

Read a second time this 24th day of August, 1970.

Read a third time this 8th day of September, 1970.

Reconsidered and adopted by an affirmative vote of at least two-thirds of all the members of the Council this 26th day of October, 1970.

Robert W. Rutledge
M A Y O R
J. Shaw
C L E R K

BY-LAW NO. 5756 BEING A BY-LAW TO AMEND BY-LAW
NO. 4742 BEING THE BURNABY ZONING BY-LAW, 1965

PROPERTY REZONED TO COMPREHENSIVE DEVELOPMENT
DISTRICT (CD)

Old Legal: South Westerly 10.92 acre portion of
Lot 67, D.L.'s 6/10/56/148, Plan 31569,
North westerly portions of Lot 69,
D.L. 4/6, Plan 31569 and Parcel I,
Ref. Pl. 22345, S.D. Parcel "A",
Block 17, D.L. 6, Plan 748 having a
combined area of 10.57 acres.

THE AREA(S) SHOWN ABOVE OUTLINED
IN BLACK (—) IS (ARE) REZONED:

From: Residential District Two (R2)
and General Industrial District (M3)

To: Comprehensive Development District (CD)

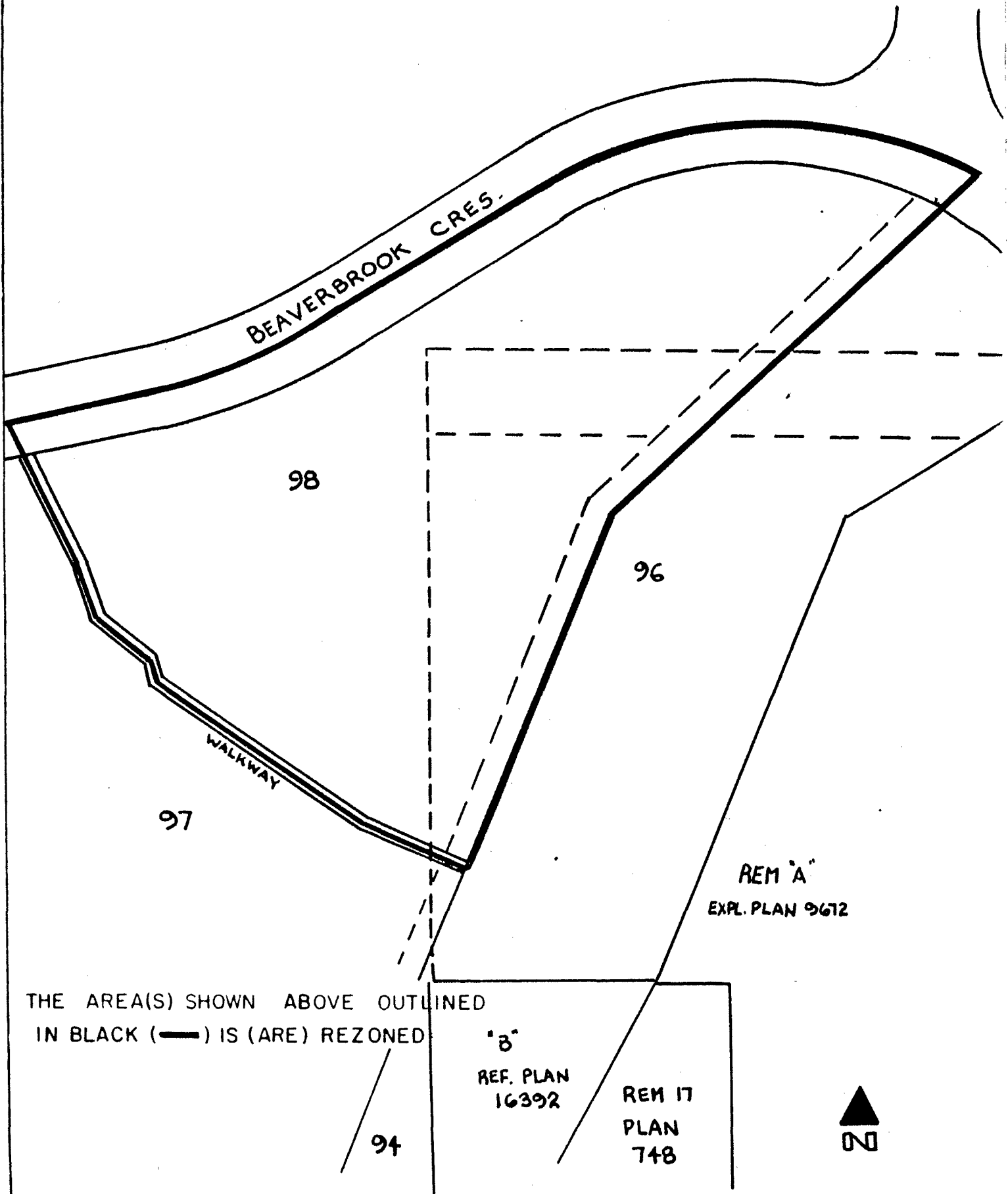
PLANNING DEPARTMENT	
SCALE	
DRAWN	lll
DATE	

CORPORATION OF THE DISTRICT OF BURNABY

OFFICIAL ZONING MAP

BY-LAW NO. 5756? BEING A BY-LAW TO AMEND BY-LAW NO. 4742 BEING THE BURNABY ZONING BY-LAW, 1965

PROPERTY REZONED TO



THE AREA(S) SHOWN ABOVE OUTLINED IN BLACK (—) IS (ARE) REZONED

PLANNING DEPARTMENT	
SCALE	1:100
DRAWN	GP
DATE	DEC 15 70

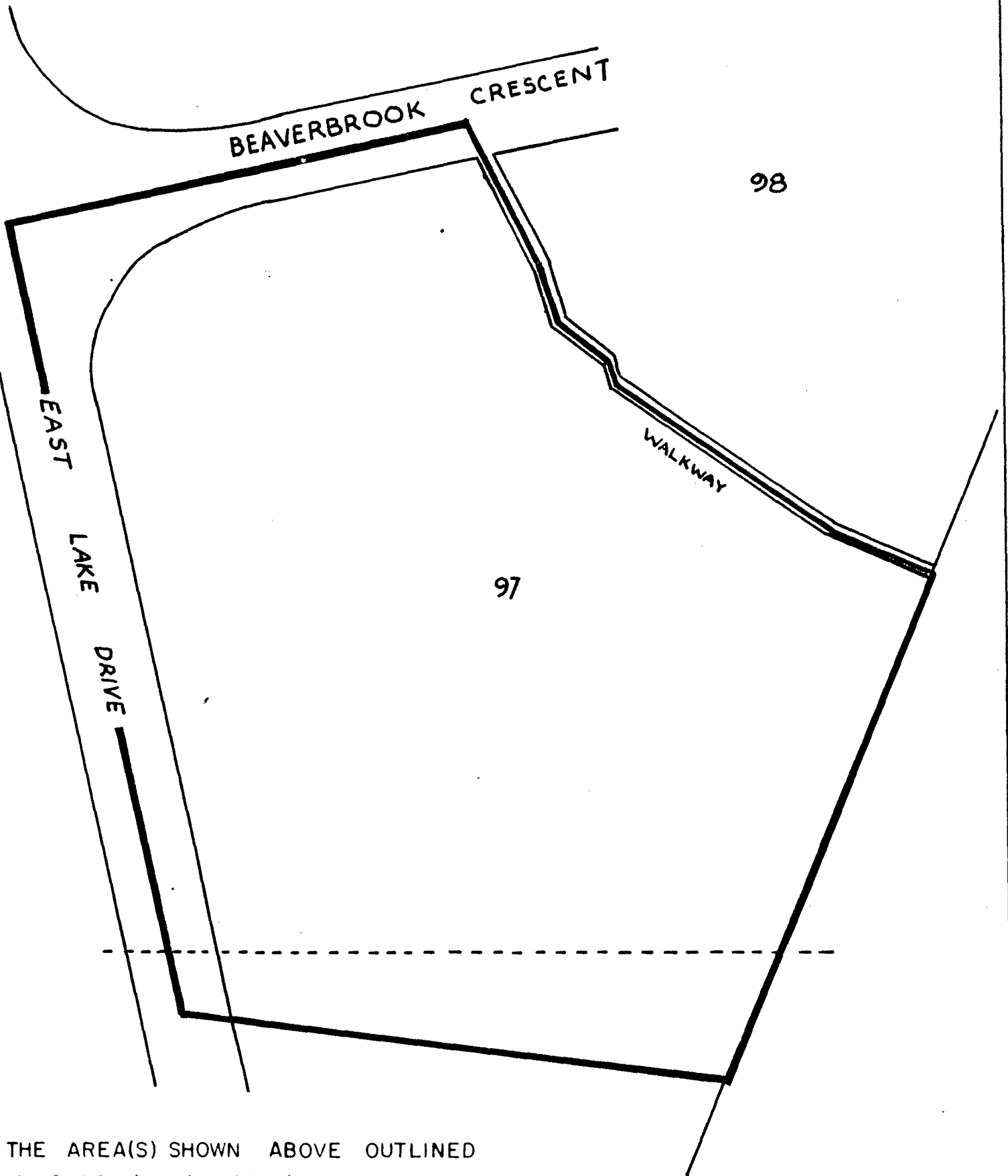
CORPORATION OF THE DISTRICT OF BURNABY

OFFICIAL ZONING MAP

NO RZ 331

BY-LAW NO. BEING A BY-LAW TO AMEND BY-LAW
 NO. 4742 BEING THE BURNABY ZONING BY-LAW, 1965

PROPERTY REZONED TO



THE AREA(S) SHOWN ABOVE OUTLINED
 IN BLACK (—) IS (ARE) REZONED:



PLANNING DEPARTMENT	
SCALE	1:100
DRAWN	GP
DATE	Dec 15/70

CORPORATION OF THE DISTRICT OF BURNABY

OFFICIAL ZONING MAP

NO R 7 331

BY-LAW NO. 5756 BEING A BY-LAW TO AMEND BY-LAW
NO. 4742 BEING THE BURNABY ZONING BY-LAW, 1965

PROPERTY REZONED TO COMPREHENSIVE DEVELOPMENT
DISTRICT (CD)

MAP "B"

Old Legal: South Westerly 10.92 acre portion of
Lot 67, D.L.'s 6/10/56/148, Plan 31569,
North westerly portions of Lot 69,
D.L. 4/6, Plan 31569 and Parcel 1,
Ref. Pl. 22345, S.D. Parcel "A",
Block 17, D.L. 6, Plan 748 having a
combined area of 10.57 acres.

THE AREA(S) SHOWN ABOVE OUTLINED
IN BLACK (—) IS (ARE) REZONED:

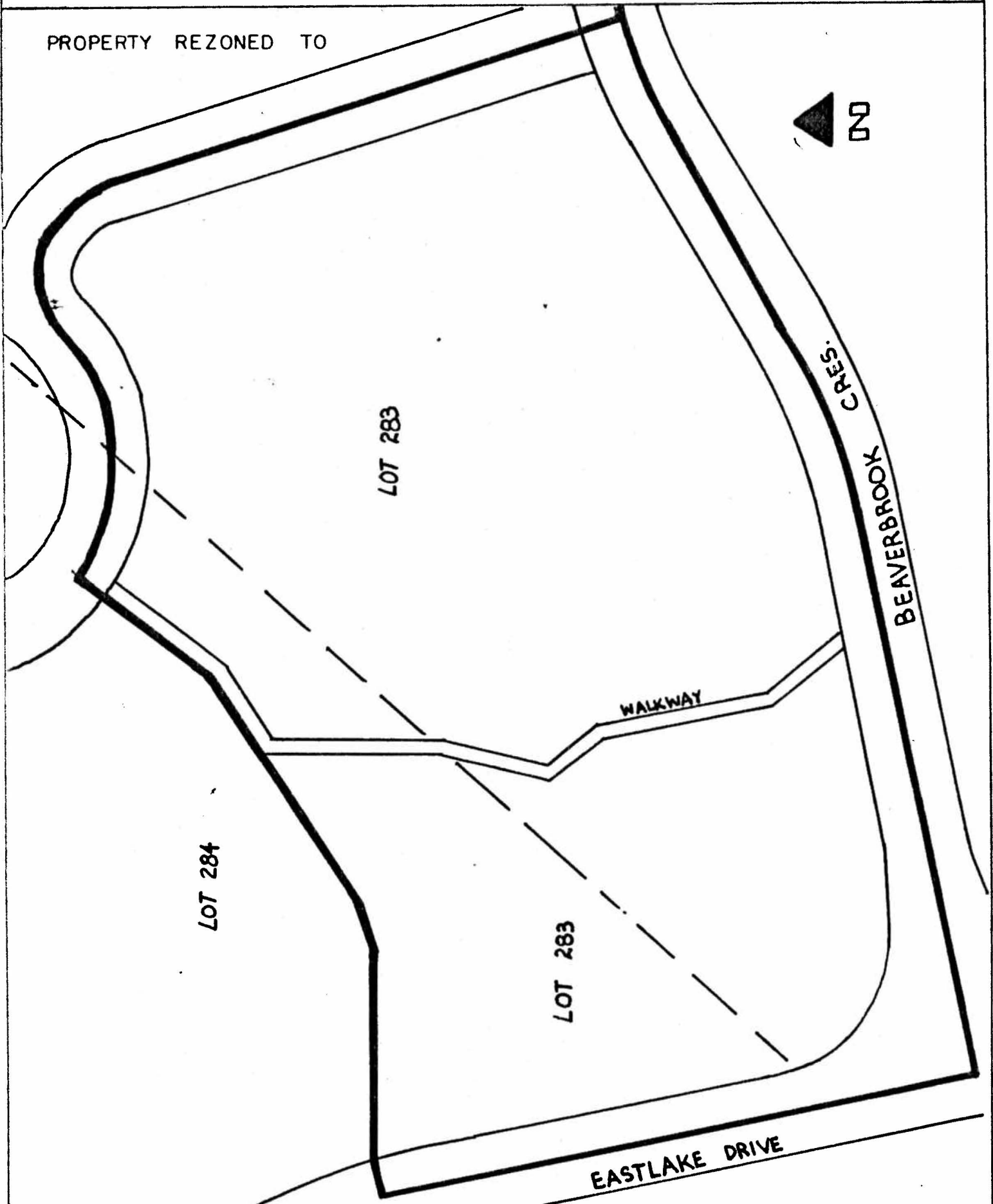
From: Residential District Two (R2)
and General Industrial District (M3)

To: Comprehensive Development District (CD)

PLANNING DEPARTMENT	CORPORATION OF THE DISTRICT OF BURNABY	
SCALE		OFFICIAL ZONING MAP
DRAWN	118	
DATE		
		NO RZ 331

BY-LAW NO. 5756 BEING A BY-LAW TO AMEND BY-LAW
 NO. 4742 BEING THE BURNABY ZONING BY-LAW, 1965

PROPERTY REZONED TO



THE AREA(S) SHOWN ABOVE OUTLINED
 IN BLACK (—) IS (ARE) REZONED:

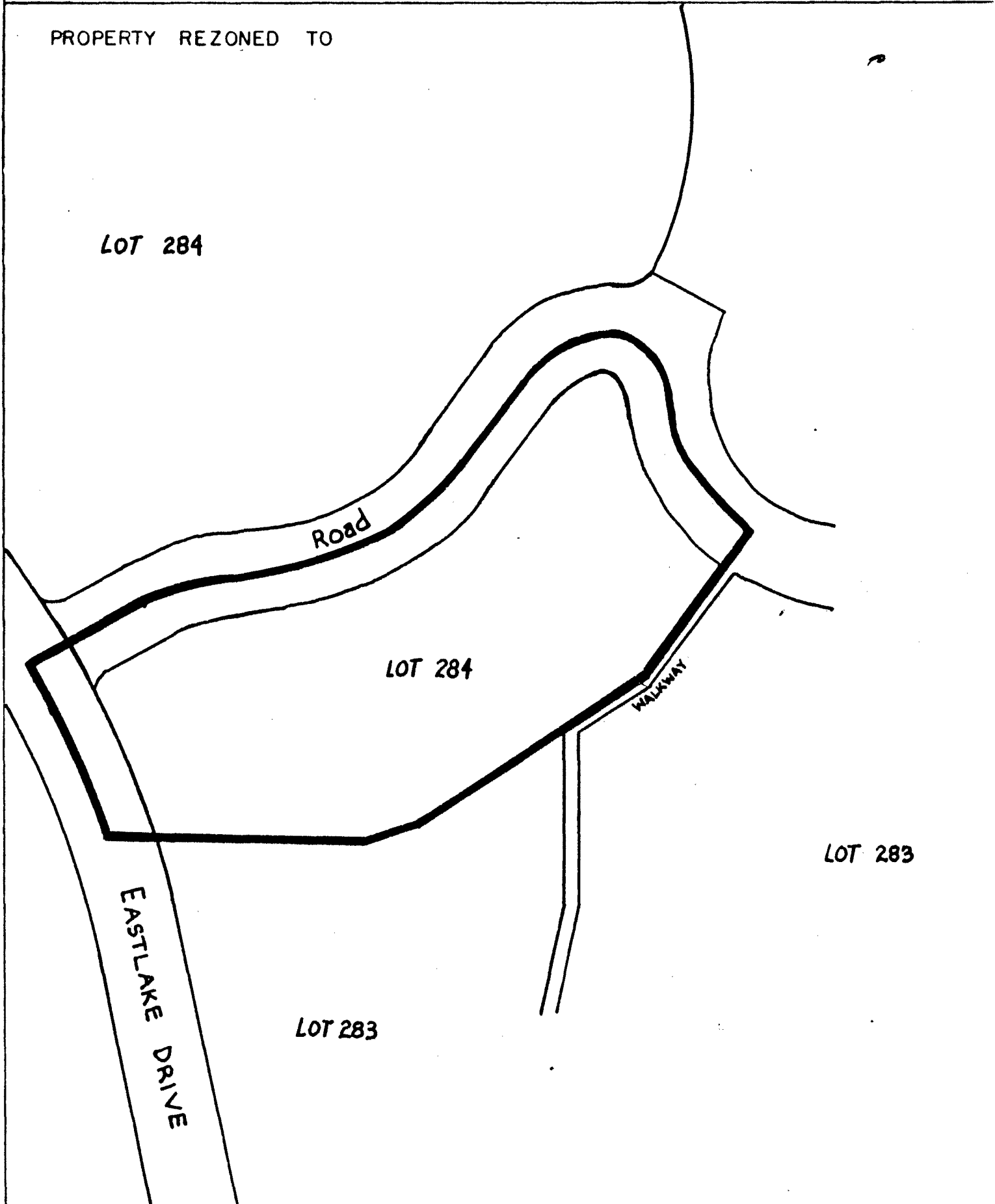
PLANNING DEPARTMENT	
SCALE	1:100
DRAWN	GP
DATE	DEC 16/70

CORPORATION OF THE DISTRICT OF BURNABY

OFFICIAL ZONING MAP

BY-LAW NO. 5756 BEING A BY-LAW TO AMEND BY-LAW NO. 4742 BEING THE BURNABY ZONING BY-LAW, 1965

PROPERTY REZONED TO



THE AREA(S) SHOWN ABOVE OUTLINED IN BLACK (—) IS (ARE) REZONED:



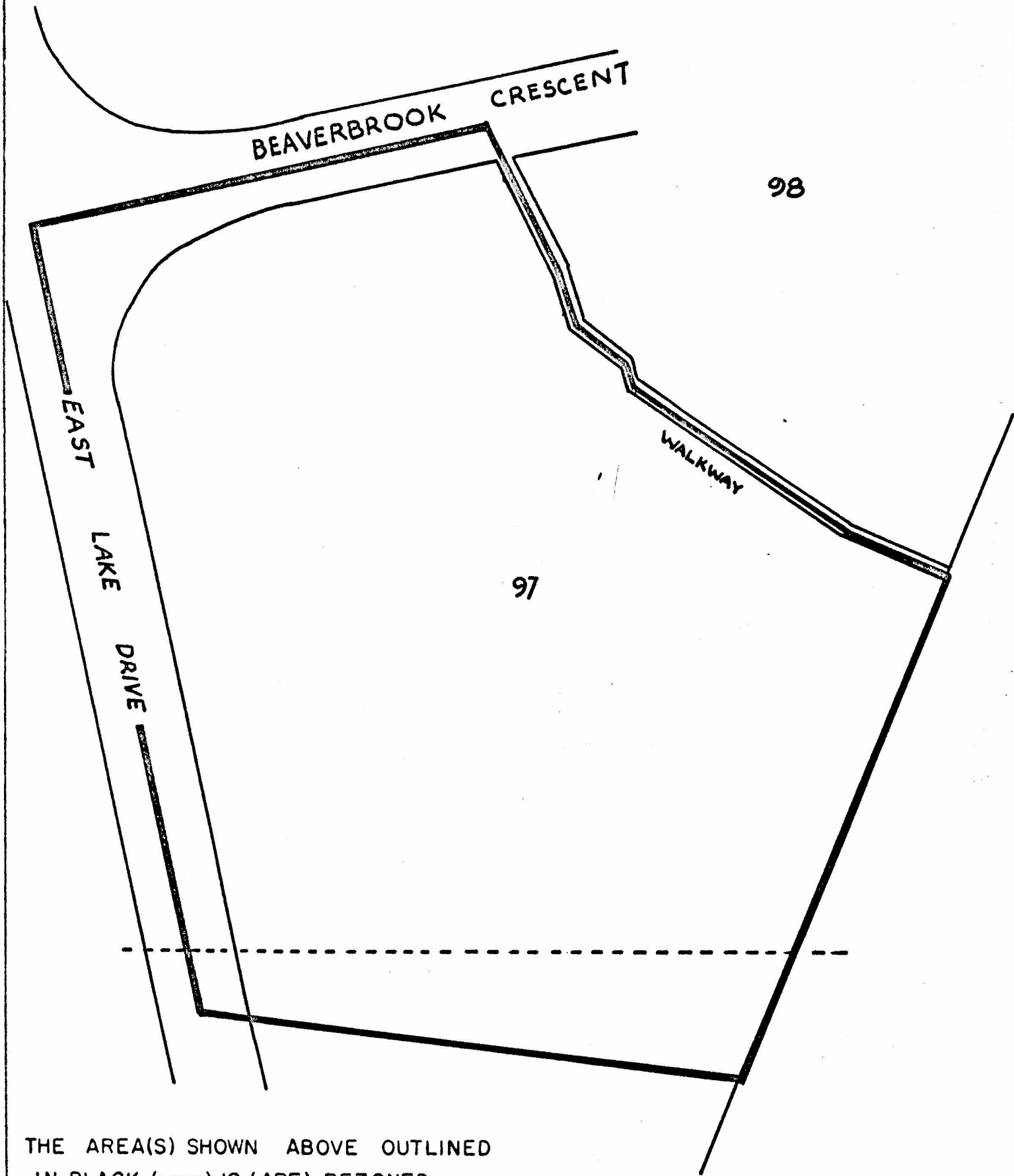
PLANNING DEPARTMENT	
SCALE	1:100
DRAWN	GP
DATE	Dec/16/70

CORPORATION OF THE DISTRICT OF BURNABY
OFFICIAL ZONING MAP

NO RZ 331

BY-LAW NO. BEING A BY-LAW TO AMEND BY-LAW
 NO. 4742 BEING THE BURNABY ZONING BY-LAW, 1965

PROPERTY REZONED TO



THE AREA(S) SHOWN ABOVE OUTLINED
 IN BLACK (—) IS (ARE) REZONED:



PLANNING DEPARTMENT	
SCALE	1:100
DRAWN	G.P.
DATE	DEC/15/70

CORPORATION OF THE DISTRICT OF BURNABY

OFFICIAL ZONING MAP

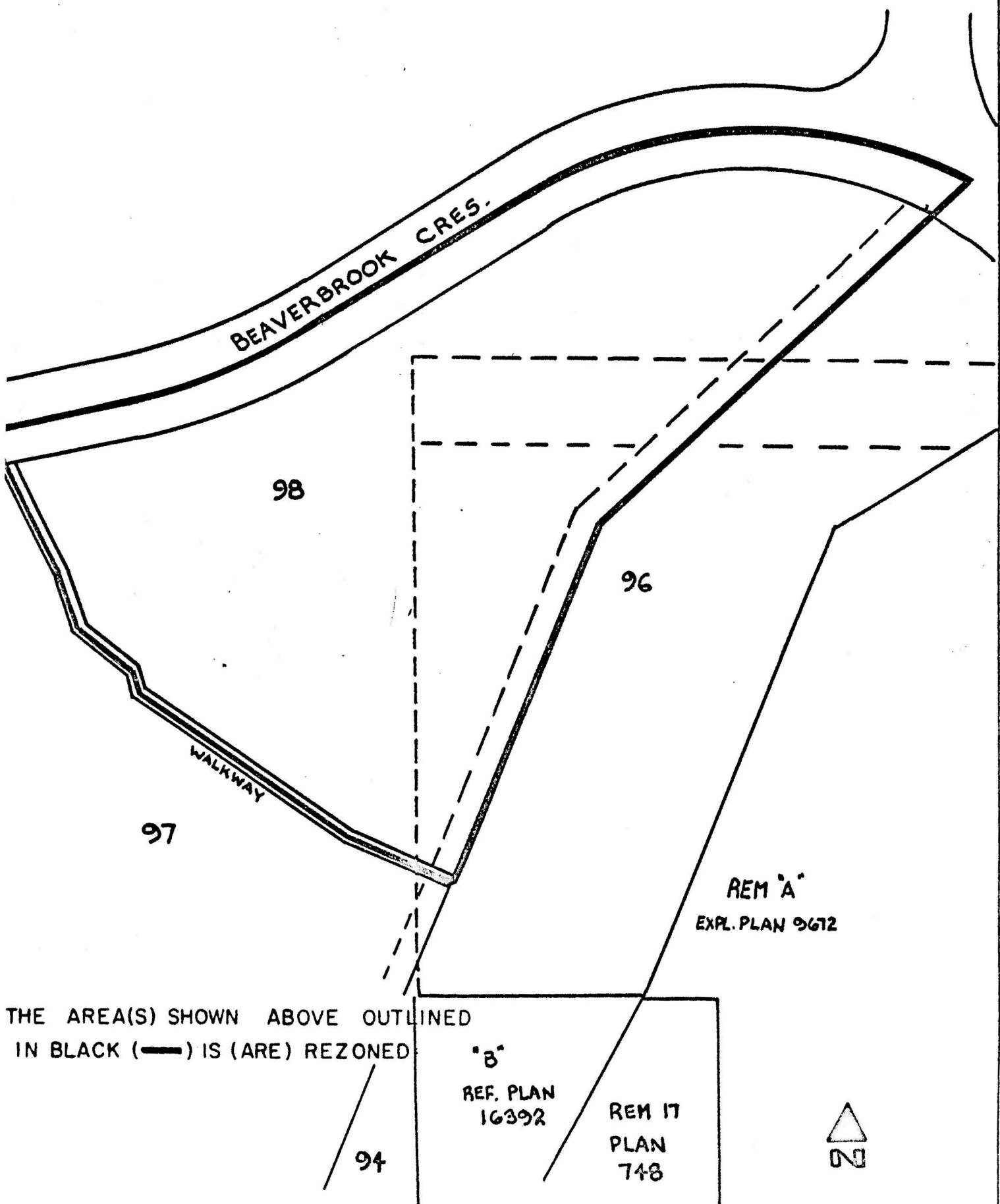
NO RZ. 331

BY-LAW NO.

BEING A BY-LAW TO AMEND BY-LAW

NO. 4742 BEING THE BURNABY ZONING BY-LAW, 1965

PROPERTY REZONED TO



THE AREA(S) SHOWN ABOVE OUTLINED IN BLACK (—) IS (ARE) REZONED

PLANNING DEPARTMENT		CORPORATION OF THE DISTRICT OF BURNABY	
SCALE	1:100	OFFICIAL ZONING MAP	
DRAWN	GP		
DATE	DEC 15 70		
		NO R7 331	