

THE CORPORATION OF THE DISTRICT OF BURNABY

BY-LAW NO. 5684

A BY-LAW to amend By-Law No. 4742, being
"Burnaby Zoning By-Law 1965".

WHEREAS application for rezoning has been made to the
Council.

AND WHEREAS the Council has held a public hearing thereon
after duly giving notice of the time and place of such hearing.

NOW THEREFORE the Council of The Corporation of the
District of Burnaby ENACTS as follows:

1. This By-law may be cited as "BURNABY ZONING BY-LAW 1965,
AMENDMENT BY-LAW NO. 13, 1970".
2. The Map (hereinafter called "Map "A"") attached to and
forming an integral part of By-Law No. 4742, being "Burnaby Zoning
By-Law 1965", and designated as the Official Zoning Map of The
Corporation of the District of Burnaby, is hereby amended according
to the Map (hereinafter called "Map "B""), marginally numbered
R.Z. 284, annexed to this By-Law, and in accordance with the explanatory
legend, notations, references and boundaries designated, described,
delimited and specified in particularity shown upon said Map "B";
and the various boundaries and districts shown upon said Map "B"
respectively are an amendment of and in substitution for the respective
districts, designated and marked on said Map "A" insofar as the same
are changed, modified or varied thereby, and the said Map "A" shall
be deemed to be and is hereby declared to be amended accordingly and
the said Map "B" is hereby declared to be and shall form an integral
part of said Map "A", as if originally incorporated therein and shall
be interpreted accordingly.
3. The Comprehensive Development Plan entitled "Apartment
Project Lougheed Highway Burnaby for Lougheed Village Holdings Ltd.",
prepared by R. Rapske, Architect, dated March 1971 and comprising
sheets A1 to A15 inclusive, and "Landscape Development for Apartment

Project Walnut Enterprises Ltd., Burnaby, B. C." (comprising three sheets) prepared by Justice & Webb Landscape Architects Ltd., deposited with and signed by the Municipal Clerk, is deemed to be attached to and form part of this By-law.

Read a first time this 27th day of April, 1970.

Read a second time this 27th day of April, 1970.

Read a third time this 15th day of March, 1971.

Reconsidered and adopted by an affirmative vote of at least two-thirds of all the members of the Council this 22nd day of March, 1971.



Robert W. Pitte
M A Y O R

J. Shaw
C L E R K

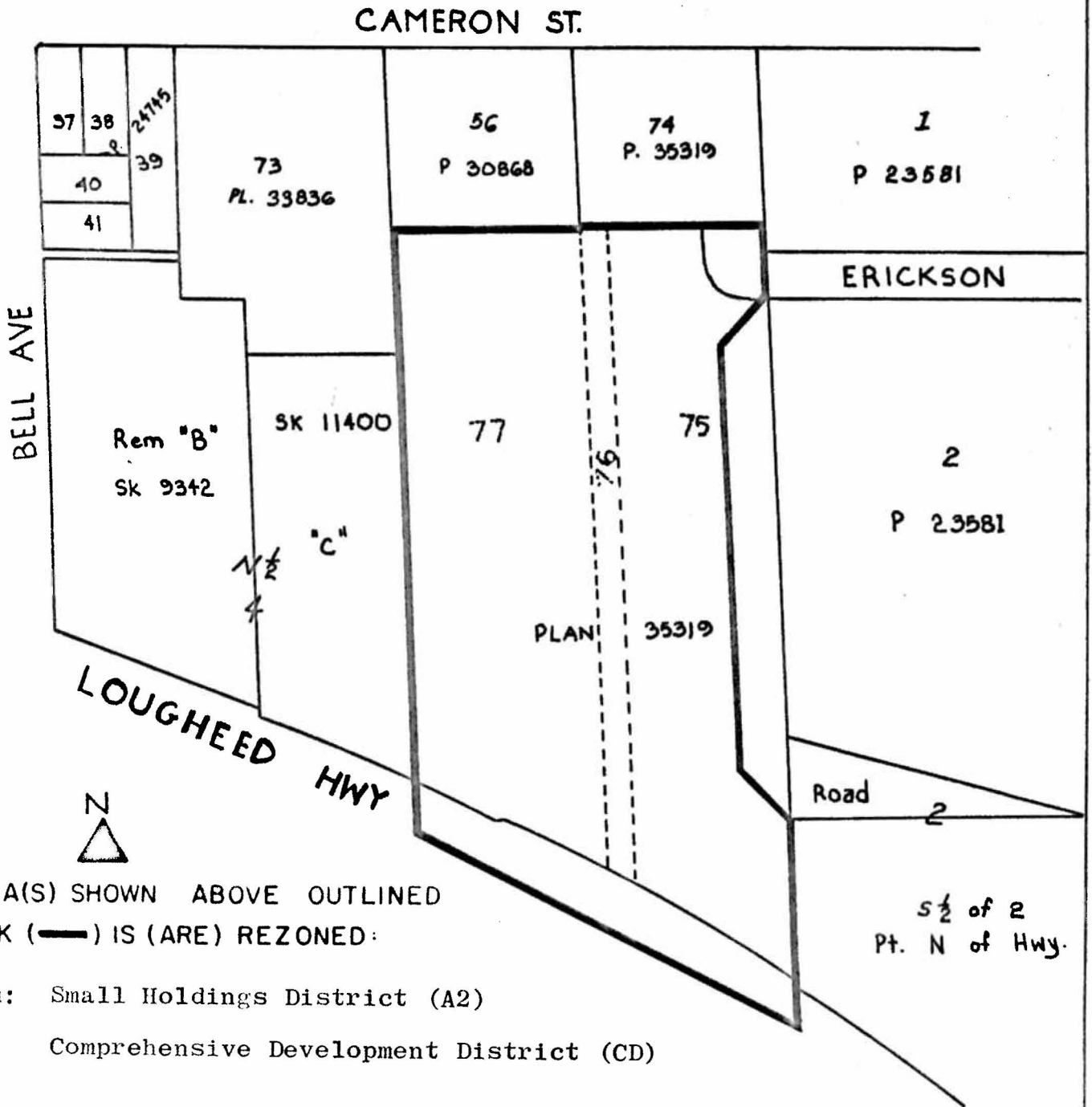
BY-LAW NO. 5684 BEING A BY-LAW TO AMEND BY-LAW
 NO. 4742 BEING THE BURNABY ZONING BY-LAW, 1965

PROPERTY REZONED TO COMPREHENSIVE DEVELOPMENT DISTRICT (CD)

MAP "B"

New Legal: D.L. 4, Lot 85, Group 1, Plan 38877, N.W.D.

Old Legal: D.L. 4, Lots 75, 76 and 77, Plan 35319



THE AREA(S) SHOWN ABOVE OUTLINED
 IN BLACK (—) IS (ARE) REZONED:

From: Small Holdings District (A2)

To: Comprehensive Development District (CD)

PLANNING DEPARTMENT	
SCALE	1" = 200'
DRAWN	GP
DATE	MARCH 23/70

CORPORATION OF THE DISTRICT OF BURNABY

OFFICIAL ZONING MAP

NO RZ 284