

THE CORPORATION OF THE DISTRICT OF BURNABY

BY-LAW NO. 5663

A BY-LAW to amend By-Law No. 4742, being  
"Burnaby Zoning By-Law 1965"

WHEREAS application for rezoning has ~~not~~ been made to the Council.

AND WHEREAS the Council has held a public hearing thereon after  
duly giving notice of the time and place of such hearing.

NOW THEREFORE the Council of The Corporation of the District of  
Burnaby ENACTS as follows:

1. This By-Law may be cited as "BURNABY ZONING BY-LAW 1965, AMENDMENT  
BY-LAW NO. 6, 1970".
2. The Map (hereinafter called "Map "A'") attached to and forming an  
integral part of By-Law No. 4742, being "Burnaby Zoning By-Law 1965", and  
designated as the Official Zoning Map of The Corporation of the District of  
Burnaby, is hereby amended according to the Map (hereinafter called "Map "B'"),  
marginally numbered R.Z. 292, annexed to this By-Law, and in accordance with  
the explanatory legend, notations, references and boundaries designated, des-  
cribed, delimited and specified in particularity shown upon said Map "B"; and  
the various boundaries and districts shown upon said Map "B" respectively are  
an amendment of and in substitution for the respective districts, designated  
and marked on said Map "A" insofar as the same are changed, modified or varied  
thereby, and the said Map "A" shall be deemed to be and is hereby declared to  
be amended accordingly and the said Map "B" is hereby declared to be and shall  
form an integral part of said Map "A", as if originally incorporated therein,  
and shall be interpreted accordingly.

Read a first time this 16th day of February, 1970.

Read a second time this 16th day of February, 1970.

Read a third time this 23rd day of February, 1970.

Reconsidered and adopted by an affirmative vote of at least two-  
thirds of all the members of the Council this 2nd day of March 1970.



*Robert W. Pitte*  
MAYOR

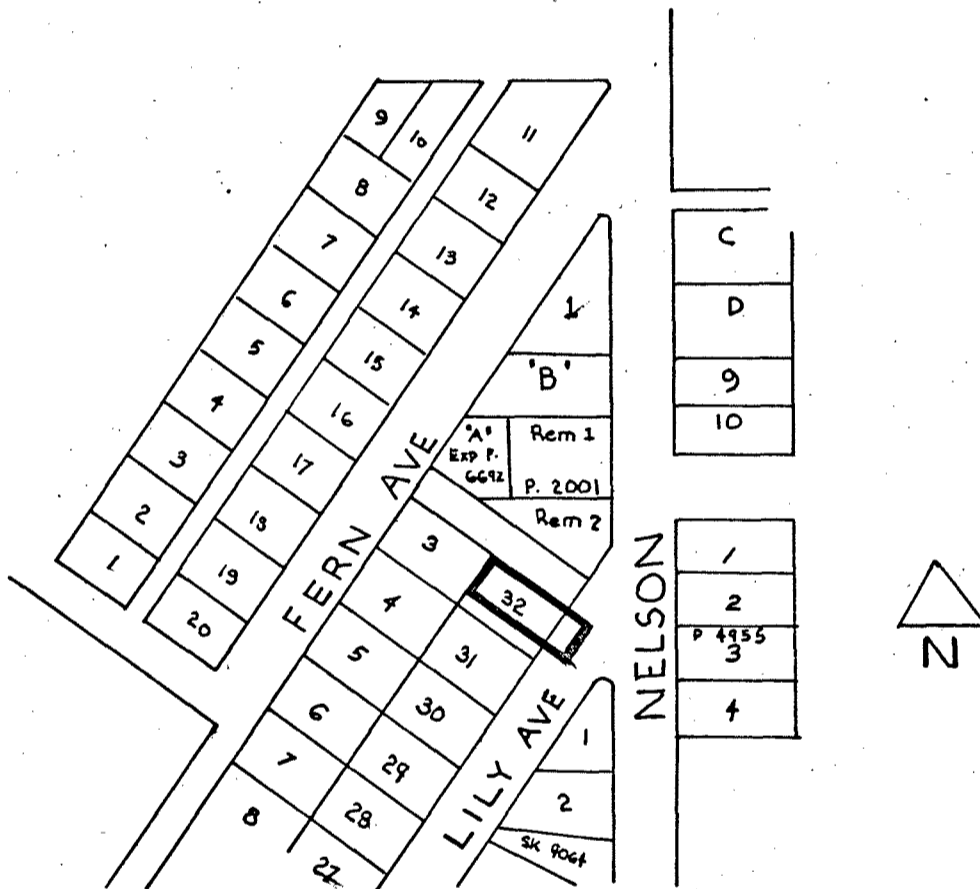
*J. Shaw*  
CLERK

BY-LAW NO. 5663 BEING A BY-LAW TO AMEND BY-LAW  
 NO. 4742 BEING THE BURNABY ZONING BY-LAW, 1965

PROPERTY REZONED TO COMMUNITY COMMERCIAL DISTRICT (C2)

MAP "B"

Legal: North 36.83 feet, Lot 32, Block 24,  
 D.L. 151/3, Plan 2001



THE AREA(S) SHOWN ABOVE OUTLINED  
 IN BLACK (—) IS (ARE) REZONED:

FROM RESIDENTIAL DISTRICT FIVE (R5)

TO COMMUNITY COMMERCIAL DISTRICT (C2)

PLANNING DEPARTMENT	
SCALE	1" = 200'
DRAWN	GP
DATE	

CORPORATION OF THE DISTRICT OF BURNABY

OFFICIAL ZONING MAP