

THE CORPORATION OF THE DISTRICT OF BURNABY

BY-LAW NO. 5631

A BY-LAW to amend By-Law No. 4742, being
"Burnaby Zoning By-Law 1965"

WHEREAS application for rezoning has/~~been~~ been made to the Council.

AND WHEREAS the Council has held a public hearing thereon after
duly giving notice of the time and place of such hearing.

NOW THEREFORE the Council of The Corporation of the District of
Burnaby ENACTS as follows:

1. This By-Law may be cited as "BURNABY ZONING BY-LAW 1965, AMENDMENT
BY-LAW NO. 82, 19 69".
2. The Map (hereinafter called "Map "A'") attached to and forming an
integral part of By-Law No. 4742, being "Burnaby Zoning By-Law 1965", and
designated as the Official Zoning Map of The Corporation of the District of
Burnaby, is hereby amended according to the Map (hereinafter called "Map "B'"),
marginally numbered R.Z. 264 , annexed to this By-Law, and in accordance with
the explanatory legend, notations, references and boundaries designated, des-
cribed, delimited and specified in particularity shown upon said Map "B"; and
the various boundaries and districts shown upon said Map "B" respectively are
an amendment of and in substitution for the respective districts, designated
and marked on said Map "A" insofar as the same are changed, modified or varied
thereby, and the said Map "A" shall be deemed to be and is hereby declared to
be amended accordingly and the said Map "B" is hereby declared to be and shall
form an integral part of said Map "A", as if originally incorporated therein,
and shall be interpreted accordingly.

Read a first time this 15th day of December 19 69.

Read a second time this 15th day of December 19 69.

Read a third time this 2nd day of February 1970.

Reconsidered and adopted by an affirmative vote of at least two-
thirds of all the members of the Council this 15th day of February 19 71.

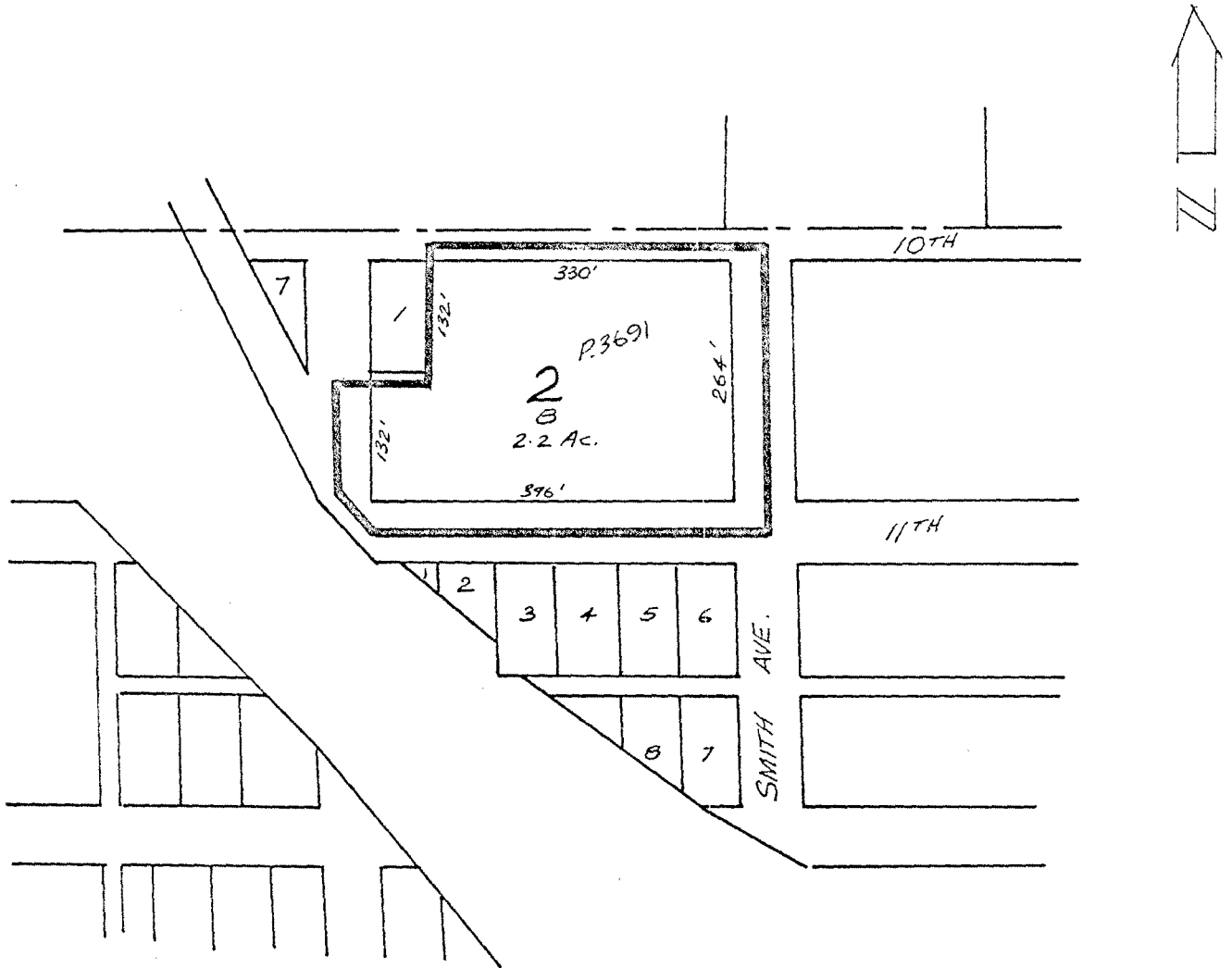


Robert M. Purdie
MAYOR
J. Shaw
CLERK

GENERAL INDUSTRIAL DISTRICT (M2)

MAP "B"

Legal: Lot "B", Block 2, D.L. 69, Plan 3691



THE APPLICANT REQUESTS TO BE OUTLINED
IN BLACK ON THIS MAP (AREA) BEYOND:

FROM RESIDENTIAL DISTRICT FIVE (R5)
TO GENERAL INDUSTRIAL (M2)

CORPORATION

1" REP. 200'
S.T.
3/12/69