

THE CORPORATION OF THE DISTRICT OF BURNABY

BY-LAW NO. 5593

A BY-LAW to amend By-Law No. 4742, being
"Burnaby Zoning By-Law 1965"

WHEREAS application for rezoning has/~~been~~ been made to the Council.

AND WHEREAS the Council has held a public hearing thereon after
duly giving notice of the time and place of such hearing.

NOW THEREFORE the Council of The Corporation of the District of
Burnaby ENACTS as follows:

1. This By-Law may be cited as "BURNABY ZONING BY-LAW 1965, AMENDMENT
BY-LAW NO. 53, 19 69".
2. The Map (hereinafter called "Map "A"") attached to and forming an
integral part of By-Law No. 4742, being "Burnaby Zoning By-Law 1965", and
designated as the Official Zoning Map of The Corporation of the District of
Burnaby, is hereby amended according to the Map (hereinafter called "Map "B""),
marginally numbered R.Z. 253 , annexed to this By-Law, and in accordance with
the explanatory legend, notations, references and boundaries designated, des-
cribed, delimited and specified in particularity shown upon said Map "B"; and
the various boundaries and districts shown upon said Map "B" respectively are
an amendment of and in substitution for the respective districts, designated
and marked on said Map "A" insofar as the same are changed, modified or varied
thereby, and the said Map "A" shall be deemed to be and is hereby declared to
be amended accordingly and the said Map "B" is hereby declared to be and shall
form an integral part of said Map "A", as if originally incorporated therein,
and shall be interpreted accordingly.

Read a first time this 3rd day of November 19 69.

Read a second time this 3rd day of November 19 69.

Read a third time this 3rd day of November 19 69.

Reconsidered and adopted by an affirmative vote of at least two-
thirds of all the members of the Council this 10th day of November 19 69



Robert M. Pithu
M A Y O R

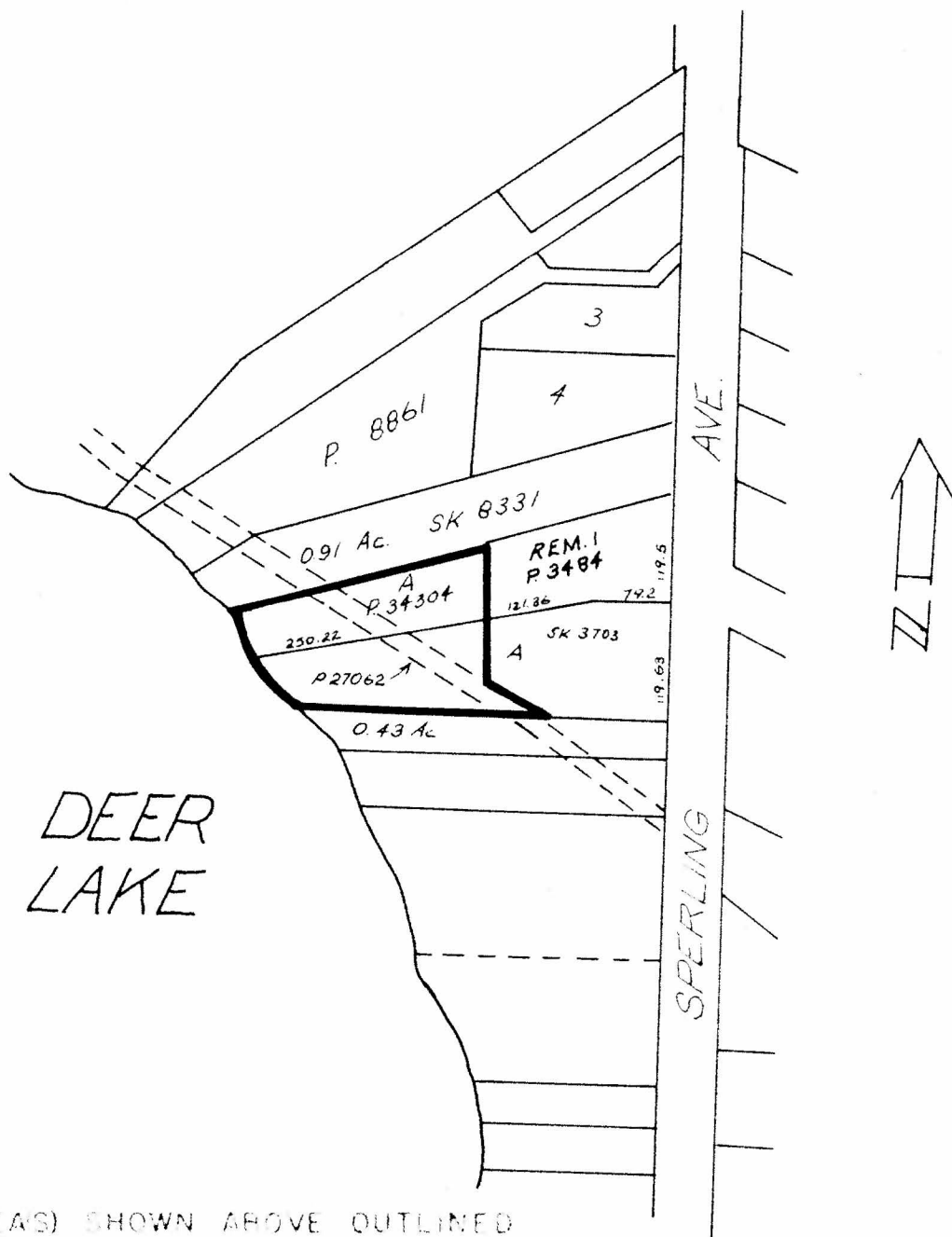
J. Shaw
C L E R K

BY-LAW NO. 5593 BEING A BY-LAW TO AMEND BY-LAW NO. 4742 BEING THE BURNABY ZONING BY-LAW, 1965

PROPERTY REZONED TO PARK AND PUBLIC USE DISTRICT (P3)

MAP "B"

- Legal:
- (i) Parcel "A", Expl. Pl. 34304, Block 1, D.L. 85, Plan 3484
 - (ii) Parcel 2, Ref. Pl. 35549, Parcel "A", D.L. 85



THE AREA(S) SHOWN ABOVE OUTLINED IN BLACK (—) IS (ARE) REZONED

FROM RESIDENTIAL DISTRICT ONE (R1)

TO PARK AND PUBLIC USE DISTRICT (P3)

PLANNING DEPARTMENT		CORPORATION OF THE DISTRICT OF BURNABY	
SCALE	1"=REP. 200'	OFFICIAL ZONING MAP	
DRAWN	S.T.		
DATE	18/11/69		
		NO. R.Z. 253	