

THE CORPORATION OF THE DISTRICT OF BURNABY

BY-LAW NO. 5459

A BY-LAW to amend By Law No. 4742, being  
"Burnaby Zoning By-Law 1965"

WHEREAS applications for rezoning ~~has been~~ <sup>have</sup> been made to the Council.

AND WHEREAS the Council has held a public hearing thereon after duly giving notice of the time and place of such hearing.

NOW THEREFORE the Council of The Corporation of the District of Burnaby ENACTS as follows:

1. This By-Law may be cited as "BURNABY ZONING BY-LAW 1965, AMENDMENT BY-LAW NO. 82, 19 68".

2. The Map (hereinafter called "Map "A'") attached to and forming an integral part of By-Law No. 4742, being "Burnaby Zoning By-Law 1965", and designated as the Official Zoning Map of The Corporation of the District of Burnaby, is hereby amended according to the Maps (hereinafter called "Maps "B'") marginally numbered R. Z. <sup>197(a)</sup> ~~to~~ <sup>197(n)</sup> annexed to this By-Law, and in accordance with the explanatory legend, notations, references and boundaries designated, described, delimited and specified in particularity shown upon said Maps "B"; and the various boundaries and districts shown upon said Maps "B" respectively are an amendment of and in substitution for the respective districts, designated and marked on said Map "A" insofar as the same are changed, modified or varied thereby, and the said Map "A" shall be deemed to be and is hereby declared to be amended accordingly and the said Maps "B" ~~is~~ <sup>are</sup> hereby declared to be and shall form an integral part of said Map "A", as if originally incorporated therein, and shall be interpreted accordingly.

Read a first time this 9th day of December, 1968.

Read a second time this 9th day of December, 19 68.

Read a third time this 9th day of December, 19 68.

Reconsidered and adopted by an affirmative vote of at least two-thirds of all the members of the Council this 16th day of December, 19 68.

*Robert W. Pultice*

MAYOR

~~XXXXXXXXXX~~

*K. Wall*

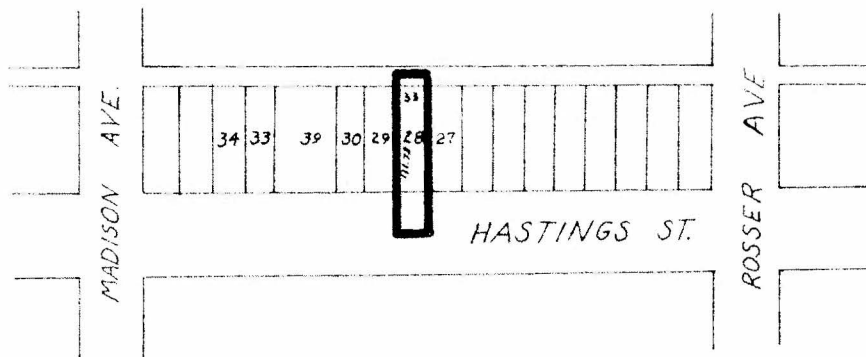
DEPUTY C L E R K

BY-LAW NO. 5459 BEING A BY-LAW TO AMEND BY-LAW  
 NO. 4742 BEING THE BURNABY ZONING BY-LAW, 1965

PROPERTY REZONED TO: COMMUNITY COMMERCIAL (C2) DISTRICT

MAP "B"

Legal: Lots 28, Blk. 6, D.L. 121, Plan 1054  
 and portions of road and lane as outlined  
 below.



THE AREA(S) SHOWN ABOVE OUTLINED

IN BLACK (—) IS (ARE) REZONED: FROM GENERAL COMMERCIAL (C3)  
 TO COMMUNITY COMMERCIAL (C2)

PLANNING DEPARTMENT	
SCALE	1" = 200'
DRAWN	G.M.A.
DATE	27/1/69

CORPORATION OF THE DISTRICT OF BURNABY

OFFICIAL ZONING MAP

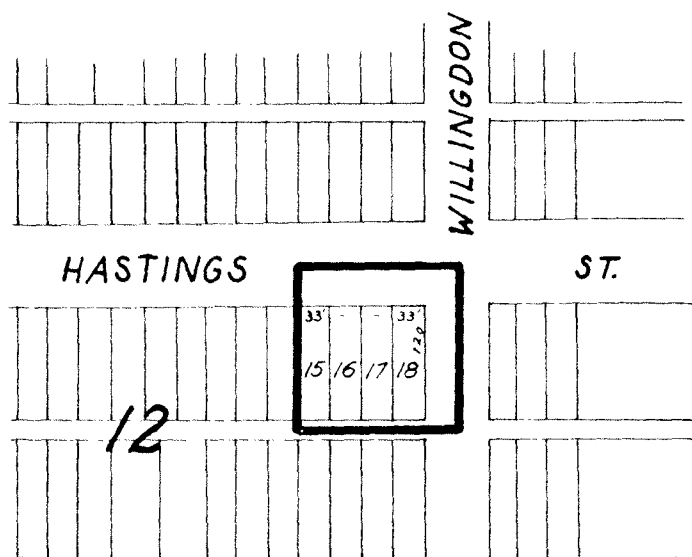
NO. R.Z. 197 (A)

BY-LAW NO. 5459 BEING A BY-LAW TO AMEND BY-LAW  
 NO. 4742 BEING THE BURNABY ZONING BY-LAW, 1965

PROPERTY REZONED TO: COMMUNITY COMMERCIAL (C2) DISTRICT

MAP "B"

Legal: Lots 15 to 18 ex., N. 20', Blk. 12,  
 D.L. 121, Plan 1054 and portions of  
 road and lane as outlined below.



THE AREA(S) SHOWN ABOVE OUTLINED

IN BLACK (—) IS (ARE) REZONED: FROM GENERAL COMMERCIAL (C3)  
 TO COMMUNITY COMMERCIAL (C2)

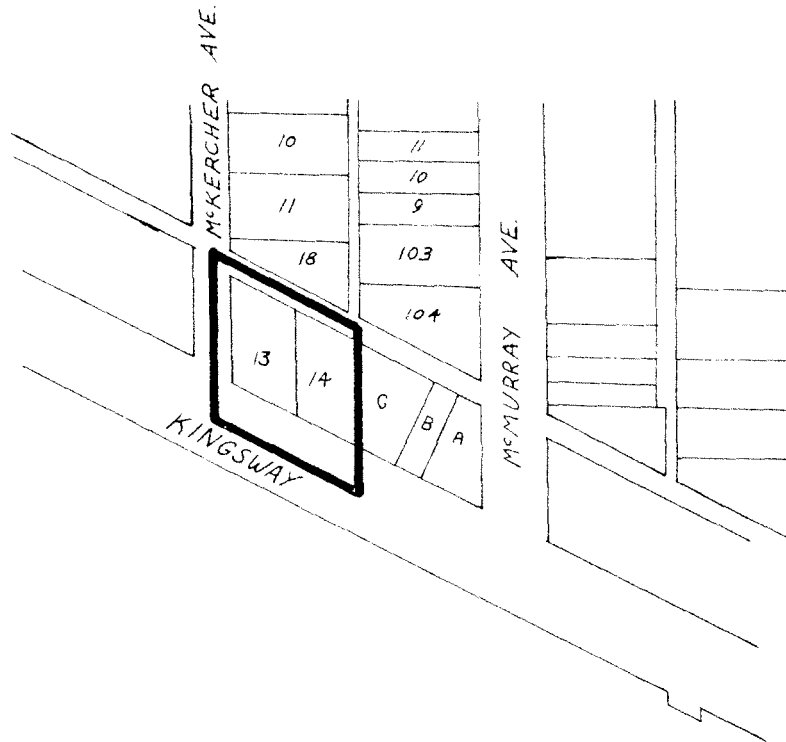
PLANNING DEPARTMENT		CORPORATION OF THE DISTRICT OF BURNABY	
SCALE	1" = 200'	OFFICIAL ZONING MAP	
DRAWN	G.M.A.		
DATE	27/1/69		
		NO. R.Z. 197 (F)	

BY-LAW NO. 5459 BEING A BY-LAW TO AMEND BY-LAW  
 NO. 4742 BEING THE BURNABY ZONING BY-LAW, 1965

PROPERTY REZONED TO: GASOLINE SERVICE STATION (C6) DISTRICT

MAP "B"

Legal: Lots 13/14, Blk. 9, D.L. 32, Plan 7662  
 and portions of road and lane as outlined  
 below.



THE AREA(S) SHOWN ABOVE OUTLINED

IN BLACK (—) IS (ARE) REZONED:

FROM GENERAL COMMERCIAL (C3)  
 TO GASOLINE SERVICE STATION (C6)

PLANNING DEPARTMENT	
SCALE	1" = 200'
DRAWN	G.M.A.
DATE	28/1/69

CORPORATION OF THE DISTRICT OF BURNABY

OFFICIAL ZONING MAP

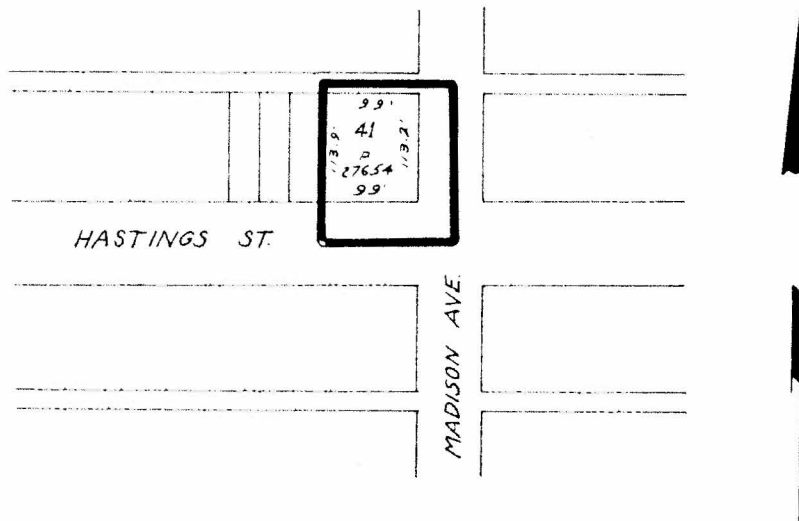
NO. R.Z. 197(c)

BY-LAW NO. 5459 BEING A BY-LAW TO AMEND BY-LAW NO. 4742 BEING THE BURNABY ZONING BY-LAW, 1965

PROPERTY REZONED TO: GASOLINE SERVICE STATION (C6) DISTRICT

MAP "B"

Legal: Lot 41, D.L. 121, Plan 27654  
and portions of road and lane as  
outlined below.



THE AREA(S) SHOWN ABOVE OUTLINED  
IN BLACK (—) IS (ARE) REZONED:

FROM GENERAL COMMERCIAL (C3)  
TO GASOLINE SERVICE STATION (C6)

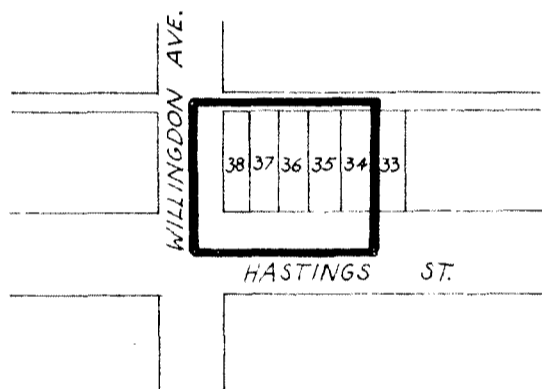
PLANNING DEPARTMENT		CORPORATION OF THE DISTRICT OF BURNABY	
SCALE	1"=200'	OFFICIAL ZONING MAP	
DRAWN	G.M.A.		
DATE	22 / 69		
		NO. R.Z. 197 (1)	

BY-LAW NO. 5459 BEING A BY-LAW TO AMEND BY-LAW  
 NO. 4742 BEING THE BURNABY ZONING BY-LAW, 1965

PROPERTY REZONED TO: SERVICE COMMERCIAL DISTRICT (C4)

MAP "B"

Legal: Lots 34/35/36/37/38, Blk. 8, D.L. 122,  
 Plan 1308 and portions of road and lane  
 as outlined below.



THE AREA(S) SHOWN ABOVE OUTLINED

IN BLACK (—) IS (ARE) REZONED:

FROM GENERAL COMMERCIAL (C3)  
 TO SERVICE COMMERCIAL (C4)

PLANNING DEPARTMENT	
SCALE	1" = 200'
DRAWN	S.M.J.
DATE	2/27/68

CORPORATION OF THE DISTRICT OF BURNABY

OFFICIAL ZONING MAP

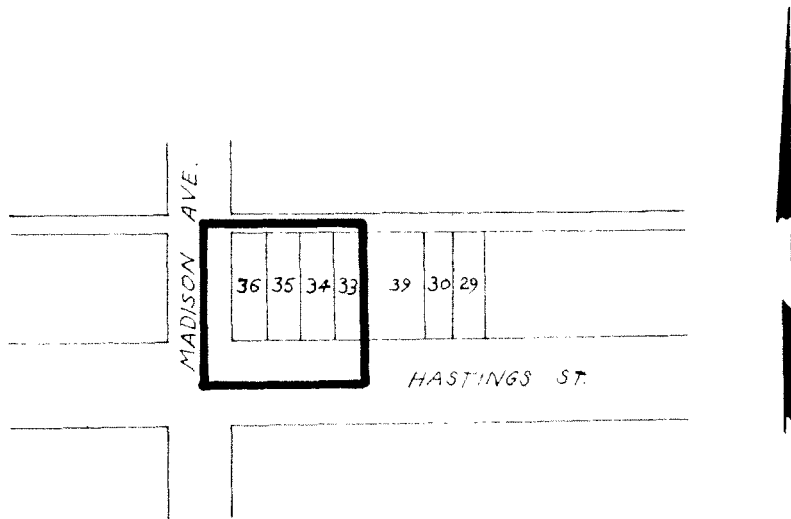
NO. R.Z. 197(e)

BY-LAW NO. 545 BEING A BY-LAW TO AMEND BY-LAW NO. 4742 BEING THE BURNABY ZONING BY-LAW, 1965

PROPERTY REZONED TO: GASOLINE SERVICE STATION DISTRICT (C6)

MAP "B"

Legal: Lots 33 to 36 inc., Blk. 6, D.L. 121,  
Plan 1054 and portions of road and  
lane as outlined below.



THE AREA(S) SHOWN ABOVE OUTLINED

IN BLACK (—) IS (ARE) REZONED:

FROM GENERAL COMMERCIAL (C3)  
TO GASOLINE SERVICE STATION (C6)

PLANNING DEPARTMENT	
SCALE	1" = 200'
DRAWN	S.M.A.
DATE	27 / 69

CORPORATION OF THE DISTRICT OF BURNABY

OFFICIAL ZONING MAP

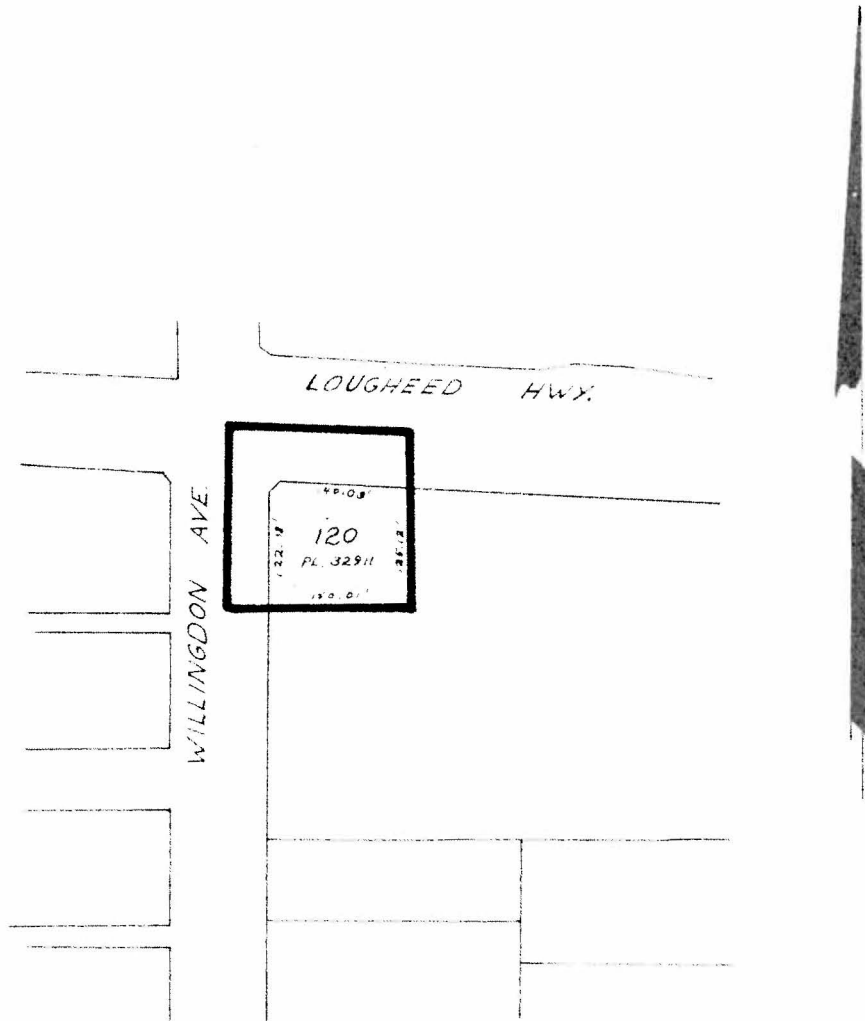
NO. RZ 197(1)

BY-LAW NO. 5159 BEING A BY-LAW TO AMEND BY-LAW  
 NO. 4742 BEING THE BURNABY ZONING BY-LAW, 1965

PROPERTY REZONED TO: COMMUNITY COMMERCIAL DISTRICT (C2)

MAP "B"

Legal: Lot 120, D.L. 124, Plan 32911 and  
 portions of road as outlined below.



THE AREA(S) SHOWN ABOVE OUTLINED  
 IN BLACK (—) IS (ARE) REZONED: FROM GENERAL COMMERCIAL (C3)  
 TO COMMUNITY COMMERCIAL (C2)

PLANNING DEPARTMENT	CORPORATION OF THE DISTRICT OF BURNABY
SCALE DRAWN DATE	OFFICIAL ZONING MAP
	NO. RZ 197 (2)

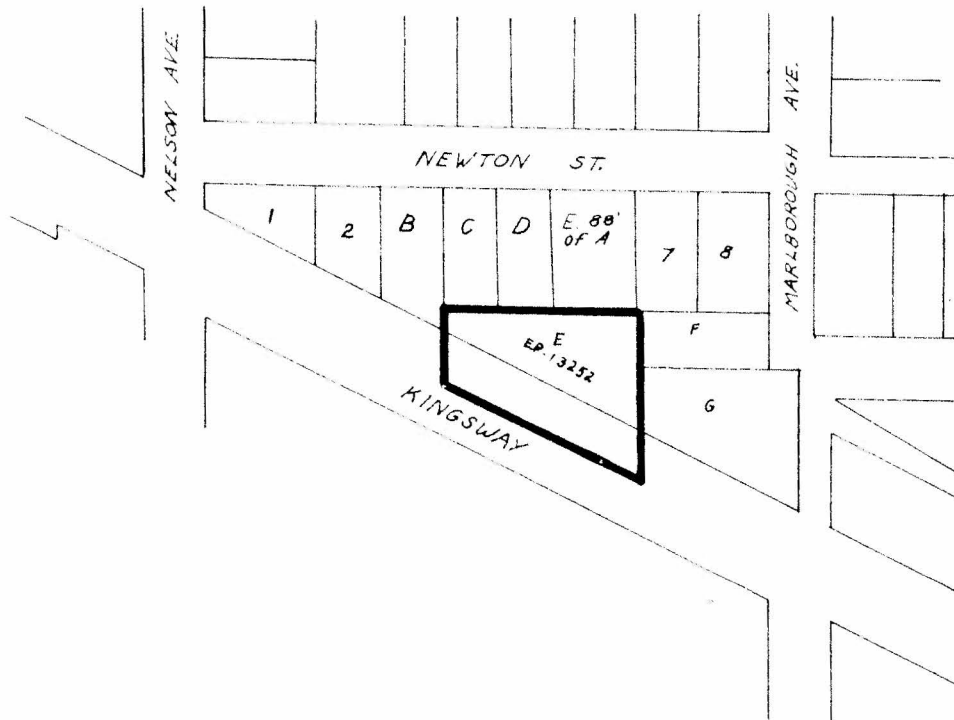


BY-LAW NO. 5459 BEING A BY-LAW TO AMEND BY-LAW  
 NO. 4742 BEING THE BURNABY ZONING BY-LAW, 1965

PROPERTY REZONED TO: SERVICE COMMERCIAL (C4) DISTRICT

MAP "B"

Legal: Lot "E", Expl. PL. 13252, D.L. 152 32/24,  
 Plans 812/783 and portion of road as  
 outlined below.



THE AREA(S) SHOWN ABOVE OUTLINED

IN BLACK (—) IS (ARE) REZONED: FROM GENERAL COMMERCIAL (C3)  
 TO SERVICE COMMERCIAL (C4)

PLANNING DEPARTMENT	
SCALE	1"=200'
DRAWN	G.M.H.
DATE	28/1/69

CORPORATION OF THE DISTRICT OF BURNABY

OFFICIAL ZONING MAP

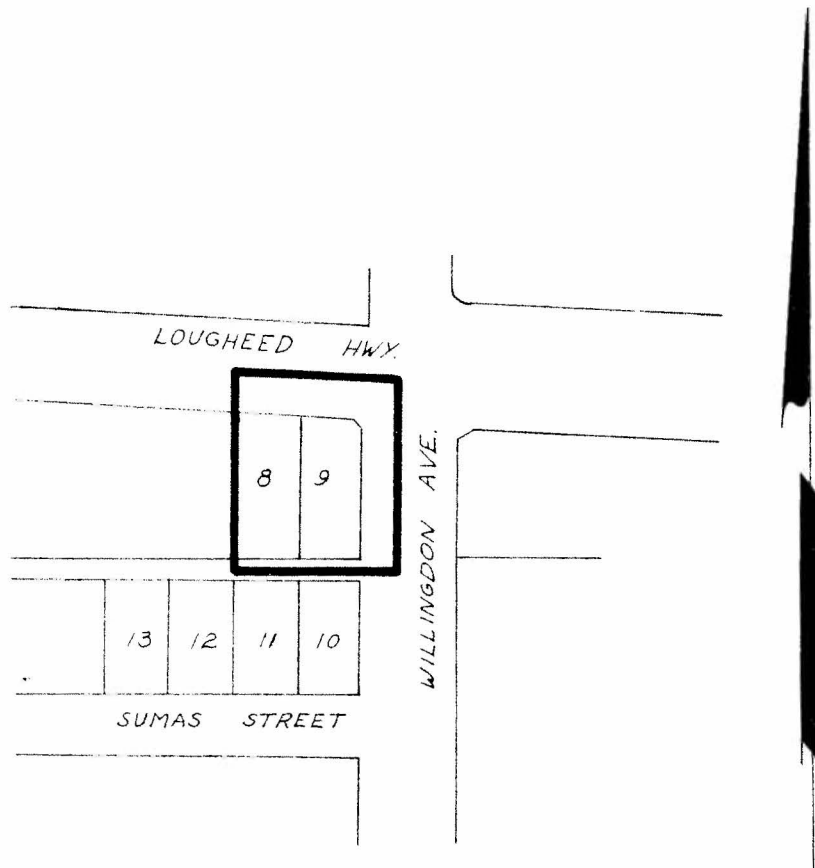
NO. R.Z. 197(h)

BY-LAW NO. 5159 BEING A BY-LAW TO AMEND BY-LAW NO. 4742 BEING THE BURNABY ZONING BY-LAW, 1965

PROPERTY REZONED TO: GASOLINE SERVICES STATION (C6)

MAP "B"

Legal: Lots 8/9, Ex. Expl. Pl. 30951, Blk. 6, D.L. 119E, Plan 2855 and portions of road and lane as outlined below.



THE AREA(S) SHOWN ABOVE OUTLINED

IN BLACK (—) IS (ARE) REZONED:

FROM GENERAL COMMERCIAL (C3)  
TO GASOLINE SERVICE STATION (C6)

PLANNING DEPARTMENT	
SCALE	1" = 200'
DRAWN	G.M.J.
DATE	29/1/69

CORPORATION OF THE DISTRICT OF BURNABY

OFFICIAL ZONING MAP

NO. R.Z. 197(i)

BY-LAW NO. 5189 BEING A BY-LAW TO AMEND BY-LAW  
 NO. 4742 BEING THE BURNABY ZONING BY-LAW, 1965

PROPERTY REZONED TO: GASOLINE SERVICE STATION (CG) DISTRICT

MAP "B"

Legal: Lots 10/11, Blk. 3, D.L. 119E4, Plan 2855  
 and portions of road and lane as outlined  
 below.



THE AREA(S) SHOWN ABOVE OUTLINED

IN BLACK (—) IS (ARE) REZONED: FROM GENERAL COMMERCIAL (C3)  
 TO GASOLINE SERVICE STATION (CG)

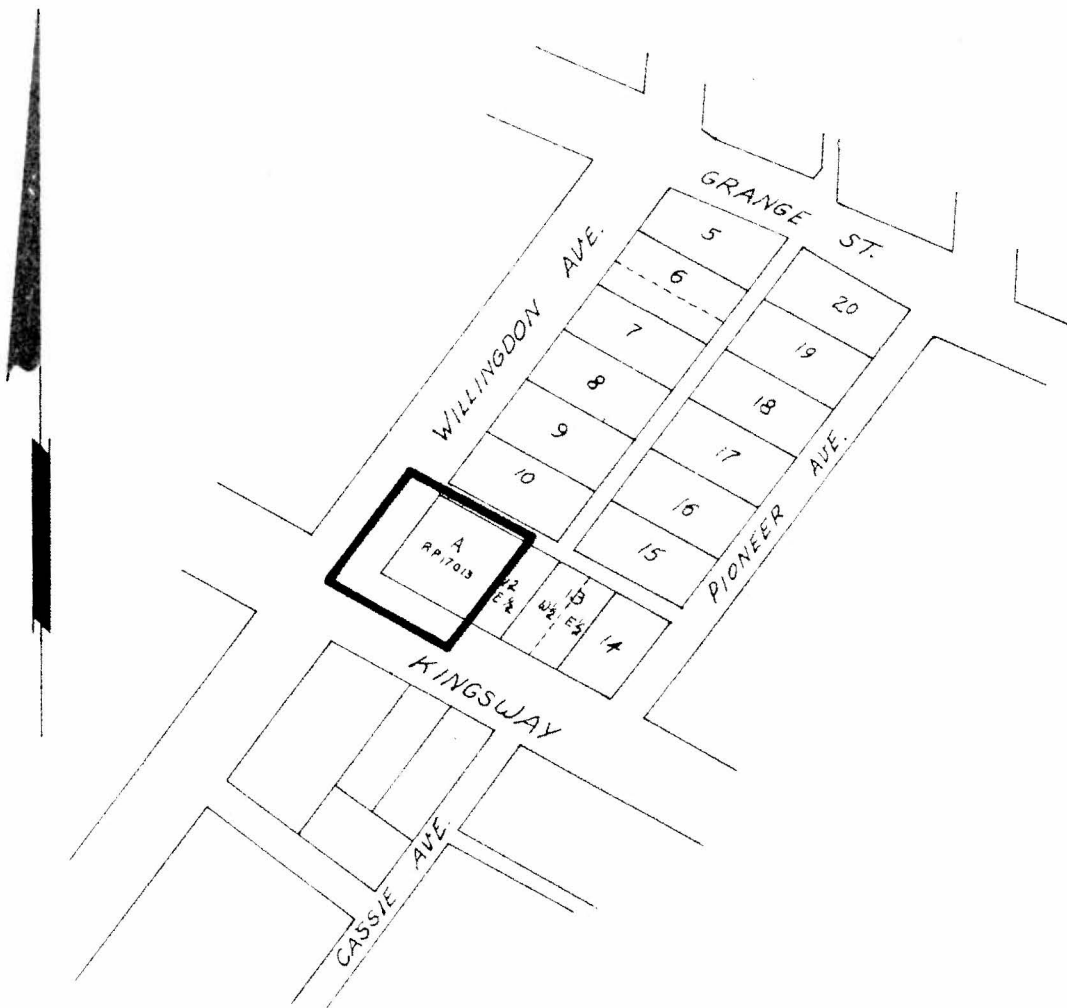
PLANNING DEPARTMENT	CORPORATION OF THE DISTRICT OF BURNABY	
SCALE	1" = 200'	OFFICIAL ZONING MAP
DRAWN	97A	
DATE	29/1/69	
		NO. R 2 1970

BY-LAW NO. 5459 BEING A BY-LAW TO AMEND BY-LAW  
 NO. 4742 BEING THE BURNABY ZONING BY-LAW, 1965

PROPERTY REZONED TO: GASOLINE SERVICE STATION (C6)

MAP "B"

Legal: Pcl. "A", Ref. Pl. 17013, R.S.D. 11 & 12  
 Pt., Bk. 4 Pt. & 51 & 52, D.L. 153 & 33,  
 Pl. 1316 and portions of road and lane as  
 outlined below.



THE AREA(S) SHOWN ABOVE OUTLINED  
 IN BLACK (—) IS (ARE) REZONED:

FROM GENERAL COMMERCIAL (C3)  
 TO GASOLINE SERVICE STATION (C6)

PLANNING DEPARTMENT	
SCALE	1" = 200'
DRAWN	S.M.H.
DATE	25.3.66

CORPORATION OF THE DISTRICT OF BURNABY

OFFICIAL ZONING MAP

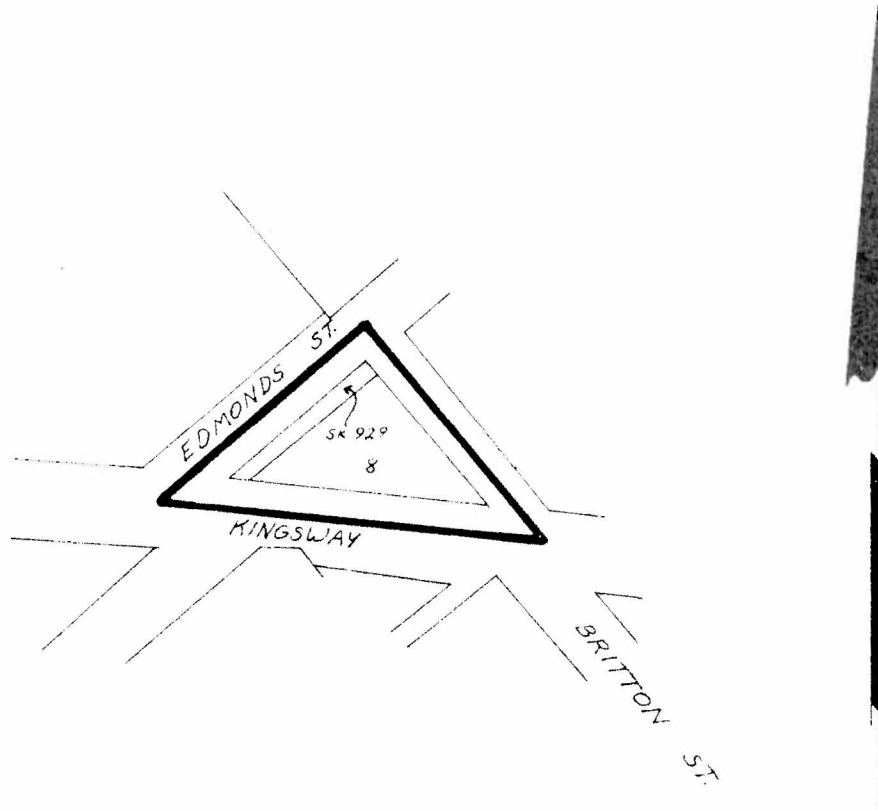
NO. R.Z. 197 (b)

BY-LAW NO. 5459 BEING A BY-LAW TO AMEND BY-LAW  
 NO. 4742 BEING THE BURNABY ZONING BY-LAW, 1965

PROPERTY REZONED TO: GASOLINE SERVICE STATION (C6)

MAP "B"

Legal: Sketch 929, S.D. 8/073 ac. pt., Blk. 143,  
 D.L. 95N, Plan 556, and portions of  
 road as outlined below.



THE AREA(S) SHOWN ABOVE OUTLINED  
 IN BLACK (—) IS (ARE) REZONED: FROM GENERAL COMMERCIAL (C3)  
 TO GASOLINE SERVICE STATION (C6)

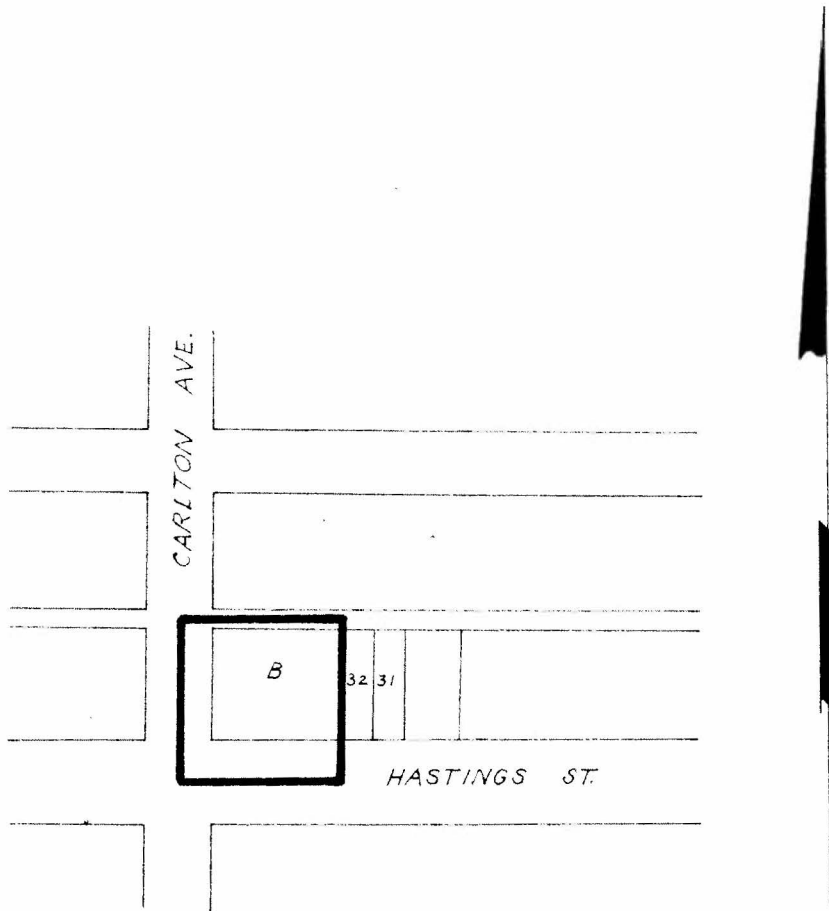
PLANNING DEPARTMENT		CORPORATION OF THE DISTRICT OF BURNABY	
SCALE	1" = 200'	OFFICIAL ZONING MAP	
DRAWN	24/5		
DATE	29/3/50		
		NO. R Z. 197 (1)	

BY-LAW NO. 5459 BEING A BY-LAW AMEND BY-LAW  
 NO. 4742 BEING THE BURNABY ZONING BY-LAW, 1965

PROPERTY REZONED TO: GASOLINE SERVICE STATION (C6) DISTRICT

MAP "B"

Legal: Lot "B", Blk. 7, D.L. 121, Plan 1054  
 and portions of road and lane as  
 outlined below.



THE AREA(S) SHOWN ABOVE OUTLINED

IN BLACK (—) IS (ARE) REZONED:

FROM GENERAL COMMERCIAL (C3)  
 TO GASOLINE SERVICE STATION (C6)

PLANNING DEPARTMENT	
SCALE	1" = 200'
DRAWN	GMA
DATE	27/1/69

CORPORATION OF THE DISTRICT OF BURNABY

OFFICIAL ZONING MAP

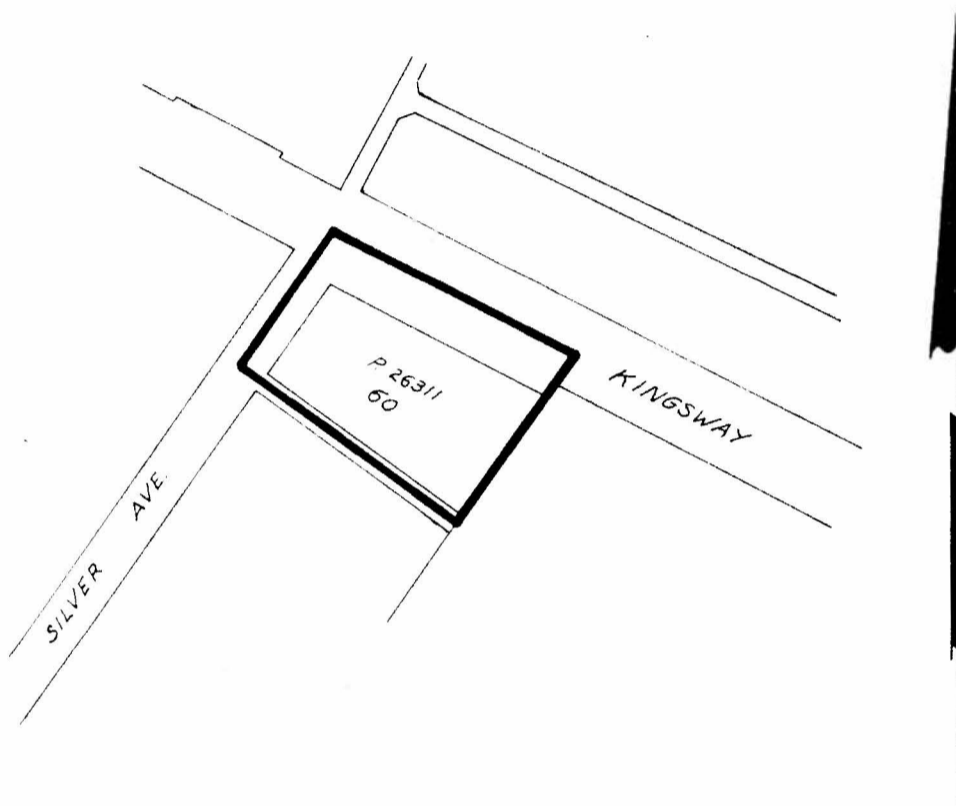
NO. R.Z. 197 (m)

BY-LAW NO. 5459 BEING A BY-LAW TO AMEND BY-LAW  
 NO. 4742 BEING THE BURNABY ZONING BY-LAW, 1965

PROPERTY REZONED TO: SERVICE COMMERCIAL DISTRICT (C4)

MAP "B"

Legal: Lot 60 Ex. Expl. Pl. 31337, D.L. 153, Pl. 26311  
 and portions of road and lane as outlined  
 below.



THE AREA(S) SHOWN ABOVE OUTLINED  
 IN BLACK (—) IS (ARE) REZONED:

FROM GENERAL COMMERCIAL DISTRICT (C3)  
 TO SERVICE COMMERCIAL DISTRICT (C4)

PLANNING DEPARTMENT		CORPORATION OF THE DISTRICT OF BURNABY	
SCALE	1" = 200'	OFFICIAL ZONING MAP	
DRAWN	J.P.L.		
DATE	29/1/69		
		NO. R.Z. 197 (n)	