

THE CORPORATION OF THE DISTRICT OF BURNABY

BY-LAW NO. 5415

A BY-LAW to amend By-Law No. 4742, being
"Burnaby Zoning By-Law 1965"

WHEREAS application for rezoning has ~~been~~ been made to the Council.

AND WHEREAS the Council has held a public hearing thereon after
duly giving notice of the time and place of such hearing.

NOW THEREFORE the Council of The Corporation of the District of
Burnaby ENACTS as follows:

1. This By-Law may be cited as "BURNABY ZONING BY-LAW 1965, AMENDMENT
BY-LAW NO. 59, 19 68".
2. The Map (hereinafter called "Map "A"") attached to and forming an
integral part of By-Law No. 4742, being "Burnaby Zoning By-Law 1965", and
designated as the Official Zoning Map of The Corporation of the District of
Burnaby, is hereby amended according to the Map (hereinafter called "Map "B""),
marginally numbered R.Z. 303 , annexed to this By-Law, and in accordance with
the explanatory legend, notations, references and boundaries designated, des-
cribed, delimited and specified in particularity shown upon said Map "B"; and
the various boundaries and districts shown upon said Map "B" respectively are
an amendment of and in substitution for the respective districts, designated
and marked on said Map "A" insofar as the same are changed, modified or varied
thereby, and the said Map "A" shall be deemed to be and is hereby declared to
be amended accordingly and the said Map "B" is hereby declared to be and shall
form an integral part of said Map "A", as if originally incorporated therein,
and shall be interpreted accordingly.

Read a first time this 28th day of October, 19 68

Read a second time this 28th day of October, 19 68.

Read a third time this 2nd day of February, 19 70.

Reconsidered and adopted by an affirmative vote of at least two-
thirds of all the members of the Council this 16th day of March, 19 70.

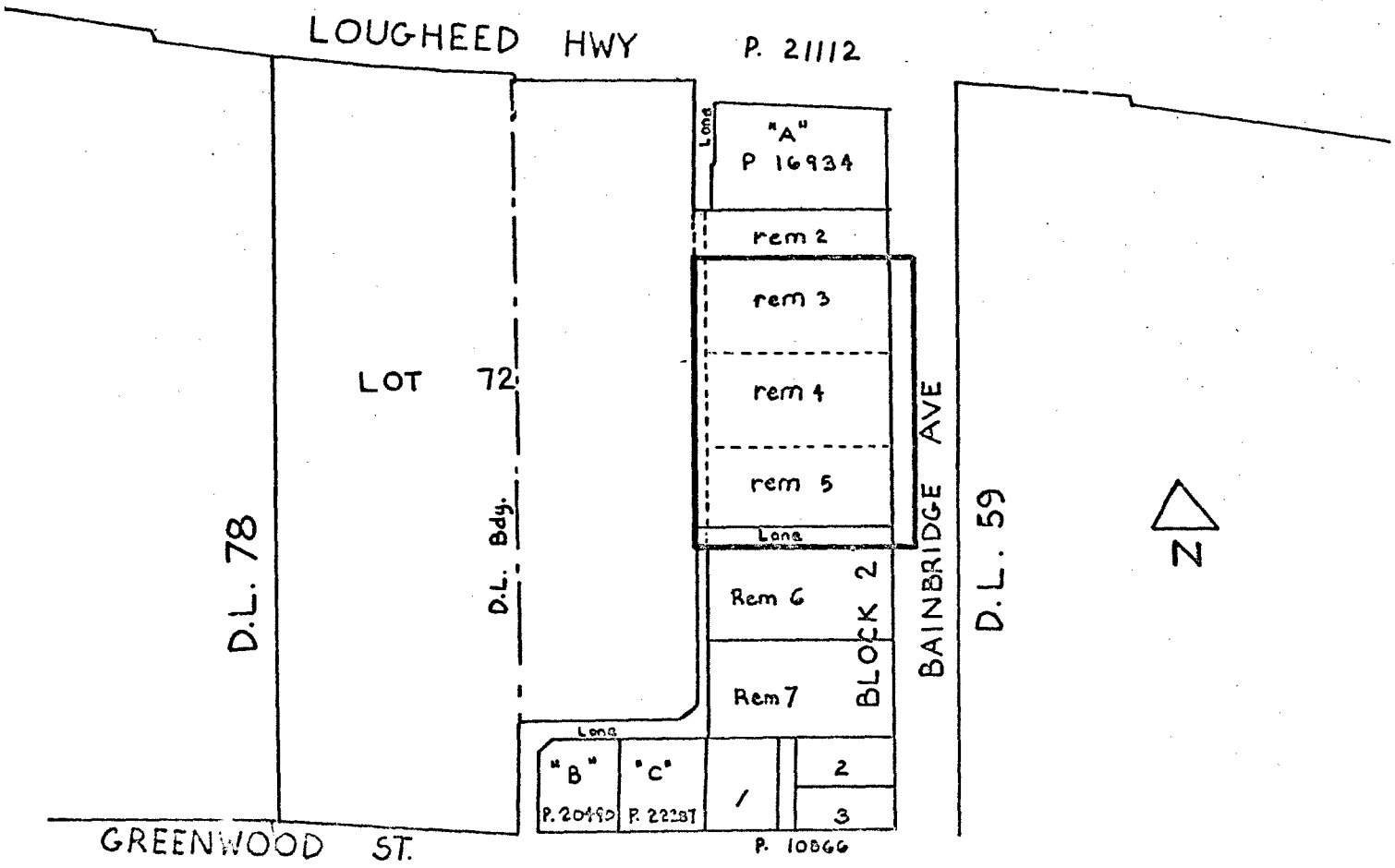


Robert M. Pitto
MAYOR
J. Shaw
CLERK

BY-LAW NO. 5415 BEING A BY-LAW TO AMEND BY-LAW
 NO. 4742 BEING THE BURNABY ZONING BY-LAW, 1965

PROPERTY REZONED TO P8 PARKING DISTRICT

Map "B" OLD LEGAL: Lots 3, 4, and 5 except expl. Pl. 1441, Block 2,
 D.L. 59, Plan 3799
 NEW LEGAL: Part of Lot 72 of D.L.'s 59 and 78, Plan 36979,
 Group 1, N.W.D.



THE AREA(S) SHOWN ABOVE OUTLINED
 IN BLACK (—) IS (ARE) REZONED:

FROM: R1 RESIDENTIAL
 TO: P8 PARKING DISTRICT

PLANNING DEPARTMENT	
SCALE	1 inch = 200'
RAWN	GP
DATE	MARCH 16, 1970

CORPORATION OF THE DISTRICT OF BURNABY

OFFICIAL ZONING MAP