

THE CORPORATION OF THE DISTRICT OF BURNABY

BY-LAW NO. 5403

A BY-LAW to amend By Law No. 4742, being  
"Burnaby Zoning By-Law 1965"

WHEREAS application for rezoning has ~~been~~ been made to the  
Council.

AND WHEREAS the Council has held a public hearing thereon after  
duly giving notice of the time and place of such hearing.

NOW THEREFORE the Council of The Corporation of the District of  
Burnaby ENACTS as follows:

1. This By-Law may be cited as "BURNABY ZONING BY-LAW 1965, AMEND-  
MENT BY-LAW NO. 57 1968 "

2. The Map (hereinafter called "Map "A"") attached to and forming  
an integral part of By-Law No. 4742, being "Burnaby Zoning By-Law 1965", and  
designated as the Official Zoning Map of The Corporation of the District of  
Burnaby, is hereby amended according to the Map (hereinafter called "Map "B"")  
marginally numbered R.Z. 185 , annexed to this By-Law, and in accordance with  
the explanatory legend, notations, references and boundaries designated,  
described, delimited and specified in particularity shown upon said Map "B";  
and the various boundaries and districts shown upon said Map "B" respectively  
are an amendment of and in substitution for the respective districts, designated  
and marked on said Map "A" insofar as the same are changed, modified or varied  
thereby, and the said Map "A" shall be deemed to be and is hereby declared to  
be amended accordingly and the said Map "B" is hereby declared to be and shall  
form an integral part of said Map "A", as if originally incorporated therein,  
and shall be interpreted accordingly.

Read a first time this 9th day of September 19 68.

Read a second time this 9th day of September 19 68.

Read a third time this 7th day of October 19 68.

Reconsidered and adopted by an affirmative vote of at least two-  
thirds of all the members of the Council this 12th day of November 19 68.



*Robert M. Purdie*

M A Y O R  
~~XXXXXXXXXX~~

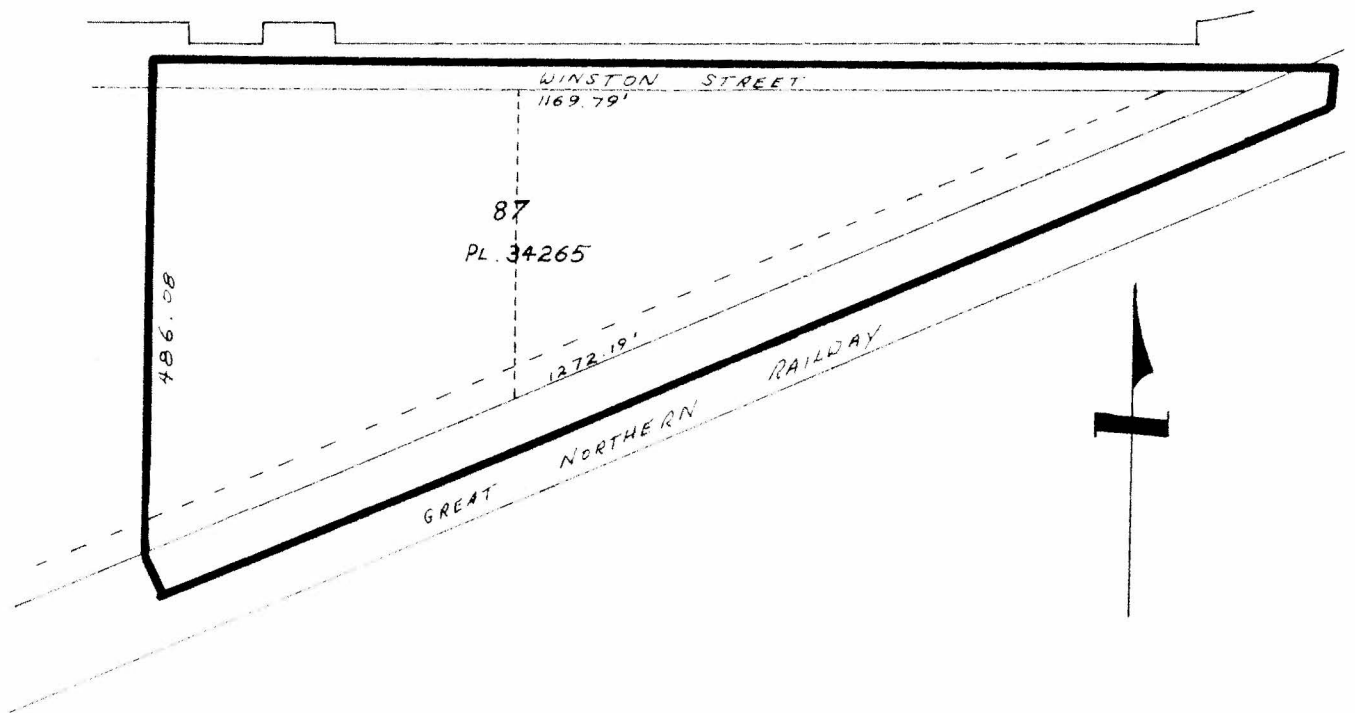
*J. Ward*  
DEPUTY C L E R K

BY-LAW NO. 5403 BEING A BY-LAW TO AMEND BY-LAW  
 NO. 4742 BEING THE BURNABY ZONING BY-LAW, 1965

PROPERTY REZONED TO: GENERAL INDUSTRIAL DISTRICT (M2)

MAP "B"

Legal: Lot 87, D.L. 40, Plan 34265  
 and portions of road as outlined below.  
 (formerly  
 (a) Lot "A", Blocks 11/12, D.L. 40,  
 Plan 14281  
 (b) Lot 1, Block 10, D.L. 40, Plan 3048



THE AREA(S) SHOWN ABOVE OUTLINED  
 IN BLACK (—) IS (ARE) REZONED: FROM MANUFACTURING DISTRICT (M1)  
 TO GENERAL INDUSTRIAL DISTRICT (M2)

PLANNING DEPARTMENT		CORPORATION OF THE DISTRICT OF BURNABY	
SCALE	1" = 200'	OFFICIAL ZONING MAP	
DRAWN	G.M.A.		
DATE	7/1/69		
		NO. R.Z. 185	