

THE CORPORATION OF THE DISTRICT OF BURNABY

BY-LAW NO. 5381

A BY-LAW to amend By-Law No. 4742, being
"Burnaby Zoning By-Law 1965"

WHEREAS application for rezoning has ~~been~~ been made to the Council.

AND WHEREAS the Council has held a public hearing thereon after
duly giving notice of the time and place of such hearing.

NOW THEREFORE the Council of The Corporation of the District of
Burnaby ENACTS as follows:

1. This By-Law may be cited as "BURNABY ZONING BY-LAW 1965, AMENDMENT
BY-LAW NO. 48, 1968".

2. The Map (hereinafter called "Map "A"") attached to and forming an
integral part of By-Law No. 4742, being "Burnaby Zoning By-Law 1965", and
designated as the Official Zoning Map of The Corporation of the District of
Burnaby, is hereby amended according to the Map (hereinafter called "Map "B""),
marginally numbered R.Z. 305, annexed to this By-Law, and in accordance with
the explanatory legend, notations, references and boundaries designated, des-
cribed, delimited and specified in particularity shown upon said Map "B"; and
the various boundaries and districts shown upon said Map "B" respectively are
an amendment of and in substitution for the respective districts, designated
and marked on said Map "A" insofar as the same are changed, modified or varied
thereby, and the said Map "A" shall be deemed to be and is hereby declared to
be amended accordingly and the said Map "B" is hereby declared to be and shall
form an integral part of said Map "A", as if originally incorporated therein,
and shall be interpreted accordingly.

Read a first time this 22nd day of July, 19 68.

Read a second time this 22nd day of July, 19 68.

Read a third time this 13th day of July 19 70.

Reconsidered and adopted by an affirmative vote of at least two-

thirds of all the members of the Council this 27th day of July, 19 70

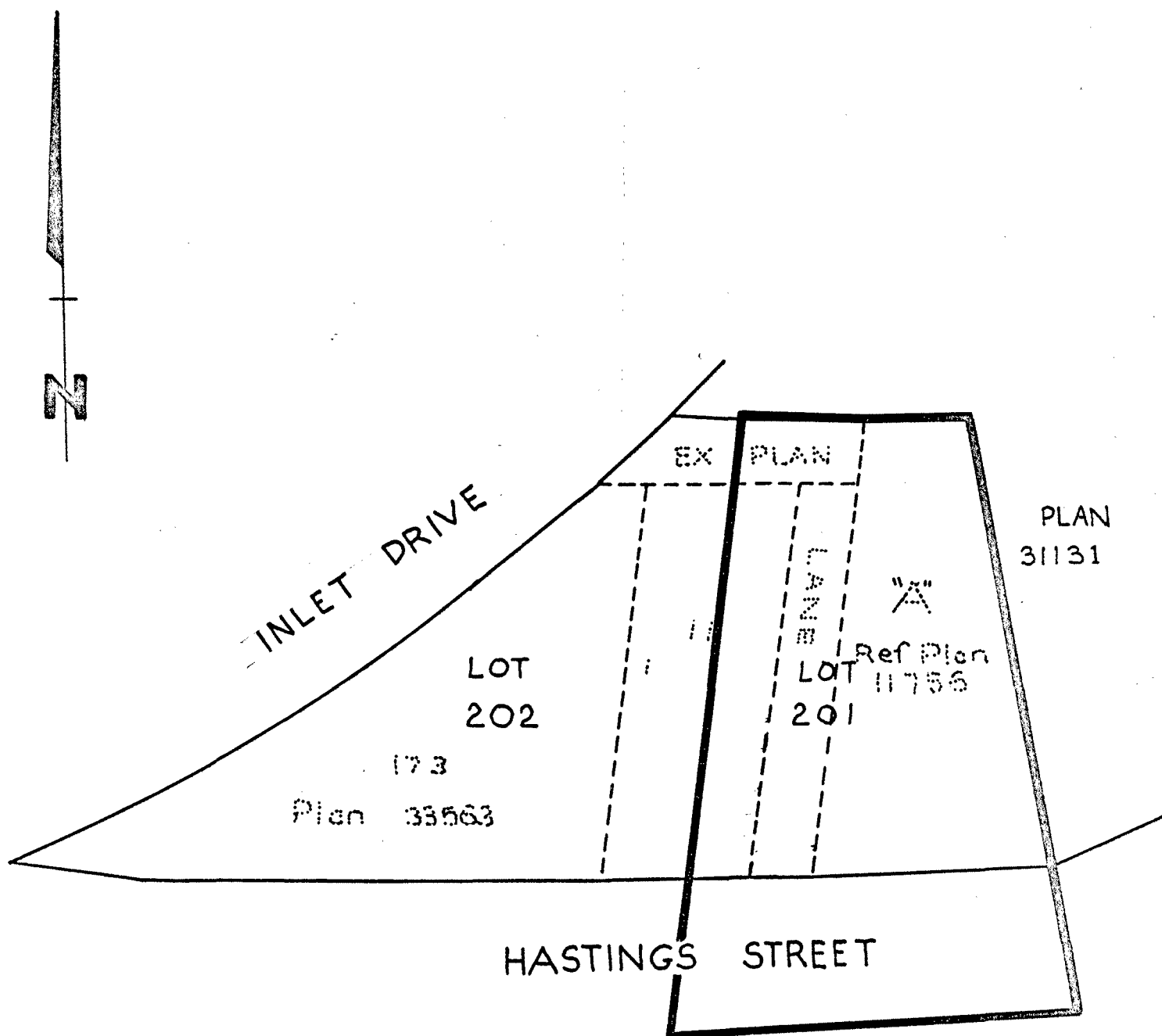


Robert H. Ruthe
MAYOR
J. H. Law
CLERK

BY-LAW NO. 5381 BEING A BY-LAW TO AMEND BY-LAW
 NO. 4742 BEING THE BURNABY ZONING BY-LAW, 1965

PROPERTY REZONED TO
 MAP "B" MULTIPLE FAMILY RESIDENTIAL DISTRICT (RM2)

- Old Legal: a) Lot 11, S.D. 1, Blocks 1 & 2, D.L. 207, Plan 4032
 b) Parcel "A", Ref. pl. 11756, R.S.D. 1, S.D. "A", and
 "D", Blocks 1 & 2, D.L. 207, Plans 4141 and 5923
 New Legal: Lot 201, D.L. 207, Group 1, Plan 37638, N.W.D.



THE AREA(S) SHOWN ABOVE OUTLINED
 IN BLACK (—) IS (ARE) REZONED:

FROM: COMMUNITY COMMERCIAL DISTRICT (C2)

TO: MULTIPLE FAMILY RESIDENTIAL DISTRICT (RM2)

PLANNING
 DEPARTMENT

SCALE 1" = 50'

DRAWN G.P.

DATE APRIL 9/70

CORPORATION OF THE DISTRICT OF BURNABY

OFFICIAL ZONING MAP

NO RZ 305