

THE CORPORATION OF THE DISTRICT OF BURNABY

BY-LAW NO. 5377

A BY-LAW to amend By-Law No. 4742, being  
"Burnaby Zoning By-Law 1965".

WHEREAS application for rezoning has been made to the  
Council.

AND WHEREAS the Council has held a public hearing thereon  
after duly giving notice of the time and place of such hearing.

NOW THEREFORE the Council of The Corporation of the  
District of Burnaby ENACTS as follows:

1. This By-law may be cited as "BURNABY ZONING BY-LAW 1965,  
AMENDMENT BY-LAW NO. 44, 1968".
2. The Map (hereinafter called "Map "A'") attached to and  
forming an integral part of By-Law No. 4742, being "Burnaby Zoning By-  
Law 1965", and designated as the Official Zoning Map of The Corporation  
of the District of Burnaby, is hereby amended according to the Map  
(hereinafter called "Map "B'"), marginally numbered R.Z. 206, annexed  
to this By-Law, and in accordance with the explanatory legend, notations,  
references and boundaries designated, described, delimited, and specified  
in particularity shown upon said Map "B"; and the various boundaries  
and districts shown upon said Map "B" respectively are an amendment of  
and in substitution for the respective districts, designated and marked  
on said Map "A" insofar as the same are changed, modified or varied  
thereby, and the said Map "A" shall be deemed to be and is hereby  
declared to be amended accordingly and the said Map "B" is hereby  
declared to be and shall form an integral part of said Map "A", as if  
originally incorporated therein and shall be interpreted accordingly.
3. The Comprehensive Development Plan entitled "90 Housing  
Units Central Mortgage & Housing Corporation F.P. 1/68 Burnaby, B. C."  
(Stride Avenue Housing Development), prepared by Dawson Housing Develop-  
ments Ltd. Vancouver, dated November 7, 1968, and comprising Sheets  
numbered P1, L1 and L2, and A1 to A5 inclusive, deposited with and

signed by the Municipal Clerk, is deemed to be attached to and form part of this By-Law.

Read a first time this 22nd day of July, 1968.

Read a second time this 22nd day of July, 1968.

Read a third time this 17th day of February, 1969.

Reconsidered and adopted by an affirmative vote of at least two-thirds of all the members of the Council this 24th day of February, 1969.



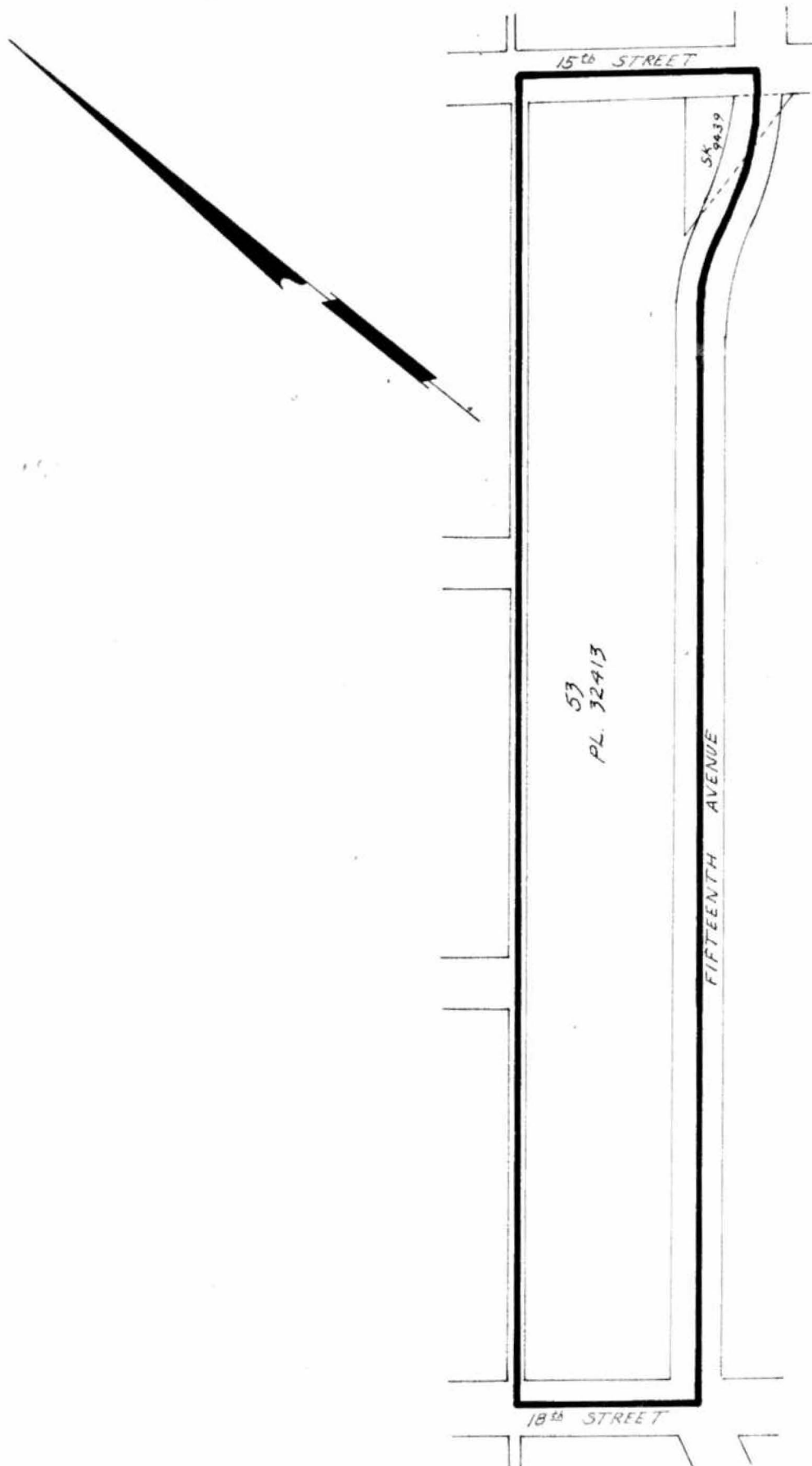
*Robert W. Pottle*  
MAYOR  
*J. Shaw*  
CLERK

BY-LAW NO. 5377 BEING A BY-LAW TO AMEND BY-LAW NO. 4742 BEING THE BURNABY ZONING BY-LAW, 1965

PROPERTY REZONED TO: COMPREHENSIVE DEVELOPMENT DISTRICT (CD)

MAP "B"

Legal: (1) Lot 53, D.L. 53, Plan "2413"  
 (2) Portion of Pl. "A", exd. Pl. 9439, Block 25, D.L. 53, Plan 3037



THE AREA(S) SHOWN ABOVE OUTLINED FROM RESIDENTIAL DISTRICT FIVE (R5) IN BLACK (——) IS (ARE) REZONED: TO COMPREHENSIVE DEVELOPMENT DISTRICT (CD)

PLANNING DEPARTMENT	
SCALE	1" = 200'
DRAWN	G.M.A.
DATE	4/3/69

CORPORATION OF THE DISTRICT OF BURNABY

OFFICIAL ZONING MAP

NO. R.Z. 206