

THE CORPORATION OF THE DISTRICT OF BURNABY

BY-LAW NO. 5298

A BY-LAW to amend By Law No. 4742, being
"Burnaby Zoning By-Law 1965"

WHEREAS application for rezoning has ~~been~~ been made to the
Council.

AND WHEREAS the Council has held a public hearing thereon after
duly giving notice of the time and place of such hearing.

NOW THEREFORE the Council of The Corporation of the District of
Burnaby ENACTS as follows:

1. This By-Law may be cited as "BURNABY ZONING BY-LAW 1965. AMEND-
MENT BY-LAW NO. 10 19 68"

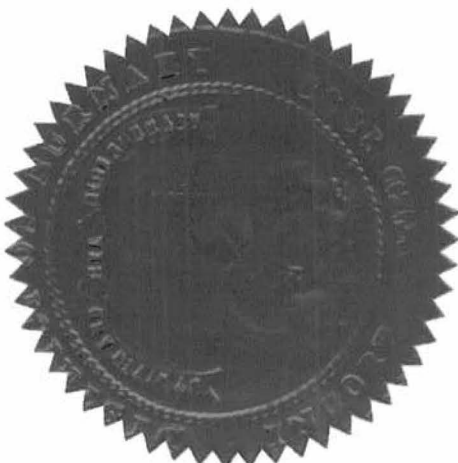
2. The Map (hereinafter called "Map "A"") attached to and forming
an integral part of By-Law No 4742, being "Burnaby Zoning By-Law 1965", and
designated as the Official Zoning Map of The Corporation of the District of
Burnaby, is hereby amended according to the Map (hereinafter called "Map "B"")
marginally numbered R Z 234, annexed to this By-Law, and in accordance with
the explanatory legend, notations, references and boundaries designated,
described, delimited and specified in particularity shown upon said Map "B";
and the various boundaries and districts shown upon said Map "B" respectively
are an amendment of and in substitution for the respective districts, designated
and marked on said Map "A" insofar as the same are changed, modified or varied
thereby, and the said Map "A" shall be deemed to be and is hereby declared to
be amended accordingly and the said Map "B" is hereby declared to be and shall
form an integral part of said Map "A", as if originally incorporated therein,
and shall be interpreted accordingly.

Read a first time this 18th day of March 1968

Read a second time this 18th day of March 1968

Read a third time this 7th day of July 1969

Reconsidered and adopted by an affirmative vote of at least two-
thirds of all the members of the Council this 14th day of July 1969.



Robert M. Putter

MAYOR
XXXXXXXXX

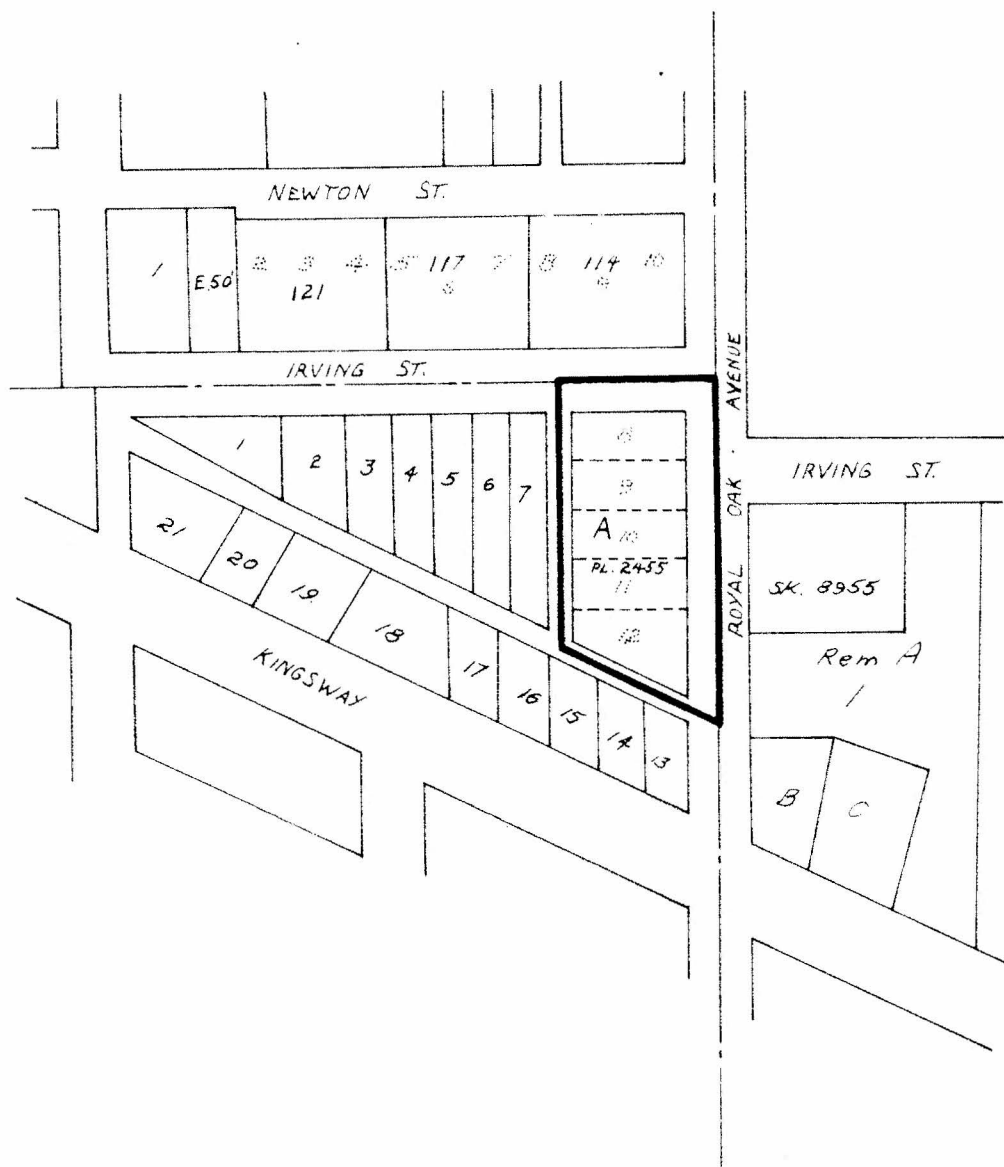
Laband
DEPUTY CLERK

Legal

BY-LAW NO. 2285 BEING A BY-LAW TO AMEND BY-LAW NO. 4742 BEING THE BURNABY ZONING BY-LAW, 1965

PROPERTY REZONED TO MULTIPLE FAMILY RESIDENTIAL THREE (RM3)

Legal: Lot "A", East Pl., Block 22, D.L. 152
Plan 2435
(formerly - Lots 8, 9, 10, 11, and 12, Block 22, East Pl., D.L. 152, Plan 2435)



THE AREA(S) SHOWN ABOVE OUTLINED IN BLACK (—) IS (ARE) REZONED:

FROM RESIDENTIAL DISTRICT FIVE (R5)
TO MULTIPLE FAMILY RESIDENTIAL DISTRICT THREE (RM3)

PLANNING DEPARTMENT	
SCALE	1"=200'
DRAWN	GMA
DATE	24/7/69

CORPORATION OF THE DISTRICT OF BURNABY

OFFICIAL ZONING MAP

NO. R.Z. 234