

THE CORPORATION OF THE DISTRICT OF BURNABY

BY-LAW NO. 5281

A BY-LAW to amend By Law No. 4742, being
"Burnaby Zoning By-Law 1965"

WHEREAS application for rezoning has/~~has~~ been made to the
Council.

AND WHEREAS the Council has held a public hearing thereon after
duly giving notice of the time and place of such hearing.

NOW THEREFORE the Council of The Corporation of the District of
Burnaby ENACTS as follows:

1. This By-Law may be cited as "BURNABY ZONING BY-LAW 1965. AMEND-
MENT BY-LAW NO. 1, 1968 "

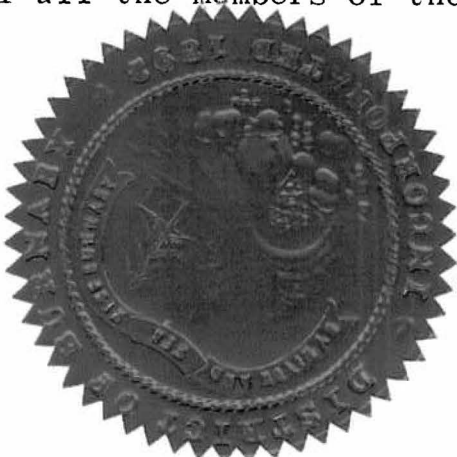
2. The Map (hereinafter called "Map "A"") attached to and forming
an integral part of By-Law No. 4742, being "Burnaby Zoning By-Law 1965", and
designated as the Official Zoning Map of The Corporation of the District of
Burnaby, is hereby amended according to the Map (hereinafter called "Map "B"")
marginally numbered R.Z. 164, annexed to this By-Law, and in accordance with
the explanatory legend, notations, references and boundaries designated,
described, delimited and specified in particularity shown upon said Map "B";
and the various boundaries and districts shown upon said Map "B" respectively
are an amendment of and in substitution for the respective districts, designated
and marked on said Map "A" insofar as the same are changed, modified or varied
thereby, and the said Map "A" shall be deemed to be and is hereby declared to
be amended accordingly and the said Map "B" is hereby declared to be and shall
form an integral part of said Map "A", as if originally incorporated therein,
and shall be interpreted accordingly.

Read a first time this 19th day of February, 1968.

Read a second time this 19th day of February, 1968.

Read a third time this 8th day of April, 1968.

Reconsidered and adopted by an affirmative vote of at least two-
thirds of all the members of the Council this 16th day of April, 1968.



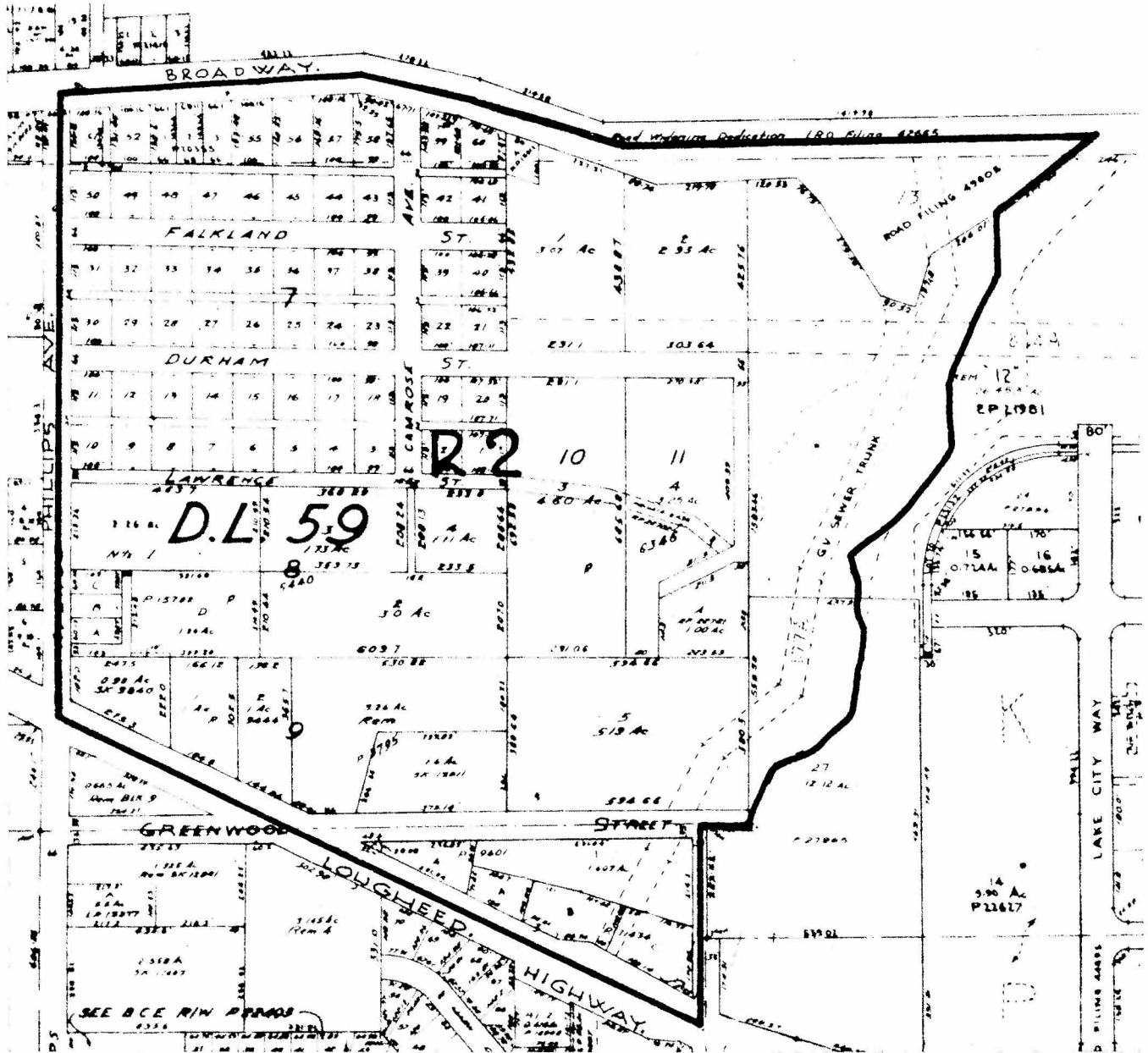
[Handwritten Signature]
MAYOR
~~XXXXXXXX~~
[Handwritten Signature]
CLERK

BY-LAW NO. 5281 BEING A BY-LAW TO AMEND BY-LAW NO. 4742 BEING THE BURNABY ZONING BY-LAW, 1965

PROPERTY REZONED TO: RESIDENTIAL DISTRICT TWO (R2)

MAP "B"

Legal: The area bounded by Lougheed Highway, Phillips Avenue, Eagle Creek Ravine and Broadway.



FROM SMALL HOLDINGS DISTRICT (A2)
TO RESIDENTIAL DISTRICT TWO (R2)

THE AREA(S) SHOWN ABOVE OUTLINED
IN BLACK (—) IS (ARE) REZONED: See above

PLANNING DEPARTMENT		CORPORATION OF THE DISTRICT OF BURNABY	
SCALE	1" = 400'	OFFICIAL ZONING MAP	
DRAWN			
DATE	MAY '68.		
		NO. R.Z. 164	