

THE CORPORATION OF THE DISTRICT OF BURNABY

BY-LAW NO. 5272

A BY-LAW to amend By-Law No. 4742, being
"Burnaby Zoning By-Law 1965".

WHEREAS application for rezoning has ~~been~~ been made to the
Council.

AND WHEREAS the Council has held a public hearing thereon after
duly giving notice of the time and place of such hearing.

NOW THEREFORE the Council of The Corporation of the District of
Burnaby ENACTS as follows:

1. This by-law may be cited as "BURNABY ZONING BY-LAW 1965, AMEND-
MENT BY-LAW NO. 86, 19 67".

2. The Map (hereinafter called "Map "A"") attached to and forming an
integral part of By-law No. 4742, being "Burnaby Zoning By-Law 1965", and
designated as the Official Zoning Map of The Corporation of the District of
Burnaby, is hereby amended according to the Map (hereinafter called "Map "B""),
marginally numbered R.Z. 152, annexed to this by-law, and in accordance
with the explanatory legend, notations, references and boundaries designated,
described, delimited and specified in particularity shown upon said Map "B"; and
the various boundaries and districts shown upon said Map "B" respectively are
an amendment of and in substitution for the respective districts, designated
and marked on said Map "A" insofar as the same are changed, modified or varied
thereby, and the said Map "A" shall be deemed to be and is hereby declared to
be amended accordingly and the said Map "B" is hereby declared to be and shall
form an integral part of said Map "A", as if originally incorporated therein,
and shall be interpreted accordingly.

Read a first time this 22nd day of January, 1968.

Read a second time this 22nd day of January, 1968.

Read a third time this 22nd day of January, 1968.

Reconsidered and adopted by an affirmative vote of at least two-

thirds of all the members of the Council this 29th day of January 1968.

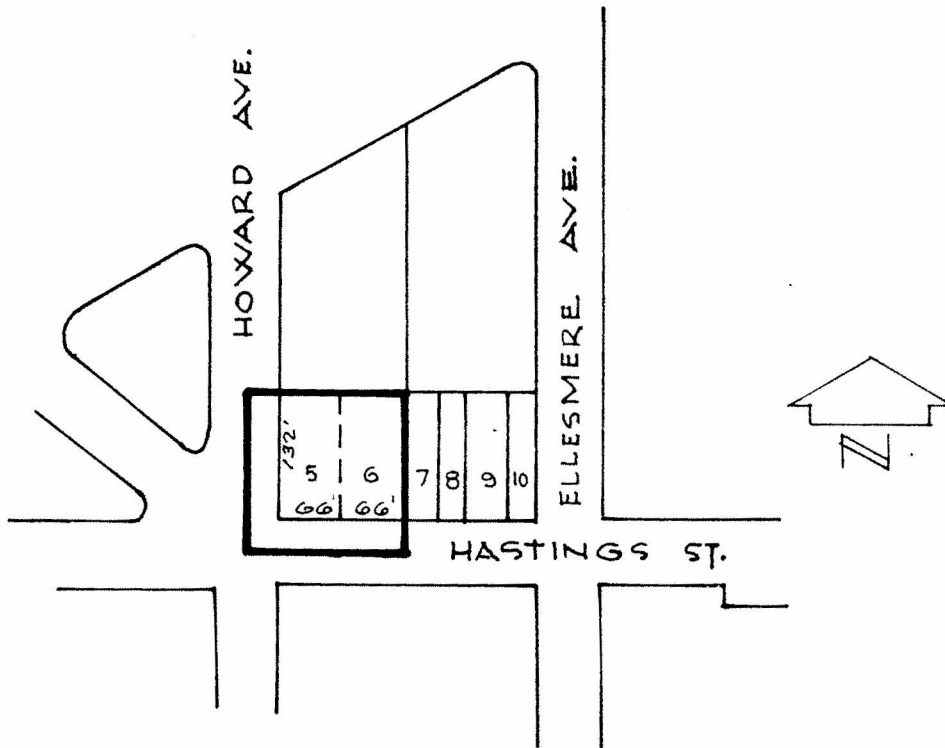


[Signature]
R E E V E
[Signature]
C L E R K

BY-LAW NO. 3272 BEING A BY-LAW TO AMEND BY-LAW
 NO. 4742 BEING THE BURNABY ZONING BY-LAW, 1965

PROPERTY REZONED TO: SERVICE COMMERCIAL DISTRICT (C1)

Legal: Lots 5 and 6, Block 80, D.L. 127, Plan 4953
 and portions of road as outlined below.



FROM COMMUNITY COMMERCIAL DISTRICT (C2)
 TO SERVICE COMMERCIAL DISTRICT (C1)

THE AREA(S) SHOWN ABOVE OUTLINED
 IN BLACK (—) IS (ARE) REZONED: as above.

PLANNING
 DEPARTMENT

CORPORATION OF THE DISTRICT OF BURNABY

SCALE 1" = 200'

DRAWN J.W.M.

DATE FEB./68.

OFFICIAL ZONING MAP

NO. R.Z. 152