

THE CORPORATION OF THE DISTRICT OF BURNABY

BY-LAW NO. 5250

A BY-LAW to amend By-Law No. 4742, being  
"Burnaby Zoning By-Law 1965".

WHEREAS application for rezoning has/~~xxx~~ been made to the Council,

AND WHEREAS the Council has held a public hearing thereon after duly giving notice of the time and place of such hearing,

NOW THEREFORE the Council of The Corporation of the District of Burnaby ENACTS as follows:

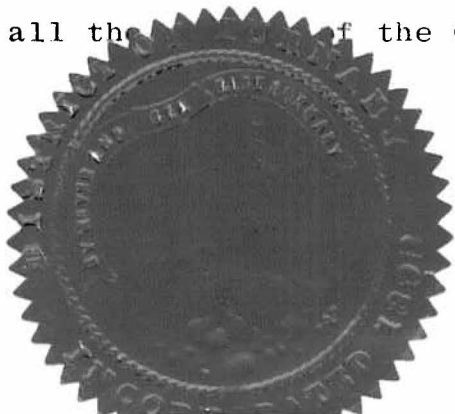
1. This by-law may be cited as "BURNABY ZONING BY-LAW 1965, AMENDMENT BY-LAW NO. 67 , 1967 ".
2. The Map (hereinafter called "Map "A"") attached to and forming an integral part of By-law No. 4742, being "Burnaby Zoning By-Law 1965", and designated as the Official Zoning Map of The Corporation of the District of Burnaby, is hereby amended according to the Map (hereinafter called "Map "B""), marginally numbered R.Z.145, annexed to this by-law, and in accordance with the explanatory legend, notations, references and boundaries designated, described, delimited and specified in particularity shown upon said Map "B"; and the various boundaries and districts shown upon said Map "B" respectively are an amendment of and in substitution for the respective districts, designated and marked on said Map "A" insofar as the same are changed, modified or varied thereby, and the said Map "A" shall be deemed to be and is hereby declared to be amended accordingly and the said Map "B" is hereby declared to be and shall form an integral part of said Map "A", as if originally incorporated therein, and shall be interpreted accordingly.

Read a first time this 18th day of December ~~1965~~ 1967.

Read a second time this 18th day of December ~~1965~~ 1967.

Read a third time this 18th day of December ~~1965~~ 1967.

Reconsidered and adopted by an affirmative vote of at least two-thirds of all the members of the Council this 27th day of December ~~1965~~ 1967.



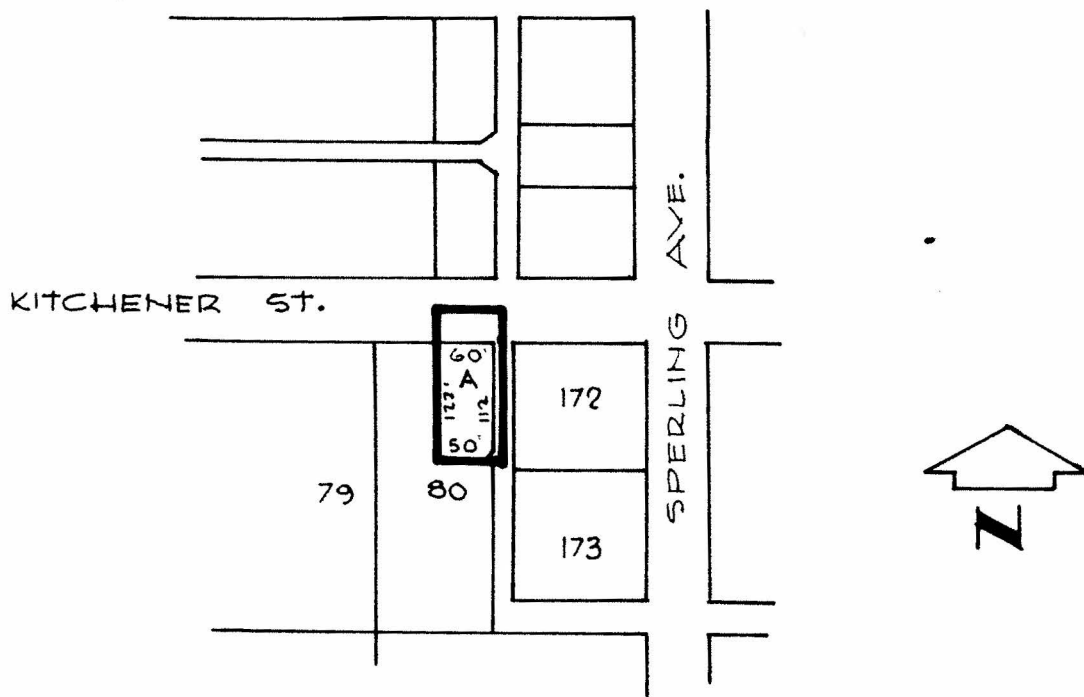
*[Signature]*  
R E E V E

*[Signature]*  
C L E R K

BY-LAW NO. 5250 BEING A BY-LAW TO AMEND BY-LAW  
 NO. 4742 BEING THE BURNABY ZONING BY-LAW, 1965

PROPERTY REZONED TO: RESIDENTIAL DISTRICT FOUR (R4)

Legal: Parcel "A", Block 80, Explanatory Plan  
 16233, D.L. 132, Plan 1493 and portion  
 of road and lane as outlined below.



FROM: NEIGHBOURHOOD COMMERCIAL DISTRICT (C1)  
 TO: RESIDENTIAL DISTRICT FOUR (R4)

THE AREA(S) SHOWN ABOVE OUTLINED  
 IN BLACK (—) IS (ARE) REZONED: as above

PLANNING DEPARTMENT		CORPORATION OF THE DISTRICT OF BURNABY	
SCALE	1" = 200'	OFFICIAL ZONING MAP	
DRAWN	<i>jm.</i>		
DATE	FEB./68.		
		NO. R.Z. 110	