

THE CORPORATION OF THE DISTRICT OF BURNABY

BY-LAW NO. 5207

A BY-LAW to amend By-Law No. 4742, being
"Burnaby Zoning By-Law 1965".

WHEREAS application for rezoning has/~~have~~ been made to the Council.

AND WHEREAS the Council has held a public hearing thereon after duly giving notice of the time and place of such hearing.

NOW THEREFORE the Council of The Corporation of the District of Burnaby ENACTS as follows:

1. This by-law may be cited as "BURNABY ZONING BY-LAW 1965, AMENDMENT BY-LAW NO. 63 , 1967 " .
2. The Map (hereinafter called "Map "A"") attached to and forming an integral part of By-law No. 4742, being "Burnaby Zoning By-Law 1965", and designated as the Official Zoning Map of The Corporation of the District of Burnaby, is hereby amended according to the Map (hereinafter called "Map "B""), marginally numbered R.Z.157, annexed to this by-law, and in accordance with the explanatory legend, notations, references and boundaries designated, described, delimited and specified in particularity shown upon said Map "B"; and the various boundaries and districts shown upon said Map "B" respectively are an amendment of and in substitution for the respective districts, designated and marked on said Map "A" insofar as the same are changed, modified or varied thereby, and the said Map "A" shall be deemed to be and is hereby declared to be amended accordingly and the said Map "B" is hereby declared to be and shall form an integral part of said Map "A", as if originally incorporated therein, and shall be interpreted accordingly.

Read a first time this 2nd day of October, 1967. ~~1965~~

Read a second time this 2nd day of October, 1967. ~~1965~~

Read a third time this 10th day of October, 1967. ~~1965~~

Reconsidered and adopted by an affirmative vote of at least two-thirds of all the members of the Council this 27th day of December, 1967. ~~1965~~



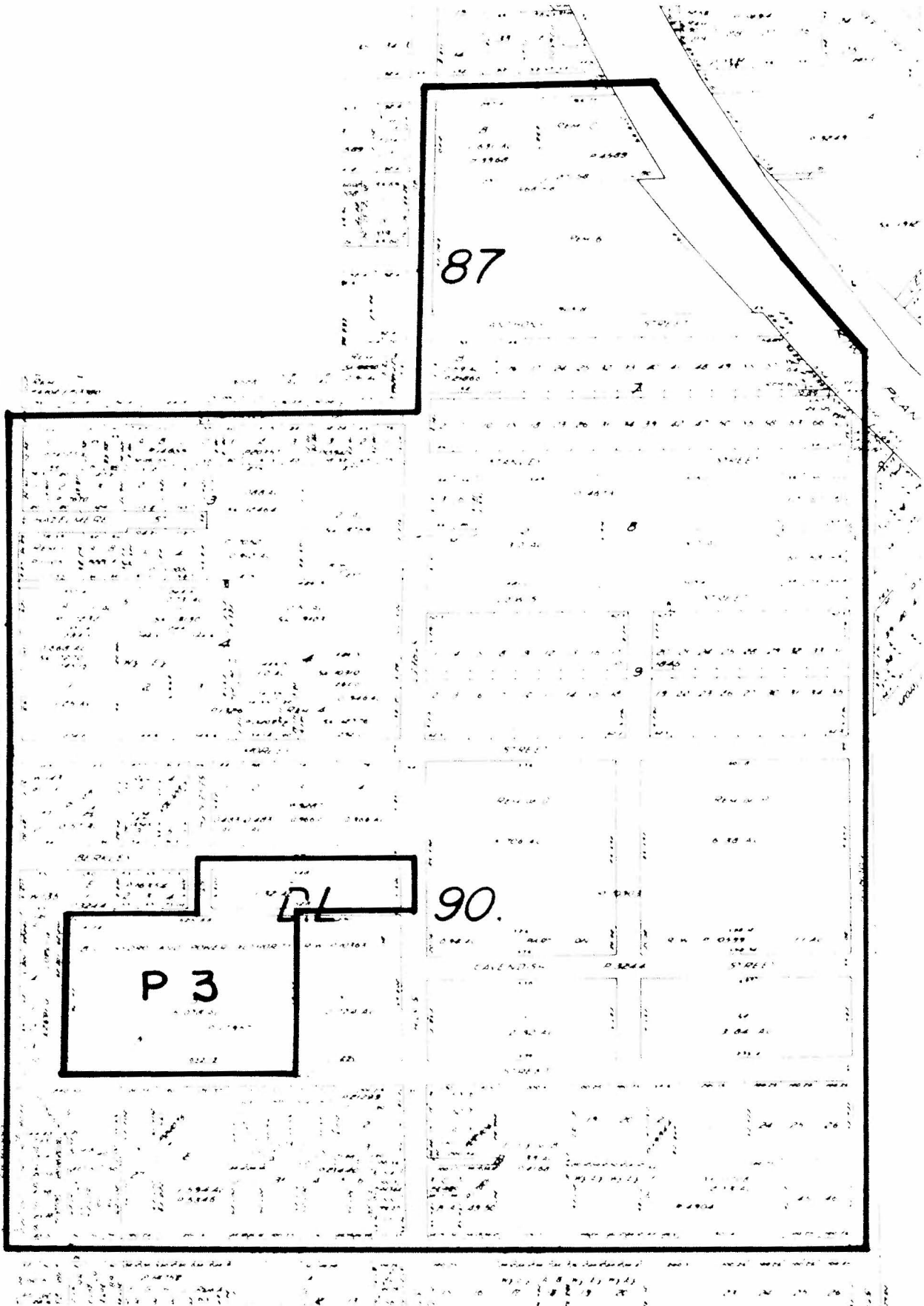
[Signature]
R E E V E
[Signature]
C L E R K

BY-LAW NO. 5207 BEING A BY-LAW TO AMEND BY-LAW
 NO. 4742 BEING THE BURNABY ZONING BY-LAW, 1965

PROPERTY REZONED TO: RESIDENTIAL DISTRICT TWO (R2)

MAP "B"

Legal: See attached sheet



THE AREA(S) SHOWN ABOVE OUTLINED
 IN BLACK (——) IS (ARE) REZONED: See attached sheet.

PLANNING DEPARTMENT	
SCALE	1" = 400'
DRAWN	
DATE	MAR./68

CORPORATION OF THE DISTRICT OF BURNABY

OFFICIAL ZONING MAP

NO. R.Z. 117

**BY-LAW NO. 5207 BEING A BY-LAW TO AMEND BY-LAW
NO. 4742 BEING THE BURNABY ZONING BY-LAW, 1965**

PROPERTY REZONED TO: RESIDENTIAL DISTRICT TWO (R2)

Legal: The area bounded by that portion of Goodlad Street between Canada Way and 4th Street; Canada Way West to Stanley Street; Stanley Street from Canada Way to 6th Street thence connecting with Nursery Street; along Nursery Street from 6th Street to the right-of-way of the Trans Canada Highway; then following the line of the right-of-way in an Easterly direction to a point in line with 4th Street; thence along 4th Street connecting with Goodlad Street to the South-East; (with the exception of the area contained therein being zoned "Park and Public Use District (P2)").

FROM RESIDENTIAL DISTRICT FOUR OR FIVE
(R4 OR R5), OR SMALL HOLDINGS
DISTRICT (A2)
TO RESIDENTIAL DISTRICT TWO (R2)

THE AREA(S) SHOWN ABOVE OUTLINED
IN BLACK (——) IS (ARE) REZONED: As above.

P L A N N I N G D E P A R T M E N T		CORPORATION OF THE DISTRICT OF BURNABY	
SCALE		OFFICIAL ZONING MAP	
DRAWN			
DATE	MAR./68		
		NO. R.Z. 157	