

THE CORPORATION OF THE DISTRICT OF BURNABY
BY-LAW NO. 5205

A BY-LAW to amend By Law No. 4742, being
"Burnaby Zoning By-Law 1965"

WHEREAS application for rezoning has/have been made to the
Council.

AND WHEREAS the Council has held a public hearing thereon after
duly giving notice of the time and place of such hearing.

NOW THEREFORE the Council of The Corporation of the District of
Burnaby ENACTS as follows:

1. This By-Law may be cited as "BURNABY ZONING BY-LAW 1965, AMEND-
MENT BY-LAW NO. 61 1967 "

2. The Map (hereinafter called "Map "A"") attached to and forming
an integral part of By-Law No 4742, being "Burnaby Zoning By-Law 1965", and
designated as the Official Zoning Map of The Corporation of the District of
Burnaby, is hereby amended according to the Map (hereinafter called "Map "B"")
marginally numbered R Z. 160 , annexed to this By-Law, and in accordance with
the explanatory legend, notations, references and boundaries designated,
described, delimited and specified in particularity shown upon said Map "B";
and the various boundaries and districts shown upon said Map "B" respectively
are an amendment of and in substitution for the respective districts, designated
and marked on said Map "A" insofar as the same are changed, modified or varied
thereby, and the said Map "A" shall be deemed to be and is hereby declared to
be amended accordingly and the said Map "B" is hereby declared to be and shall
form an integral part of said Map "A", as if originally incorporated therein,
and shall be interpreted accordingly.

Read a first time this 2nd day of October 19 67

Read a second time this 2nd day of October 19 67

Read a third time this 25th day of March 19 68

Reconsidered and adopted by an affirmative vote of at least two-
thirds of all the members of the Council this 1st day of April 19 68



~~XXXXXXXXXX~~
MAYOR

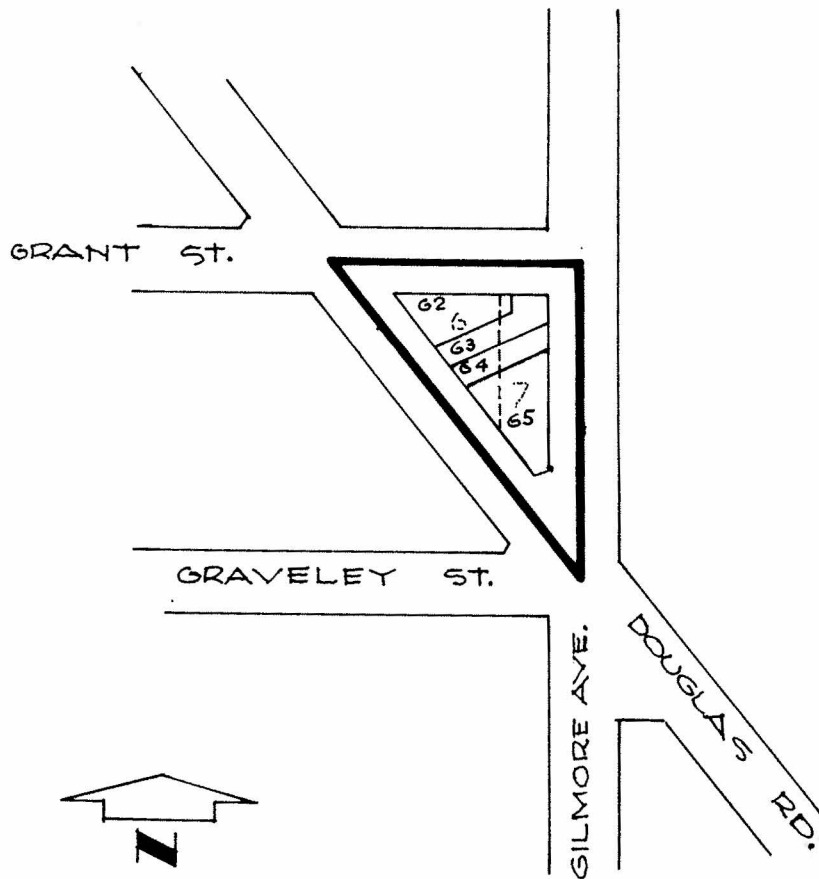
[Signature]
CLERK

MAP "B"

BY-LAW NO. 5205 BEING A BY-LAW TO AMEND BY-LAW NO. 4742 BEING THE BURNABY ZONING BY-LAW, 1965

PROPERTY REZONED TO: RESIDENTIAL DISTRICT SIX(R6) ROW HOUSING

Legal: Lots 62, 63, 64 and 65, D.L. 117, Plan 32881 (formerly Lots 6 and 7, Ex. Ref. Plan 30432, Block 29, D.L. 117E $\frac{1}{2}$, Plan 1222) and portions of road as outlined below.



FROM GASOLINE SERVICE STATION DISTRICT (C6)
TO RESIDENTIAL DISTRICT SIX (R6) ROW HOUSING

THE AREA(S) SHOWN ABOVE OUTLINED
IN BLACK (—) IS (ARE) REZONED: as above.

PLANNING DEPARTMENT		CORPORATION OF THE DISTRICT OF BURNABY	
SCALE	1" = 200'	OFFICIAL ZONING MAP	
DRAWN	Jen.		
DATE	APRIL/68		
		NO. R.Z. 160	