

THE CORPORATION OF THE DISTRICT OF BURNABY

BY-LAW NO. 5062

A BY-LAW to amend By-Law No. 4742, being
"Burnaby Zoning By-Law 1965".

WHEREAS application for rezoning has/~~have~~ been made to the
Council.

AND WHEREAS the Council has held a public hearing thereon after
duly giving notice of the time and place of such hearing.

NOW THEREFORE the Council of The Corporation of the District of
Burnaby ENACTS as follows:

1. This by-law may be cited as "BURNABY ZONING BY-LAW 1965, AMEND-
MENT BY-LAW NO. 5 19 67".

2. The Map (hereinafter called "Map "A"") attached to and forming an
integral part of By-law No. 4742, being "Burnaby Zoning By-Law 1965", and
designated as the Official Zoning Map of The Corporation of the District of
Burnaby, is hereby amended according to the Map (hereinafter called "Map "B""),
marginally numbered R.Z. 83, annexed to this by-law, and in accordance
with the explanatory legend, notations, references and boundaries designated,
described, delimited and specified in particularity shown upon said Map "B"; and
the various boundaries and districts shown upon said Map "B" respectively are
an amendment of and in substitution for the respective districts, designated
and marked on said Map "A" insofar as the same are changed, modified or varied
thereby, and the said Map "A" shall be deemed to be and is hereby declared to
be amended accordingly and the said Map "B" is hereby declared to be and shall
form an integral part of said Map "A", as if originally incorporated therein,
and shall be interpreted accordingly.

Read a first time this 23rd day of January 1967.

Read a second time this 23rd day of January 1967.

Read a third time this 6th day of March 1967.

Reconsidered and adopted by an affirmative vote of at least two-
thirds of all the members of the Council this 13th day of March 1967.



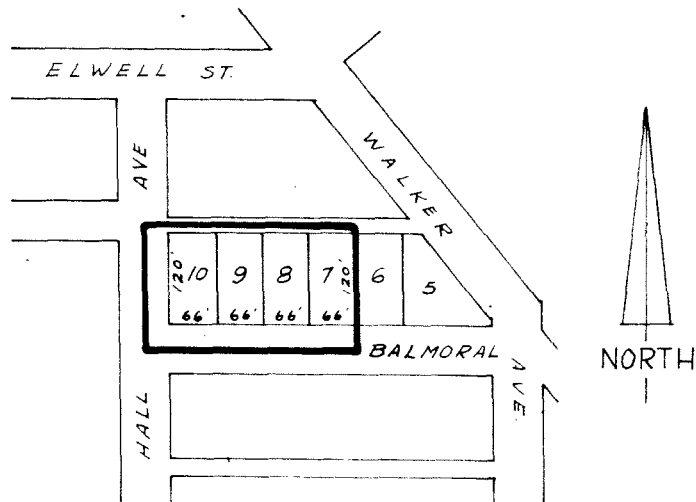
[Handwritten Signature]
R E E V E
[Handwritten Signature]
C L E R K

BY-LAW NO. 5062 BEING A BY-LAW TO AMEND BY-LAW NO. 4742 BEING THE BURNABY ZONING BY-LAW, 1965

PROPERTY REZONED TO: MULTIPLE FAMILY RESIDENTIAL DISTRICT THREE (RM3)

MAP "B"

Legal: Lots 7 to 10 inclusive R.S.D. 1, S.D. 11 13
 Blocks 1 3, D.L. 95N, Plan 1796 and portions
 of road and lane as outlined below.



THE AREA(S) SHOWN ABOVE OUTLINED
 IN BLACK (—) IS(ARE) REZONED:

FROM RESIDENTIAL DISTRICT FIVE (R5)
 TO MULTIPLE FAMILY RESIDENTIAL DISTRICT THREE (RM3)

B-1817

PLANNING DEPARTMENT		CORPORATION OF THE DISTRICT OF BURNABY	
SCALE	1" = 200'	OFFICIAL ZONING MAP NO. R.Z. 83	
RAWN	JB		
DATE	21 MARCH '67		