

THE CORPORATION OF THE DISTRICT OF BURNABY

BY-LAW NO. 5059

A BY-LAW to amend By Law No. 4742, being
"Burnaby Zoning By-Law 1965"

WHEREAS application for rezoning has/~~been~~ been made to the Council.

AND WHEREAS the Council has held a public hearing thereon after duly giving notice of the time and place of such hearing.

NOW THEREFORE the Council of The Corporation of the District of Burnaby ENACTS as follows:

1. This By-Law may be cited as "BURNABY ZONING BY-LAW 1965, AMENDMENT BY-LAW NO. 2, 19 67".

2. The Map (hereinafter called "Map "A"") attached to and forming an integral part of By-Law No. 4742, being "Burnaby Zoning By-Law 1965", and designated as the Official Zoning Map of The Corporation of the District of Burnaby, is hereby amended according to the Map (hereinafter called "Map "B"") marginally numbered R.Z. 195, annexed to this By-Law, and in accordance with the explanatory legend, notations, references and boundaries designated, described, delimited and specified in particularity shown upon said Map "B"; and the various boundaries and districts shown upon said Map "B" respectively are an amendment of and in substitution for the respective districts, designated and marked on said Map "A" insofar as the same are changed, modified or varied thereby, and the said Map "A" shall be deemed to be and is hereby declared to be amended accordingly and the said Map "B" is hereby declared to be and shall form an integral part of said Map "A", as if originally incorporated therein, and shall be interpreted accordingly. Comprehensive development plan is attached hereto and marked "C".

Read a first time this 23rd day of January, 1967.

Read a second time this 23rd day of January, 1967.

Read a third time this 9th day of December 1968.

Reconsidered and adopted by an affirmative vote of at least two-thirds of all the members of the Council this 16th day of December 1968.



Robert H. Patten

M A Y O R

~~XXXXXXXXXX~~

J. Ward

D E P U T Y C L E R K

BY-LAW NO. 5059 BEING A BY-LAW TO AMEND BY-LAW
 NO. 4742 BEING THE BURNABY ZONING BY-LAW, 1965

PROPERTY REZONED TO: Comprehensive Development District (CD)

MAP "B"

Legal Description:

- (a) Lot 1, Except Reference Plans 6379/6173, Block 10, D.L. 136, Plan 3053
 - (b) Lot 15, S.D. 2/5, Block 10, D.L. 136, Plan 4417
 - (c) Lot 16, S.D. 4/5, Block 10, D.L. 136, Plan 4417
 - (d) Lots 17 and 18, S.D. 2/5, Block 10, D.L. 136, Plan 4417
 - (e) Lot 2, Except Reference Plan 22122, Block 10, D.L. 136, Plan 4417
 - (f) Lot 3, S.D. 2/5, Block 10, D.L. 136, Plan 4417
 - (g) Lot 4, Block 10, D.L. 136, Plan 4417
 - (h) D.L. 137, Except Part on By-law 42665 and Except Plan 21410, Plan 3073.
- and portions of road as outlined below.

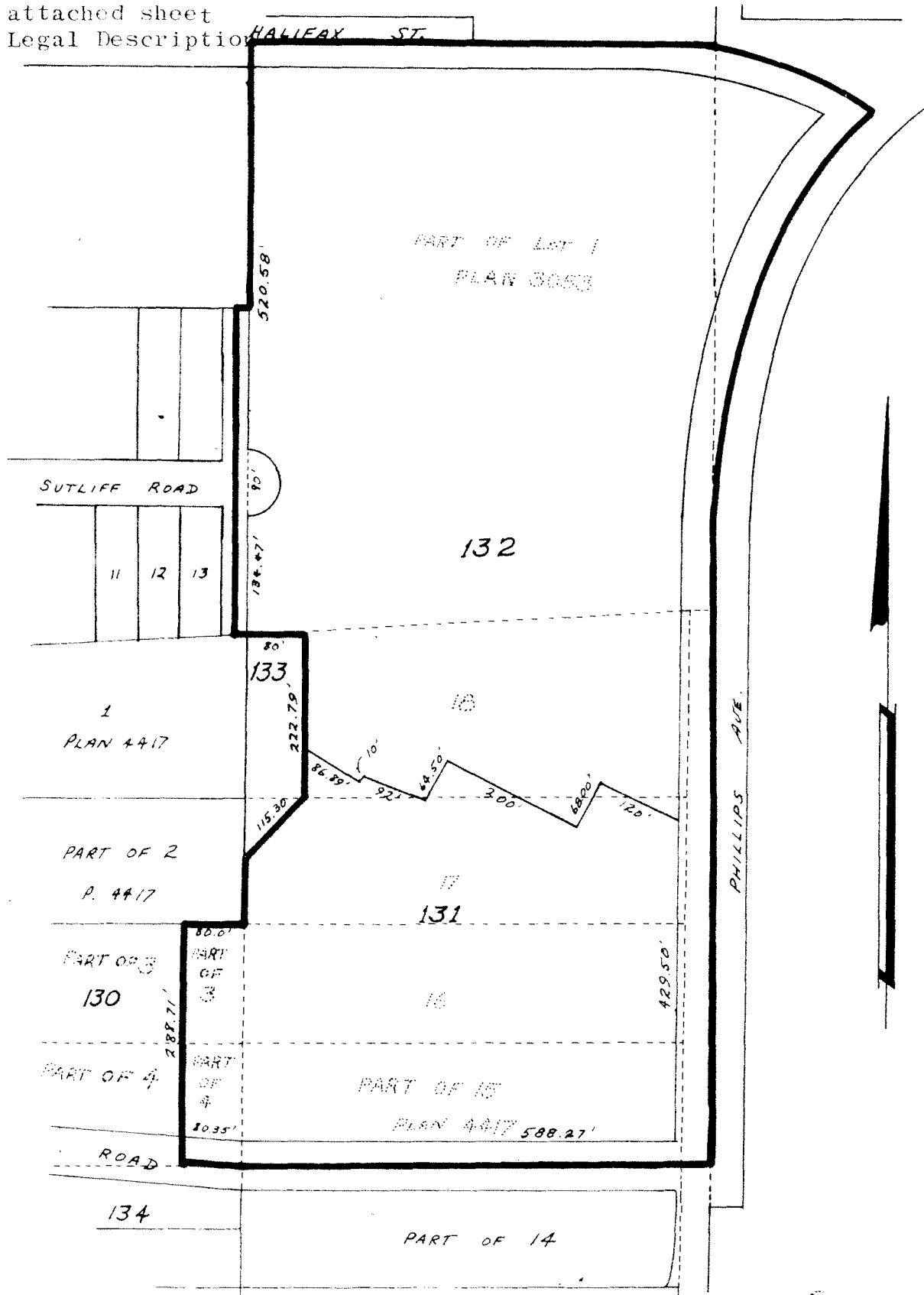
THE AREA(S) SHOWN ABOVE OUTLINED

IN BLACK (—) IS (ARE) REZONED: From Small Holdings District (A2)
 To Comprehensive Development District (CD)

PLANNING DEPARTMENT		CORPORATION OF THE DISTRICT OF BURNABY	
SCALE		OFFICIAL ZONING MAP	
DRAWN			
DATE	17/1/69		
		NO. R.Z. 195	

BY-LAW NO. 5059 BEING A BY-LAW TO AMEND BY-LAW
 NO. 4742 BEING THE BURNABY ZONING BY-LAW, 1965

PROPERTY REZONED TO: Comprehensive Development District (CD)
 See attached sheet
 for Legal Description



THE AREA(S) SHOWN ABOVE OUTLINED
 IN BLACK (—) IS (ARE) REZONED: From Small Holdings District (A2)
 To Comprehensive Development District (CD)

PLANNING DEPARTMENT		CORPORATION OF THE DISTRICT OF BURNABY	
SCALE	1" = 200'	OFFICIAL ZONING MAP	
DRAWN	S. M. A.		
DATE	12/1/69		
		NO. R.Z. 195	

See Comprehensive
Development Plan on
shelf in vault. [?]

R2 # 143/66

Dy. law # 5059.
