

THE CORPORATION OF THE DISTRICT OF BURNABY

BY-LAW NO. 4863

A BY-LAW to stop up and close to traffic a portion of highway.

WHEREAS the portion of highway shown marked in red colour on the plan hereunto annexed has been dedicated by plan as a public right-of-way.

AND WHEREAS no public moneys have been expended to improve the said highway.

AND WHEREAS it is deemed desirable and in the public interest to stop up and close to traffic the said highway.

NOW THEREFORE the Council of The Corporation of the District of Burnaby ENACTS as follows:

1. This By-law may be cited as "BURNABY ROAD CLOSING BY-LAW NO. 8, 1965".
2. The Council does hereby stop up and close to traffic that portion of highway between Walker Avenue and Liebly Street from Stanley Street to a point South of Burris Street, as shown marked in red colour on the plan hereunto annexed.
3. The Municipal Engineer is hereby authorized and empowered to erect such signs and barriers as may be required to effect the said closure and give warning of it.

Read a first time this 20th day of November, 1965.

Read a second time this 20th day of November, 1965.

Read a third time this 20th day of November, 1965.

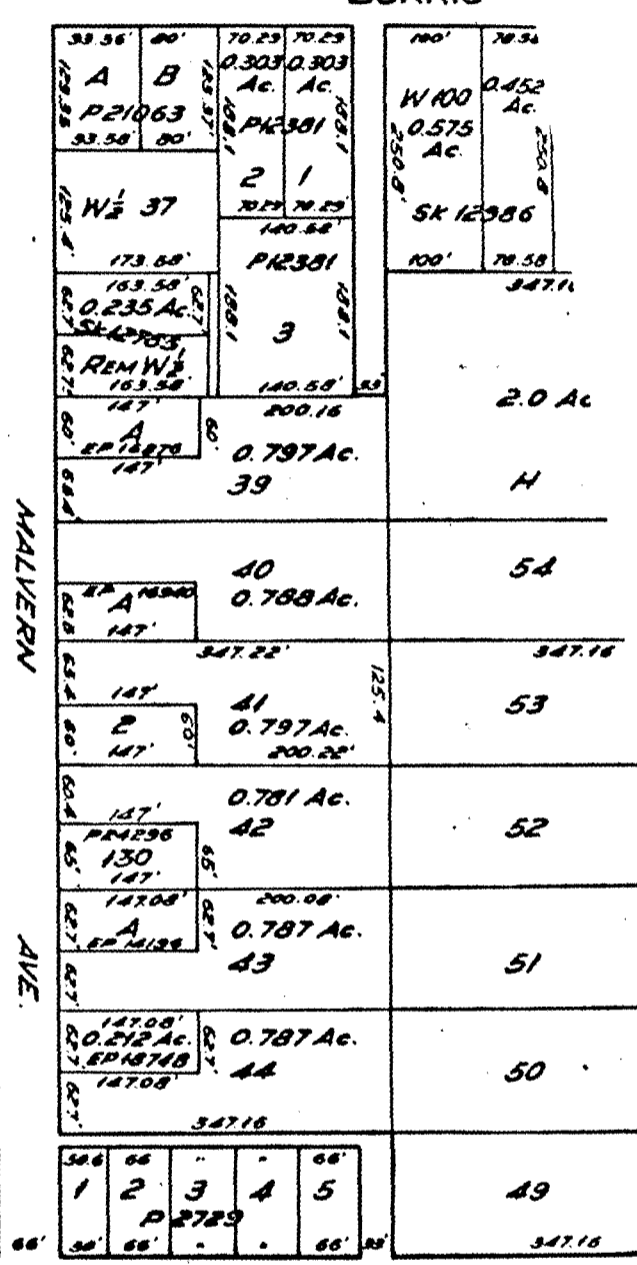
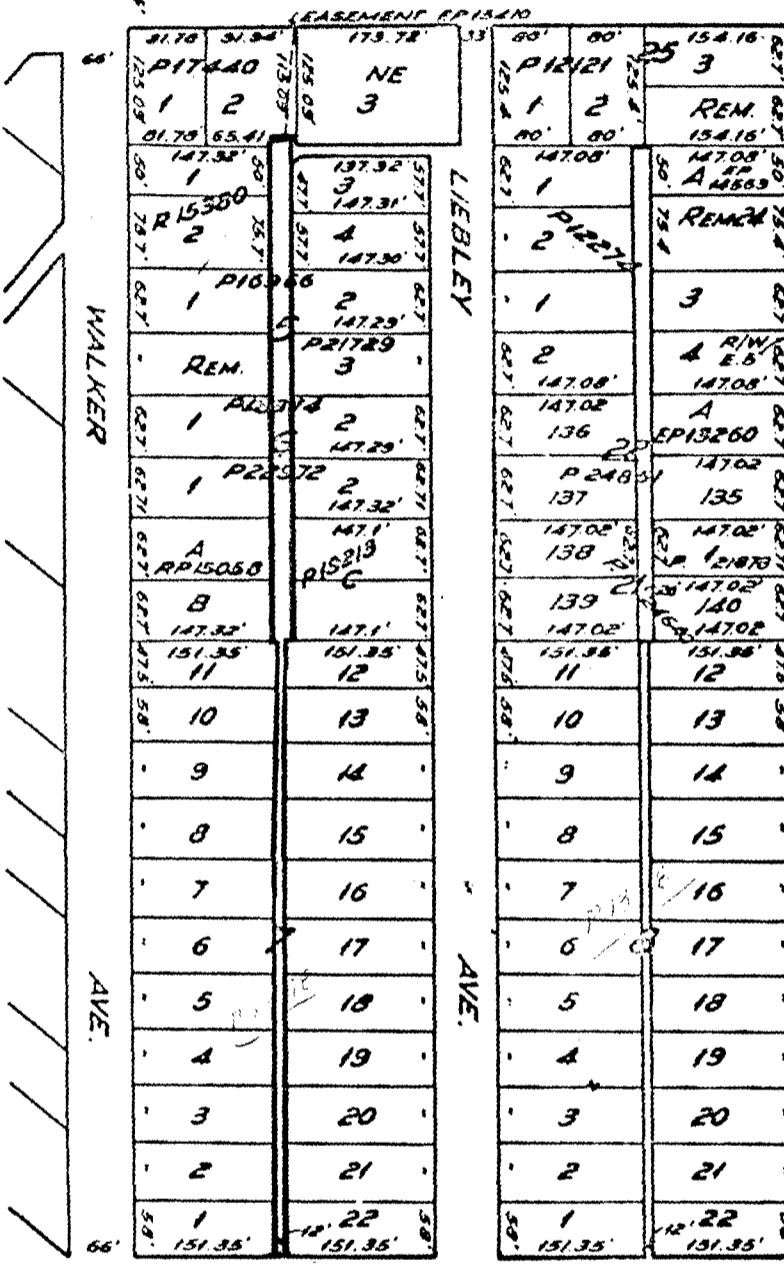
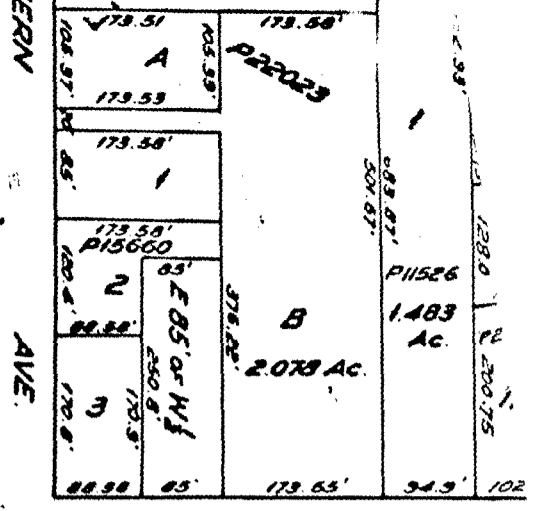
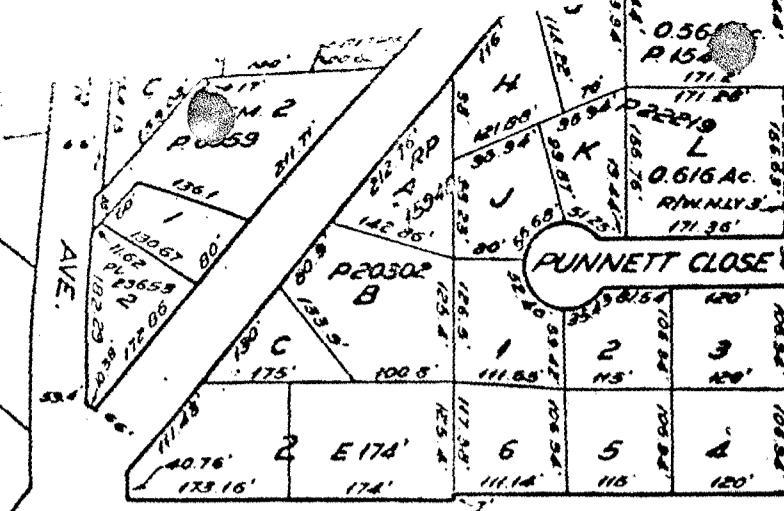
Reconsidered and adopted this 6th day of December,

1965.



*[Signature]*  
R E E V E

*[Signature]*  
C L E R K



DL 86

C  
O  
N  
T  
I  
N  
U  
E  
D