

THE CORPORATION OF THE DISTRICT OF BURNABY

BY-LAW NO. 4855

A BY-LAW to amend By-Law No 4742 being
"Burnaby Zoning By-Law 1965"

WHEREAS application for rezoning has ~~XXXX~~ been made to the Council

AND WHEREAS the Council has held a public hearing thereon after duly giving notice of the time and place of such hearing.

NOW THEREFORE the Council of The Corporation of the District of Burnaby ENACTS as follows:

1 This by-law may be cited as "BURNABY ZONING BY-LAW 1965, AMENDMENT BY-LAW NO. 39 , 1965 " /

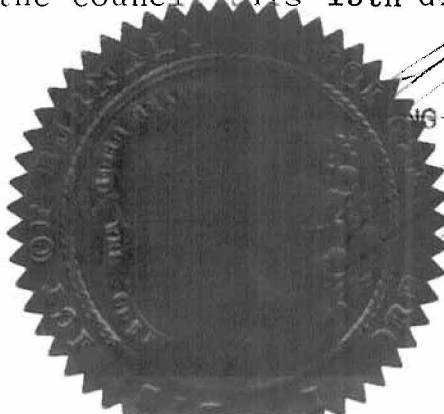
2 The Map (hereinafter called "Map "A"") attached to and forming an integral part of By-law No. 4742, being "Burnaby Zoning By-Law 1965" and designated as the Official Zoning Map of The Corporation of the District of Burnaby, is hereby amended according to the Maps (hereinafter called "Maps" "B"") marginally numbered ^{R.Z. 11} ~~R.Z. 12~~ ^{R.Z. 13} annexed to this by-law, and in accordance with the explanatory legend, notations, references and boundaries designated, described, delimited and specified in particularity shown upon said Maps" "B"; and the various boundaries and districts shown upon said Maps" "B" respectively are an amendment of and in substitution for the respective districts, designated and marked on said Map "A" insofar as the same are changed, modified or varied thereby, and the said Map "A" shall be deemed to be and is hereby declared to be amended accordingly and the said Maps" "B" is hereby declared to be and shall form an integral part of said Map "A", as if originally incorporated therein, and shall be interpreted accordingly.

Read a first time this 9th day of November 1965

Read a second time this 9th day of November 1965

Read a third time this 9th day of November 1965

Reconsidered and adopted by an affirmative vote of at least two-thirds of all the members of the Council this 15th day of November 1965



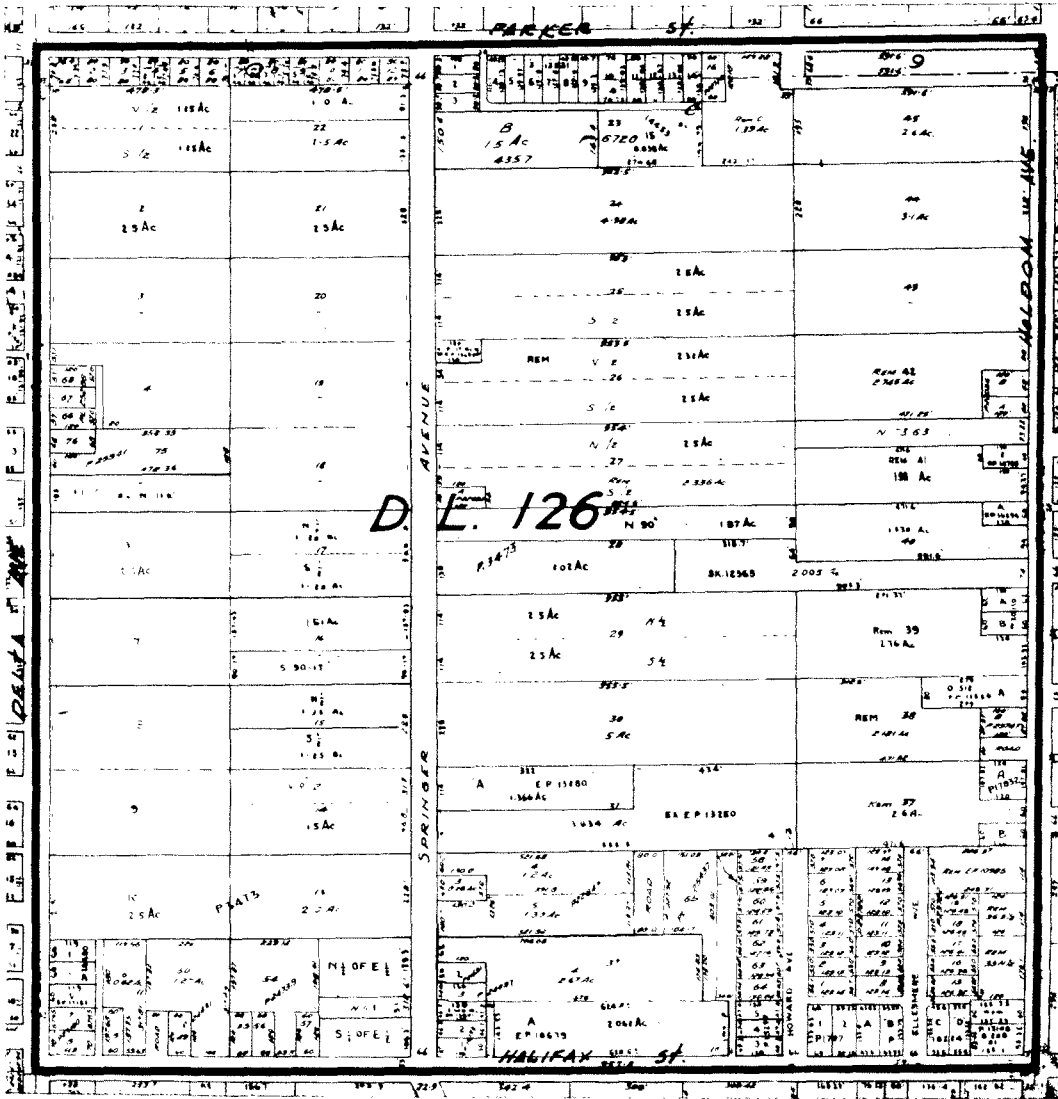
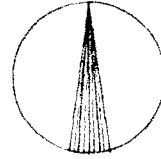
W. G. R E E V E

C L E R K

BY-LAW NO. 4855 BEING A BY-LAW TO AMEND BY-LAW NO. 4742 BEING THE BURNABY ZONING BY-LAW, 1965

PROPERTY REZONED TO: RESIDENTIAL (R2)

MAP "B"



THE LOT(S) SHOWN ABOVE OUTLINED IN BLACK (—) ARE REZONED: FROM SMALL HOLDINGS (A2) TO RESIDENTIAL (R2)

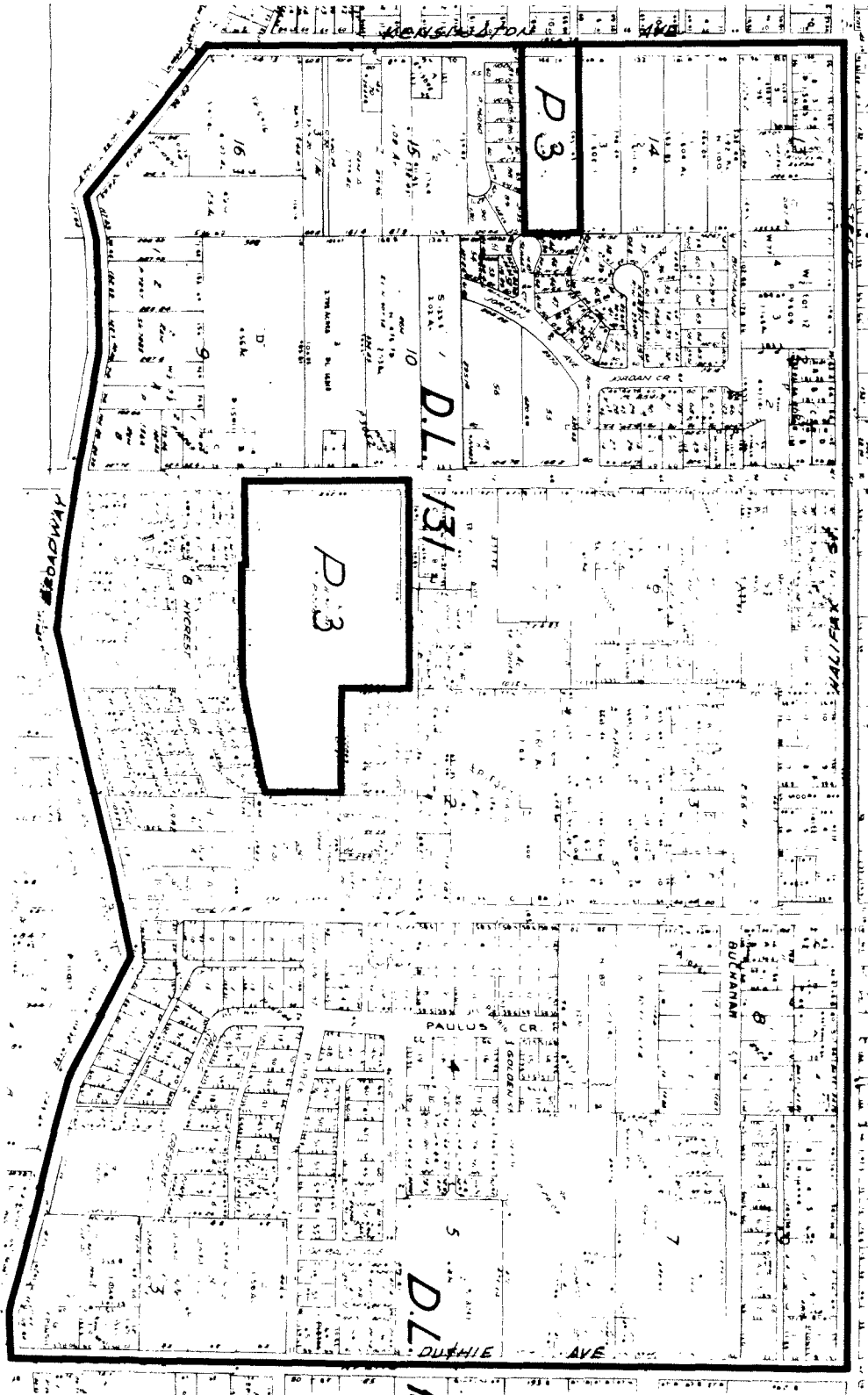
B-1817

PLANNING DEPARTMENT		CORPORATION OF THE DISTRICT OF BURNABY	
DATE		OFFICIAL ZONING MAP NO. R.Z. 11	
OWN			
TE			

BY-LAW NO. 1855 BEING A BY-LAW TO AMEND BY-LAW
 NO. 4742 BEING THE BURNABY ZONING BY-LAW, 1965

PROPERTY REZONED TO: RESIDENTIAL (R2)

MAP "B"



THE LOT(S) SHOWN ABOVE OUTLINED
 IN BLACK (—) ARE REZONED: FROM SMALL HOLDINGS (A2)
 TO RESIDENTIAL (R2) SAVE AND EXCEPT THOSE
 PROPERTIES ZONED PARK AND PUBLIC USE DISTRICT (P2)

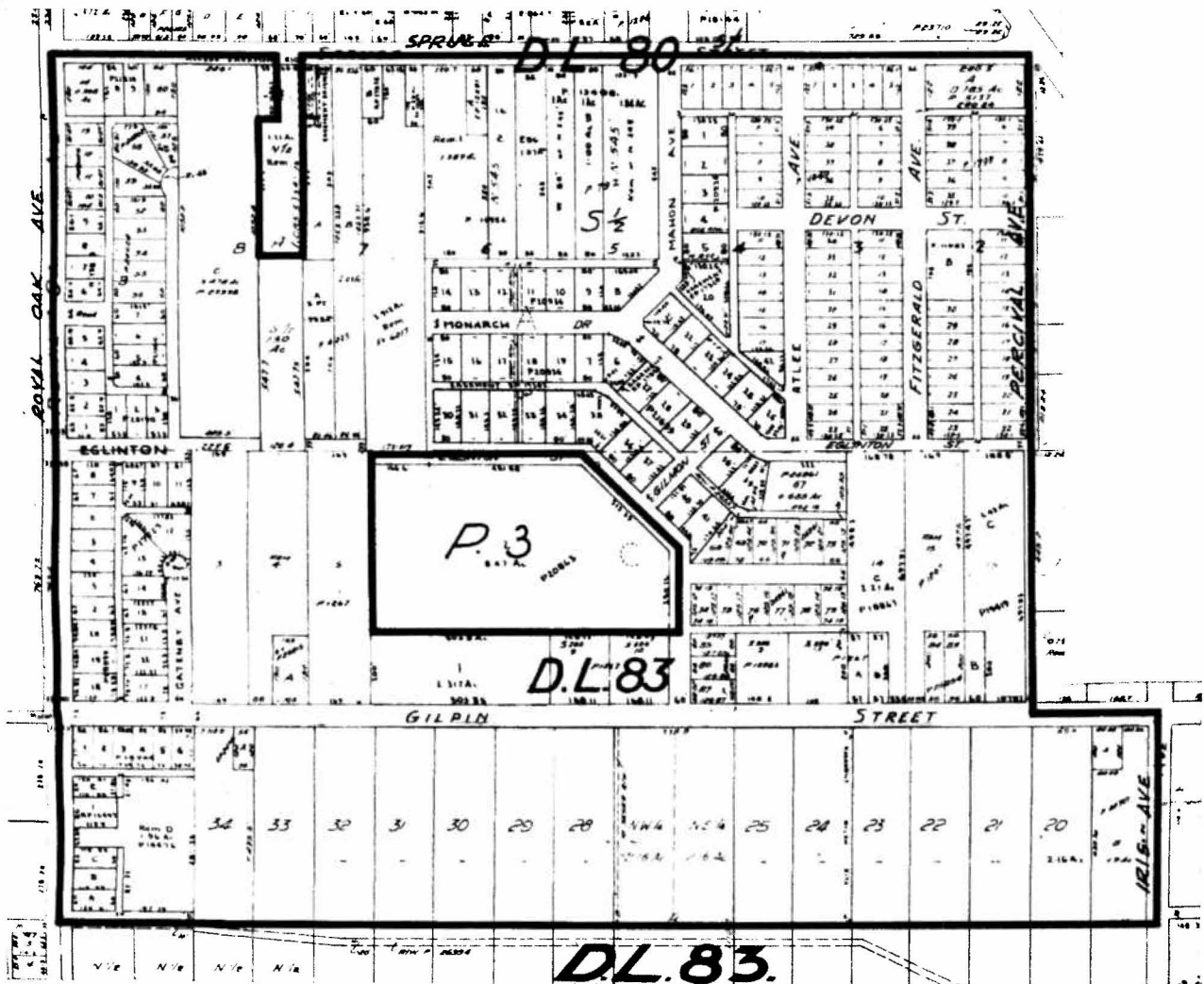
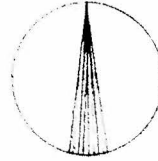
B-1817

PLANNING DEPARTMENT	CORPORATION OF THE DISTRICT OF BURNABY	
SCALE	OFFICIAL ZONING MAP	
DRAWN	NO. R.Z. 12	
DATE		

BY-LAW NO. 4855 BEING A BY-LAW TO AMEND BY-LAW NO. 4742 BEING THE BURNABY ZONING BY-LAW, 1965

PROPERTY REZONED TO: RESIDENTIAL (R2)

MAP "B"



THE LOT(S) SHOWN ABOVE OUTLINED IN BLACK (—) ARE REZONED: FROM SMALL HOLDINGS (A2) TO RESIDENTIAL (R2) SAVE AND EXCEPT those properties zoned PARK and PUBLIC USE DISTRICT (P3)

B-1817

PLANNING DEPARTMENT		CORPORATION OF THE DISTRICT OF BURNABY	
SCALE		OFFICIAL ZONING MAP	
DRAWN			
DATE			
		NO. R.Z. 13	