

THE CORPORATION OF THE DISTRICT OF BURNABY

BY-LAW NO. 4854

A BY-LAW to amend By-Law No. 4742, being  
"Burnaby Zoning By-Law 1965"

WHEREAS application for rezoning has ~~XXXX~~ been made to the  
Council

AND WHEREAS the Council has held a public hearing thereon after  
duly giving notice of the time and place of such hearing.

NOW THEREFORE the Council of The Corporation of the District of  
Burnaby ENACTS as follows:

1 This by-law may be cited as "BURNABY ZONING BY-LAW 1965, AMEND-  
MENT BY-LAW NO. 38, 1965"

2 The Map (hereinafter called "Map "A"") attached to and forming an  
integral part of By-law No. 4742, being "Burnaby Zoning By-Law 1965", and  
designated as the Official Zoning Map of The Corporation of the District of  
Burnaby, is hereby amended according to the Map (hereinafter called "Map "B"")  
marginally numbered R.Z. 19, annexed to this by-law, and in accordance with the  
explanatory legend, notations, references and boundaries designated, described,  
delimited and specified in particularity shown upon said Map "B"; and the  
various boundaries and districts shown upon said Map "B" respectively are an  
amendment of and in substitution for the respective districts, designated and  
marked on said Map "A" insofar as the same are changed, modified or varied  
thereby, and the said Map "A" shall be deemed to be and is hereby declared to  
be amended accordingly and the said Map "B" is hereby declared to be and shall  
form an integral part of said Map "A", as if originally incorporated therein,  
and shall be interpreted accordingly.

Read a first time this 9th day of November 1965

Read a second time this 9th day of November 1965

Read a third time this 9th day of November 1965

Reconsidered and adopted by an affirmative vote of at least two-  
thirds of all the members of the Council this 10th day of January ~~1965~~ 1966

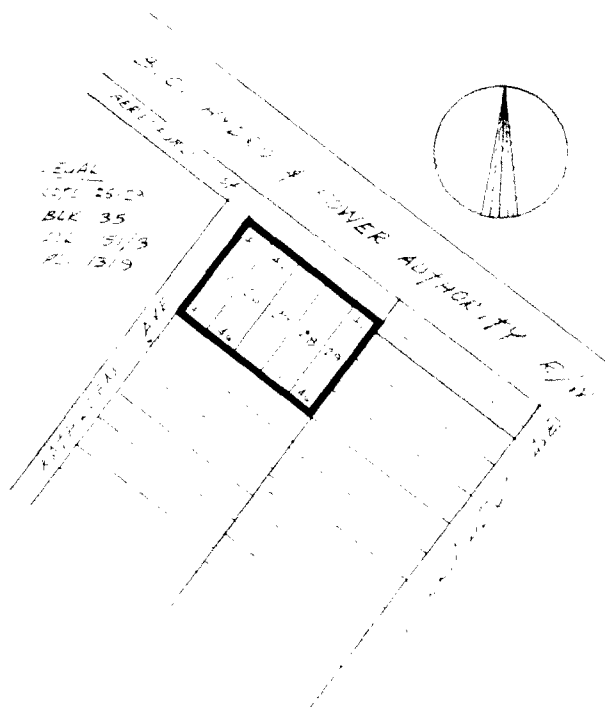


*[Handwritten signature]*  
R E E V E  
*[Handwritten signature]*  
C L E R K

**BY-LAW NO. 4854 BEING A BY-LAW TO AMEND BY-LAW  
NO. 4742 BEING THE BURNABY ZONING BY-LAW, 1965**

PROPERTY REZONED TO: SPECIAL INDUSTRIAL DISTRICT (M1)

MAP "B"



THE LOT(S) SHOWN ABOVE OUTLINED  
IN BLACK (—) ARE REZONED: FROM RESIDENTIAL DISTRICT 5 (R5)  
TO SPECIAL INDUSTRIAL DISTRICT (M1)

B-1617

PLANNING  
DEPARTMENT

CORPORATION OF THE DISTRICT OF BURNABY

**OFFICIAL ZONING MAP**

Jan. 10, 1966

NO. R.Z. 19