

THE CORPORATION OF THE DISTRICT OF BURNABY

BY-LAW NO. 4830

A BY-LAW to amend By-Law No 4742, being
"Burnaby Zoning By-Law 1965"

WHEREAS application for rezoning has/~~xxxx~~ been made to the Council

AND WHEREAS the Council has held a public hearing thereon after duly giving notice of the time and place of such hearing.

NOW THEREFORE the Council of The Corporation of the District of Burnaby ENACTS as follows:

1 This by-law may be cited as "BURNABY ZONING BY-LAW 1965, AMENDMENT BY-LAW NO. 34 , 1965 "

2 The Map (hereinafter called "Map "A"") attached to and forming an integral part of By-law No 4742, being "Burnaby Zoning By-Law 1965", and designated as the Official Zoning Map of The Corporation of the District of Burnaby, is hereby amended according to the Map (hereinafter called "Map "B"") marginally numbered R.Z. 17 , annexed to this by-law, and in accordance with the explanatory legend, notations, references and boundaries designated, described, delimited and specified in particularity shown upon said Map "B"; and the various boundaries and districts shown upon said Map "B" respectively are an amendment of and in substitution for the respective districts, designated and marked on said Map "A" insofar as the same are changed, modified or varied thereby, and the said Map "A" shall be deemed to be and is hereby declared to be amended accordingly and the said Map "B" is hereby declared to be and shall form an integral part of said Map "A", as if originally incorporated therein, and shall be interpreted accordingly.

Read a first time this 18th day of October 1965
Read a second time this 18th day of October 1965
Read a third time this 29th day of November 1965

Reconsidered and adopted by an affirmative vote of at least two-thirds of all the members of the Council this 6th day of December 1965

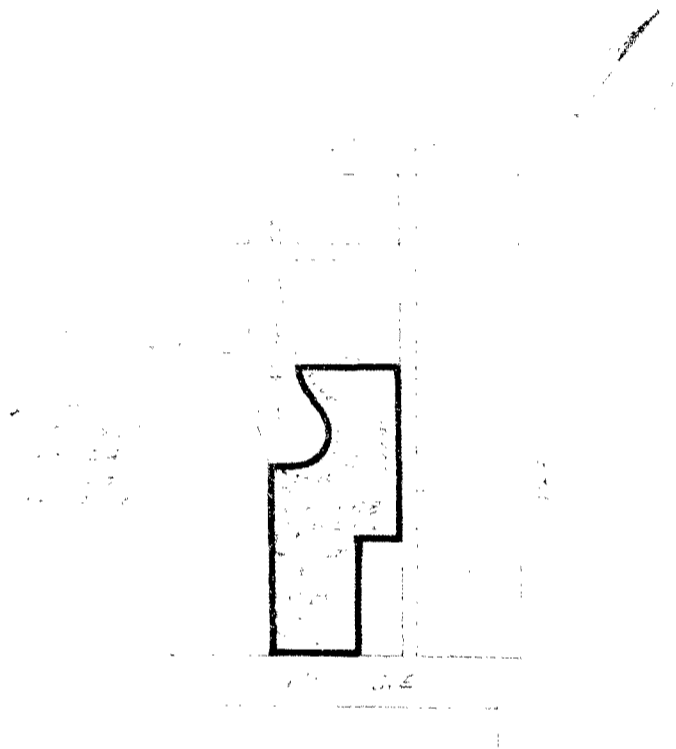


[Signature]
REEVE
[Signature]
CLERK

BY-LAW NO. BEING A BY-LAW TO AMEND BY-LAW
 NO 4742 BEING THE BURNABY ZONING BY-LAW, 1977

THE REALTY SHOWN ON THIS MAP IS THE PROPERTY OF THE DISTRICT OF BURNABY

MAP "B"



THE LOT(S) SHOWN ABOVE OUTLINED
 IN BLACK (—) ARE REZONED: FROM MULTIPLE FAMILY RESIDENTIAL DISTRICT TWO (RM2)
 TO MULTIPLE FAMILY RESIDENTIAL DISTRICT ONE (RM1)

B-1817

PLANNING DEPARTMENT	CORPORATION OF THE DISTRICT OF BURNABY
DATE	<p style="text-align: center;">OFFICIAL ZONING MAP</p> <p style="text-align: right;">NO. R.Z. 17</p>