

THE CORPORATION OF THE DISTRICT OF BURNABY

BY-LAW NO . 4829

A BY-LAW to amend By-Law No 4742, being
"Burnaby Zoning By-Law 1965"

WHEREAS application for rezoning has ~~xxxx~~ been made to the
Council

AND WHEREAS the Council has held a public hearing thereon after
duly giving notice of the time and place of such hearing.

NOW THEREFORE the Council of The Corporation of the District of
Burnaby ENACTS as follows:

1. This by-law may be cited as "BURNABY ZONING BY-LAW 1965, AMEND-
MENT BY-LAW NO. 33 , 19 65 "

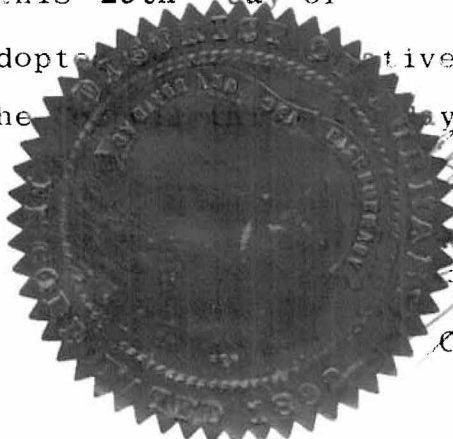
2. The Map (hereinafter called "Map "A"") attached to and forming an
integral part of By-law No 4742, being "Burnaby Zoning By-Law 1965", and
designated as the Official Zoning Map of The Corporation of the District of
Burnaby, is hereby amended according to the Map (hereinafter called "Map "B"")
marginally numbered R.Z. 16, annexed to this by-law, and in accordance with the
explanatory legend, notations, references and boundaries designated, described,
delimited and specified in particularity shown upon said Map "B"; and the
various boundaries and districts shown upon said Map "B" respectively are an
amendment of and in substitution for the respective districts, designated and
marked on said Map "A" insofar as the same are changed, modified or varied
thereby, and the said Map "A" shall be deemed to be and is hereby declared to
be amended accordingly and the said Map "B" is hereby declared to be and shall
form an integral part of said Map "A", as if originally incorporated therein,
and shall be interpreted accordingly.

Read a first time this 18th day of October 1965

Read a second time this 18th day of October 1965

Read a third time this 29th day of November 1965

Reconsidered and adopted by a two-thirds vote of at least two-
thirds of all the members of the Council on the 1st day of December 1965

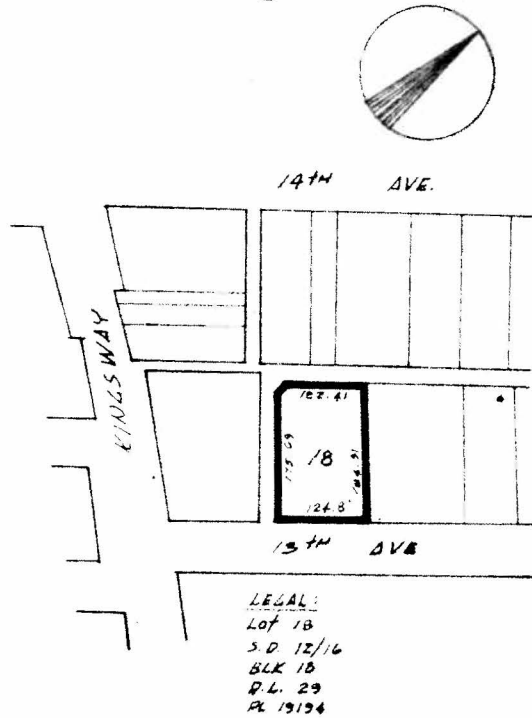


[Signature]
E E V E
[Signature]
C L E R K

BY-LAW NO. 4829 BEING A BY-LAW TO AMEND BY-LAW
 NO. 4742 BEING THE BURNABY ZONING BY-LAW, 1965

PROPERTY REZONED TO: MULTIPLE FAMILY RESIDENTIAL DISTRICT ONE (RM1)

MAP "B"



THE LOT(S) SHOWN ABOVE OUTLINED
 IN BLACK (—) ARE REZONED: FROM MULTIPLE FAMILY RESIDENTIAL DISTRICT TWO (RM2)
 TO MULTIPLE FAMILY RESIDENTIAL DISTRICT ONE (RM1)

B-1817

PLANNING
 DEPARTMENT

CORPORATION OF THE DISTRICT OF BURNABY

SCALE

DRAWN

DATE

OFFICIAL ZONING MAP

NO. R.Z. 18