

THE CORPORATION OF THE DISTRICT OF BURNABY

BY-LAW NO. 4825 ✓

A BY-LAW to amend By-Law No. 4742, being  
"Burnaby Zoning By-Law 1965".

WHEREAS application for rezoning has/~~have~~ been made to the  
Council.

AND WHEREAS the Council has held a public hearing thereon after  
duly giving notice of the time and place of such hearing.

NOW THEREFORE the Council of The Corporation of the District of  
Burnaby ENACTS as follows:

1. This by-law may be cited as "BURNABY ZONING BY-LAW 1965, AMEND-  
MENT BY-LAW NO. 29, 1965". ✓

2. The Map (hereinafter called "Map "A"") attached to and forming an  
integral part of By-law No. 4742, being "Burnaby Zoning By-Law 1965", and  
designated as the Official Zoning Map of The Corporation of the District of  
Burnaby, is hereby amended according to the Map (hereinafter called "Map "B""),  
marginally numbered R.Z. 78 ✓, annexed to this by-law, and in accordance  
with the explanatory legend, notations, references and boundaries designated,  
described, delimited and specified in particularity shown upon said Map "B"; and  
the various boundaries and districts shown upon said Map "B" respectively are  
an amendment of and in substitution for the respective districts, designated  
and marked on said Map "A" insofar as the same are changed, modified or varied  
thereby, and the said Map "A" shall be deemed to be and is hereby declared to  
be amended accordingly and the said Map "B" is hereby declared to be and shall  
form an integral part of said Map "A", as if originally incorporated therein,  
and shall be interpreted accordingly.

Read a first time this 18th day of October, 1965. ✓

Read a second time this 18th day of October, 1965. ✓

Read a third time this 13th day of February, 1967. ✓

Reconsidered and adopted by an affirmative vote of at least two-  
thirds of all the members of the Council this 20th day of February, 1967. ✓



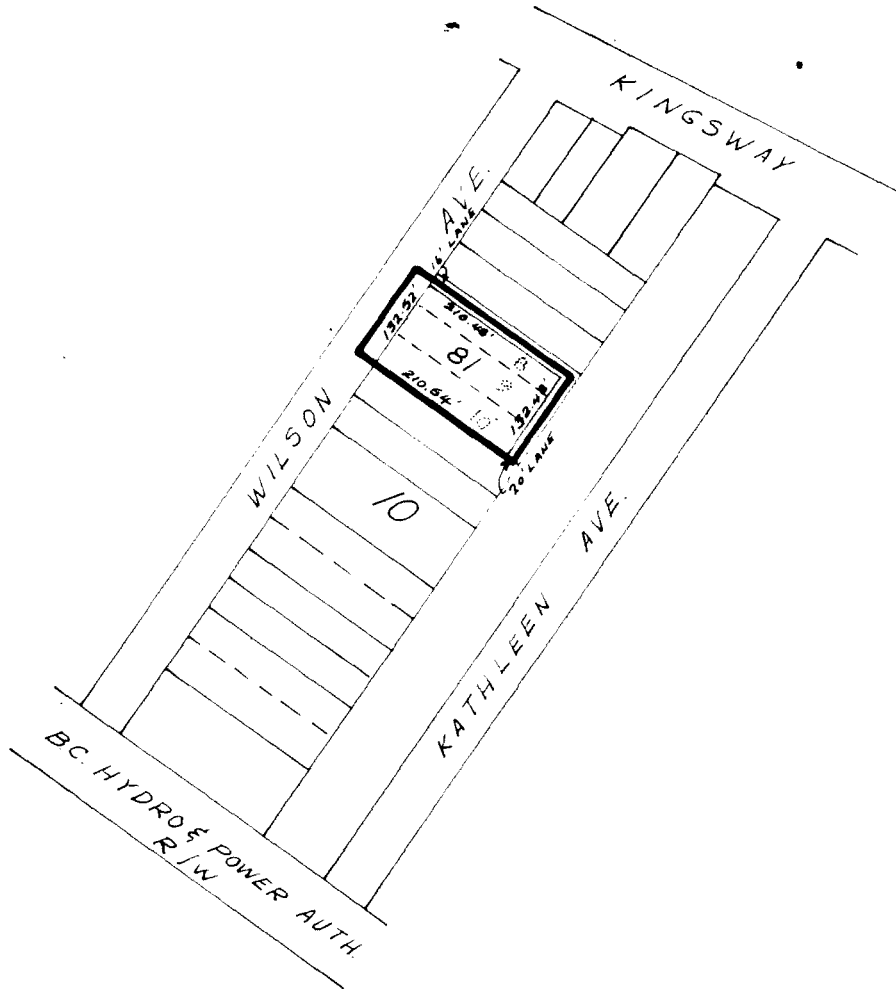
*[Handwritten Signature]*  
R E E V E  
*[Handwritten Signature]*  
C L E R K

**BY-LAW NO. 4825 BEING A BY-LAW TO AMEND BY-LAW NO. 4742 BEING THE BURNABY ZONING BY-LAW, 1965**

PROPERTY REZONED TO: MULTIPLE FAMILY RESIDENTIAL DISTRICT THREE (RM3)

MAP B

Legal: Lot 81, D.L. 151/3, Plan 30645 and portions of lane 1 and road as outlined below (formerly Lots 8 to 10 inclusive, S. D. 6, Block 10, D.L.'s 151/3, Plan 2389).



THE AREA(S) SHOWN ABOVE OUTLINED IN BLACK (—) IS(ARE) REZONED: FROM RESIDENTIAL DISTRICT FIVE (R5) TO MULTIPLE FAMILY RESIDENTIAL DISTRICT THREE (RM3)

B-1817

PLANNING DEPARTMENT		CORPORATION OF THE DISTRICT OF BURNABY	
SCALE		<b>OFFICIAL ZONING MAP</b>	
DRAWN			
DATE	Feb. 20, 1967		
		NO. R.Z. 78	