

THE CORPORATION OF THE DISTRICT OF BURNABY

BY-LAW NO. 4787

A BY-LAW to amend By-law No. 4742, being
"Burnaby Zoning By-law 1965".

WHEREAS applications for rezoning have been made to the
Council.

AND WHEREAS the Council has held a public hearing thereon
after duly giving notice of the time and place of such hearing.

NOW THEREFORE the Council of The Corporation of the District
of Burnaby ENACTS as follows:

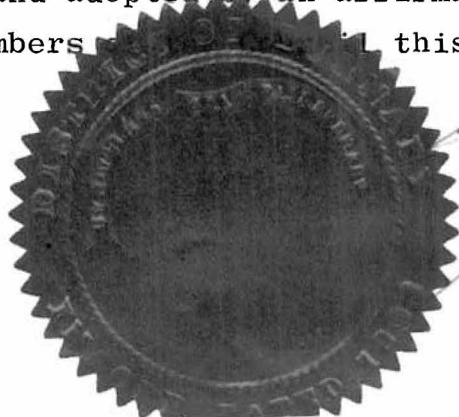
1. This By-law may be cited as "BURNABY ZONING BY-LAW 1965,
AMENDMENT BY-LAW NO. 3, 1965".
2. The Map (hereinafter called "Map"A") attached to and forming
an integral part of By-law No. 4742, being "Burnaby Zoning By-Law 1965",
and designated as the Official Zoning Map of The Corporation of the
District of Burnaby, is hereby amended according to the Map (hereinafter
called "Map "B""), marginally numbered R.Z.3 annexed to this by-law, and
in accordance with the explanatory legend, notations, references and
boundaries designated, described, delimited and specified in particular-
ity shown upon said Map "B"; and the various boundaries and districts
shown upon said Map "B" respectively are an amendment of and in
substitution for the respective districts designated and marked on said
Map "A" insofar as the same are changed, modified or varied thereby, and
the said Map "A" shall be deemed to be and is hereby declared to be
amended accordingly and the said Map "B" is hereby declared to be and
shall form an integral part of said Map "A" as if originally incorporated
therein, and shall be interpreted accordingly.

Read a first time this 13th day of September, 1965.

Read a second time this 13th day of September, 1965.

Read a third time this 13th day of September, 1965.

Reconsidered and adopted by an affirmative vote of at least
two-thirds of all the members of the Council on this 20th day of September, 1965.

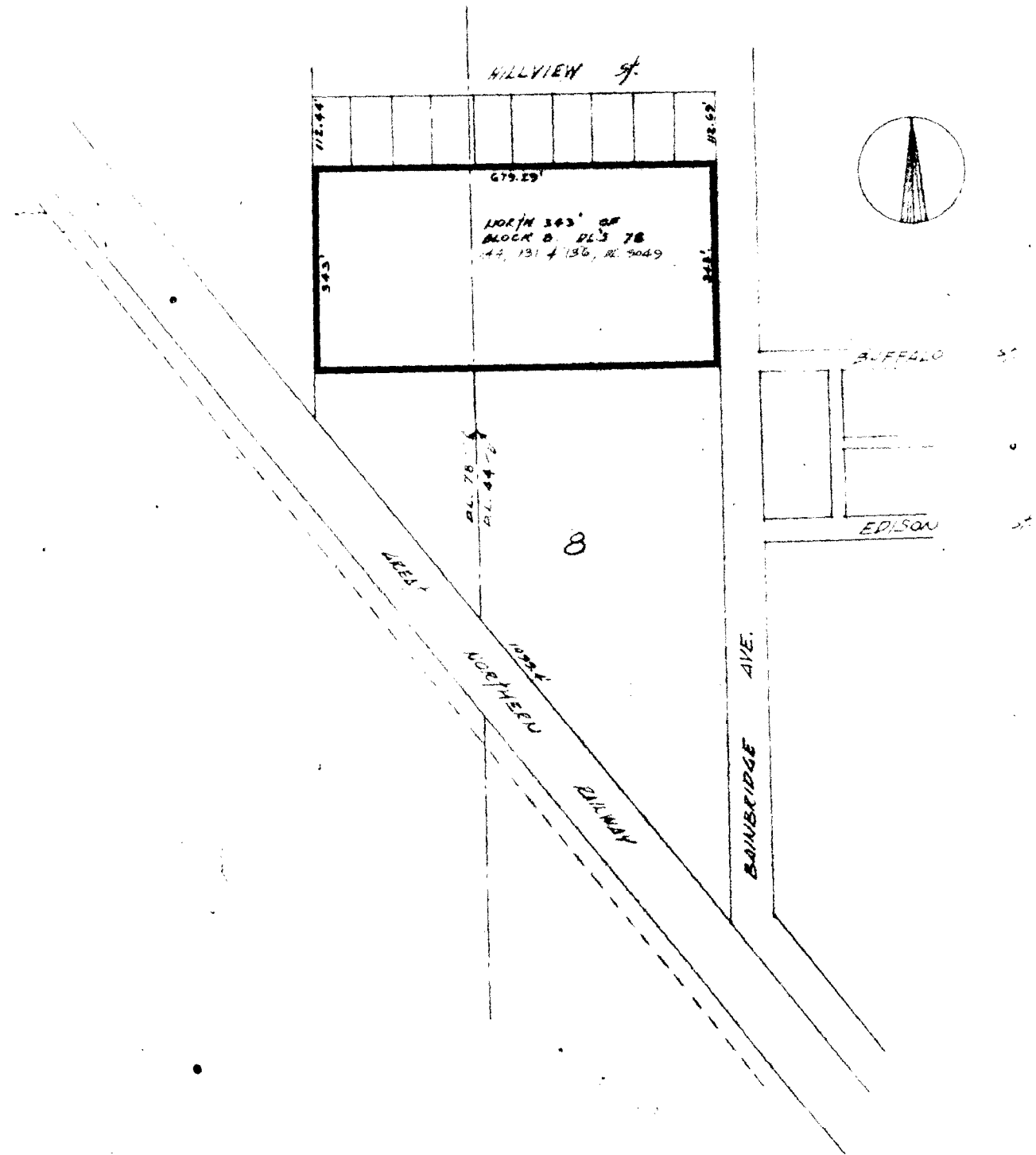


R. E. V. E.
R E E V E

C. L. E. R. K.
C L E R K

BY-LAW NO. 4787 BEING A BY-LAW TO AMEND BY-LAW NO. 4742 BEING THE BURNABY ZONING BY-LAW, 1965

PROPERTY REZONED TO: *COMMERCIAL*
 MAP "B"



THE LOT(S) SHOWN ABOVE OUTLINED IN BLACK (—) ARE REZONED: *COMMERCIAL*

B-1817

ANNING PARTMENT		CORPORATION OF THE DISTRICT OF BURNABY	
E		OFFICIAL ZONING MAP	
V			
		NO. R.Z. 3	