

THE CORPORATION OF THE DISTRICT OF BURNABY

BY-LAW NO. 4754

A BY-LAW to amend By-law No. 4742, being
"Burnaby Zoning By-law 1965".

WHEREAS applications for zoning have been made to
the Municipal Council.

AND WHEREAS the Municipal Council has held a public
hearing thereon after duly giving notice of the time and place
of such hearing.

NOW THEREFORE the Municipal Council of The Corporation
of the District of Burnaby ENACTS as follows:

1. This by-law may be cited as "BURNABY ZONING BY-LAW
1965, AMENDMENT BY-LAW NO. 1, 1965".
2. The Map (hereinafter called "Map "A"") attached to and
forming an integral part of By-law No. 4742, being "Burnaby Zoning
By-law 1965", and designated as the Official Zoning Map of The
Corporation of the District of Burnaby, is hereby amended according
to the Map (hereinafter called "Map "B""), marginally numbered R.Z.I
annexed to this by-law, and in accordance with the explanatory
legend, notations, references and boundaries designated, described,
delimited and specified in particularity shown upon said Map "B";
and the various boundaries and districts shown upon said Map "B"
respectively are an amendment of and in substitution for the respective
districts designated and marked on said Map "A" insofar as the same
are changed, modified or varied thereby, and the said Map "A" shall
be deemed to be and is hereby declared to be amended accordingly and
the said Map "B" is hereby declared to be and shall form an integral
part of said Map "A" as if originally incorporated therein, and
shall be interpreted accordingly.

Read a first time this 21st day of June, 1965.

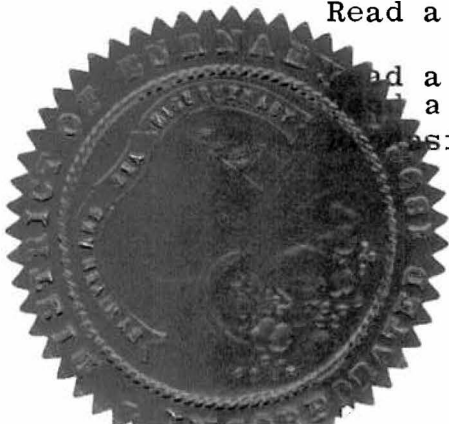
Read a second time this 21st day of June, 1965.

Read a third time this 21st day of June, 1965.

Considered and adopted this 9th day of July, 1965.

R. E. V. E.

DEPUTY CLERK



BY-LAW NO. 4754

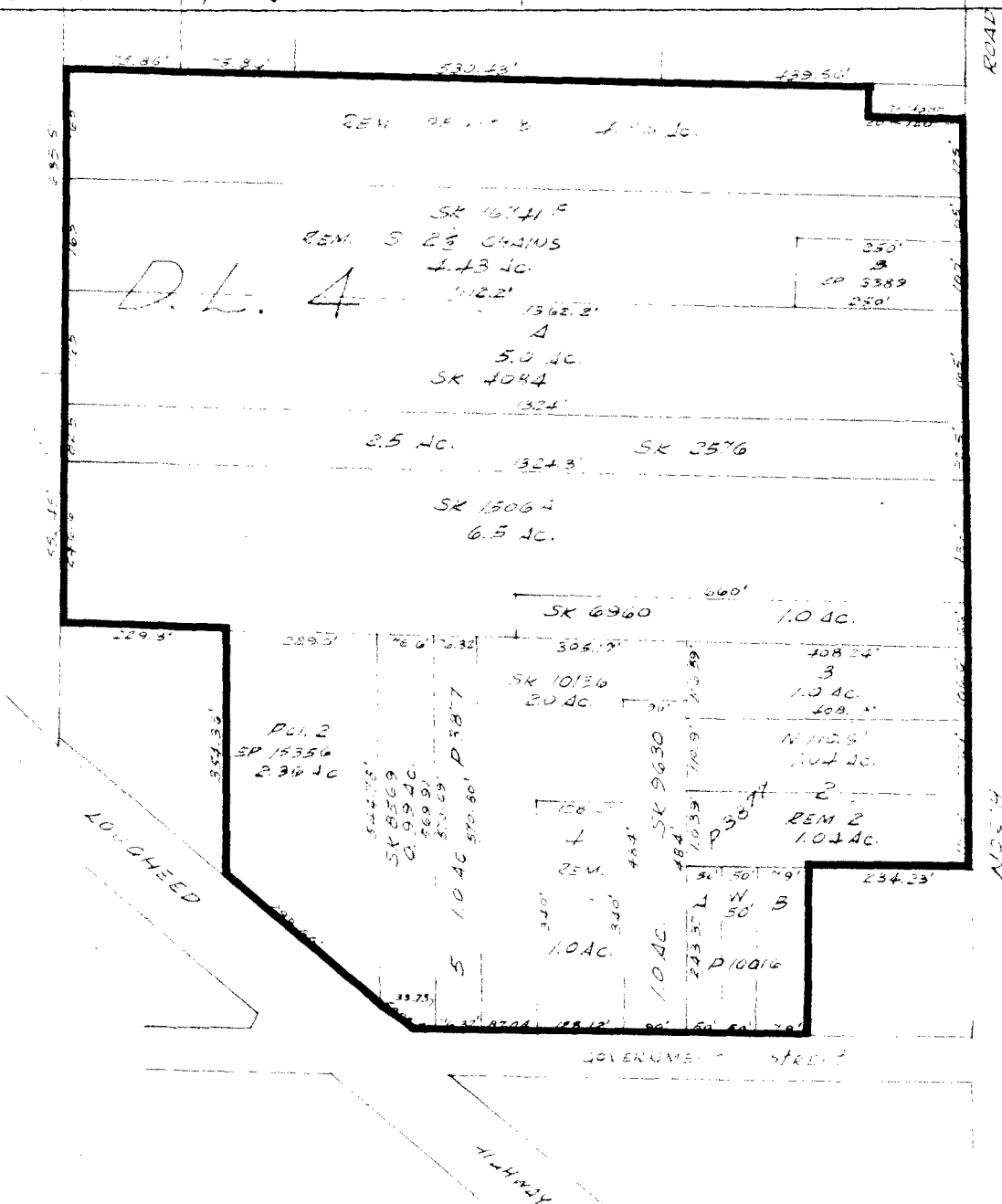
BEING A BY-LAW TO AMEND BY-LAW

NO. 4742 BEING THE BURNABY ZONING BY-LAW, 1965

PROPERTY REZONED TO: GENERAL COMMERCIAL DISTRICT (C3)

Pcl."C" (Ref.Pl.with fee 16741F) of Lot 8, Lot 4, Gp.1, Plan 845, S.&E. the S2½ chans and S.&E.Pcl."G" & Lane (Ex.Pl.14388) N.W.D.
 The S2½ chans of a 10 acre part (Ref.Pl.with fee, 16741F) of Lot 8, Lot 4, Gp.1, Plan 845, NWD, S&E Pcl."B" (Ex.Pl.13389) NWD.
 Pcl."B" (Ex.Pl.13389) of Lot 8, Lot 4, Plan 845, Gp.1, NWD
 Pcl."A" (Ex.Pl.4084) of Lot 8 of Lot 4, Gp.1, Plan 845, NWD.
 Pcl."J" (Ex.Pl.2576) of Blk.8, Lot 4, Gp.1, Plan 845, NWD.
 Pcl."G" (Ref.Pl.1506A) of Lot 8 of Lot 4, Gp.1, Plan 845, except Pcl.1 (Ref.Pl.6960) NWD.
 Pcl.1 (Ref.Pl.6960) of Lot 8 of Lot 4, Gp.1, Plan 845, NWD.
 Lot 3 of Lots 1&8 of Lot 4, Gp.1, Pl. 3877, NWD.
 N.110.9ft. of Lot 2, Pcl."B" of Lots 1&8 of Lot 4, Gp.1, Plan 3877, NWD.
 Lot 2 of Pcl."B" of Lots 1&8 of Lot 4, Grp.1, Plan 3877 S.&E. the N.110.9 ft. thereof, NWD.

Lot "B" of part of Lot 1 of Lots 1&8, of Lot 4, Gp.1, Plan 10016, except the W.50 ft. thereof, NWD.
 The W.50 ft. of Lot "B" of part of Lot 1 of parts of Lots 1&8, of Lot 4, Gp.1, Plan 10016, NWD.
 Lot "A" of part of Lot 1 of parts of Lots 1&8, of Lot 4, Gp.1, Plan 10016, NWD.
 Pcl."C" (Ex.Pl.9360) of a 10.36 acre ptn. of Lots 1&8 of Lot 4, Gp.1, Plan 3877, NWD.
 Lot 4, of Lots 1&8, Lot 4, Gp.1, Plan 3877, except Pcl."C" (Ex.Pl.9360) & except Pcl."D" (Ex.Pl.10136) NWD.
 Pcl."D" (Ex.Pl.10136) of Lot 4 of Lots 1&8 of Lot 4, Gp.1, Plan 3877, NWD.
 Lot 5, Lots 1&8, of Lot 4, Gp.1, Plan 3877, NWD.
 Pcl.1 (Ex.Pl.8569) of Pcl."J" of Lots 1&8 of Lot 4, Gp.1, Plan 845, NWD.
 Pcl.2 (Ex.Pl.15356) of Pcl."J" of Lots 1&8 of Lot 4, Gp.1, Plan 845, NWD.



THE LOT(S) SHOWN ABOVE OUTLINED IN BLACK (—) ARE REZONED: FROM SMALL HOLDINGS DISTRICT (A-2) AND NEIGHBOURHOOD COMMERCIAL DISTRICT (C-1) TO GENERAL COMMERCIAL DISTRICT (C-3)

B-1817

PLANNING DEPARTMENT

CORPORATION OF THE DISTRICT OF BURNABY

SCALE
DRAWN

OFFICIAL ZONING MAP