

**CITY OF BURNABY**

**BYLAW NO. 14622**

A BYLAW to close and remove the dedication of  
a certain portion of highway

WHEREAS pursuant to section 40 of the *Community Charter* and section 120 of the *Land Title Act*, Council may by bylaw close part of a highway to traffic and remove the dedication of that part of the highway;

AND WHEREAS Council, before adopting this Bylaw, has caused the required statutory public notice of its intention to be given by advertisement;

AND WHEREAS Council deems it expedient and in the public interest to stop up and close to traffic and remove the dedication of that portion of highway more particularly hereinafter described,

NOW THEREFORE the Council of the City of Burnaby ENACTS as follows:

1. This Bylaw may be cited as **BURNABY HIGHWAY CLOSURE BYLAW NO. 7, 2023.**
2. ALL AND SINGULAR those certain parcels or tracts of land, situate, lying and being in the City of Burnaby, in the Province of British Columbia, more particularly known and described as those portions of road dedicated in:
  - (a) District Lot 125, Group 1, New Westminster District, by Plan 3347, and containing 127.8m<sup>2</sup>, shown heavily outlined; and
  - (b) District Lot 125, Group 1, New Westminster District, by Plan 12069, and containing 92.9m<sup>2</sup>, shown heavily outlined;

on Reference Plan EPP133694 (hereinafter called “the closed portions of road”), prepared by Patrick Korabek, B.C.L.S., a copy of which is hereunto annexed, is hereby closed to all types of traffic.

3. The dedication of the closed portion of road as highway is removed.

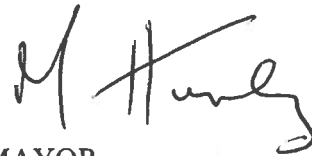
FIRST READING this 4<sup>th</sup> day of December, 2023

SECOND READING this 4<sup>th</sup> day of December, 2023

THIRD READING this 4<sup>th</sup> day of December, 2023

PUBLIC NOTICE DATES this 14<sup>th</sup> day of December, 2023 and 21<sup>st</sup> day of December, 2023

ADOPTION 15<sup>th</sup> day of January, 2024

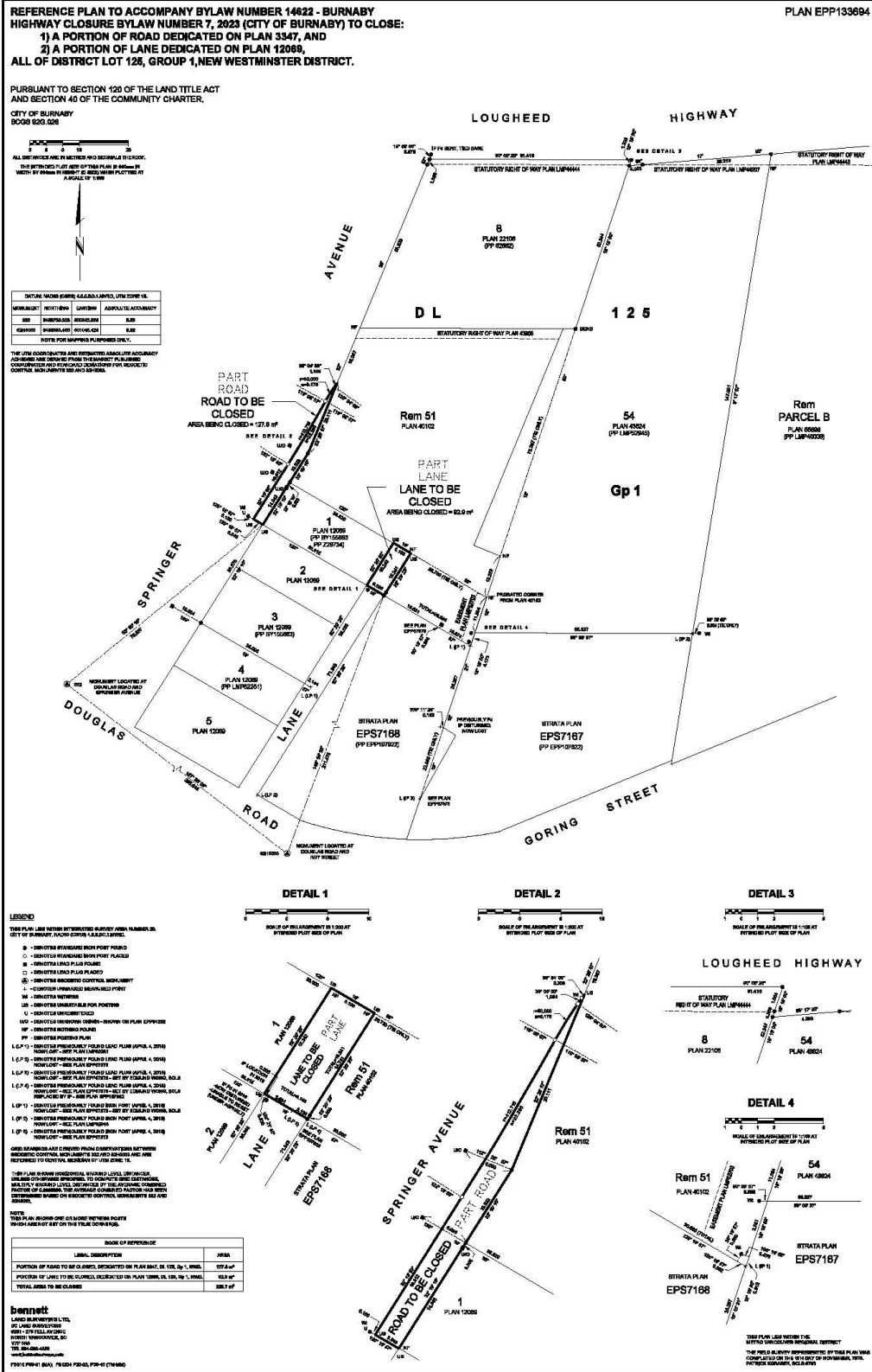


MAYOR



CORPORATE OFFICER

Schedule "A"



REFERENCE PLAN TO ACCOMPANY BYLAW NUMBER 14622 - BURNABY  
HIGHWAY CLOSURE BYLAW NUMBER 7, 2023 (CITY OF BURNABY) TO CLOSE:  
1) A PORTION OF ROAD DEDICATED ON PLAN 3347, AND  
2) A PORTION OF LANE DEDICATED ON PLAN 12068,  
ALL OF DISTRICT LOT 126, GROUP 1, NEW WESTMINSTER DISTRICT.

PLAN EPP133694

PURSUANT TO SECTION 120 OF THE LAND TITLE ACT  
AND SECTION 40 OF THE COMMUNITY CHARTER,  
CITY OF BURNABY  
DOCS 826 028

ALL DIMENSIONS ARE IN METRES AND DECIMALS THEREOF.  
THE BOUNDARY LINE AND OTHER PLAN FEATURES BY  
WHICH THIS PLAN IS BOUND TO BE CONSIDERED AS  
A SOURCE OF TRUTH

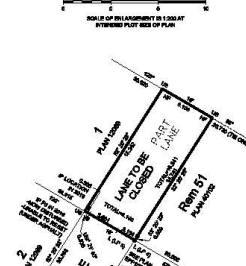


SYMBOL	DESCRIPTION
—	BOUNDARY LINE
- - - -	BOUNDARY LINE
...	BOUNDARY LINE
—	BOUNDARY LINE

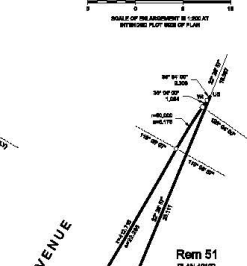
NOTE FOR SURVEY PURPOSES ONLY.

THE PLAN IS TO BE INTERPRETED IN ACCORDANCE WITH THE  
LATEST EDITIONS OF THE SURVEY ACT AND REGULATIONS  
AND THE RULES OF PRACTICE OF THE SURVEYORS  
AND ENGINEERS ACT AND REGULATIONS FOR REGISTERED  
CONSULTANTS AND ENGINEERS.

DETAIL 1



DETAIL 2



DETAIL 3



DETAIL 4

