

CITY OF BURNABY

BYLAW NO. 14539

A BYLAW to close and remove the dedication of
a certain portion of highway

WHEREAS pursuant to section 40 of the *Community Charter* and section 120 of the *Land Title Act*, Council may by bylaw close part of a highway to traffic and remove the dedication of that part of the highway;

AND WHEREAS Council, before adopting this Bylaw, has caused the required statutory public notice of its intention to be given by advertisement;

AND WHEREAS Council deems it expedient and in the public interest to stop up and close to traffic and remove the dedication of that portion of highway more particularly hereinafter described,

NOW THEREFORE the Council of the City of Burnaby ENACTS as follows:

1. This Bylaw may be cited as **BURNABY HIGHWAY CLOSURE BYLAW NO. 8, 2022.**
2. ALL AND SINGULAR those certain parcels or tracts of land, situate, lying and being in the City of Burnaby, in the Province of British Columbia, more particularly known and described as that portion of road dedicated by Plan 52114 in District Lot 98, Group 1, New Westminster District containing 63.3m² as shown outlined in bold on Reference Plan EPP125750 (hereinafter called “the closed portion of road”), prepared by William Papove, B.C.L.S., a copy of which is hereunto annexed, is hereby closed to all types of traffic.

3. The dedication of the closed portion of road as highway is removed.

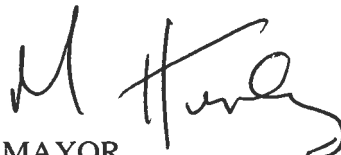
FIRST READING this 28th day of August, 2023

SECOND READING this 28th day of August, 2023

THIRD READING this 28th day of August, 2023

PUBLIC NOTICE DATES 7th day of September, 2023 and 14th day of September, 2023

ADOPTION this 25th day of September, 2023



MAYOR



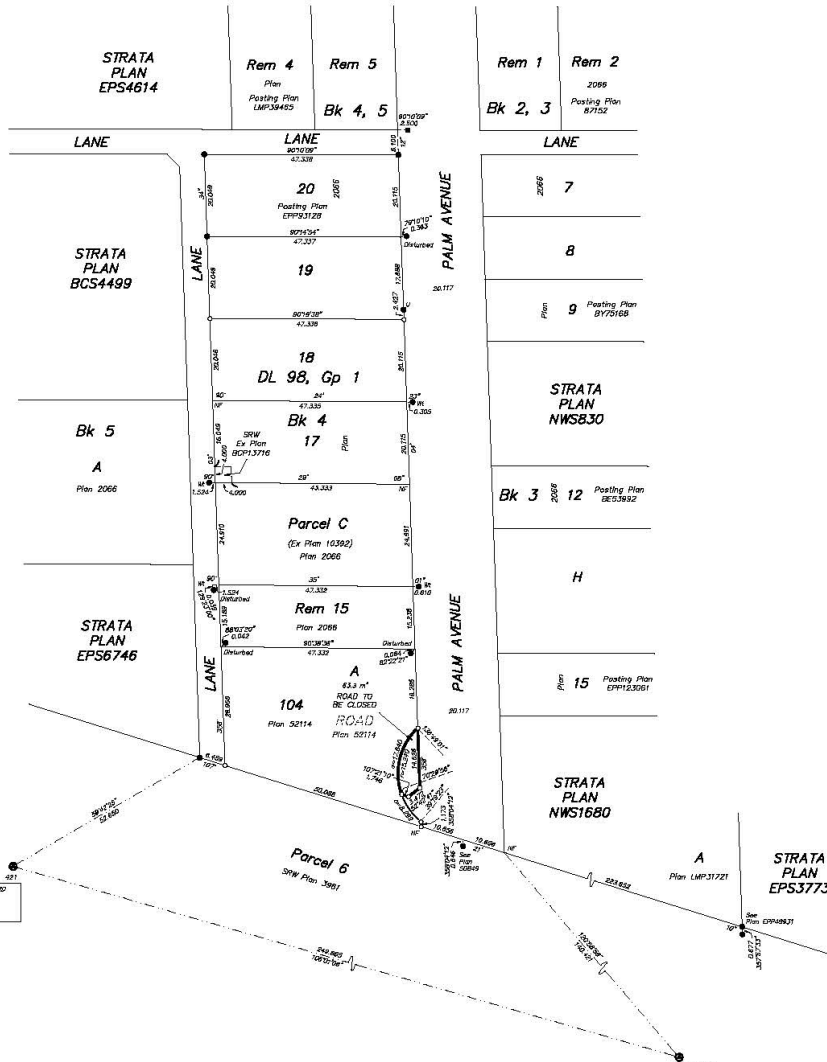
CORPORATE OFFICER

REFERENCE PLAN TO ACCOMPANY CITY OF BURNABY
HIGHWAY CLOSURE BYLAW NO. 14539
TO CLOSE A PORTION OF ROAD DEDICATED BY PLAN 52114,
DISTRICT LOT 98, GROUP 1,
NEW WESTMINSTER DISTRICT
PURSUANT TO SECTION 120 OF THE LAND TITLE ACT
AND SECTION 40 OF THE COMMUNITY CHARTER

Plan EPP125750

Schedule "A"

BCRS 820.026
10 0 50
All distances are in metres
THE INTENDED PLOT SIZE OF THIS PLAN
IS NEARER TO METRE BY MEASURE IN HEIGHT
(0 SIZE) WHEN PLOTTED AT A SCALE OF 1:2000



DATE: 08/08/2003 (CSRS) 4.0 G.D.M. 1.0 MARS
UTM ZONE 18
UTM EASTING: 648186.275
UTM NORTHING: 5048296.432
EARTH CURVATURE: 0.0000000000
APPROXIMATE ACCURACY: 0.00m

DATE: 08/08/2003 (CSRS) 4.0 G.D.M. 1.0 MARS
UTM ZONE 18
UTM EASTING: 648186.275
UTM NORTHING: 5048296.432
EARTH CURVATURE: 0.0000000000
APPROXIMATE ACCURACY: 0.00m

- LEGEND:**
- indicates control monument found
 - indicates abandoned iron pipe found
 - indicates abandoned iron pipe placed
 - indicates iron plug found
 - indicates iron plug placed
 - indicates marking found
 - indicates explanatory
 - indicates square mark
 - indicates unknown sign
 - indicates disk
 - indicates remainder
 - indicates witness
- This plan shows one or more witness points which are not set on the true corner(s).

THIS PLAN LIES WITHIN THE METRO
VANCOUVER REGIONAL DISTRICT

PROFESSIONAL LAND SURVEYING INC.
202 - 1150 WESTBROOK STREET
COQUITLAM, B.C. V3B 7Y9
TEL: (604) 484-3168
FAX: (604) 491-8568
FILE NUMBER: 76402

Integrated Survey Area No. 25, City of Burnaby, NAD83(CSRS) (4.0 G.D.M. 1.0 MARS)

Grid bearings are derived from observations between geodetic control monuments 421 and 8743317, and are referred to the central meridian of UTM zone 18 (133° West Longitude).

The UTM coordinates and mentioned absolute accuracy unless otherwise specified to compute grid coordinates, multiply ground-measured distances by the average scale factor of 0.9998627 which has been derived from geodetic control monument 421.

THE FIELD SURVEY REPRESENTED BY THIS PLAN WAS COMPLETED ON THE 13TH DAY OF JULY, 2003. WILLIAM PETERSON, B.C.S. 8024